

295 BUCK ROAD

Pleasant Valley Office Complex, Holland PA 18966

 FOR LEASE

 OFFICE

 1,740 SF



PROPERTY DESCRIPTION

Attractive office building located in Bucks County. Built in 1987 and renovated in 2007. Zoned C2 Commercial.

Notable tenants include Holland Eye Associates, Holland Family Dental, Holland Family Practice, Lily's Chocolate Paradise, Bamboo Kitchen and more.

AVAILABLE SUITE:

SUITE 115 - 1,740 SF - \$2,320 + Electric/Month

First Floor:

- Open bullpen area
- 2 small private offices, kitchenette & two restrooms

Second Floor:

- Open area
- Full kitchen/conference room with dishwasher & stove

LOCATION

- The shopping center offers a wide range of amenities including restaurants, cafes, healthcare facilities, nearby walking trails and a picturesque, serene outdoor view.
- Centrally located between Street Road, US Route 1 & Second Street Pike.
- North of the Buck Hotel in Feasterville and South of Village Shires Shopping Plaza in Northampton and the Newtown Bypass.
- Minutes from St. Mary Hospital, Aria Health, Bucks Community College & Neshaminy Mall, with the convenience of restaurants and shopping located within the Center.
- Two entrances - one on Buck Road and the other on Rockville Road.
- The Center has two sections - the properties available are in the Professional Building.

FOR MORE INFORMATION

Zena Charokopos

 215.396.2900 x103


 zena.charokopos@naimertz.com

David Russo

 215.359.7524

 david.russo@naimertz.com

NAI Mertz

 NAI Mertz | 210 E. Street Road, Suite 3B
Feasterville-Treose, PA 19053
215-396-2900 | naimertz.com

NAI MERTZ DISCLAIMER: NO WARRANTY OR REPRESENTATION, EXPRESS OR IMPLIED, IS MADE AS TO THE ACCURACY OF THE INFORMATION CONTAINED HEREIN, AND THE SAME IS SUBMITTED SUBJECT TO ERRORS, OMISSIONS, CHANGE OF PRICE, RENTAL OR OTHER CONDITIONS, PRIOR SALE, LEASE OR FINANCING, OR WITHDRAWAL WITHOUT NOTICE, AND OF ANY SPECIAL LISTING CONDITIONS IMPOSED BY OUR PRINCIPALS NO WARRANTIES OR REPRESENTATIONS ARE MADE AS TO THE CONDITION OF THE PROPERTY OR ANY HAZARDS CONTAINED THEREIN ARE ANY TO BE IMPLIED. OUTLINES ARE APPROXIMATE AND SHOWN ONLY TO IDENTIFY THE PARCEL IN CONSIDERATION.



295 BUCK ROAD

Pleasant Valley Office Complex, Holland, PA 18966

 FOR LEASE

 OFFICE

 1,740 SF



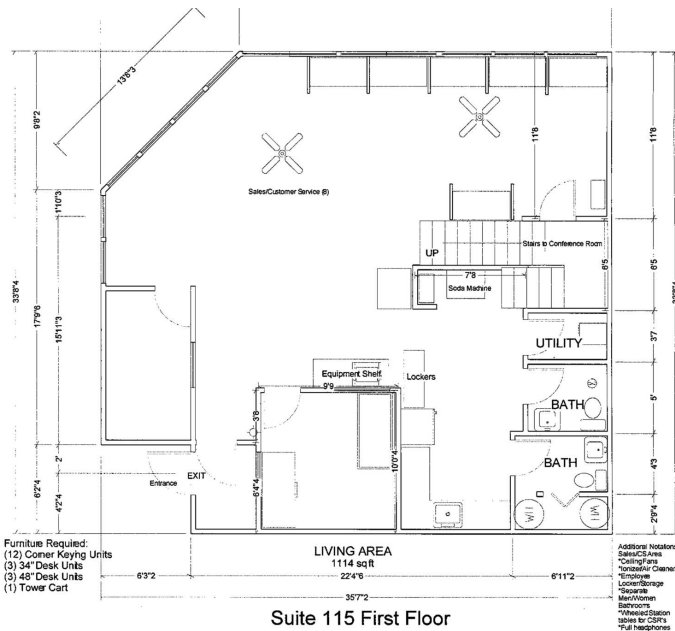
Suite entrance



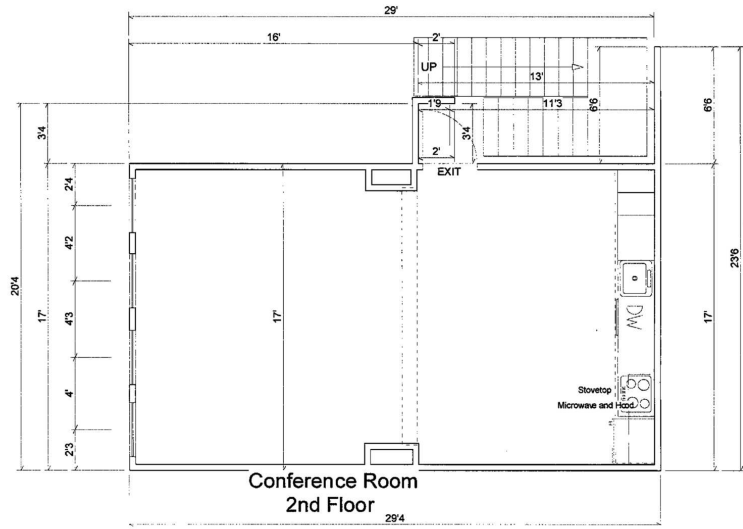
Open Area/Stairs to 2nd Floor



2nd Floor Kitchen





1st Floor Plan




2nd Floor Plan

FOR MORE INFORMATION

Zena Charokopos
 215.396.2900 x103
 zena.charokopos@naimertz.com

David Russo
 215.359.7524
 david.russo@naimertz.com

NAI Mertz

 NAI Mertz | 210 E. Street Road, Suite 3B
Feasterville-Trevose, PA 19053
215-396-2900 | naimertz.com



NAI MERTZ DISCLAIMER: NO WARRANTY OR REPRESENTATION, EXPRESS OR IMPLIED, IS MADE AS TO THE ACCURACY OF THE INFORMATION CONTAINED HEREIN, AND THE SAME IS SUBMITTED SUBJECT TO ERRORS, OMISSIONS, CHANGE OF PRICE, RENTAL OR OTHER CONDITIONS, PRIOR SALE, LEASE OR FINANCING, OR WITHDRAWAL WITHOUT NOTICE, AND OF ANY SPECIAL LISTING CONDITIONS IMPOSED BY OUR PRINCIPALS. NO WARRANTIES OR REPRESENTATIONS ARE MADE AS TO THE CONDITION OF THE PROPERTY OR ANY HAZARDS CONTAINED THEREIN ARE ANY TO BE IMPLIED. OUTLINES ARE APPROXIMATE AND SHOWN ONLY TO IDENTIFY THE PARCEL IN CONSIDERATION.

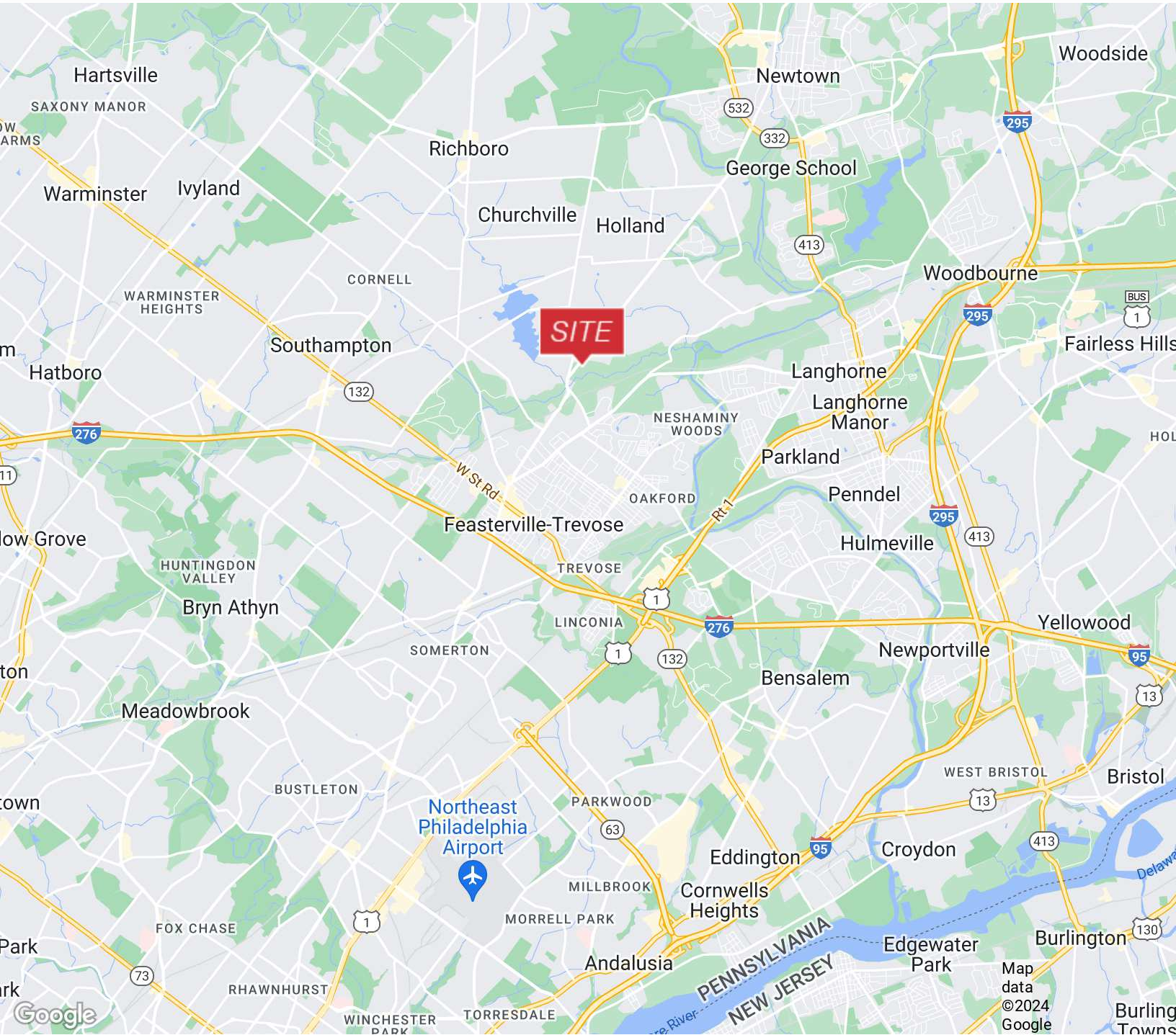
295 BUCK ROAD

Pleasant Valley Office Complex, Holland, PA 18966

 FOR LEASE

 OFFICE

 LOCATION MAP



FOR MORE INFORMATION

Zena Charokopos

 215.396.2900 x103

 zena.charokopos@naimertz.com

David Russo

 215.359.7524

 david.russo@naimertz.com

NAIMertz

 NAI Mertz | 210 E. Street Road, Suite 3B

Feasterville-Treose, PA 19053

215-396-2900 | naimertz.com

NAI MERTZ DISCLAIMER: NO WARRANTY OR REPRESENTATION, EXPRESS OR IMPLIED, IS MADE AS TO THE ACCURACY OF THE INFORMATION CONTAINED HEREIN, AND THE SAME IS SUBMITTED SUBJECT TO ERRORS, OMISSIONS, CHANGE OF PRICE, RENTAL OR OTHER CONDITIONS, PRIOR SALE, LEASE OR FINANCING, OR WITHDRAWAL WITHOUT NOTICE, AND OF ANY SPECIAL LISTING CONDITIONS IMPOSED BY OUR PRINCIPALS. NO WARRANTIES OR REPRESENTATIONS ARE MADE AS TO THE CONDITION OF THE PROPERTY OR ANY HAZARDS CONTAINED THEREIN ARE ANY TO BE IMPLIED. OUTLINES ARE APPROXIMATE AND SHOWN ONLY TO IDENTIFY THE PARCEL IN CONSIDERATION.

