

SANIBEL ISLAND LEASE SPACE Office/Retail/Medical Uses

1530 Periwinkle Way
Sanibel, Florida 33957

Boback
Commercial
Group
Commercial Sales & Leasing



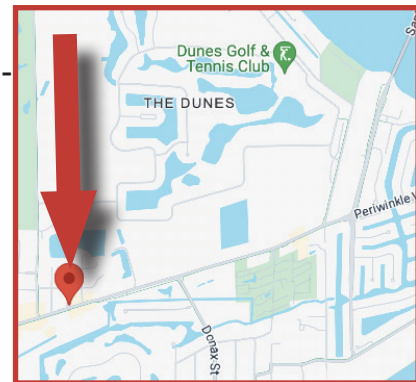
FOR LEASE: \$30 PSF + \$6.60 CAM

ABOUT THE PROPERTY

High visibility location on Periwinkle Way. Liberal GC zoning allows a multitude of retail/office/medical uses. 2nd floor space with an elevator.

PROPERTY FEATURES

- ▣ 1,125 +/- Sqft
- ▣ High visibility location on Periwinkle Way
- ▣ Zoning: Liberal GC commercial zoning - Sanibel FL
- ▣ Strap#: 19-46-23-T4-00903.0040\
- ▣ 2nd floor space with elevator.
- ▣ Heavy seasonal and local traffic area
- ▣ Utilities: Water & Sewer



JIM BOBACK, CCIM
Broker

239-565-2616
JB@BobackCommercialGroup.com
www.BobackCommercialGroup.com

This document has been prepared by Boback Commercial Group for advertising and general information only. Boback Commercial Group makes no guarantees, representations or warranties of any kind, expressed or implied, regarding the information including, but not limited to, warranties of content, accuracy and reliability. Any interested party should undertake their own inquiries as to the accuracy of the information.

SANIBEL ISLAND LEASE SPACE

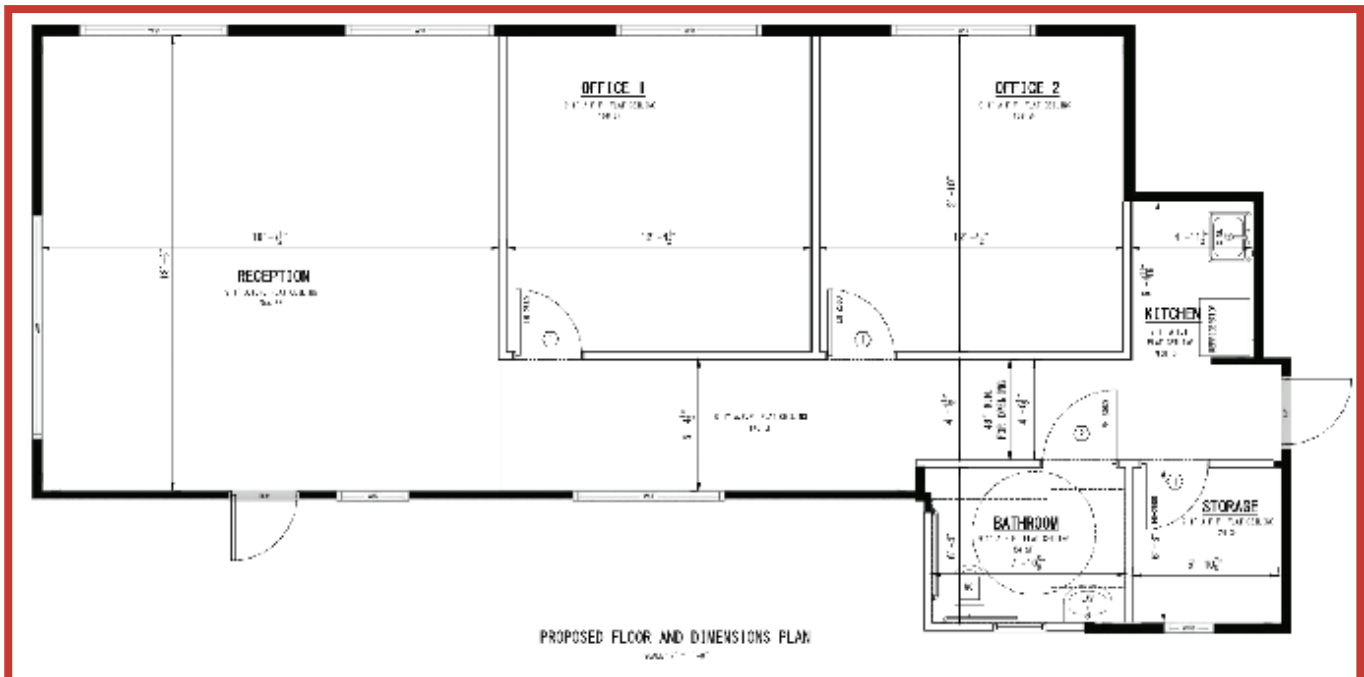
Office/Retail/Medical Uses

1530 Periwinkle Way
Sanibel, Florida 33957

Boback
Commercial
Group
Commercial Sales & Leasing



FLOOR PLAN



TRAFFIC COUNT (ADDT)

Periwinkle Way

22,000

JIM BOBACK, CCIM
Broker

239-565-2616
JB@BobackCommercialGroup.com
www.BobackCommercialGroup.com

This document has been prepared by Boback Commercial Group for advertising and general information only. Boback Commercial Group makes no guarantees, representations or warranties of any kind, expressed or implied, regarding the information including, but not limited to, warranties of content, accuracy and reliability. Any interested party should undertake their own inquiries as to the accuracy of the information.