



# 329 REMINGTON BLVD

BOLINGBROOK



## MEDICAL OFFICE LEASE OPPORTUNITY AVAILABLE

### Property Highlights

Directly connected to care, Remington Medical Commons offers 9,401 SF of premier medical office space, located adjacent to AdventHealth, a key facility within the UChicago Medicine Health System.



**MEDICAL OFFICE  
SUITES AVAILABLE**



**4.83/1,000  
PARKING RATIO**



**3 MINUTES FROM  
FULL I-55 INTERCHANGE**



**SIGNAGE  
OPPORTUNITY**



**ON-SITE  
FITNESS CENTER**



**HIGH VISIBILITY  
ALONG REMINGTON RD**

**KAROLINE EIGEL**

+1 312 470 2302

Karoline.Eigel@cushwake.com

**JOSH CRANE**

+1 312 424 8151

Josh.Crane@cushwake.com

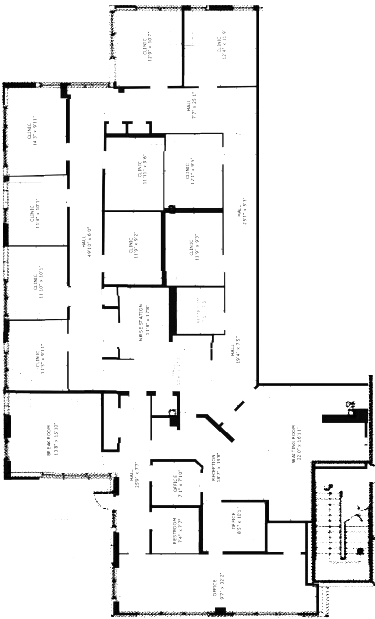
[healthpeakportfolioil.com](http://healthpeakportfolioil.com)



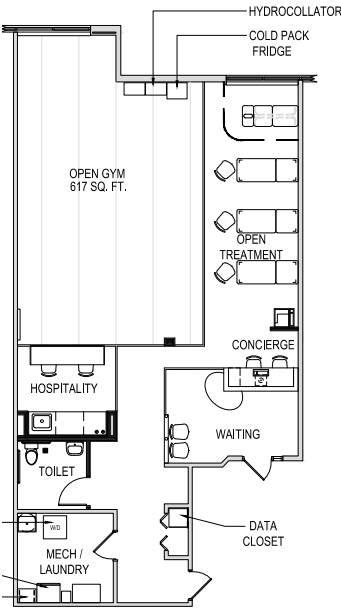
**Healthpeak®** | **DOC  
LISTED  
NYSE**

# Available Space

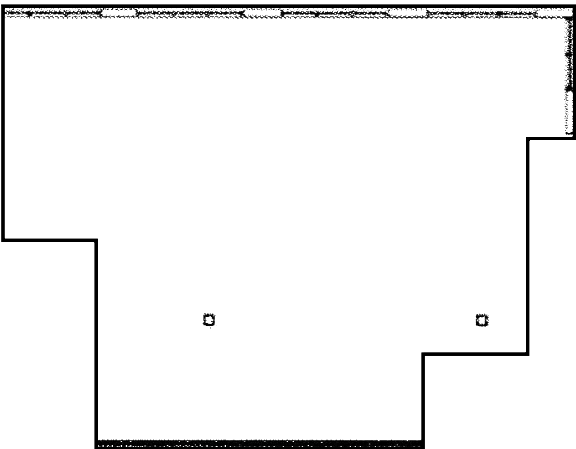
SUITE 100 | 4,588 RSF



SUITE 105 | 1,824 RSF



SUITE 240 | 2,989 RSF



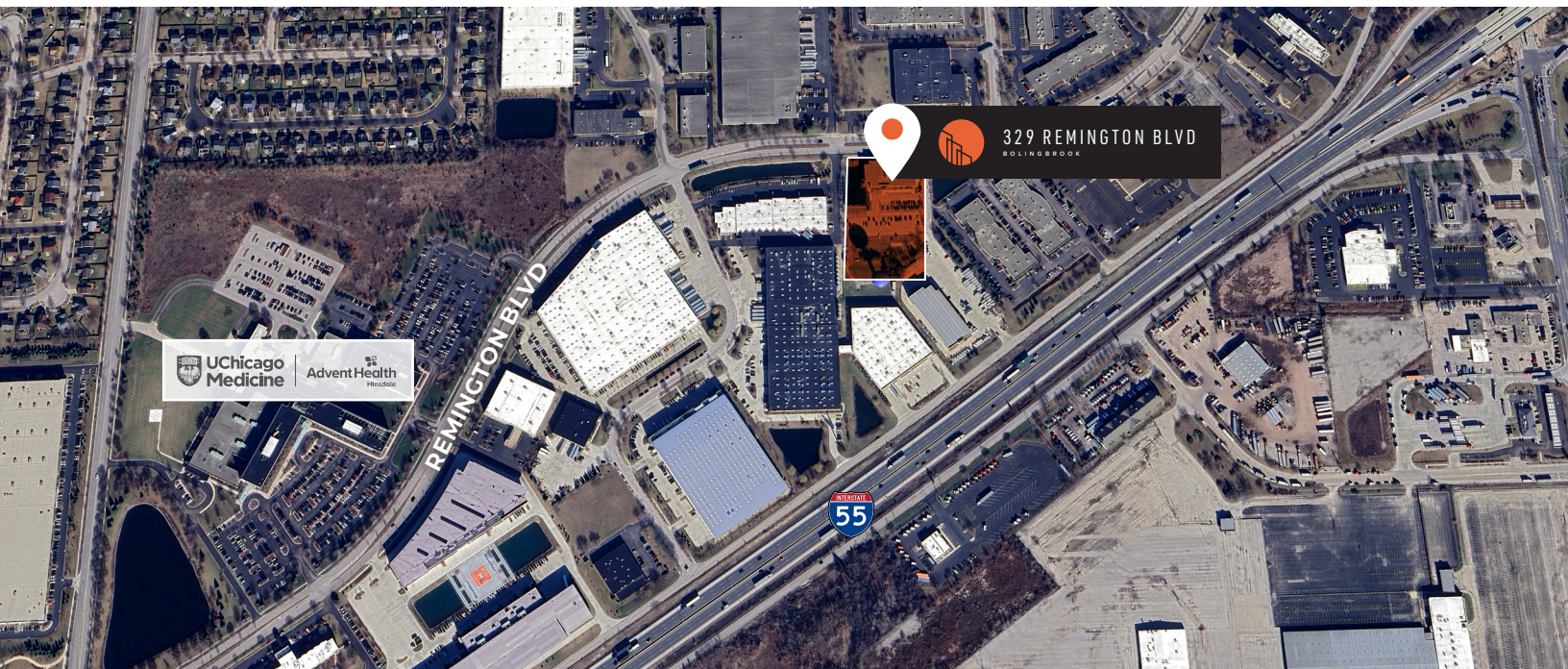






# Proximity With Purpose

With 9,401 SF of medical office space located immediately adjacent to AdventHealth and 3 minutes from the I-55 interchange, Remington Medical Commons delivers the ideal address for healthcare providers connected to the UChicago Medicine Health System.



**KAROLINE EIGEL**

+1 312 470 2302

Karoline.Eigel@cushwake.com

**JOSH CRANE**

+1 312 424 8151

Josh.Crane@cushwake.com

[healthpeakportfolioil.com](http://healthpeakportfolioil.com)



**Healthpeak®** | **DOC**  
LISTED  
NYSE

©2025 Cushman & Wakefield. All rights reserved. The information contained in this communication is strictly confidential. This information has been obtained from sources believed to be reliable but has not been verified. NO WARRANTY OR REPRESENTATION, EXPRESS OR IMPLIED, IS MADE AS TO THE CONDITION OF THE PROPERTY (OR PROPERTIES) REFERENCED HEREIN OR AS TO THE ACCURACY OR COMPLETENESS OF THE INFORMATION CONTAINED HEREIN, AND SAME IS SUBMITTED SUBJECT TO ERRORS, OMISSIONS, CHANGE OF PRICE, RENTAL OR OTHER CONDITIONS, WITHDRAWAL WITHOUT NOTICE, AND TO ANY SPECIAL LISTING CONDITIONS IMPOSED BY THE PROPERTY OWNER(S). ANY PROJECTIONS, OPINIONS OR ESTIMATES ARE SUBJECT TO UNCERTAINTY AND DO NOT SIGNIFY CURRENT OR FUTURE PROPERTY PERFORMANCE.