

# AXIS 360

COMMERCIAL REAL ESTATE

3001½ Gill St.  
Suite A  
Bloomington, Illinois

[www.axis360.co](http://www.axis360.co)



## SPECIALTY FARM—Ellsworth, Illinois

### ADDRESS

29738 E. 1400 North Road  
Ellsworth, Illinois

### BUILDING SIZE

24,500 sq. ft.

### LOT SIZE

6.5 acres

### PARCEL #

16-36-400-006

### ASKING PRICE

~~\$599,000~~ **\$549,000**

### ZONING

Agriculture

Specialty farm with two outbuildings and a two-story, unique barn with unlimited possibilities.



**Mike Talkington**  
Commercial Broker  
[mtalkington@axis360.co](mailto:mtalkington@axis360.co)  
(309) 530-4913

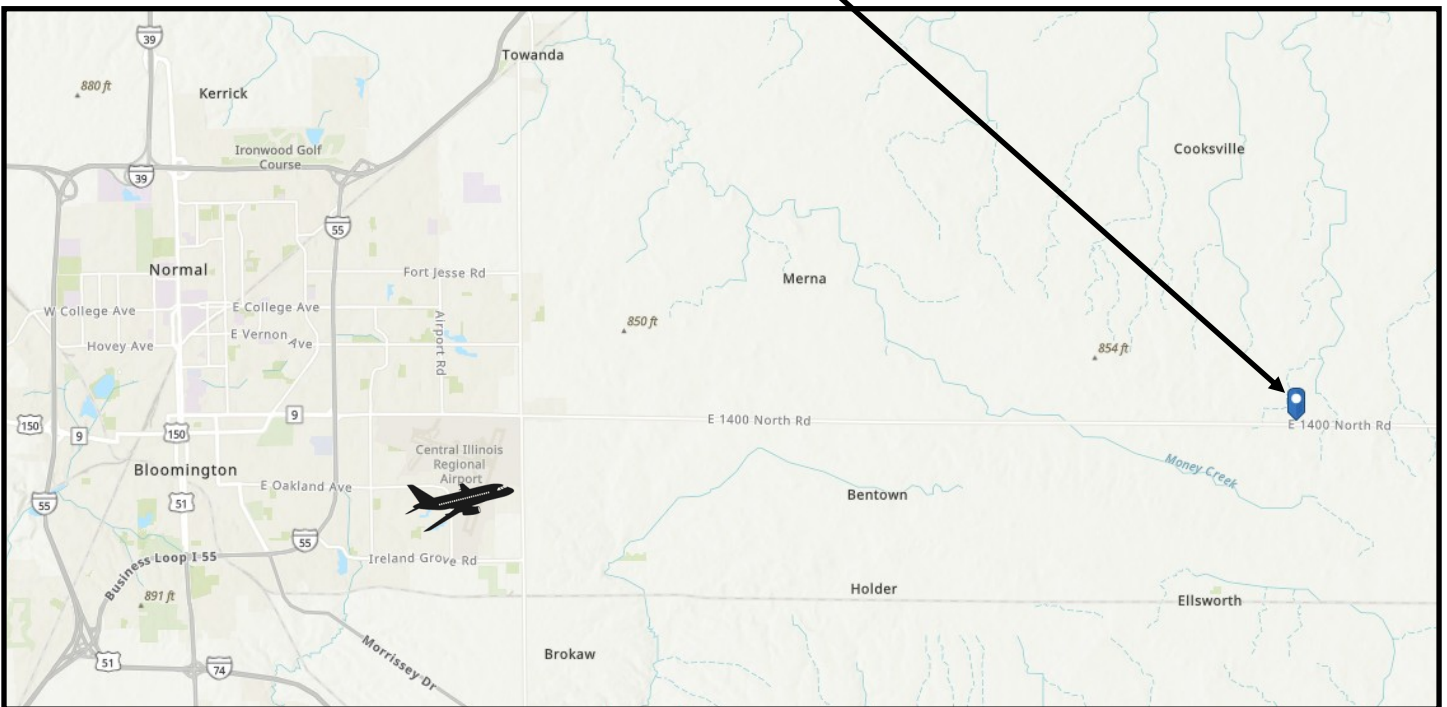
Visit our Website:  
[www.axis360.co](http://www.axis360.co)





Located just 11 miles east of Central Illinois Regional Airport on Route 9.

\* Houses have been demised.





3001½ Gill St.  
Suite A  
Bloomington, Illinois  
[www.axis360.co](http://www.axis360.co)

Visit our Website:



### Original, Two-Story Barn



**Mike Talkington, Commercial Broker**

[mtalkington@axis360.co](mailto:mtalkington@axis360.co)

**(309) 530-4913**



3001½ Gill St.  
Suite A  
Bloomington, Illinois  
[www.axis360.co](http://www.axis360.co)

Visit our Website:



**Morton Building  
finished as retail/  
office/warehouse**



**Mike Talkington, Commercial Broker**

[mtalkington@axis360.co](mailto:mtalkington@axis360.co)

**(309) 530-4913**



Shed with three overhead doors and extra storage/work areas

