

FOR LEASE

686 GRAND AVENUE RIDGEFIELD, NJ



33,500+/- SQ. FT. WAREHOUSE

CONTACT EXCLUSIVE BROKER

Eric Lewin

Mobile (201) 832 - 4569

elewin@teamresourcesinc.com

Joseph Manganaro

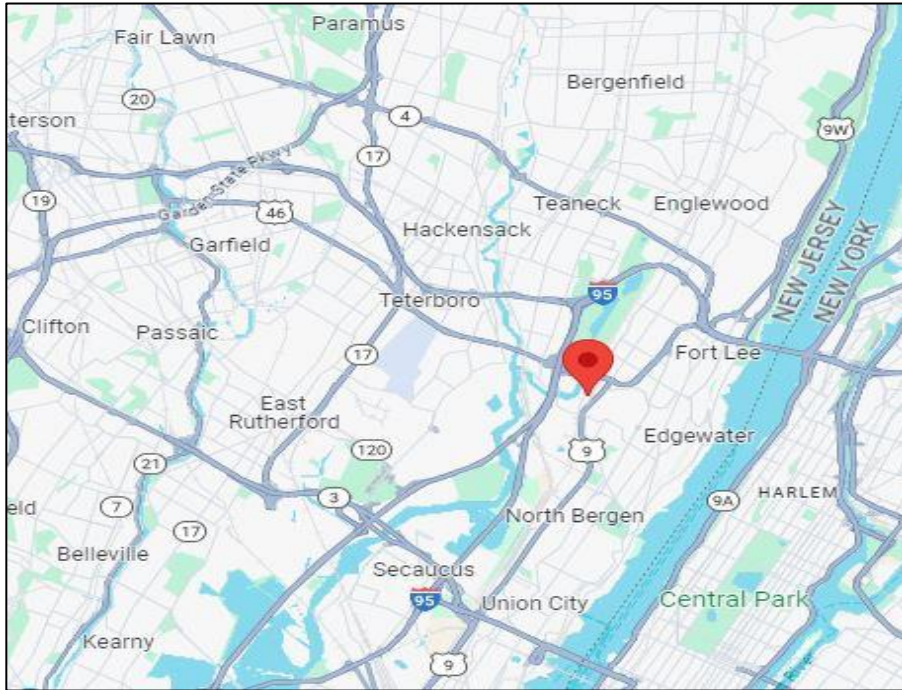
Mobile (201) 637 - 6765

jmanganaro@teamresourcesinc.com



686 GRAND AVENUE // RIDGEFIELD, NJ

Team Resources, as exclusive agent, is pleased to present this property of 33,500 +/- Sq. Ft. for Lease. Zoned Industrial Space.



PROXIMITY TO KEY LOCATIONS

Port Newark 19.3 +/- miles NJ Turnpike 5.1 +/- miles
 Lincoln Tunnel 7.3 +/- miles GW Bridge 4.2 +/- miles
 Holland Tunnel 9.2 +/- miles

CONTACT EXCLUSIVE BROKER

Eric Lewin

Mobile (201) 832-4569

elewin@teamresourcesinc.com

Joseph Manganaro

Mobile (201) 637-6765

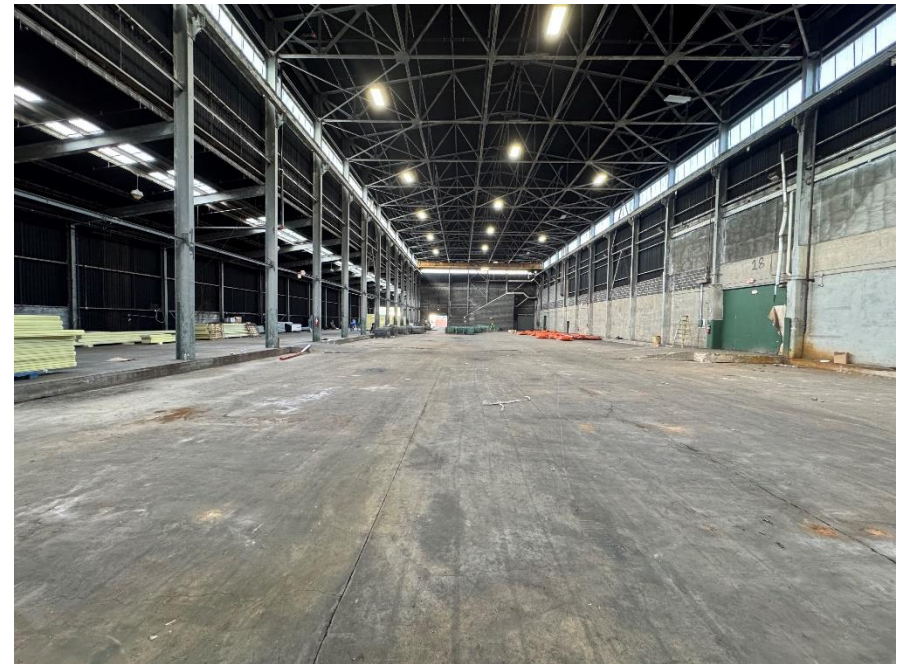
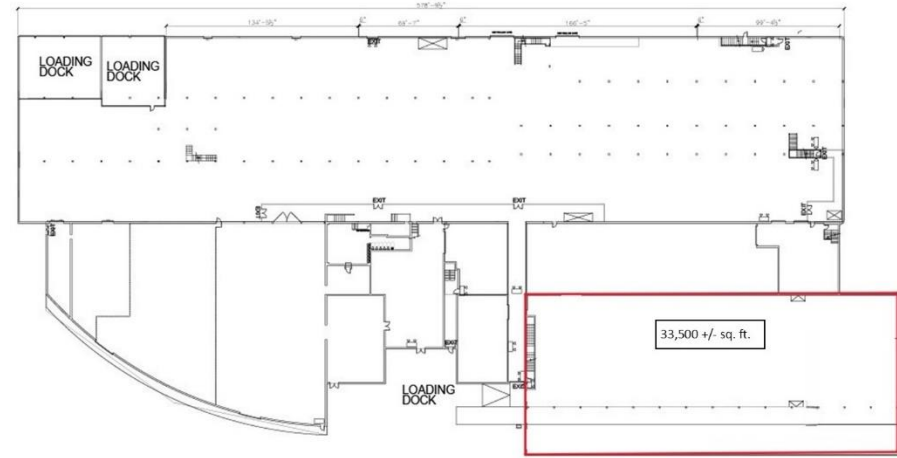
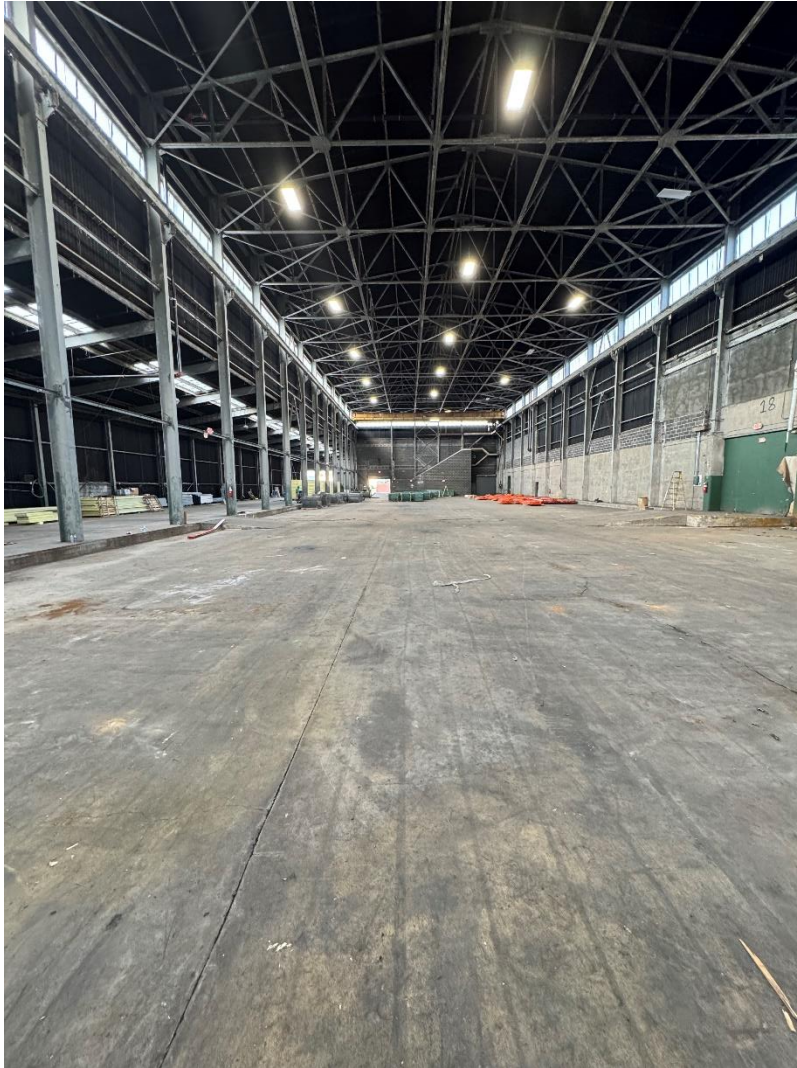
jmanganaro@teamresourcesinc.com



Property Description

Available Space:	33,500 +/- sq. ft.
Building:	236,000 +/- sq. ft.
Office Space:	To suit
Ceiling Height:	44' clear
Loading Doors:	3 tailboard doors
Zoning:	Industrial
Sprinklers:	dry
Power:	ample
Lease Price:	\$16.50 per sq. ft. Net
Taxes/CAM:	\$1.75 +/- psf / \$1.75 +/- psf
Occupancy:	Immediate
Notes:	300' x 77' clear span. Crane in building.

686 GRAND AVENUE // RIDGEFIELD, NJ



CONTACT EXCLUSIVE BROKER

Eric Lewin

Mobile (201) 832-4569

elewin@teamresourcesinc.com

Joseph Manganaro

Mobile (201) 637-6765

jmanganaro@teamresourcesinc.com

