

ROSEDON PLAZA  
**LANSDOWNE, PA**  
63 NORTH UNION AVENUE  
±2,094 - 8,145 SF AVAILABLE  
PHILADELPHIA MSA

JOIN  
**DOLLAR GENERAL**

CONVENIENTLY LOCATED JUST OFF BALTIMORE PIKE



MetroCommercial.com | PLYMOUTH MEETING, PA | MOUNT LAUREL, NJ

get in touch.

**PAT GALLAGHER**

office 610.825.5222  
direct 610.260.2676  
pgallagher@metrocommercial.com

**SAMUEL THIERS**

office 610.825.5222  
direct 610.260.2665  
sthiers@metrocommercial.com

# 83,565 TOTAL HOUSEHOLDS WITHIN A 10 MINUTE DRIVE TIME



	5 MINUTES	10 MINUTES	15 MINUTES
TOTAL POPULATION	35,764	221,686	482,895
TOTAL HOUSEHOLDS	13,259	83,565	186,375
MED HH INCOME	\$47,732	\$46,858	\$50,660
% HH > \$100k	19%	18%	23%

The information and images contained herein are from sources deemed reliable. However, Metro Commercial Real Estate, Inc. makes no representation whatsoever as to their accuracy or authenticity. Images shown may be modified for illustrative purposes. Images may be out-of-date and not current. 10.27.22

ROSEDON PLAZA  
**LANSDOWNE, PA**  
 63 NORTH UNION AVENUE



[www.metrocommercial.com](http://www.metrocommercial.com)

# EXTREMELY DENSE MARKET (156,948 PEOPLE WITHIN 2 MILES)



The information and images contained herein are from sources deemed reliable. However, Metro Commercial Real Estate, Inc. makes no representation whatsoever as to their accuracy or authenticity. Images shown may be modified for illustrative purposes. Images may be out-of-date and not current. 10.27.22

ROSEDON PLAZA  
**LANSDOWNE, PA**  
63 NORTH UNION AVENUE



www.metrocommercial.com

# PERFECT FOR MEDICAL, OFFICE & RETAIL



The information and images contained herein are from sources deemed reliable. However, Metro Commercial Real Estate, Inc. makes no representation whatsoever as to their accuracy or authenticity. Images shown may be modified for illustrative purposes. Images may be out-of-date and not current. 10.27.22

ROSEDON PLAZA  
**LANSDOWNE, PA**  
63 NORTH UNION AVENUE



[www.metrocommercial.com](http://www.metrocommercial.com)

# VISIBILITY & ACCESS TO UNION AVENUE



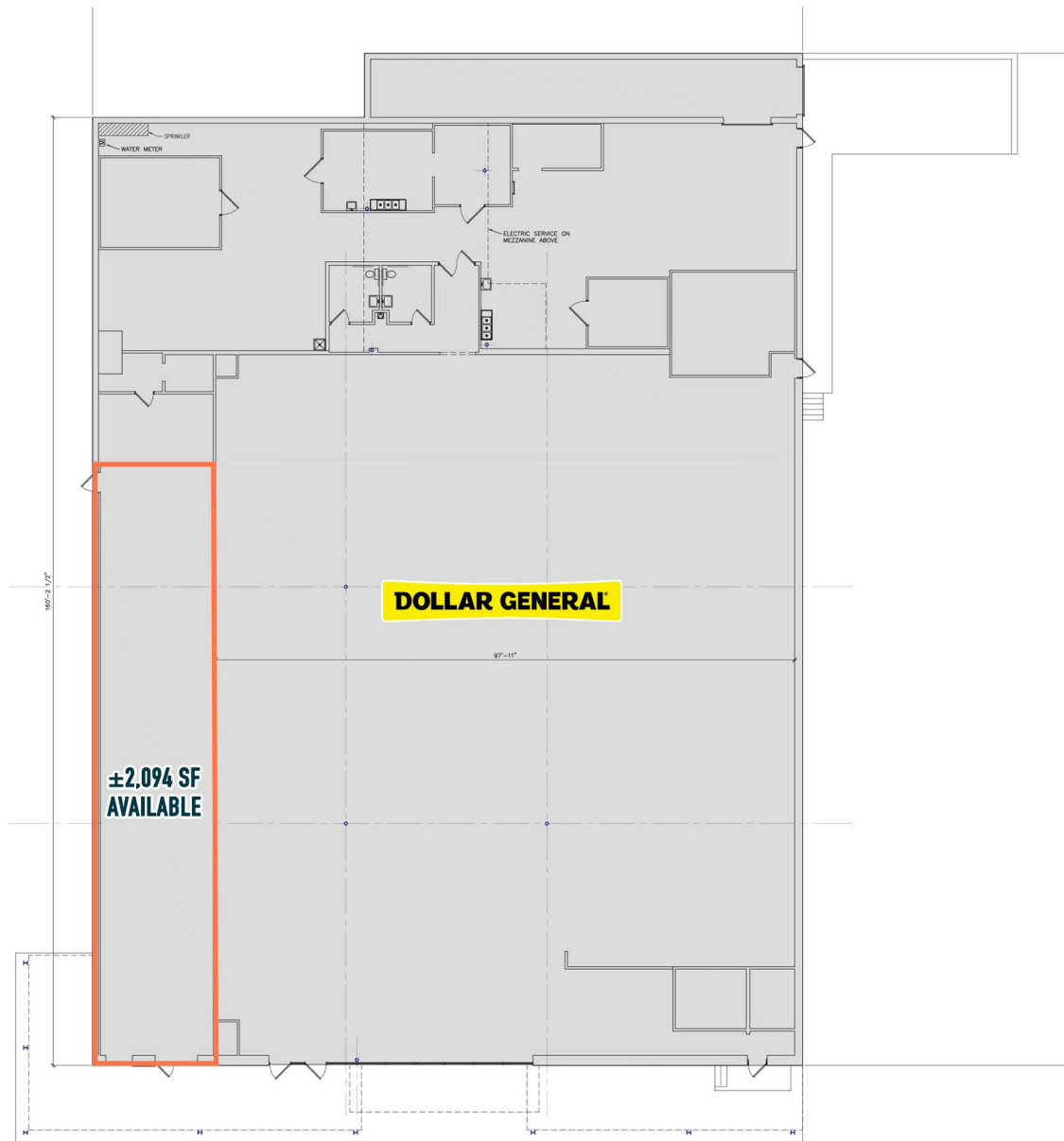
The information and images contained herein are from sources deemed reliable. However, Metro Commercial Real Estate, Inc. makes no representation whatsoever as to their accuracy or authenticity. Images shown may be modified for illustrative purposes. Images may be out-of-date and not current. 10.27.22

ROSEDON PLAZA  
**LANSDOWNE, PA**  
63 NORTH UNION AVENUE



[www.metrocommercial.com](http://www.metrocommercial.com)

AVAILABLE ENDCAP!



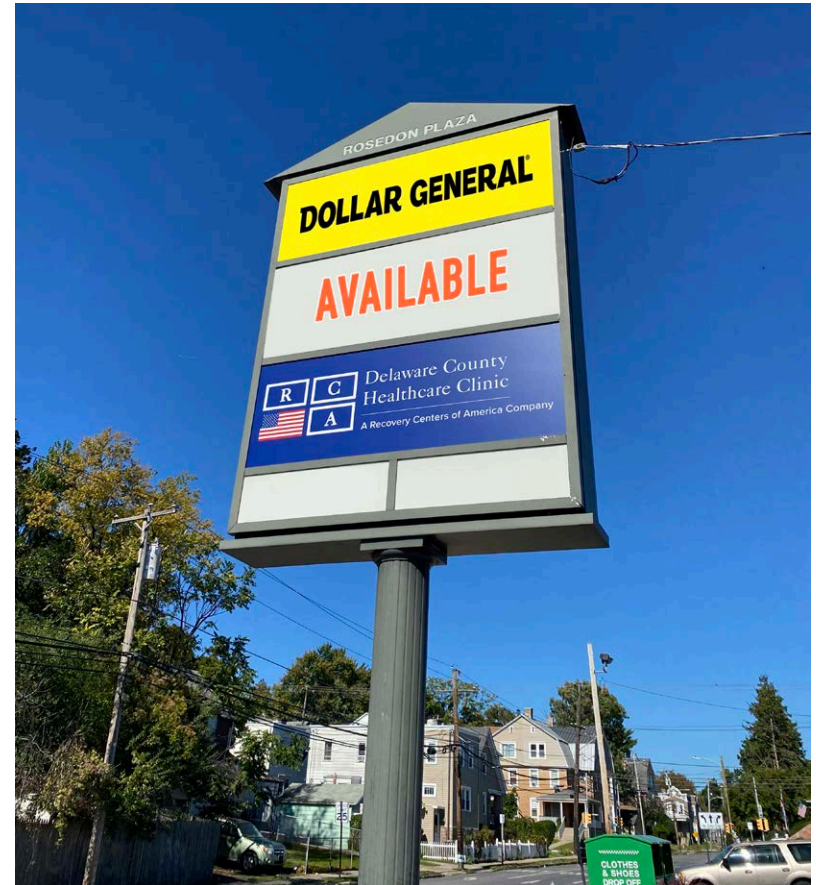
The information and images contained herein are from sources deemed reliable. However, Metro Commercial Real Estate, Inc. makes no representation whatsoever as to their accuracy or authenticity. Images shown may be modified for illustrative purposes. Images may be out-of-date and not current. 10.27.22

ROSEDON PLAZA  
LANSDOWNE, PA  
63 NORTH UNION AVENUE



[www.metrocommercial.com](http://www.metrocommercial.com)

# PROPERTY PHOTOS



The information and images contained herein are from sources deemed reliable. However, Metro Commercial Real Estate, Inc. makes no representation whatsoever as to their accuracy or authenticity. Images shown may be modified for illustrative purposes. Images may be out-of-date and not current. 10.27.22

ROSEDON PLAZA  
**LANSDOWNE, PA**  
63 NORTH UNION AVENUE



[www.metrocommercial.com](http://www.metrocommercial.com)