

Office | For Sublease

CBRE

LAKE FALLS VILLAGE

6080 Falls Road, 2nd Floor, Baltimore, MD 21209

3,823 RSF Available Now on the 2nd Floor



Office | For Sublease

Lake Falls Village

A 3-story, 42,086 sf mixed-use center with retail, restaurants, service, and office tenants on Falls Road, just north of the Baltimore City line.

The center is located in the Mount Washington/Roland Park trade area, and is positioned minutes from Charles Street, Roland Avenue, I-695 and I-83. Lake Falls Village features open and ample surface parking.

Highlights

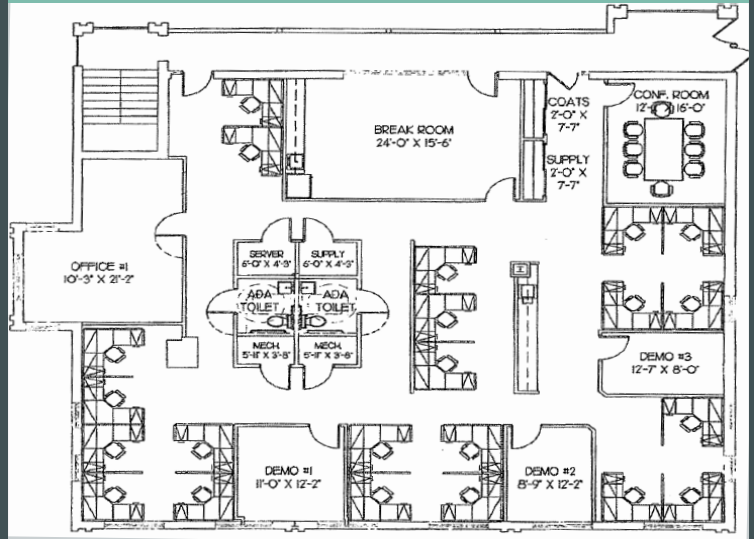
- + Built in 1981 | Renovated in 2020
- + Class A Office Space
- + All Furniture and Cubicles Included
- + Parking: 40 Surface Spaces
- + **Amenities within 1 Mile**
 - **Restaurants:** Starbucks, Sushi Hana, Al Pacino Pizza, The Corner Pantry, Tropicool Italian Ice, Pepe's Pizza, Bonjour, Whole Foods Market, Royal Farms, and more!
 - **Parks:** Lake Roland Park, Asbury Park
 - **Retail:** Lake Falls Village, Loyal Companion, Joe's Bike Shop, Princeton Sports, and more!
 - **Services:** Mt Washington Dry Cleaners, Aluma Yoga, Coppermine Racquet & Fitness Club - Bare Hills, USPS, FedEx Drop Box, and more!
- + **Convenient Location**
 - Easy Proximity to I-695 and I-83

Contact Us

Adam Ceribelli
+1 410 244 3175
adam.ceribelli@cbre.com

David Fields
+1 410 244 3130
david.fields@cbre.com

3,823 RSF Available Now on the 2nd Floor



© 2021 CBRE, Inc. All rights reserved. This information has been obtained from sources believed reliable, but has not been verified for accuracy or completeness. You should conduct a careful, independent investigation of the property and verify all information. Any reliance on this information is solely at your own risk. CBRE and the CBRE logo are service marks of CBRE, Inc. All other marks displayed on this document are the property of their respective owners, and the use of such logos does not imply any affiliation with or endorsement of CBRE. Photos herein are the property of their respective owners. Use of these images without the express written consent of the owner is prohibited.