

FOR SUBLEASE

4950 Genesee Street Cheektowaga, New York, 14225



5,455 ± SF Office/Flex Space Available

Building Features

Total Building Size	62,715 ± Sq. Ft.
Space Available	5,455 ± Sq. Ft.

Property Highlights.

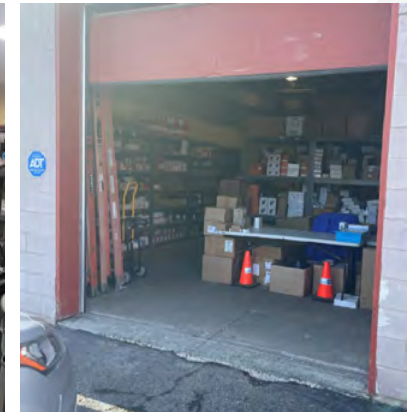
- Space available for sublease in Airport Commerce Park
- Four (4) private perimeter offices
- Open area for cubicles
- Large training room
- Warehouse space with two (2) overhead doors
- Ample free parking
- One mile east of Buffalo Niagara International Airport
- Close proximity to NYS I-90 and Route 33, making it easily accessible to all of Western New York
- Ideal for: office/flex space, sales and services, general office users

Demographic	1 Mile	3 Miles	5 Miles
Population	3,477	58,330	178,922
Average H.H. Income	\$85,915	\$95,247	\$102,896

Contact

DAVID P. SEIDER
Real Estate Salesperson
+1 716 570 9086
dseider@pyramidbrokerage.com

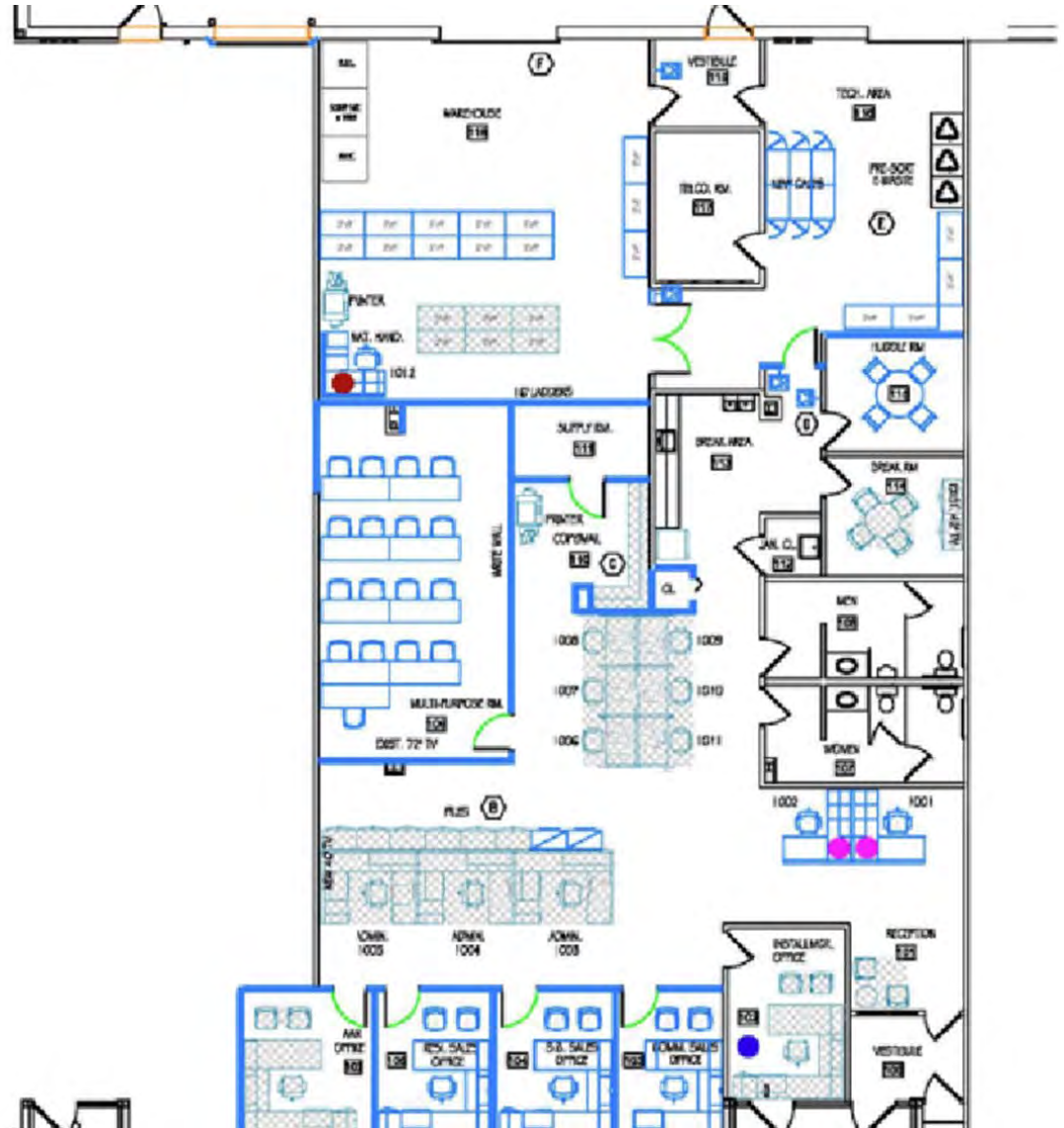
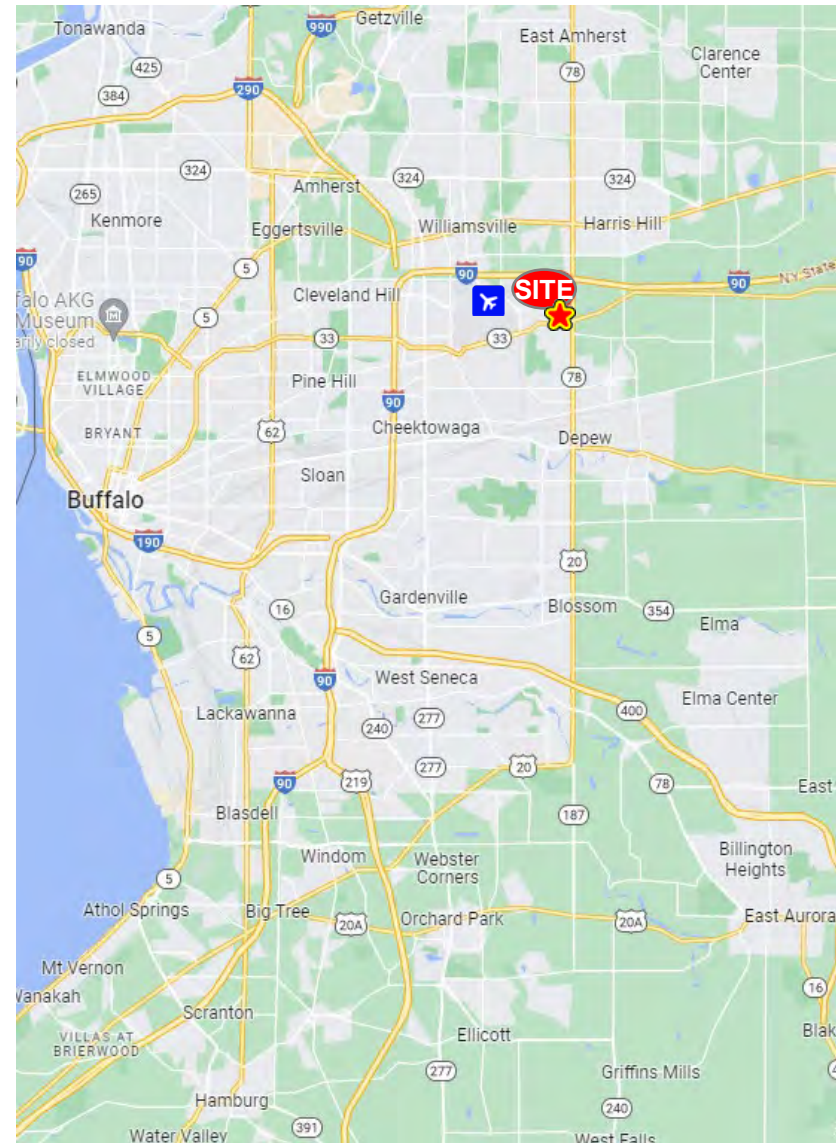
SUBLEASE OPPORTUNITY



14 Lafayette Square, Suite 1900
Buffalo, New York 14203
+1 716 852 7500
pyramidbrokerage.com

FOR SUBLEASE

4950 Genesee Street, Cheektowaga, NY



Location Map

Floor Plan

FOR SUBLEASE

4950 Genesee Street, Cheektowaga, NY



Aerial