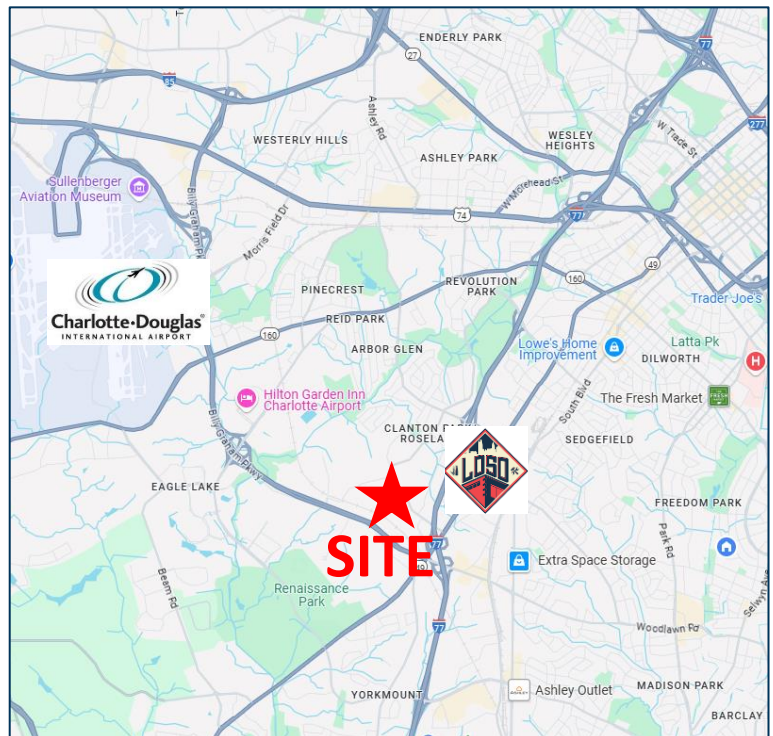


Industrial Condo For Sale– 4901 Dwight Evans Road Charlotte, NC



Property Highlights

- **Industrial condominium for sale located near LoSo and CLT airport, 1.5 miles to I-77, 0.3 mile to Billy Graham Parkway. The office space was recently renovated.**
- **Address:** 4901 Dwight Evans Rd., Unit 134
- **Unit Size:** 4,532 SF
- **Asking Price:** \$945,000
- **Office SF:** 2,508 SF
- **Loading:** One (1) Dock High Door (8' X 10")
- **Clear Height:** 18'
- **Zoning:** ML-2



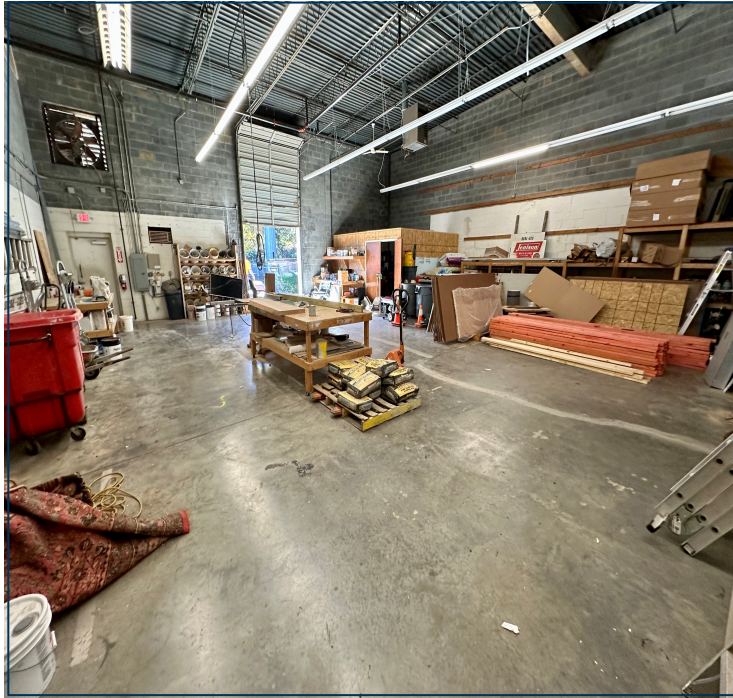
Chris Neal
704.287.7120
chris@selwynpropertygroup.com

Industrial Condo For Sale– 4901 Dwight Evans Road Charlotte, NC



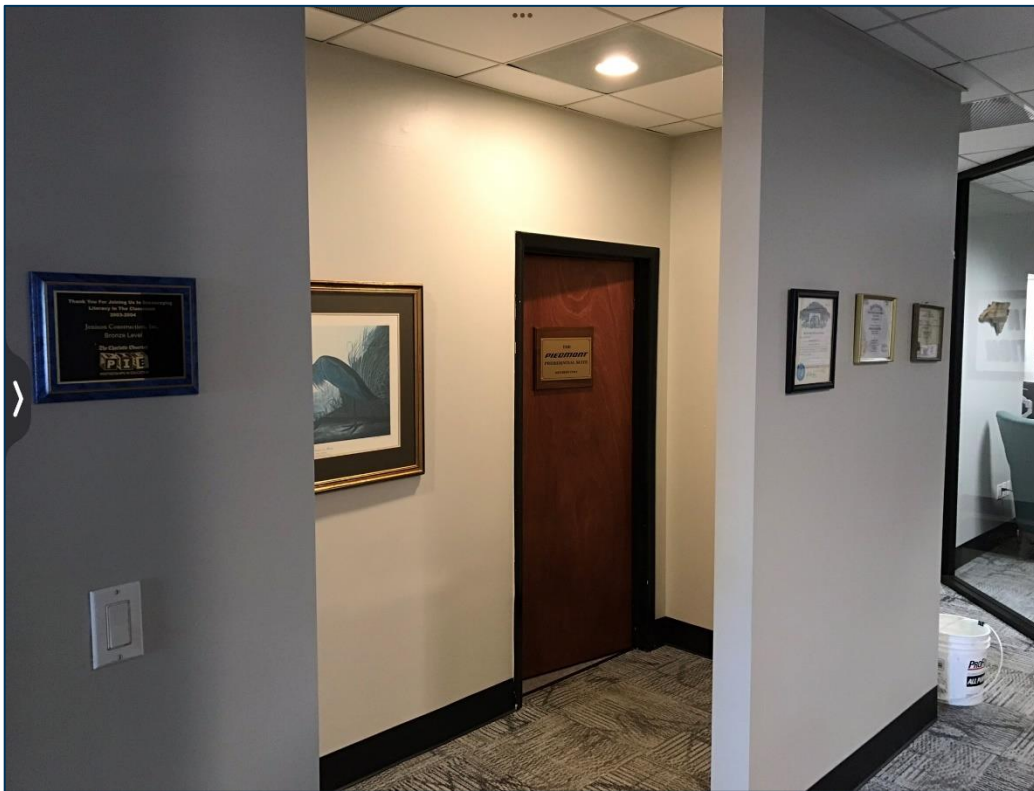
Chris Neal
704.287.7120
chris@selwynpropertygroup.com

Industrial Condo For Sale– 4901 Dwight Evans Road Charlotte, NC



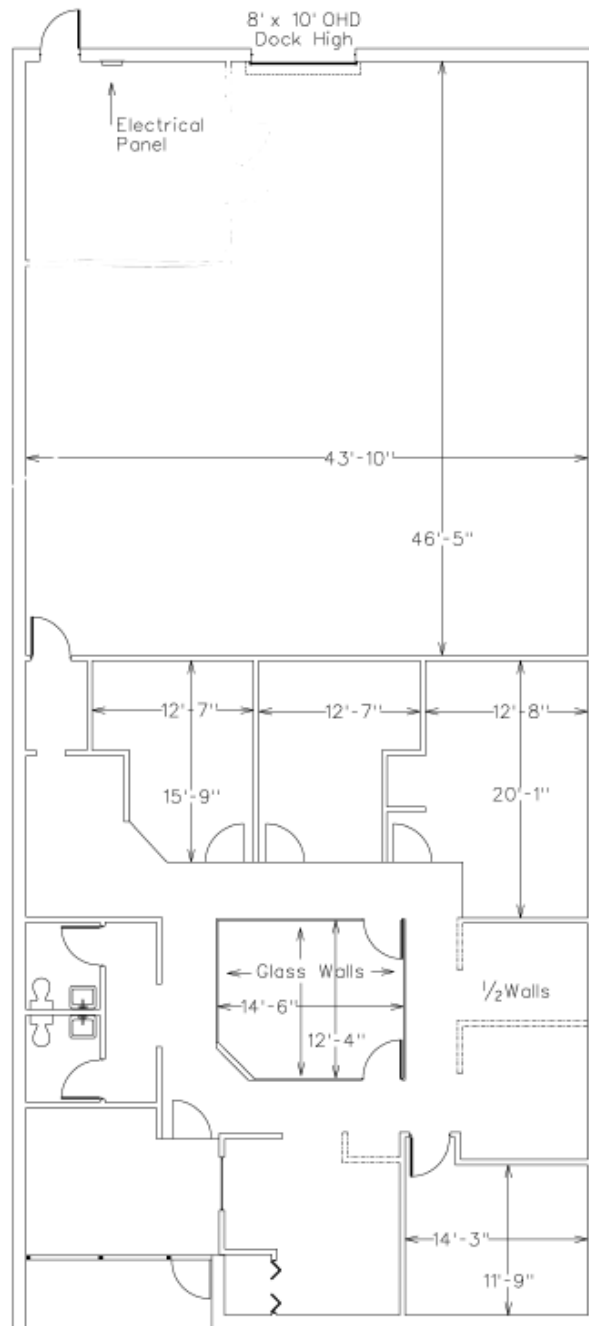
Chris Neal
704.287.7120
chris@selwynpropertygroup.com

Industrial Condo For Sale– 4901 Dwight Evans Road Charlotte, NC



Chris Neal
704.287.7120
chris@selwynpropertygroup.com

Industrial Condo For Sale– 4901 Dwight Evans Road Charlotte, NC

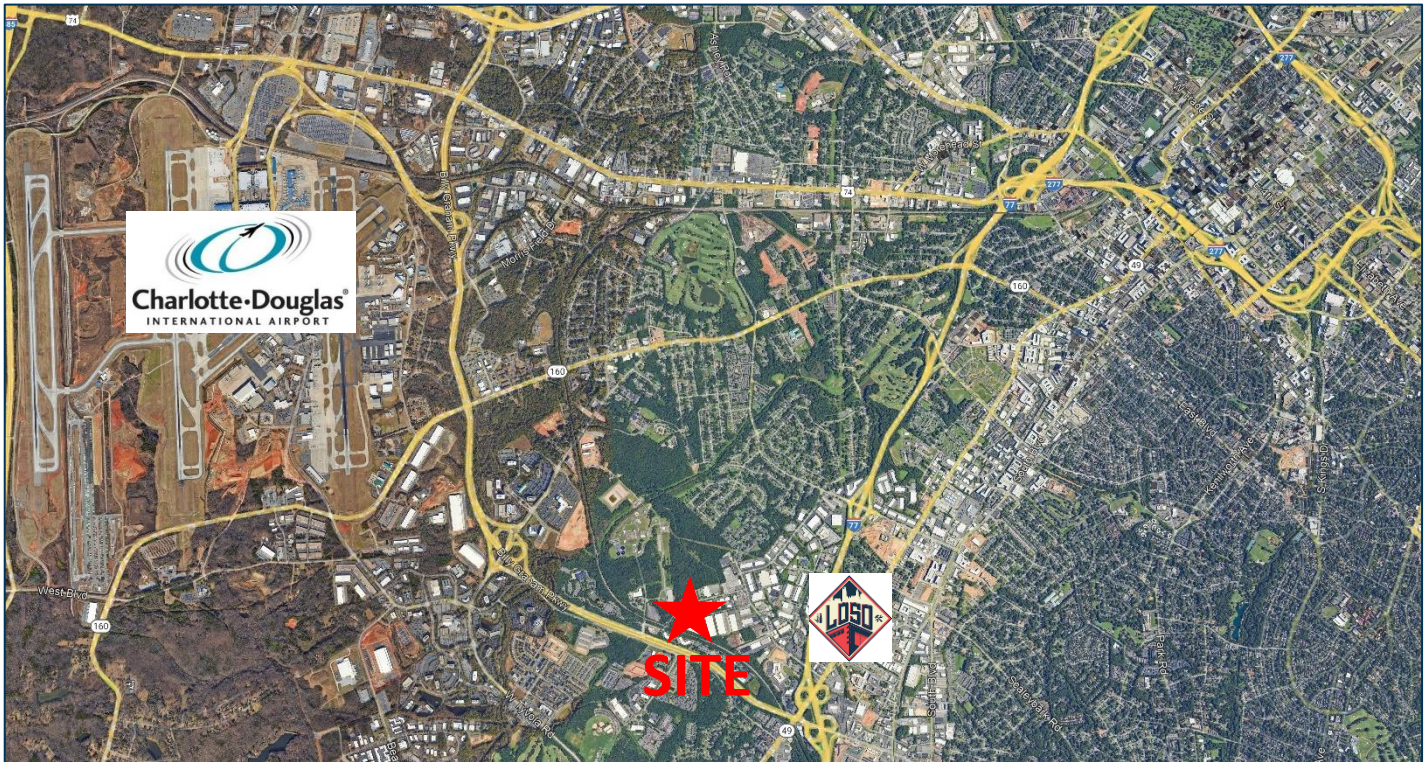


4901 Dwight Evans
Suite 134
4,532 Total SF
Using Exterior Wall



Chris Neal
704.287.7120
chris@selwynpropertygroup.com

Industrial Condo For Sale– 4901 Dwight Evans Road Charlotte, NC



Chris Neal
704.287.7120
chris@selwynpropertygroup.com