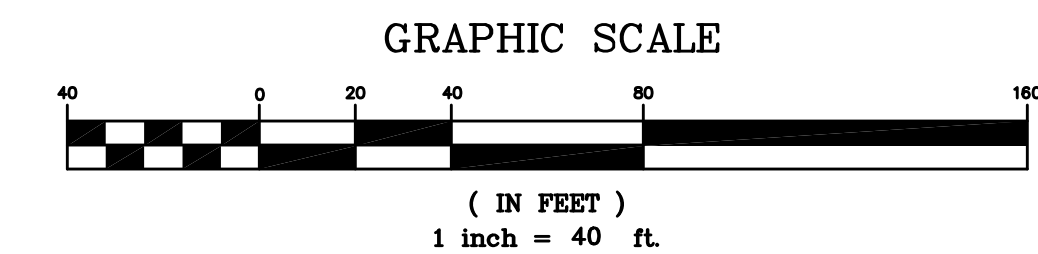
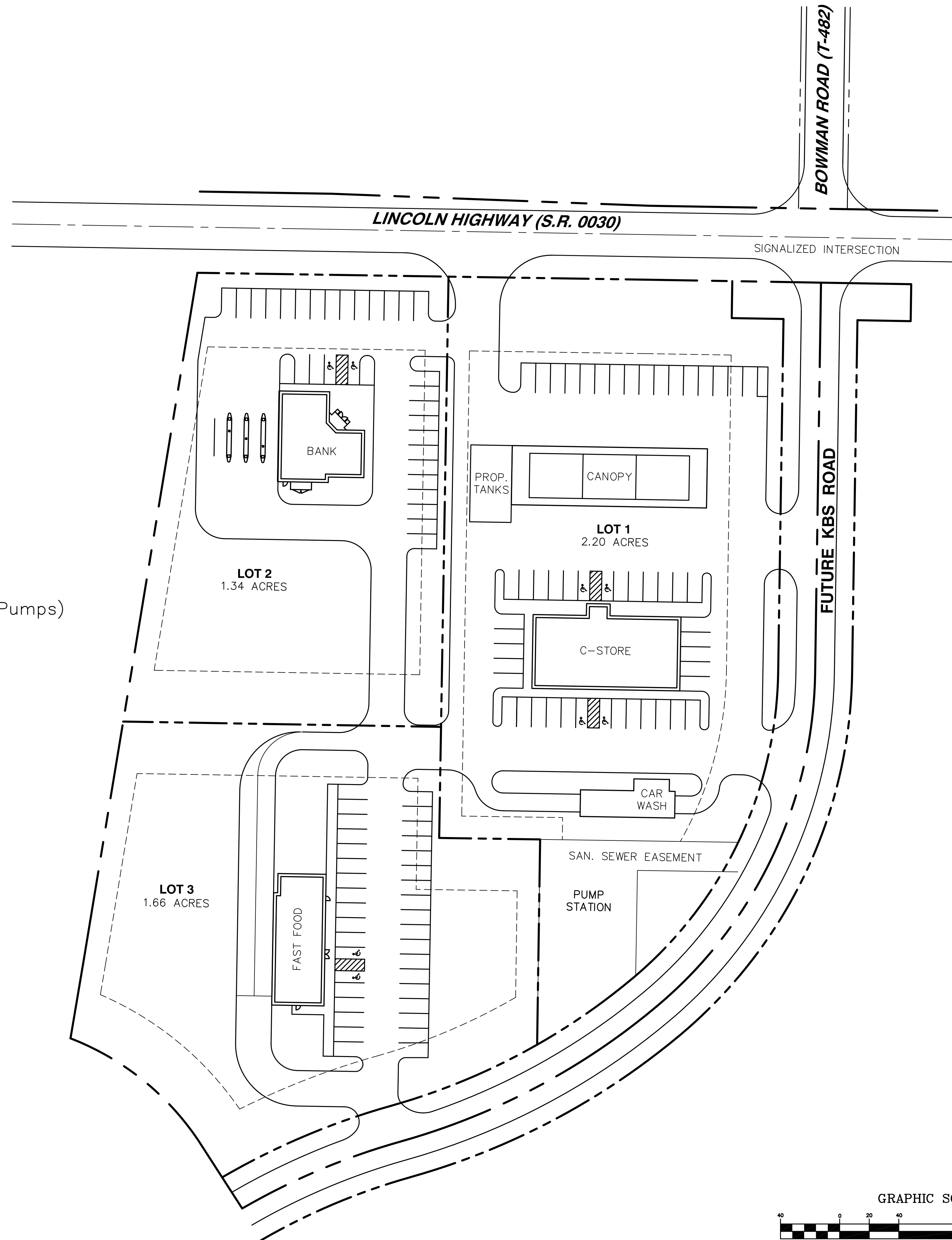


## NOTES & SITE DATA

1. Minimum Lot Area: 8,000 Sq. Ft.
2. Minimum Lot Width: 70 Ft. (@ Right-of-way line)  
125 Ft. (Convenience Store)
3. Setbacks: Front – 35 Ft. (50' along Lincoln Highway)  
Side – 15 Ft.  
Rear – 35 Ft.
4. Maximum Impervious Coverage: 75 Percent  
Proposed Impervious Coverage:  
Lot 1 – 74.8 Percent (71,543 Sq. Ft.)  
Lot 2 – 51.7 Percent (30,284 Sq. Ft.)  
Lot 3 – 36.8 Percent (26,642 Sq. Ft.)
5. Parking Spaces Required:  
Convenience Store: 1 Per 75 Sq. Ft. = 68 Required  
68 Spaces Provided (Includes 16 @ Gas Pumps)  
Fast Food: 1 Per 2 Seats and 2 employees = 36 Required  
36 Spaces Provided  
Bank: 1 Per 100 Sq. Ft. = 30 Required  
30 Spaces Provided



NO.	DATE	DESCRIPTION

Gordon L. Brown & Associates, Inc.  
Civil Engineers & Surveyors  
2238 South Queen Street  
York, PA 17402-4631  
**GLB&A** (717) 741-4621

CONCEPT PLAN  
Jackson Township  
York County, Pennsylvania

DRAWN BY	S.J.S.
CHECKED BY	
SCALE	1" = 40'
DATE	12/01/10
DWG. NO.	
FILE NO.	30.09.11632
SHEET	1 OF 1

P:\00\_2010\0011632 - Bureau Development\Copy\Bureau\Bldg\Bldg\_Plan.dwg, Concept Plan, 12/20/10, 12:28:24 PM