

AN OFFICE LEASE OPPORTUNITY

# 2401 TEE CIRCLE, SUITE 203

NORMAN, OK 73069



**JUDY J. HATFIELD, CCIM**

Equity Commercial Realty Advisors, LLC  
Founding Principal  
(405) 640-6167 office  
(405) 640-6167 cell  
jjhatfield@equityrealty.net

# 2401 TEE CIRCLE, SUITE 203

NORMAN, OK 73069



## OFFERING SUMMARY

Available (Suite 203):	1,200 SF
Lease Rate:	\$1,000/month
Year Built/Renovated:	1983 / 2002
Building Size:	18,000 SF
Renovated:	2002
Zoning:	C-O (Suburban Office Commercial)

## PROPERTY HIGHLIGHTS

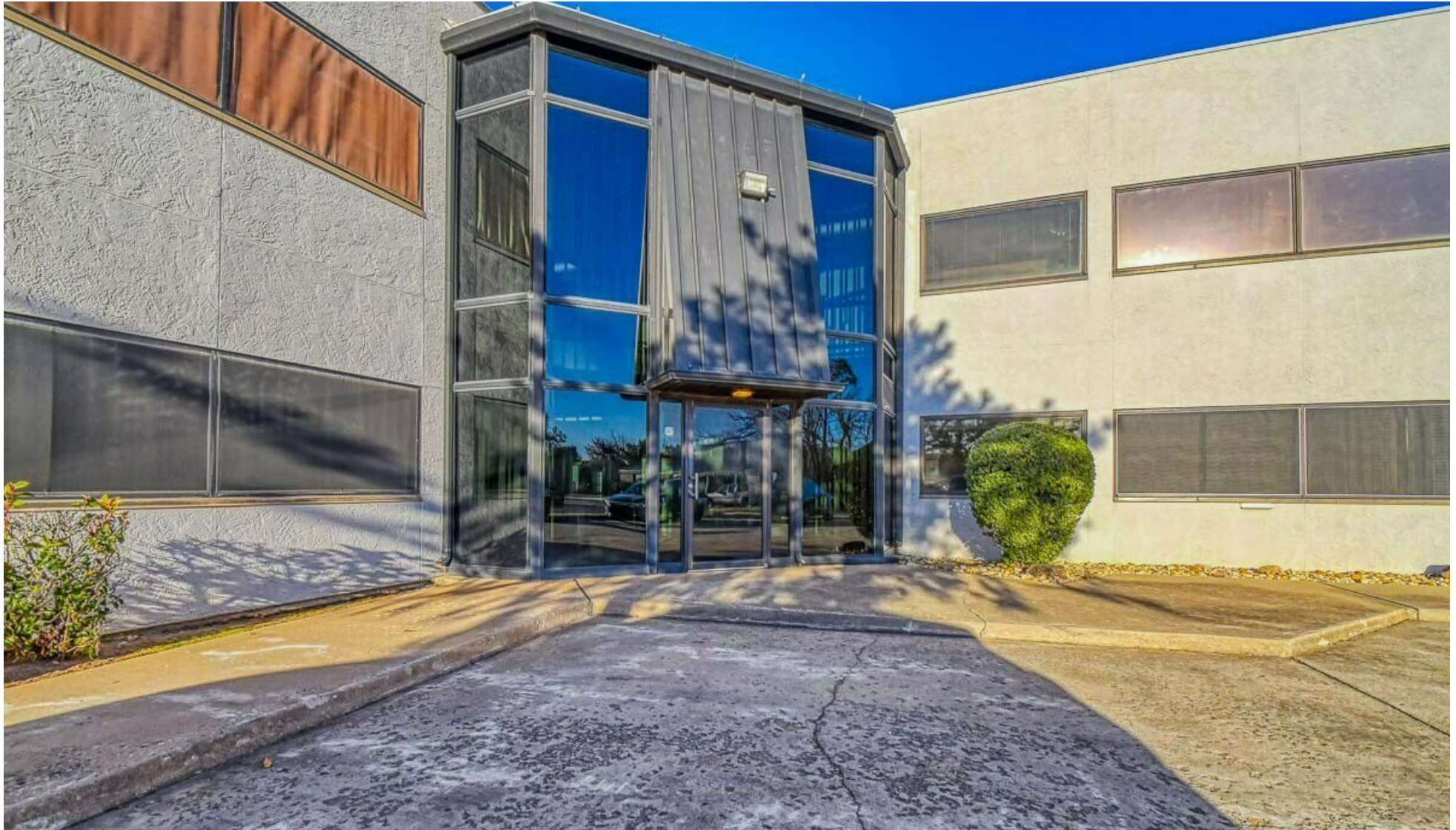
- Located East of 24th Ave NW, South of W Robinson Street, North of W Main Street
- Easy access to I-35 from Robinson Street and Main Street
- Suite 203 includes 2 large offices, 1 small office, a kitchen area, a private restroom, and views of Westwood Golf Course
- No furnishings are included except the refrigerator and microwave
- Tenant responsible for all utilities and janitorial

## JUDY J. HATFIELD, CCIM

Founding Principal  
Equity Commercial Realty Advisors, LLC (405) 640-6167 cell  
jjhatfield@equityrealty.net (405) 640-6167 office

# 2401 TEE CIRCLE, SUITE 203

NORMAN, OK 73069



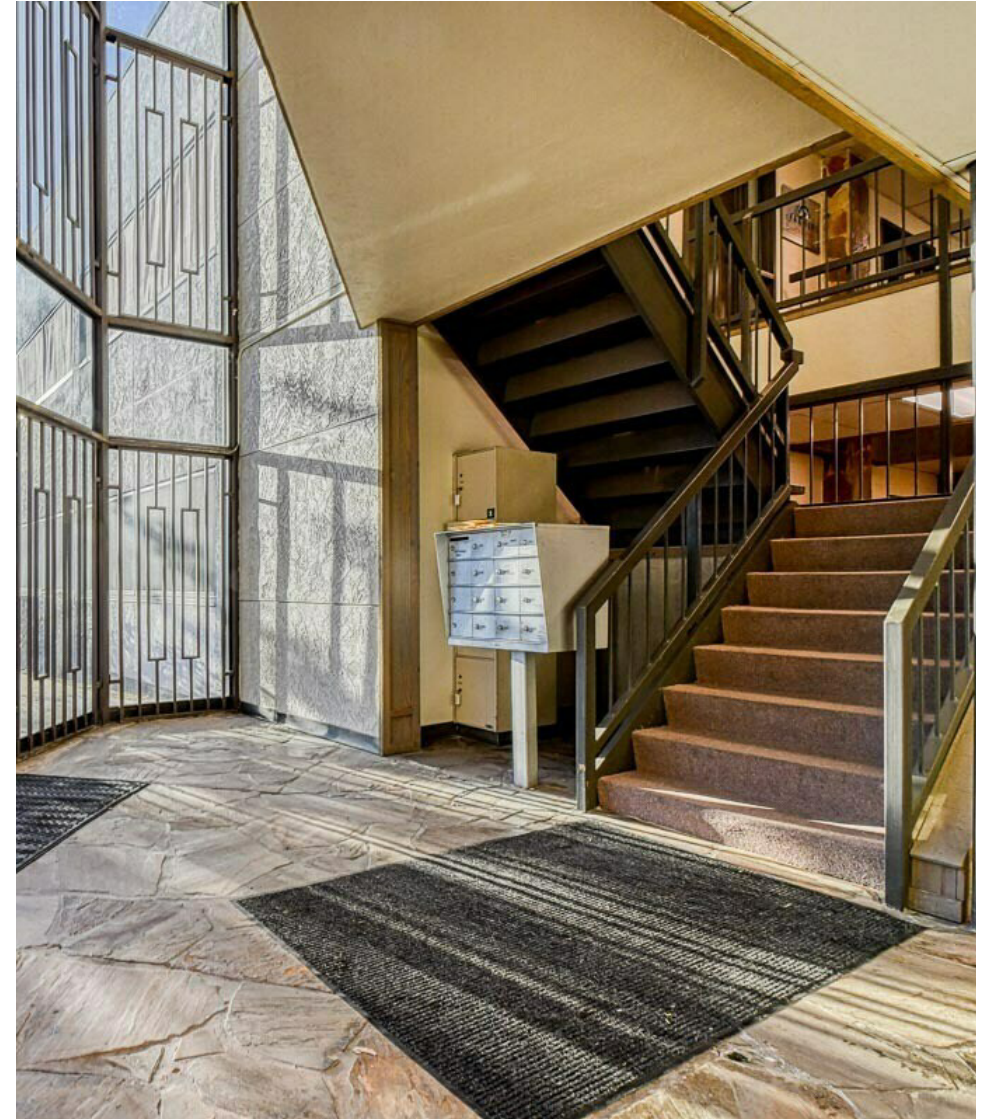
**JUDY J. HATFIELD, CCIM**

Founding Principal

Equity Commercial Realty Advisors, LLC (405) 640-6167 cell  
jjhatfield@equityrealty.net (405) 640-6167 office

# 2401 TEE CIRCLE, SUITE 203

NORMAN, OK 73069



**JUDY J. HATFIELD, CCIM**

Founding Principal

Equity Commercial Realty Advisors, LLC (405) 640-6167 cell  
jjhatfield@equityrealty.net (405) 640-6167 office



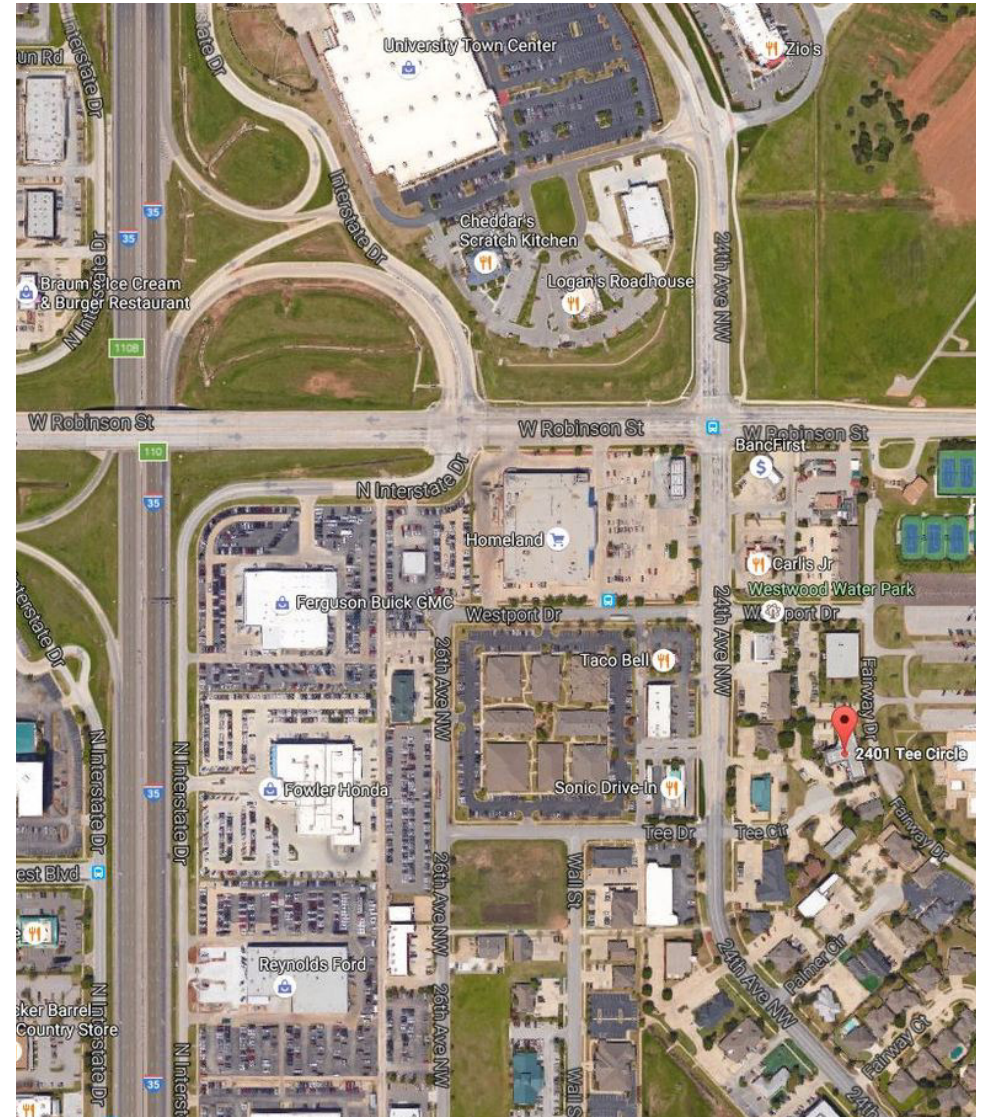
**JUDY J. HATFIELD, CCIM**

Founding Principal

Equity Commercial Realty Advisors, LLC (405) 640-6167 cell  
jjhatfield@equityrealty.net (405) 640-6167 office

# 2401 TEE CIRCLE, SUITE 203

NORMAN, OK 73069



**JUDY J. HATFIELD, CCIM**

Founding Principal

Equity Commercial Realty Advisors, LLC (405) 640-6167 cell  
jjhatfield@equityrealty.net (405) 640-6167 office