

METRO PARK NORTH

FLEX SPACE
FOR LEASE

7616 Standish Place

Rockville, MD



CONTACT INFORMATION

Kenneth Fellows
kfellows@klnb.com
301.222.0210

Robert Pugh
rpugh@klnb.com
301.222.0211

Keiry Martinez
kmartinez@klnb.com
703.334.5629





7610-7616 Standish Pl

Property Facts

Property Type:	Flex
Building Class:	B
RBA:	22,470 SF
Year Built:	1983

Local Amenities



RIO Lakefront

- | | |
|--------------------------|-------------------|
| AMC DINE-IN Cinema | Yard House |
| Courtyard by Marriott | Potbelly |
| Target | Chipotle |
| Barnes & Noble | Nando's Peri-Peri |
| Starbucks | Tara Thai |
| The Bench | KungFu Tea |
| Copper Canyon Grill | BGR |
| California Pizza Kitchen | Guapo's |
| Uncle Julio's | Union Jack's |



Rockville Town Square

- | | |
|----------------------------|---------------|
| Rockville Memorial Library | La Tasca |
| Dawson's Market | Five Guys |
| Finnegan's Wake Irish Pub | Thai Pavilion |
| Vie de France Bakery Cafe | BonChon |
| Lebanese Taverna Cafe | Friendship |
| Marble Slab Creamery | Sushi Damo |
| Buffalo Wild Wings | Spice Xing |
| Starbucks | Berry Cup |
| Peter Chang | Kyoto Matcha |



Downtown Crown

- | | |
|----------------|-----------------------------------|
| Harris Teeter | BurgerIM |
| LA Fitness | Chopt |
| &pizza | Mezeh Mediterranean |
| Coastal Flats | la Madeleine French Bakery & Cafe |
| Starbucks | Old Town Pour House |
| Ted's Bulletin | Ted's Montana Grill |
| Spicelife | Ruth's Chris Steak House |
| Cinnaholic | Paladar Latin Kitchen & Rum Bar |
| Asia Nine MD | |

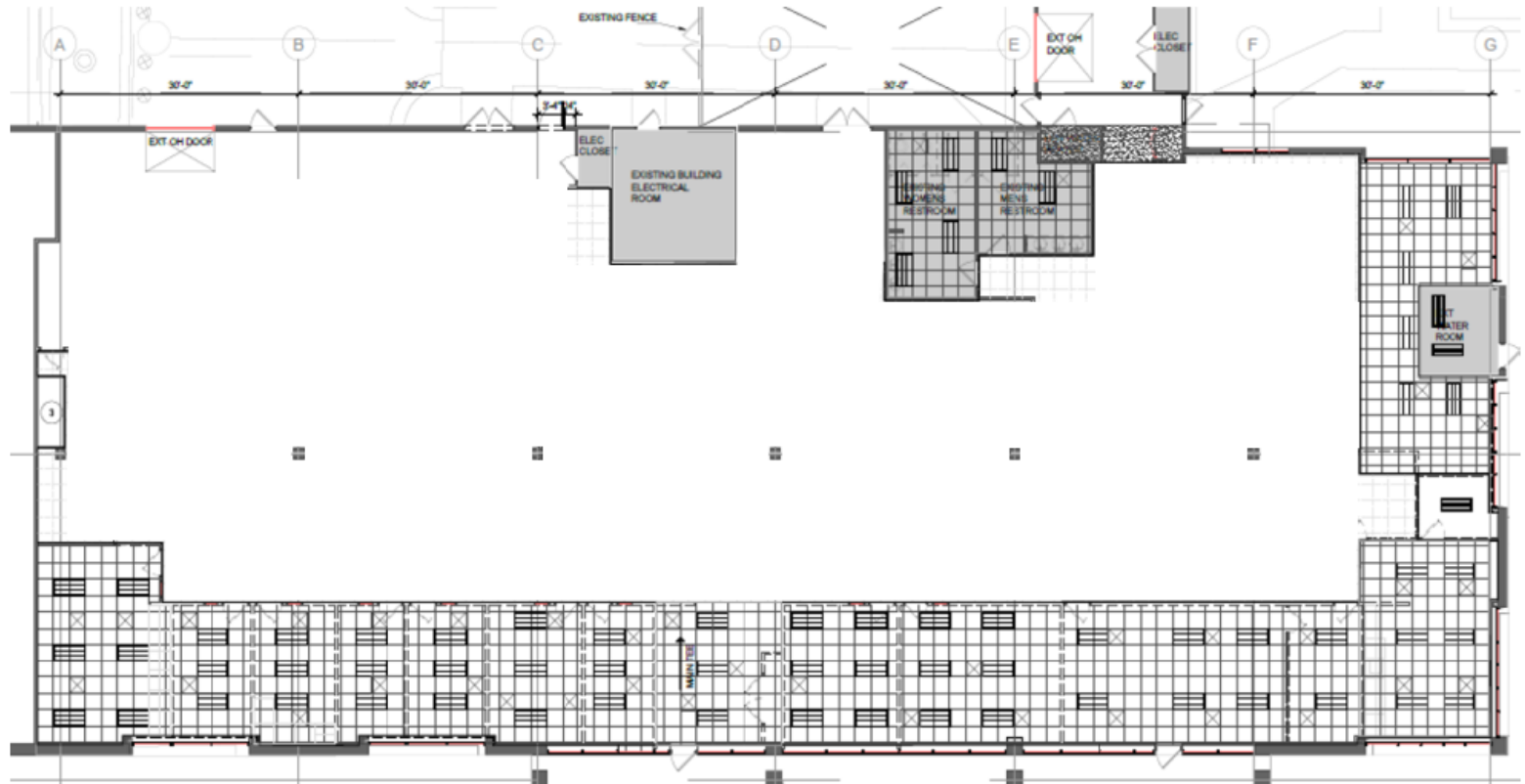
Accessibility

- Strategically located in Montgomery County with convenient access to major commuter routes (I-270, I-370, I-495, and ICC)
- Shady Grove Metro Station - 1.4 miles (4 minutes)
- Rockville Metrorail - 2.1 miles (5 minutes)
- On-site bus stop at Crabbs Branch Way and Standish Place

Floor Plan

Suite 7616

13,797 SF



METRO PARK NORTH

7616 Standish Place
Rockville, Maryland

klnb

2273 Research Blvd
Suite 150
Rockville, MD 20850

301-222-0200
klnb.com

 [in](#) [f](#) /klnbcre

FOR MORE INFORMATION, CONTACT:

Kenneth Fellows

kfellows@klnb.com
301.222.0210

Robert Pugh

rpugh@klnb.com
301.222.0211

Keiry Martinez

kmartinez@klnb.com
703.334.5629

While we have no reason to doubt the accuracy of any of the information supplied, we cannot, and do not, guarantee its accuracy. All information should be independently verified prior to a purchase or lease of the property. We are not responsible for errors, omissions, misuse, or misinterpretation of information contained herein and make no warranty of any kind, express or implied, with respect to the property or any other matters.