



Available For Lease

Park 5 Business Center

200 Hawthorne Ave SE
Salem, OR 97301

Offering Memorandum Presented By:
Jeff Corner
Principal Broker
jeff@cohocommercial.com
503.584.1838
cohocommercial.com

Peter Braunworth
Principal Broker
peter@cohocommercial.com
971.707.4646 x103





Park 5 Business Center

200 Hawthorne Ave SE, Salem, OR 97301

Table of Contents

PROPERTY INFORMATION	3
LOCATION INFORMATION	9
DEMOGRAPHICS	13

Confidentiality & Disclaimer

All materials and information received or derived from Coho Commercial its directors, officers, agents, advisors, affiliates and/or any third party sources are provided without representation or warranty as to completeness, veracity, or accuracy, condition of the property, compliance or lack of compliance with applicable governmental requirements, developability or suitability, financial performance of the property, projected financial performance of the property for any party's intended use or any and all other matters.

Neither Coho Commercial its directors, officers, agents, advisors, or affiliates makes any representation or warranty, express or implied, as to accuracy or completeness of the any materials or information provided, derived, or received. Materials and information from any source, whether written or verbal, that may be furnished for review are not a substitute for a party's active conduct of its own due diligence to determine these and other matters of significance to such party. Coho Commercial will not investigate or verify any such matters or conduct due diligence for a party unless otherwise agreed in writing.

EACH PARTY SHALL CONDUCT ITS OWN INDEPENDENT INVESTIGATION AND DUE DILIGENCE.

Any party contemplating or under contract or in escrow for a transaction is urged to verify all information and to conduct their own inspections and investigations including through appropriate third party independent professionals selected by such party. All financial data should be verified by the party including by obtaining and reading applicable documents and reports and consulting appropriate independent professionals. Coho Commercial makes no warranties and/or representations regarding the veracity, completeness, or relevance of any financial data or assumptions. Coho Commercial does not serve as a financial advisor to any party regarding any proposed transaction. All data and assumptions regarding financial performance, including that used for financial modeling purposes, may differ from actual data or performance. Any estimates of market rents and/or projected rents that may be provided to a party do not necessarily mean that rents can be established at or increased to that level. Parties must evaluate any applicable contractual and governmental limitations as well as market conditions, vacancy factors and other issues in order to determine rents from or for the property.

Legal questions should be discussed by the party with an attorney. Tax questions should be discussed by the party with a certified public accountant or tax attorney. Title questions should be discussed by the party with a title officer or attorney. Questions regarding the condition of the property and whether the property complies with applicable governmental requirements should be discussed by the party with appropriate engineers, architects, contractors, other consultants and governmental agencies. All properties and services are marketed by Coho Commercial in compliance with all applicable fair housing and equal opportunity laws.

Offering Memorandum Presented By:

Jeff Corner

Principal Broker

jeff@cohocommercial.com

503.584.1838

cohocommercial.com

Peter Braunworth

Principal Broker

peter@cohocommercial.com

971.707.4646 x103



PROPERTY INFORMATION

Section 1

Offering Memorandum Presented By:
Jeff Corner
Principal Broker
jeff@cohocommercial.com
503.584.1838
cohocommercial.com

Peter Braunworth
Principal Broker
peter@cohocommercial.com
971.707.4646 x103

**Goho**
COMMERCIAL

Park 5 Business Center

200 Hawthorne Ave SE, Salem, OR 97301



Property Description

Seven (7) building business park suitable for office, retail, flex and light industrial uses. IC - Commercial Industrial zone provides for excellent flexibility of tenant uses. Convenient, central Salem location with good parking and access.

Location Description

Park 5 Business Center is located on the corner of Hawthorne Ave SE and State St in central Salem.

Features

- Park 5 Business Center is one of Salem's premier business parks. Tenants and visitors benefit from the convenient central location, abundant parking, close proximity to I-5 and Hwy 22, and a high quality, diverse tenant mix.
- Abundant on-site parking can accommodate a wide range of office, retail and flex uses.
- IC-Commercial Industrial zone provides for a wide range of office, medical, retail, light industrial, and flex uses.
- Cable internet, DSL, fiber, satellite, and T-1 available to the site.
- Concrete-tilt construction, open floor plates, and high ceilings allow for flexible space plans and interior design options.
- Industrial-level, 3-phase, 240 amp electrical power is available.
- Most spaces available with one or more 10x12 grade-level roll doors.
- Well-maintained, nicely landscaped environment with pond and greenbelts.
- Excellent, highly visible building signage to Hawthorne Ave SE (Buildings A and E), State Street (Building G), and I-5 (Buildings G, F, and D).
- Available illuminated monument sign on Hawthorne Ave SE, subject to separate negotiation.
- On-site restaurant (Momiji Sushi Restaurant)

Offering Memorandum Presented By:

Jeff Corner

Principal Broker

jeff@cohocommercial.com

503.584.1838

cohocommercial.com

Peter Braunworth

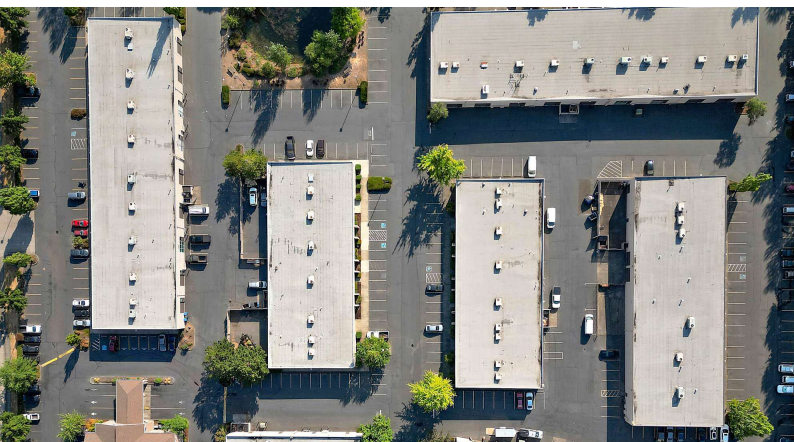
Principal Broker

peter@cohocommercial.com

971.707.4646 x103

Park 5 Business Center

200 Hawthorne Ave SE, Salem, OR 97301



Location Information

Building Name	Park 5 Business Center
Street Address	200 Hawthorne Ave SE
City, State, Zip	Salem, OR 97301
County	Marion
Cross-Streets	I-5, State Street

Building Information

Building Class	B
Tenancy	Multiple
Number of Floors	1
Number of Buildings	7

Property Highlights

- One of Salem's premier business parks.
- Convenient central Salem location provides easy access from I-5, Hwy 22, Hawthorne Ave SE, and State St.
- Numerous buildings with direct exposure and excellent signage to busy Hawthorne Ave SE and State St. Several buildings with visible signage to southbound I-5.
- Flexible space configurations and size ranges to meet the needs of a wide range of tenant uses.
- High quality and diverse tenant mix.
- Convenient access to area resources and services including retail, restaurants, financial services, and hotels.

Offering Memorandum Presented By:

Jeff Corner

Principal Broker

jeff@cohocommercial.com

503.584.1838

cohocommercial.com

Peter Braunworth

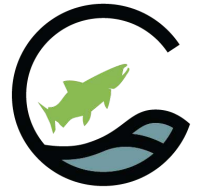
Principal Broker

peter@cohocommercial.com

971.707.4646 x103

Park 5 Business Center

200 Hawthorne Ave SE, Salem, OR 97301



Offering Summary

Lease Rate:	\$0.70 - \$1.30 SF/month (NNN)
CAM:	\$0.50/SF/month
Number of Units:	38
Available SF:	1,481 - 4,956 SF
Lot Size:	10.88 Acres
Total Building SF:	103,300 SF

Tenants

MacDonald-Miller Facility Solutions
 Sleeptech CPAP Supplies
 Cascade Living Group
 AT&T
 Judah Labor Force
 State of Oregon - Oregon Liquor and Cannabis Commission
 Garten Services Inc
 Adventures with Autism
 Oregon Appraiser Certification & Licensure Board
 Oregon Lock & Access
 Merry Maids
 NuMotion
 Rigado, Inc.
 Silke Communications
 1525, Inc.
 Quest Diagnostics
 Oregon Board of Accountancy
 DSP Connections
 Debbie Williams Counseling
 Clima-Tech
 Momiji Sushi Restaurant
 Northwest Mobility
 Therapeutic Associates
 OTAK
 Around the Clock Support Services
 Roseburg Therapy
 Window Supply Company
 PT Northwest

Spaces	Lease Rate	Space Size
Suite A-120	\$1.30 SF/month	2,100 SF
Suite E-510	\$1.30 SF/month	1,481 SF
Suite E-530	\$1.30 SF/month	2,856 SF
Suite F-606	\$1.20 SF/month	2,250 SF
Suite F-610	\$1.20 SF/month	2,100 SF
Suite G-720	\$1.30 SF/month	2,446 SF

Additional information including photos and floor plans can be found on www.CohoCommercial.com or is available upon request.

Offering Memorandum Presented By:
Jeff Corner **Peter Braunworth**
 Principal Broker Principal Broker
jeff@cohoccommercial.com peter@cohoccommercial.com
 503.584.1838 971.707.4646 x103
cohoccommercial.com



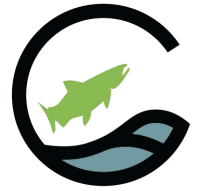
Park 5 Business Center

200 Hawthorne Ave SE, Salem, OR 97301



Offering Memorandum Presented By:
Jeff Corner Principal Broker
jeff@cohocommercial.com
503.584.1838
cohocommercial.com

Peter Braunworth Principal Broker
peter@cohocommercial.com
971.707.4646 x103



Park 5 Business Center

200 Hawthorne Ave SE, Salem, OR 97301

Available Spaces

Suite	Size (SF)	Lease Rate	Description
■ Suite A-120	2,100 SF	\$1.30 SF/month	Space consists of 2,100 SF and features one (1) large private office or conference room (approximately 300 SF) with the remainder of the space consisting of open office area, one (1) restroom, break room and a storage/IT closet. Can be easily combined with adjacent suite A-100 for 6,450 SF. Direct frontage to high-traffic Hawthorne Ave SE, with excellent visibility, signage and parking. Suitable for office and some retail uses.
■ Suite E-510	1,481 SF	\$1.30 SF/month	1,481 SF suitable for office, retail or a professional service provider. This space benefits from direct frontage and high visibility to Hawthorne Ave. SE and good storefront parking. The space is divided between a large, open front area, single ADA restroom, large conference/ private office with a kitchenette and a second private office at the rear also suitable for storage, a small conference room, work/production room or inventory. An as-built space plan is available upon request.
■ Suite E-530	2,856 SF	\$1.30 SF/month	2,856 SF office. One of Park 5's best locations, directly at the main Hawthorne Ave. entrance. Excellent visibility, access, signage and parking. Would make excellent medical or dental office space or any use where visibility and easy access is valued. This suite consists of four (4) private offices, open office areas, large conference room, work room, reception area, break room and two (2) restrooms.
■ Suite F-606	2,250 SF	\$1.20 SF/month	2,241 SF of predominantly open office/flex space, with two (2) small private offices, two (2) restrooms, coffee bar and an approximate 300 SF storage/warehouse area with a 10x12 roll door. Large open office space with excellent natural light from the abundant windows. Fenced yard area is available subject to negotiation. Can be combined with adjacent suite F-610 for 4,337 SF and would include the existing fenced yard area.
■ Suite F-610	2,100 SF	\$1.20 SF/month	2,096 SF office space with shop area and consisting of five (5) private offices, reception/lobby, two (2) restrooms, break room and approximate 500 SF warehouse/shop area with a 10 x 12 roll door. Can be combined with adjacent suite F-606 to total 4,337 SF and would include exclusive use of the fenced yard area. If leased separately from F-606, use of the yard area would be subject to negotiation.
■ Suite G-720	2,446 SF	\$1.30 SF/month	2,450 SF of professional office space located at the State St. entrance to Park 5. Great visibility, access and signage.

Offering Memorandum Presented By:

Jeff Corner

Principal Broker

jeff@cohocommercial.com

503.584.1838

cohocommercial.com

Peter Braunworth

Principal Broker

peter@cohocommercial.com

971.707.4646 x103



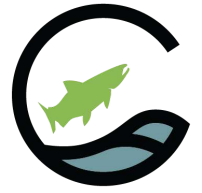
LOCATION INFORMATION

Section 2

Offering Memorandum Presented By:
Jeff Corner
Principal Broker
jeff@cohocommercial.com
503.584.1838
cohocommercial.com

Peter Braunworth
Principal Broker
peter@cohocommercial.com
971.707.4646 x103





Park 5 Business Center

200 Hawthorne Ave SE, Salem, OR 97301



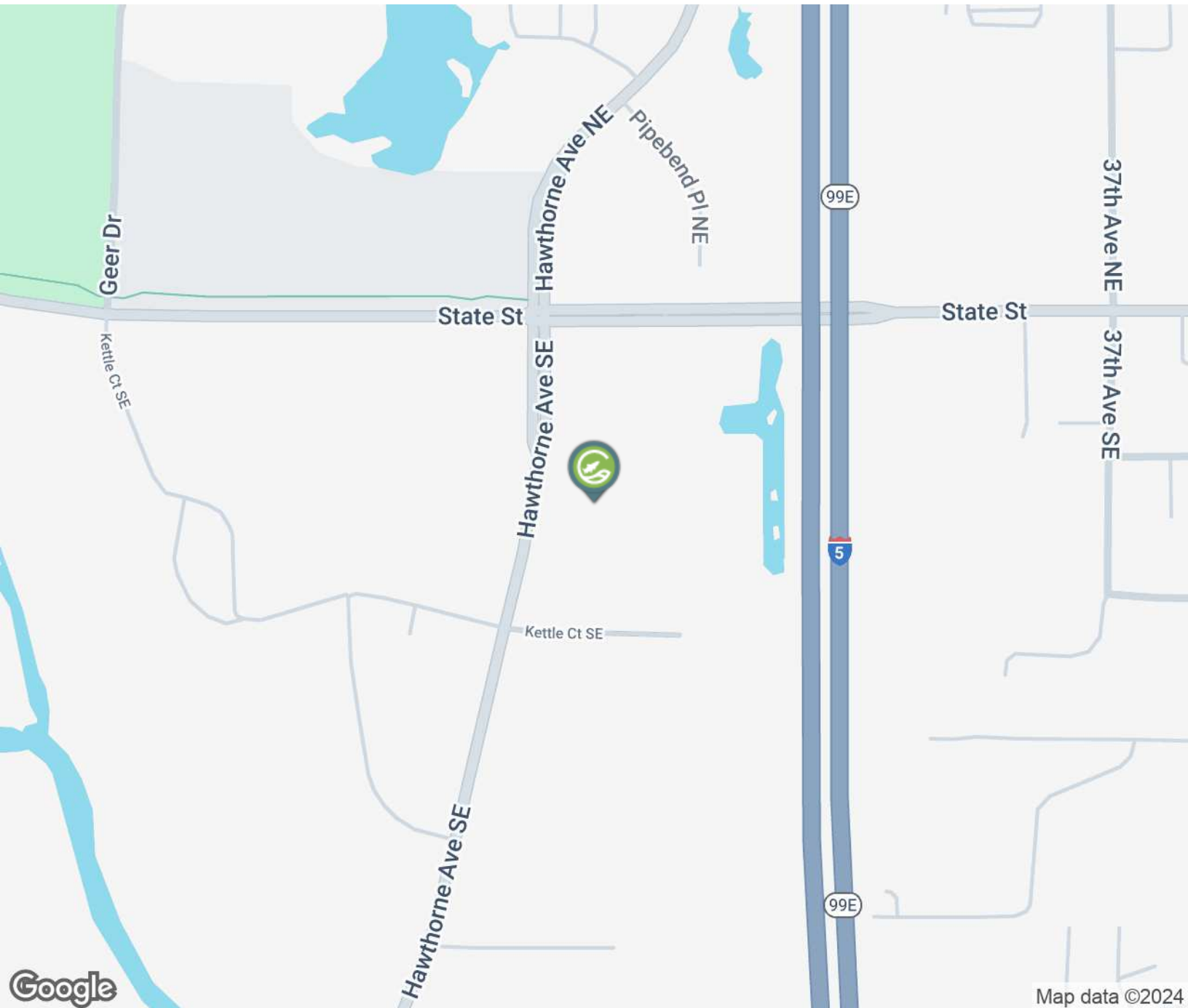
Offering Memorandum Presented By:
Jeff Corner Principal Broker
jeff@cohocommercial.com 503.584.1838
cohocommercial.com

Peter Braunworth Principal Broker
peter@cohocommercial.com 971.707.4646 x103



Park 5 Business Center

200 Hawthorne Ave SE, Salem, OR 97301



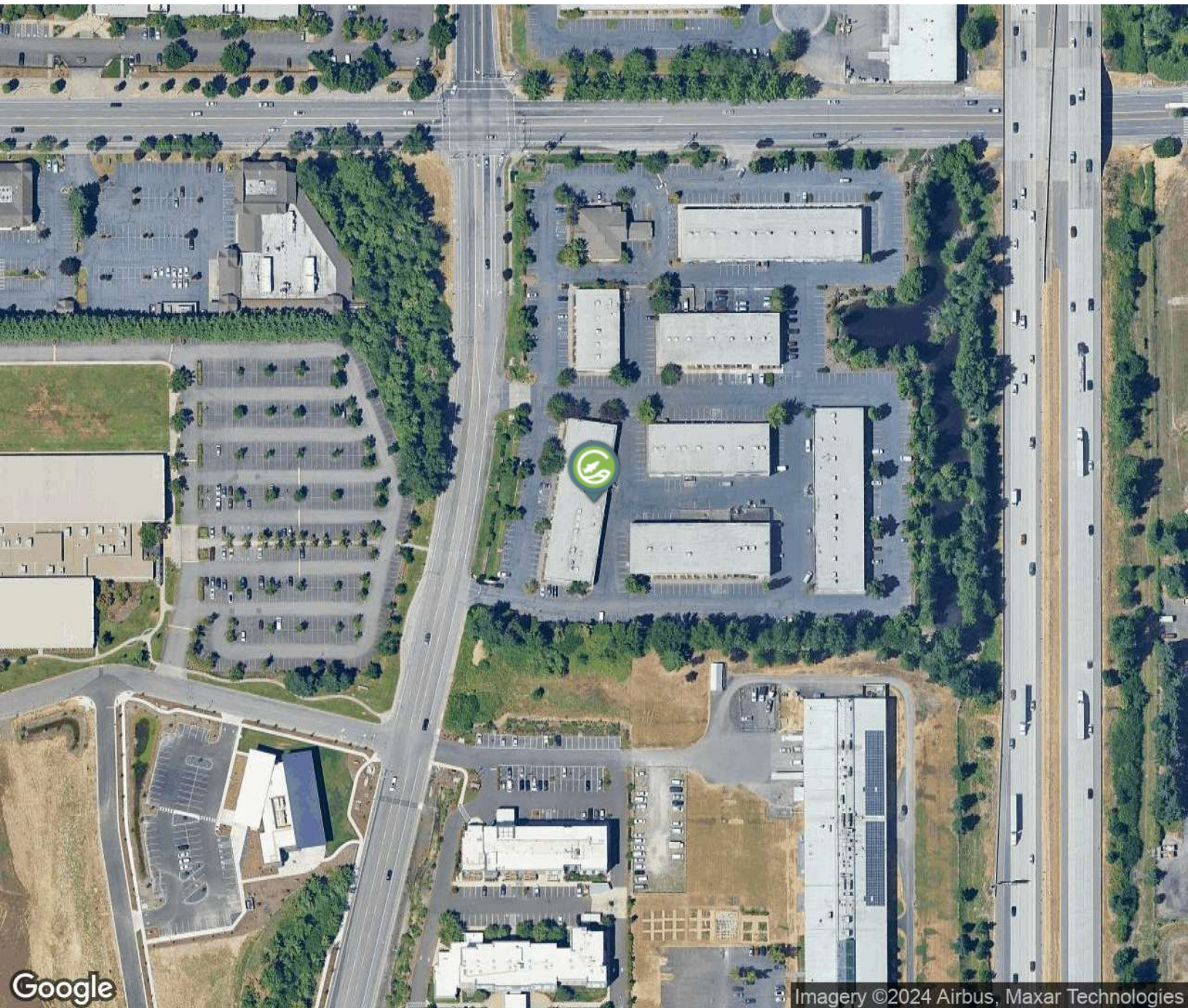
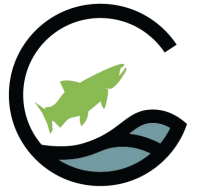
Offering Memorandum Presented By:
Jeff Corner Principal Broker
jeff@cohocommercial.com 503.584.1838
cohocommercial.com

Peter Braunworth Principal Broker
peter@cohocommercial.com 971.707.4646 x103

Aerial Map

Park 5 Business Center

200 Hawthorne Ave SE, Salem, OR 97301



Offering Memorandum Presented By:

Jeff Corner

Principal Broker

jeff@cohocommercial.com

503.584.1838

cohocommercial.com

Peter Braunworth

Principal Broker

peter@cohocommercial.com

971.707.4646 x103

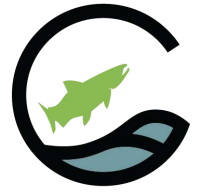


DEMOGRAPHICS

Section 3

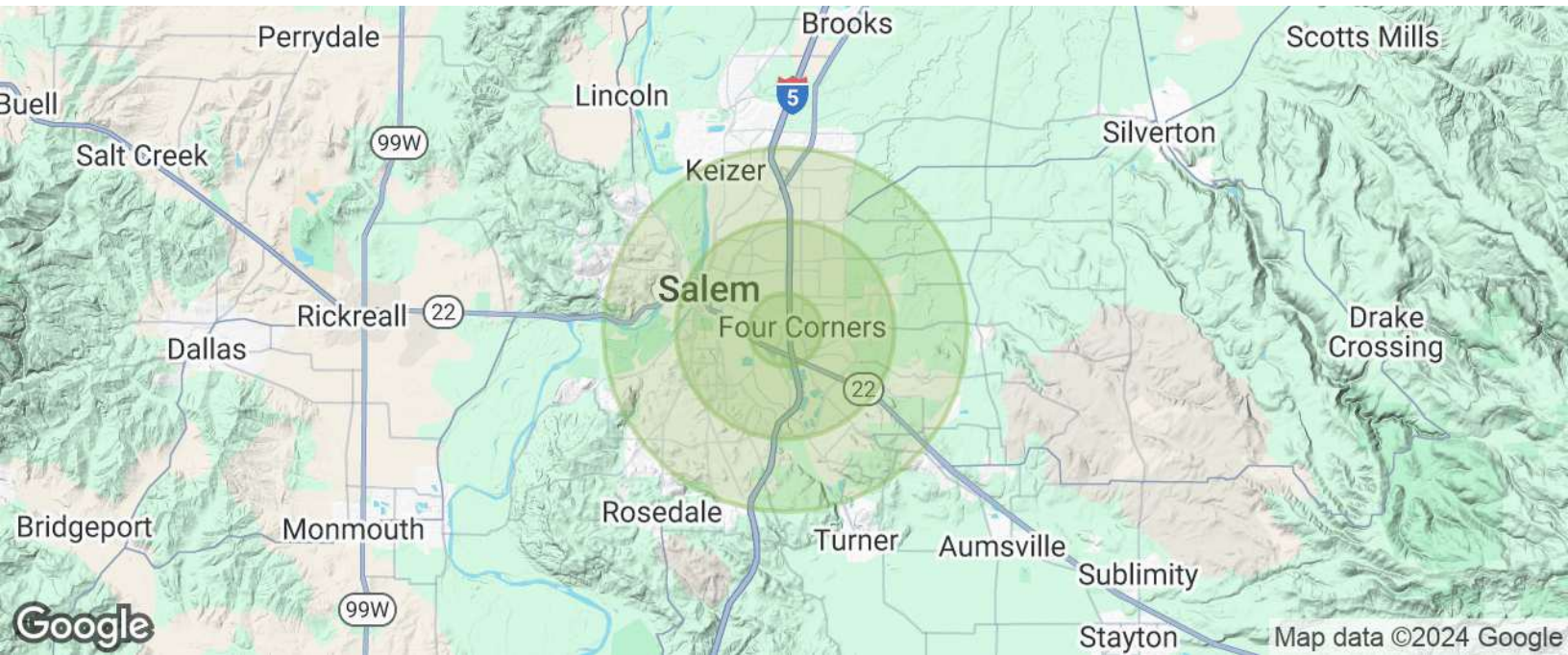
Offering Memorandum Presented By:
Jeff Corner **Peter Braunworth**
Principal Broker Principal Broker
jeff@cohocommercial.com peter@cohocommercial.com
503.584.1838 971.707.4646 x103
cohocommercial.com





Park 5 Business Center

200 Hawthorne Ave SE, Salem, OR 97301



Population	1 Mile	3 Miles	5 Miles
Total Population	12,009	99,019	216,650
Average Age	39.0	35.5	36.4
Average Age (Male)	36.5	35.2	35.8
Average Age (Female)	38.2	35.3	36.8

Households & Income	1 Mile	3 Miles	5 Miles
Total Households	3,869	36,601	81,865
# of Persons per HH	3.1	2.7	2.6
Average HH Income	\$52,968	\$61,374	\$70,208
Average House Value	\$196,806	\$209,542	\$240,962

* Demographic data derived from 2020 ACS - US Census

Offering Memorandum Presented By:
Jeff Corner Peter Braunworth
Principal Broker Principal Broker
jeff@cohocommercial.com peter@cohocommercial.com
503.584.1838 971.707.4646 x103
cohocommercial.com