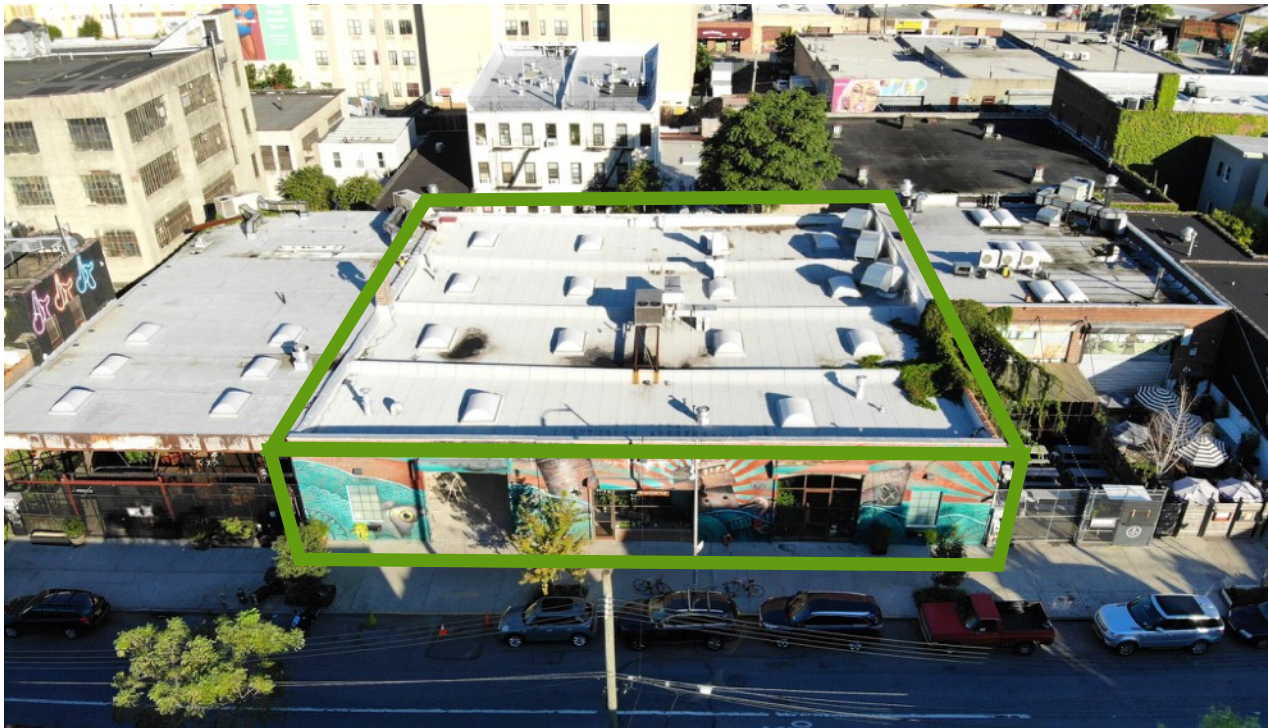


421 TROUTMAN STREET

Between Wyckoff Avenue and St. Nicholas Avenue

PRIME RETAIL SPACE FOR LEASE

10,000 SF Ground Level	100' Frontage	14 Skylights	16' Ceiling Height	Bushwick Neighborhood
----------------------------------	-------------------------	------------------------	------------------------------	---------------------------------



Asking Rent

Please Inquire

Possession

60 days

Notes

- **100 feet of Prime Retail Frontage**
- This block is Bushwick's main destination for tourists and New Yorkers for all forms of **dining, drinking, and entertainment!**
- Just around the corner from the **Jefferson L Train** - two million in annual ridership.
- Ideal for a large scale hospitality destination, music venue, fitness concepts, Pickleball, shuffleboard, games, beer & food hall, etc.

Neighbors

House of Yes, Brooklyn Made, Cocktail Magique, Artichoke Pizza, Bulbap Grill, KCBC, Company XIV, Turks Inn, Nook, GP81, Metrorock, Carousel.

Term

Long-term

Status

Available

MCRE Exclusive Agents

Max Lu // 917.330.3860 // max@mcre.nyc

Jamie Pelletier // 203.592.1212 // jamie@mcre.nyc

Weblink



421 TROUTMAN STREET

Between Wyckoff Avenue and St. Nicholas Avenue



MCRE Exclusive Agents

Max Lu // 917.330.3860 // max@mcre.nyc

Jamie Pelletier // 203.592.1212 // jamie@mcre.nyc



421 TROUTMAN STREET

Between Wyckoff Avenue and St. Nicholas Avenue

PRIME RETAIL SPACE FOR LEASE



POSSIBILITIES



MCRE Exclusive Agents

Max Lu // 917.330.3860 // max@mcre.nyc

Jamie Pelletier // 203.592.1212 // jamie@mcre.nyc



The information contained herein has either been given to us by the owner of the property or obtained from sources that we deem reliable. While we have no reason to doubt the accuracy of this information, we make no representation or guarantee as to its accuracy. All information is submitted subject to errors, omissions, change of price, prior sale or lease, or withdrawal without notice. This information may include estimates and/or projections with respect to future events, and these future events may or may not actually occur. No binding representations or agreements regarding commissions may be made via email; they must be put in writing in a document signed by both parties. All rights to content, photographs and graphics are property of the broker or property owner. ALL INFORMATION CONTAINED HEREIN SHOULD BE VERIFIED INDEPENDENTLY BY THE PROSPECTIVE BUYER OR TENANT. * denotes planned uses.

421 TROUTMAN STREET

Between Wyckoff Avenue and St. Nicholas Avenue



= Under Development



MCRE Exclusive Agents

Max Lu // 917.330.3860 // max@mcre.nyc

Jamie Pelletier // 203.592.1212 // jamie@mcre.nyc



The information contained herein has either been given to us by the owner of the property or obtained from sources that we deem reliable. While we have no reason to doubt the accuracy of this information, we make no representation or guarantee as to its accuracy. All information is submitted subject to errors, omissions, change of price, prior sale or lease, or withdrawal without notice. This information may include estimates and/or projections with respect to future events, and these future events may or may not actually occur. No binding representations or agreements regarding commissions may be made via email; they must be put in writing in a document signed by both parties. All rights to content, photographs and graphics are property of the broker or property owner. ALL INFORMATION CONTAINED HEREIN SHOULD BE VERIFIED INDEPENDENTLY BY THE PROSPECTIVE BUYER OR TENANT. * denotes planned uses.