



**FOR LEASE**  
Class "A" Office Space

**2131 E Kirkwood Blvd, Southlake, TX 76092**



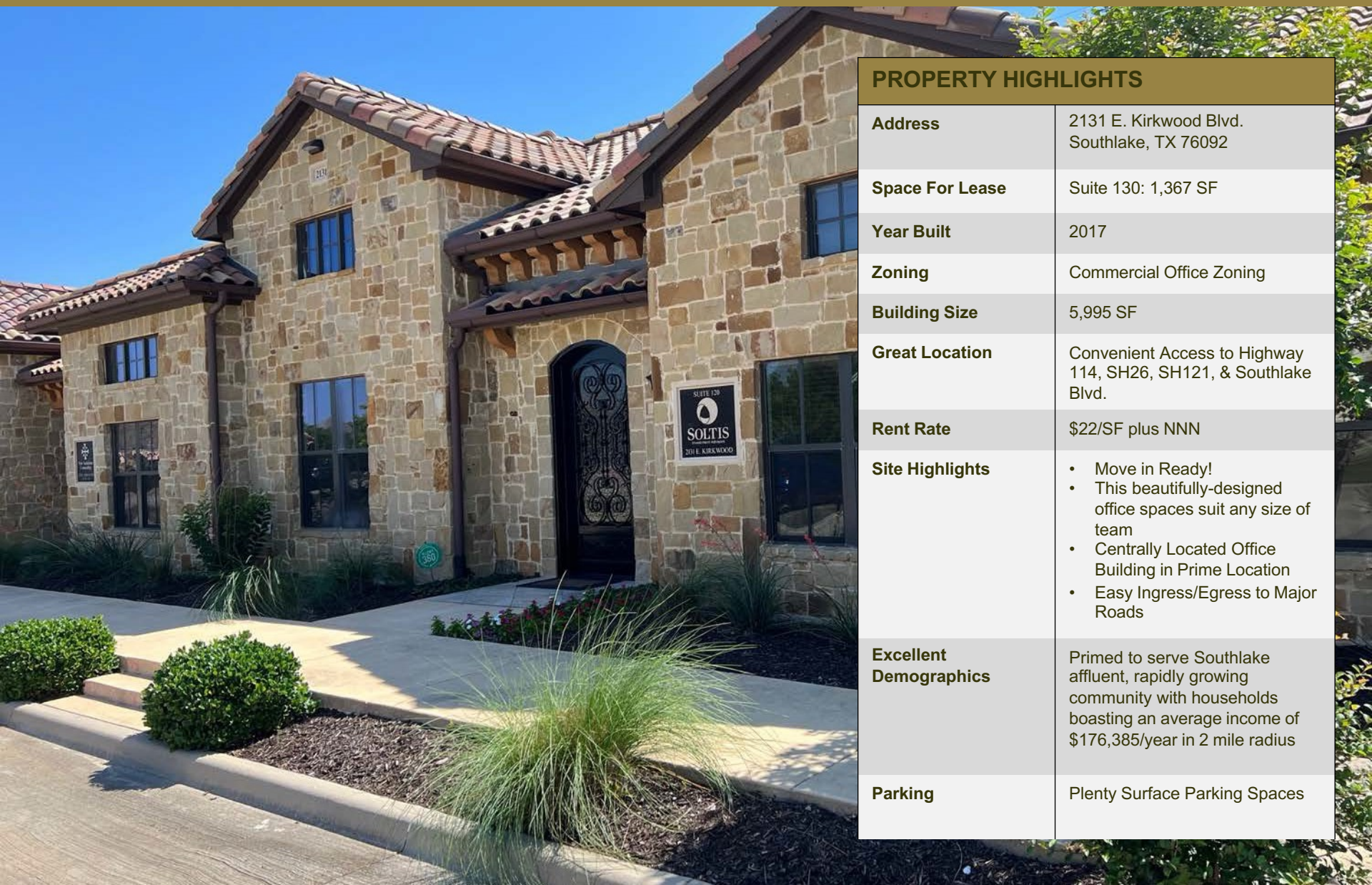


PROPERTY  
HIGHLIGHTS

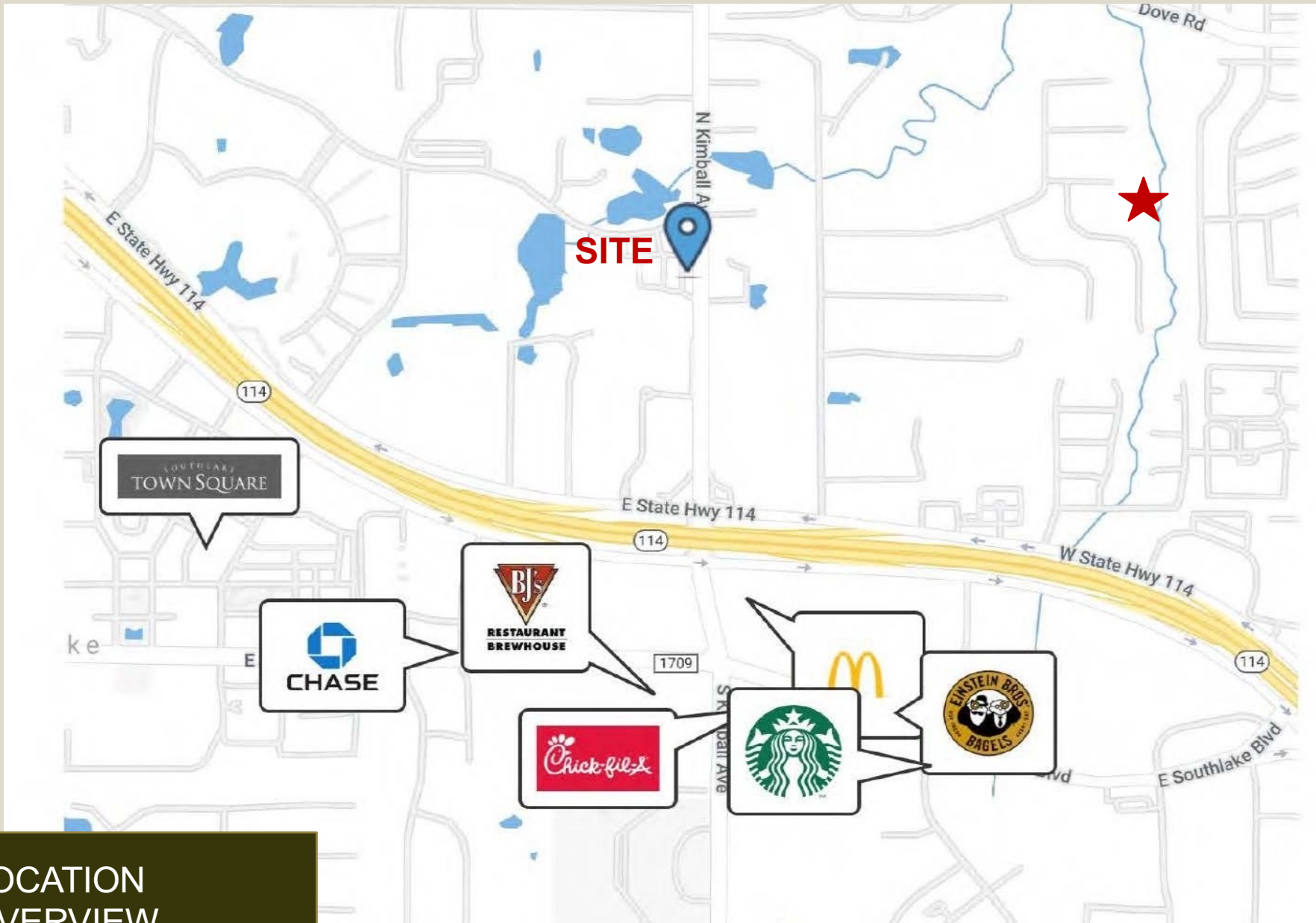


- Move in Ready! Available Now
- Great Mix of Medical and Professional Tenants in the Heart of Southlake
- Class “A” Office Finish Out
- Minutes from Restaurants, Retail and Southlake Town Square and City Hall



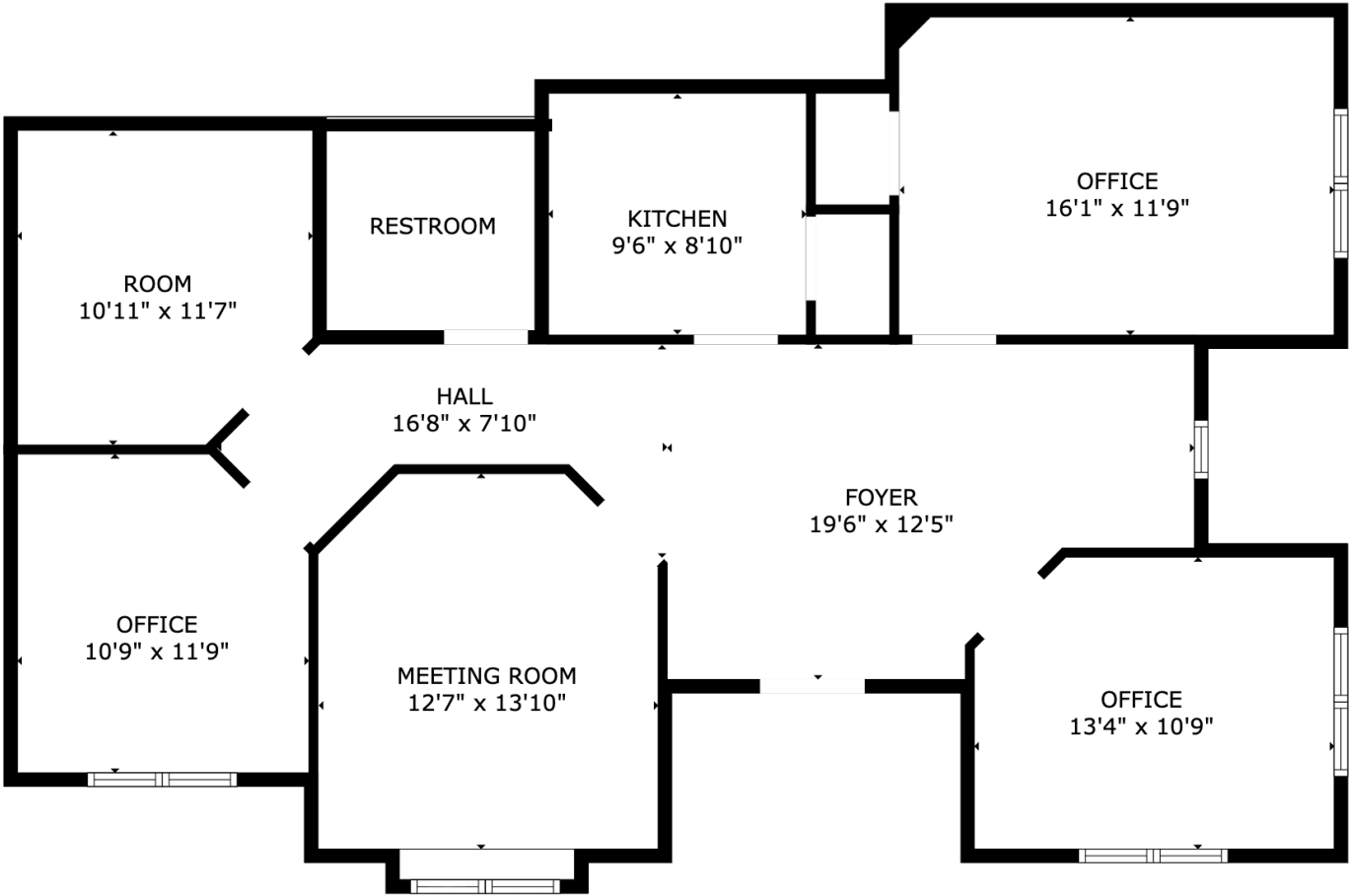


PROPERTY HIGHLIGHTS	
Address	2131 E. Kirkwood Blvd. Southlake, TX 76092
Space For Lease	Suite 130: 1,367 SF
Year Built	2017
Zoning	Commercial Office Zoning
Building Size	5,995 SF
Great Location	Convenient Access to Highway 114, SH26, SH121, & Southlake Blvd.
Rent Rate	\$22/SF plus NNN
Site Highlights	<ul style="list-style-type: none"><li>• Move in Ready!</li><li>• This beautifully-designed office spaces suit any size of team</li><li>• Centrally Located Office Building in Prime Location</li><li>• Easy Ingress/Egress to Major Roads</li></ul>
Excellent Demographics	Primed to serve Southlake affluent, rapidly growing community with households boasting an average income of \$176,385/year in 2 mile radius
Parking	Plenty Surface Parking Spaces



LOCATION  
OVERVIEW

FLOOR  
PLANS







INTERIOR  
PHOTOS





## CONTACT INFORMATION



**PAUL BLIGHT**

Partner

C: 214.682.7192

O: 214.637.4300

[pblight@glaciercommercial.com](mailto:pblight@glaciercommercial.com)



**STACEY YEARIAN**

Vice President

C: 618.530.3550

O: 214.637.4300

[yearian@glaciercommercial.com](mailto:yearian@glaciercommercial.com)

***2131 E Kirkwood Blvd, Southlake, TX 76092* | OFFICE FOR LEASE**



[glaciercommercial.com](http://glaciercommercial.com)

©2023 Glacier Commercial Realty L.P.

All rights reserved. The information contained herein was obtained from sources believed to be reliable. It is subject to verification. The presentation of this property is submitted subject to errors, omissions, change of price or conditions, prior to sale or lease, or withdrawal without notice