

# Marsh Landing Office Park

1400 Marsh Landing Pkwy, Jacksonville Beach, FL 32250



- **Suite #112** +/-3,465 SF  
-Lease Rate \$30.00/SF NNN
- CAM \$8.94/SF
- Available Immediately
- Well maintained building with extensive glass and atrium
- Ample parking with multiple entrances
- Zoning: PUD Office/Professional/Medical
- Building signage at entrance
- Easy access to JT Butler Blvd.
- Building is located at the north entrance to Marsh Landing County Club, close to restaurants and shopping



**STRATEGIC SITES**  
Clifford Commercial

For Additional  
Information Contact:

Katie Kirchner  
katiek@strategicsites.com

OR

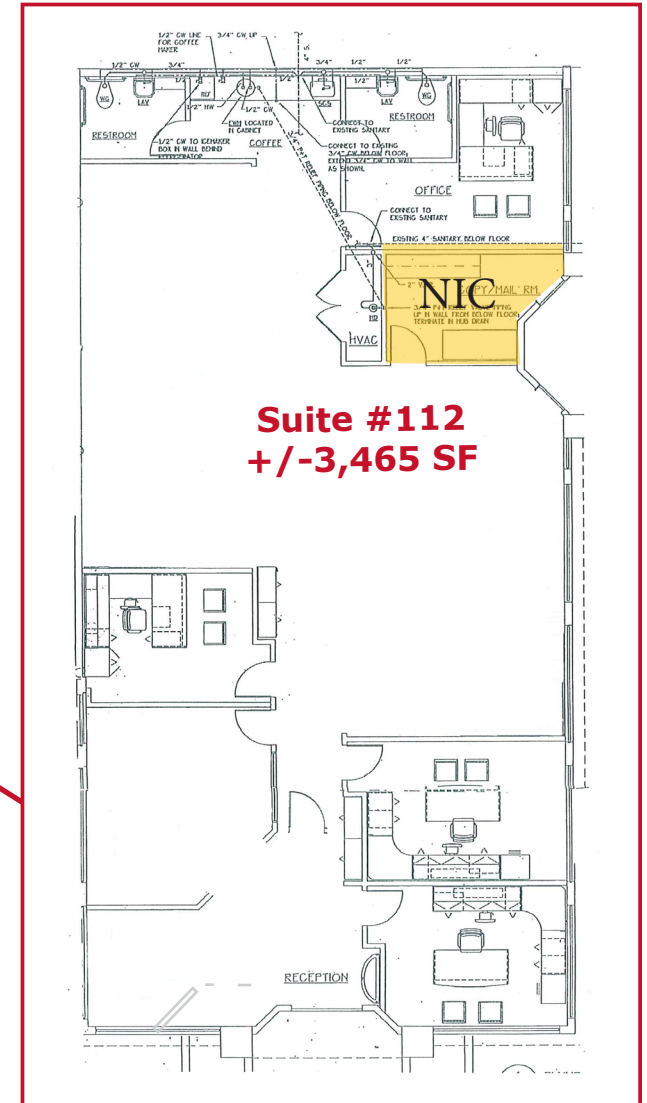
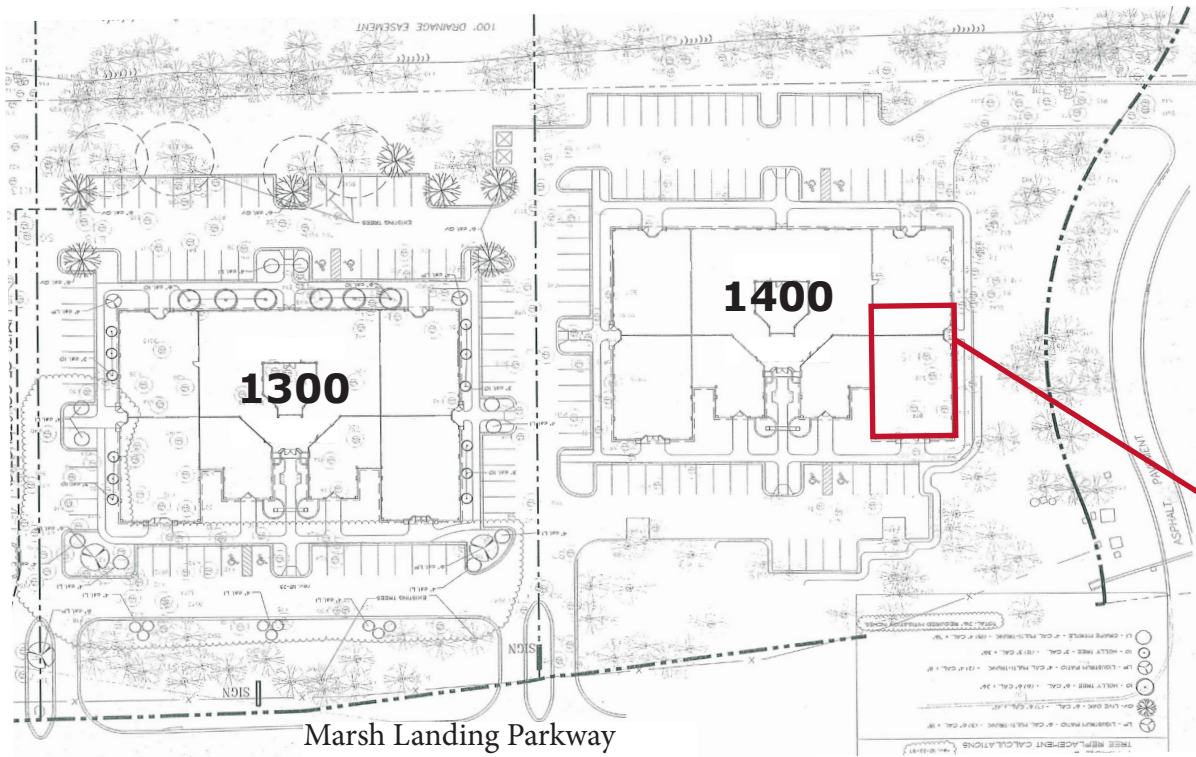
Kate Clifford  
kate@strategicsites.com

422 Jacksonville Drive, Jacksonville Beach, FL ~ 904-242-2828 ~ [www.strategicsites.com](http://www.strategicsites.com)

**Client First through Service, Knowledge and Integrity**

Notice of Disclaimer: Details contained herein are believed to be correct: the information is subject to errors, omissions, price changes, or withdrawal without notice

# Floor Plans

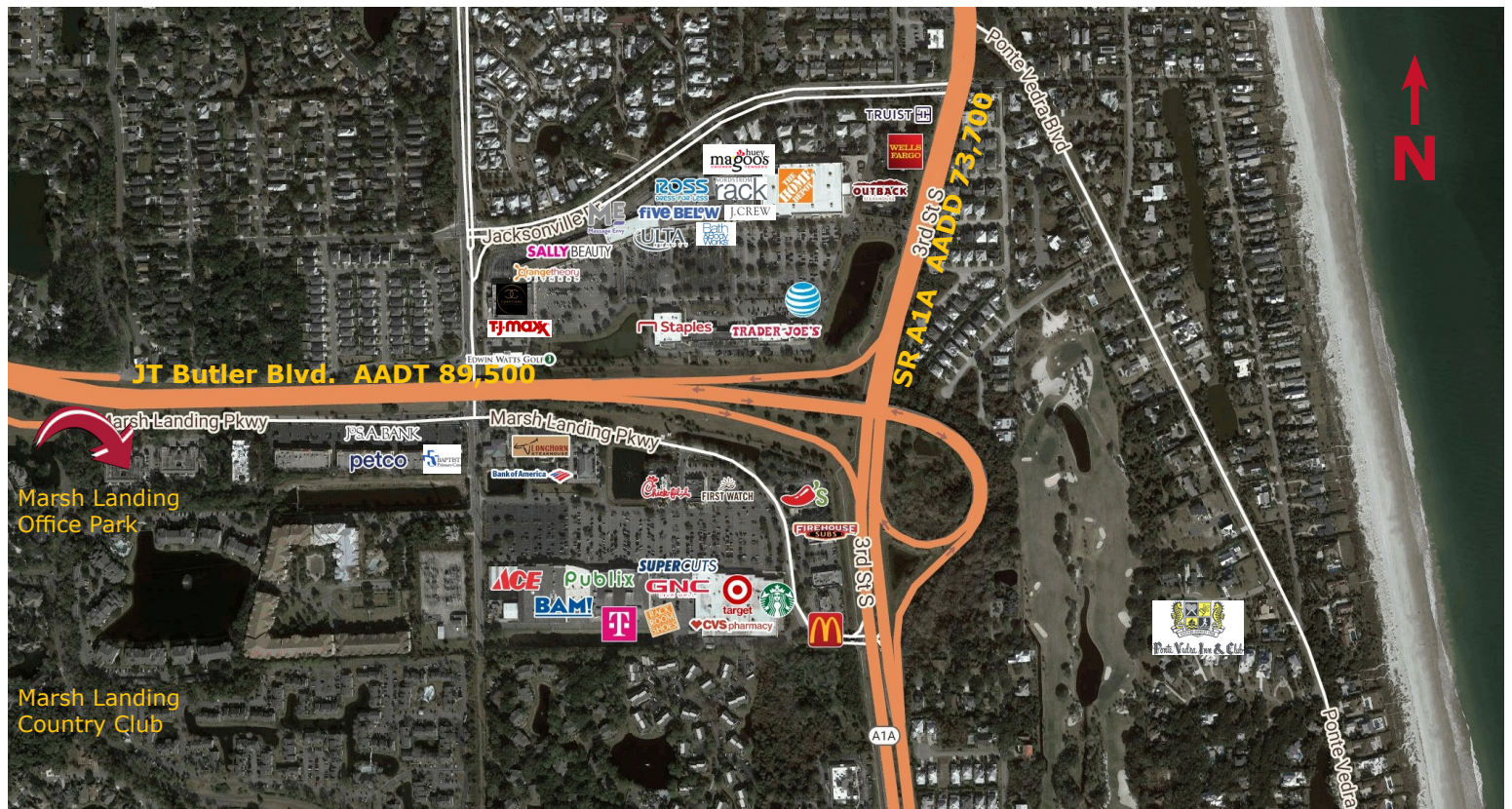


422 Jacksonville Drive, Jacksonville Beach, FL ~ 904-242-2828 ~ [www.strategicsites.com](http://www.strategicsites.com)

**Client First through Service, Knowledge and Integrity**

Notice of Disclaimer: Details contained herein are believed to be correct: the information is subject to errors, omissions, price changes, or withdrawal without notice

# Aerial



422 Jacksonville Drive, Jacksonville Beach, FL ~ 904-242-2828 ~ [www.strategicsites.com](http://www.strategicsites.com)

**Client First through Service, Knowledge and Integrity**

Notice of Disclaimer: Details contained herein are believed to be correct: the information is subject to errors, omissions, price changes, or withdrawal without notice