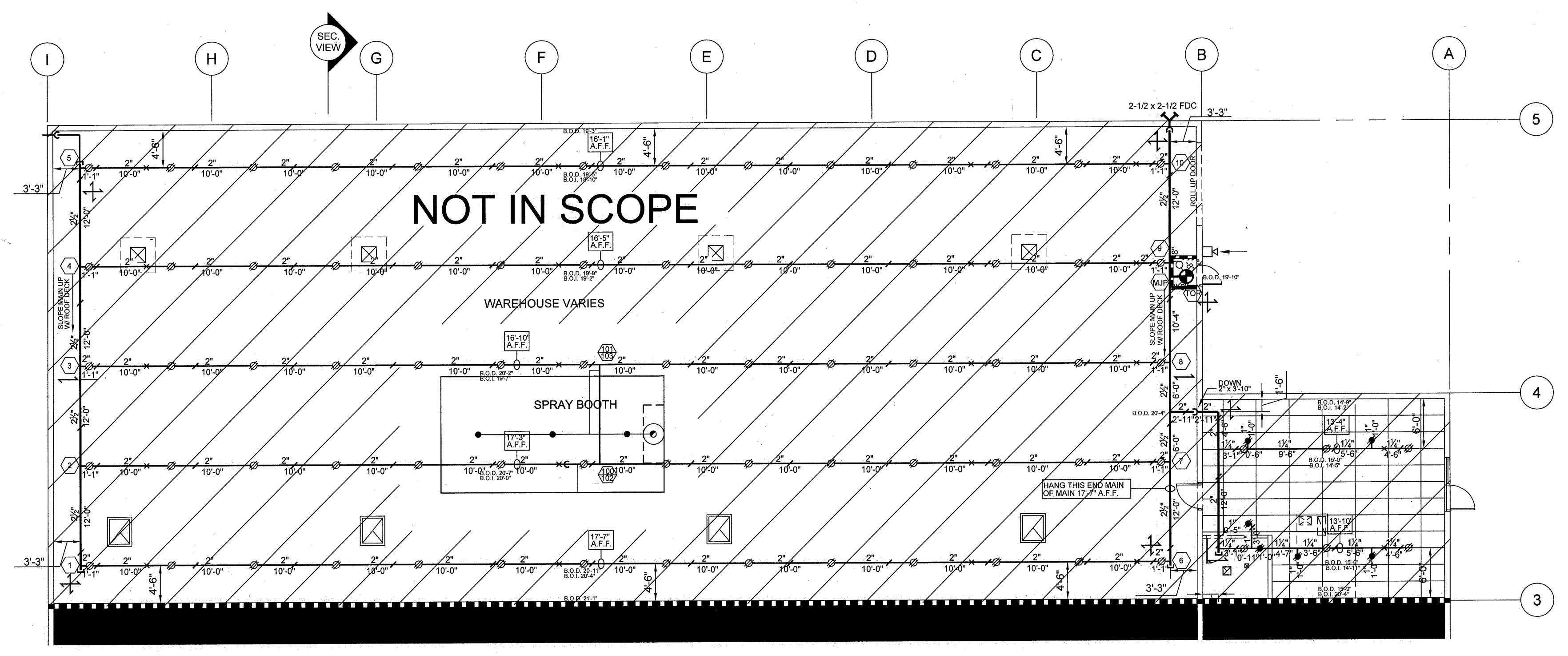


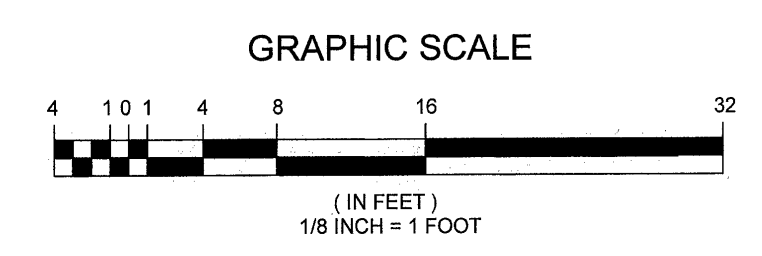
- ALL 1" PIPE TO BE MANUF. DYNATHRO 1.08
- ALL 1 1/2" PIPE TO BE MANUF. DYNFLOW 1.53
- ALL 2" PIPE TO BE MANUF. DYNFLOW 1.72
- ALL 2 1/2" PIPE TO BE MANUF. DYNFLOW 2.06
- ALL 3" PIPE TO BE MANUF. DYNFLOW 2.46
- ALL 4" PIPE TO BE MANUF. DYNFLOW 3.31
- ALL 6" PIPE TO BE MANUF. SCH-10 6.357.8294
- ALL B.L. FITTINGS TO BE CL/D.I.
- ALL MAIN FITTINGS TO BE MECH
- ALL B.L. MAIN FITTINGS TO BE WELDED
- ALL DIMENSIONS ARE CENTER TO CENTER
- ALL MATERIAL TO COMPLY W/ NFPA AND LOCAL CODES
- ALL MATERIAL TO BE UL LISTED AND FM APPROVED FOR PROTECTION AS NOTED
- ALL PIPING TO BE HUNG AND BRACED PER NFPA 13
- SPRINKLER SYSTEM TO BE INSTALLED IN ACCORDANCE WITH 2011 IFC AND 2013 NFPA13
- ALL WATER SUPPLY VALVE AND FLOW SWITCHES SHALL BE SUPERVISED IN ACCORDANCE WITH IFC 903.4
- AUTHORITY HAVING JURISDICTION IS CLARK COUNTY FIRE DEPARTMENT
- SYSTEM HAZARD CLASSIFICATION EXTRA HAZARD
- SYSTEM IS A WET SYSTEM DESIGNED IN TREE CONFIGURATION
- CLG. CONST. TO BE 2X4 ACT, GYP BD, OR EXPOSED TO STURCTURE AS NOTED
- UNDERGROUND PIPING TO BE C-900
- BACKFLOW PREVENTOR 6" DCDA
- PLOT PLAN IS USED FOR HYDRAULIC REFERENCE ONLY
- ALL SMALL ROOM RULE HEADS NOT TO EXCEED 9'-0" FROM 1 WALL NOR 7'-6" FROM OTHER WALLS
- ALL DROPS TO BE ON 1" DYMA THREAD PIPE
- ALL ARMOVERS OVER 2'-0" ARE TO BE HUNG
- * * * DENOTES SMALL ROOM RULE - LIGHT HAZARD ONLY PER NFPA13 2010 3.3.17
- SPRINKLERS SHALL BE MIN. 1'-0" FROM EDGE OF HVAC DIFFUSERS
- NOTIFICATION / HORN STROBE BY OTHERS
- OWNER TO MAINTAIN BLDG. TEMP. MIN 40° FAHRENHEIT
- HYDROSTATIC TEST IS REQUIRED NOT REQUIRED
- BUILDING CONSTRUCTION: OBSTRUCTED UNOBSTRUCTED
 COMBUSTIBLE NON - COMBUSTIBLE
- █ REPRESENT WALL TO DECK
- █ REPRESENT WALL NOT TO DECK
- SPARE HEAD BOX SHALL CONTAIN AT LEAST 1 OF EACH TYPE OF HEAD IN THE SYSTEM FOR A TOTAL OF NO LESS THAN 6 HEADS. ALSO A HEAD WRENCH AND SPRINKLER INFORMATION PACK (SIN, DESCRIPTION, QUANTITY OF EACH TYPE IN BOX, ISSUE OR REVISION DATE)

ACE FIRE SYSTEMS, INC.
5600 WEST 19TH AVE
DENVER, CO 80202
Phone: (702) 364-2932
Fax: (702) 364-7282

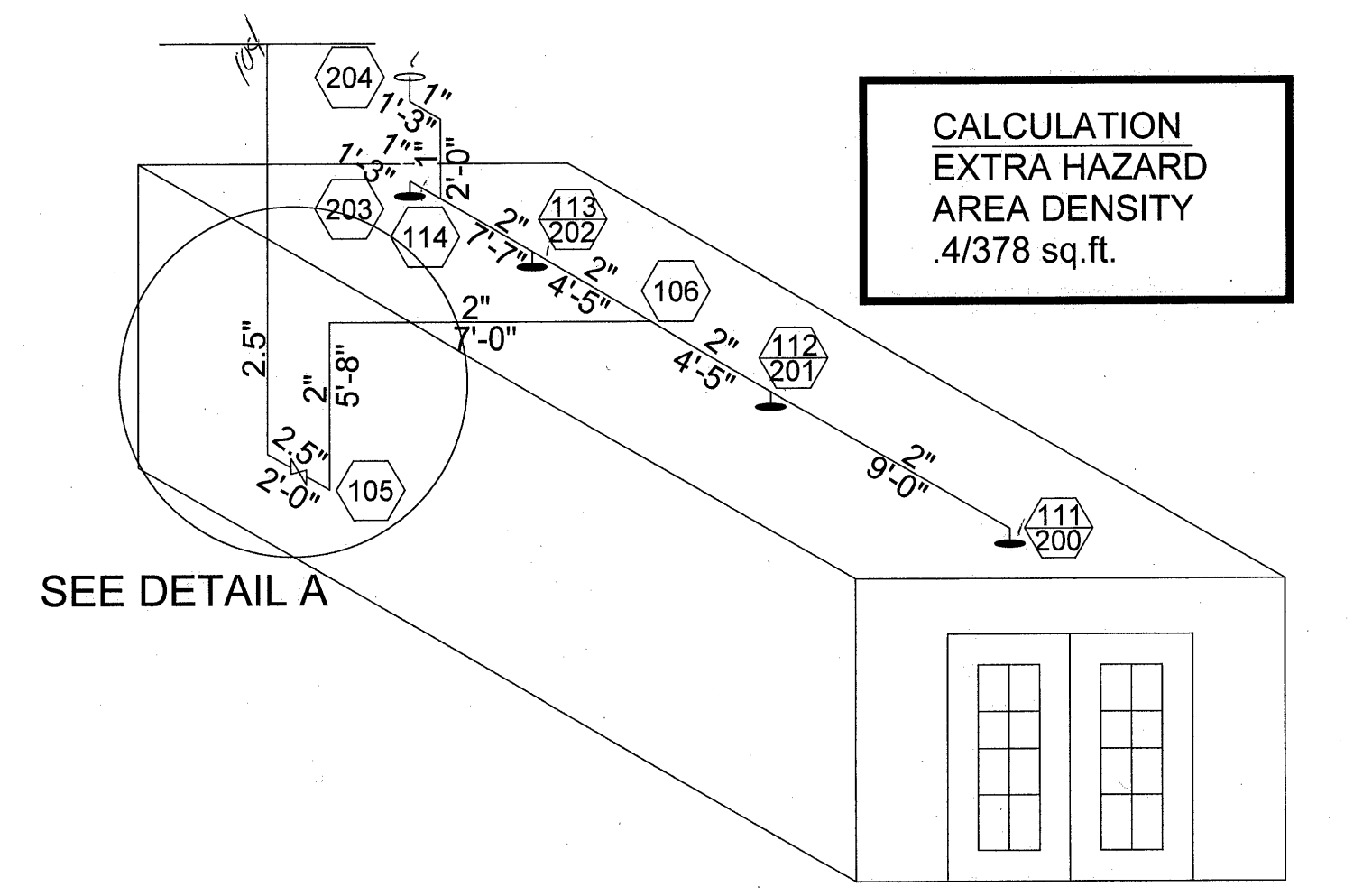
| SYMBOL | DESCRIPTION | QUANTITY |
|--------|--------------------|----------|
| 1 | 1" PIPE | 100 |
| 2 | 1 1/2" PIPE | 150 |
| 3 | 2" PIPE | 170 |
| 4 | 2 1/2" PIPE | 200 |
| 5 | 3" PIPE | 240 |
| 6 | 4" PIPE | 330 |
| 7 | 6" PIPE | 430 |
| 8 | B.L. FITTINGS | 500 |
| 9 | MAIN FITTINGS | 100 |
| 10 | B.L. MAIN FITTINGS | 50 |
| 11 | UL LISTED MATERIAL | 1000 |
| 12 | UL LISTED MATERIAL | 1000 |
| 13 | UL LISTED MATERIAL | 1000 |
| 14 | UL LISTED MATERIAL | 1000 |
| 15 | UL LISTED MATERIAL | 1000 |
| 16 | UL LISTED MATERIAL | 1000 |
| 17 | UL LISTED MATERIAL | 1000 |
| 18 | UL LISTED MATERIAL | 1000 |
| 19 | UL LISTED MATERIAL | 1000 |
| 20 | UL LISTED MATERIAL | 1000 |
| 21 | UL LISTED MATERIAL | 1000 |
| 22 | UL LISTED MATERIAL | 1000 |
| 23 | UL LISTED MATERIAL | 1000 |
| 24 | UL LISTED MATERIAL | 1000 |
| 25 | UL LISTED MATERIAL | 1000 |
| 26 | UL LISTED MATERIAL | 1000 |
| 27 | UL LISTED MATERIAL | 1000 |
| 28 | UL LISTED MATERIAL | 1000 |
| 29 | UL LISTED MATERIAL | 1000 |
| 30 | UL LISTED MATERIAL | 1000 |
| 31 | UL LISTED MATERIAL | 1000 |
| 32 | UL LISTED MATERIAL | 1000 |
| 33 | UL LISTED MATERIAL | 1000 |
| 34 | UL LISTED MATERIAL | 1000 |
| 35 | UL LISTED MATERIAL | 1000 |



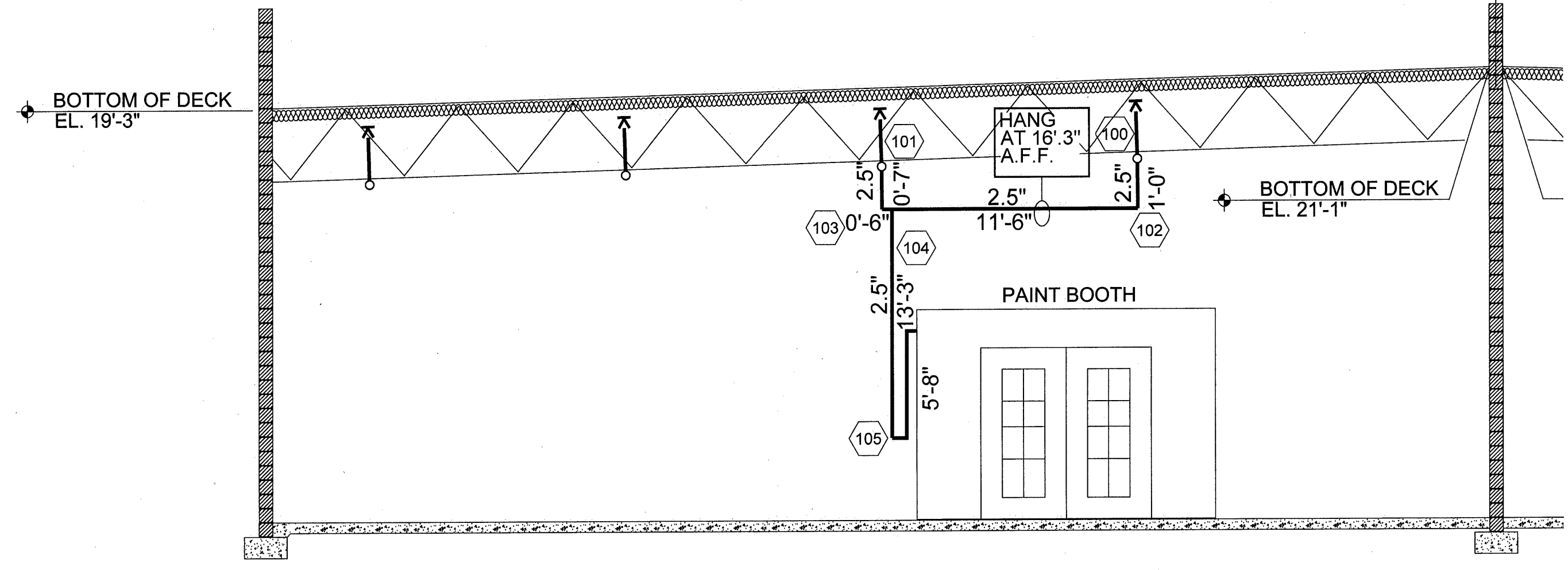
PLAN VIEW AREA 8,624^{SQ.FT.}
SCALE: 1/8" = 1'-0"



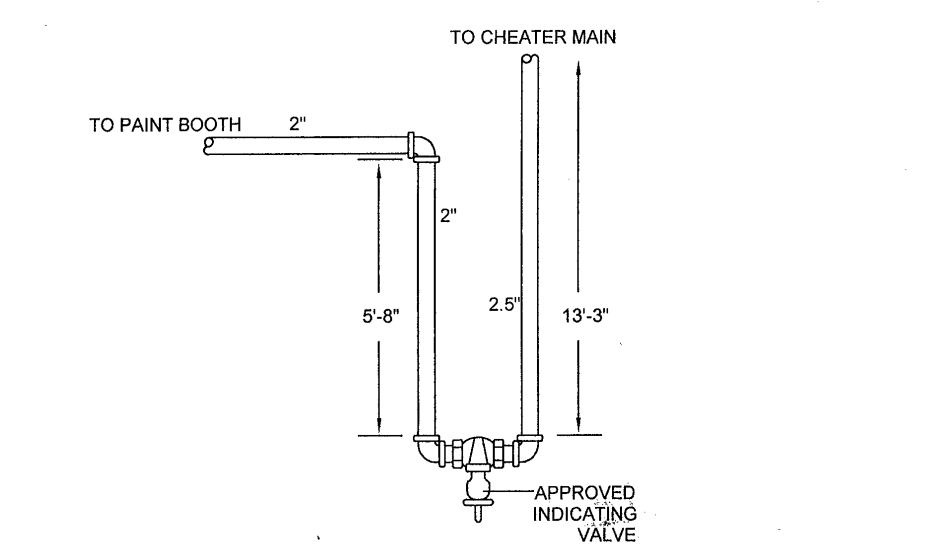
SCOPE OF WORK
1. INSTALLING NEW SPRINKLERS SYSTEM IN NEW PAINT BOOTH.



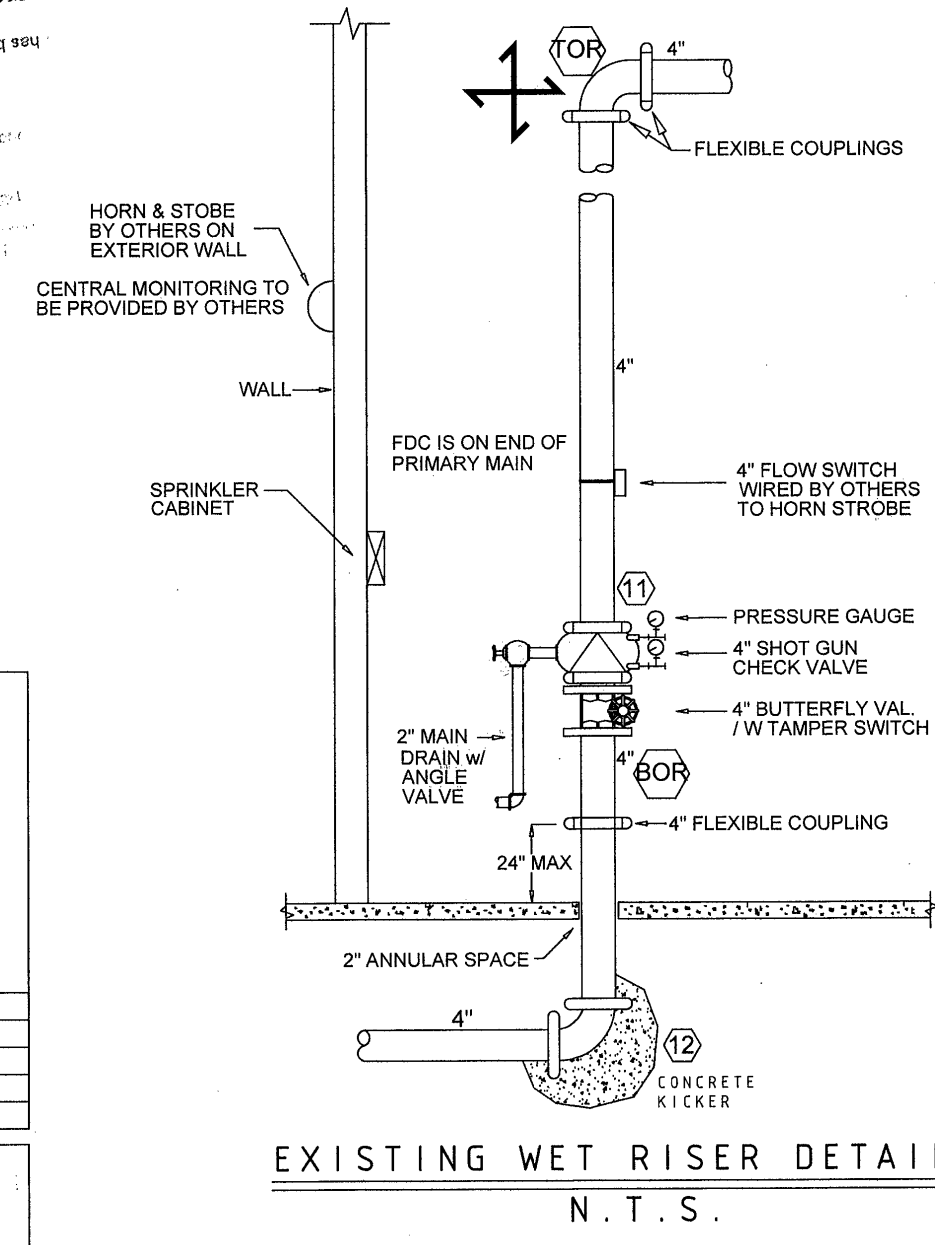
ISOMETRIC VIEW
SCALE: NOT TO SCALE



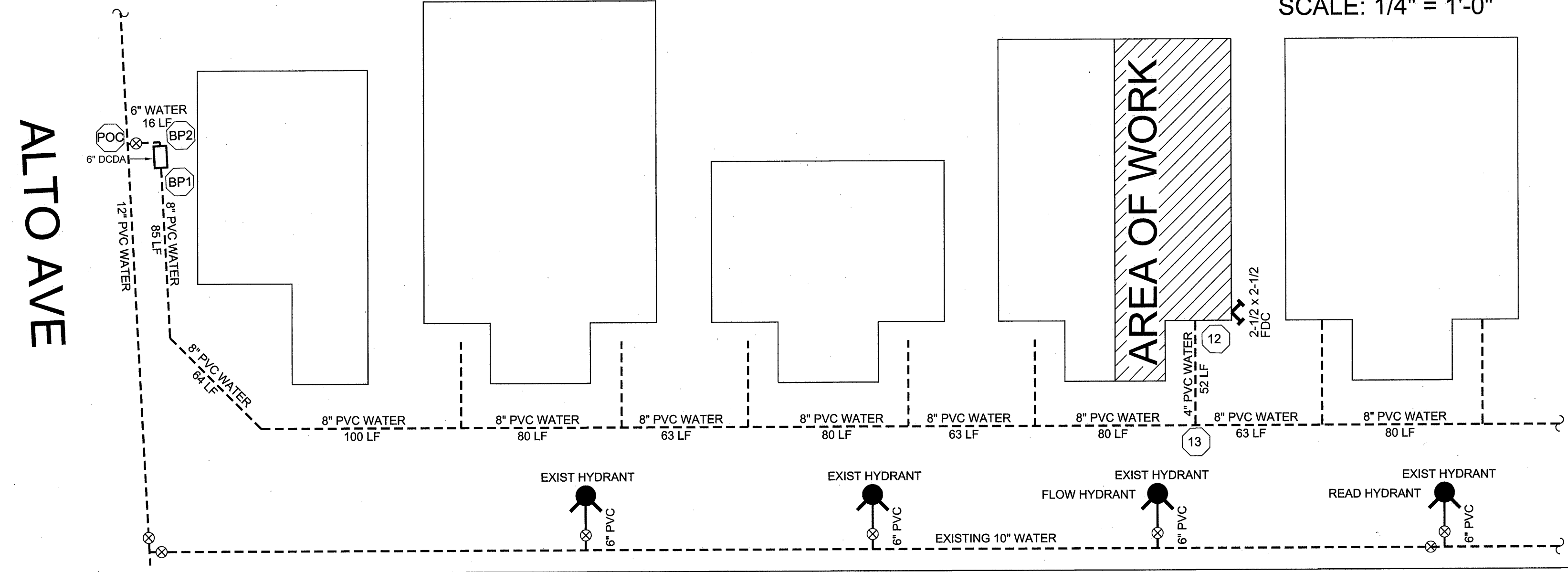
SECTION VIEW
SCALE: 1/4" = 1'-0"



DETAIL A
N.T.S.



EXISTING WET RISER DETAIL
N.T.S.



| NO. | DESCRIPTION | LENGTH (LF) | DIAMETER (IN) | TYPE |
|-----|---------------------------|-------------|---------------|------|
| 1 | WOOD SCREW NO. 15x 1 1/2" | 2 | | |
| 2 | STANDARD PIPE STRAP | 1 | | |
| 3 | PIPE STRAP | 1 | | |
| 4 | PIPE STRAP | 1 | | |
| 5 | PIPE STRAP | 1 | | |
| 6 | PIPE STRAP | 1 | | |
| 7 | PIPE STRAP | 1 | | |
| 8 | PIPE STRAP | 1 | | |
| 9 | PIPE STRAP | 1 | | |
| 10 | PIPE STRAP | 1 | | |
| 11 | PIPE STRAP | 1 | | |
| 12 | PIPE STRAP | 1 | | |
| 13 | PIPE STRAP | 1 | | |
| 14 | PIPE STRAP | 1 | | |
| 15 | PIPE STRAP | 1 | | |
| 16 | PIPE STRAP | 1 | | |
| 17 | PIPE STRAP | 1 | | |
| 18 | PIPE STRAP | 1 | | |
| 19 | PIPE STRAP | 1 | | |
| 20 | PIPE STRAP | 1 | | |
| 21 | PIPE STRAP | 1 | | |
| 22 | PIPE STRAP | 1 | | |
| 23 | PIPE STRAP | 1 | | |
| 24 | PIPE STRAP | 1 | | |
| 25 | PIPE STRAP | 1 | | |
| 26 | PIPE STRAP | 1 | | |
| 27 | PIPE STRAP | 1 | | |
| 28 | PIPE STRAP | 1 | | |
| 29 | PIPE STRAP | 1 | | |
| 30 | PIPE STRAP | 1 | | |
| 31 | PIPE STRAP | 1 | | |
| 32 | PIPE STRAP | 1 | | |
| 33 | PIPE STRAP | 1 | | |
| 34 | PIPE STRAP | 1 | | |
| 35 | PIPE STRAP | 1 | | |
| 36 | PIPE STRAP | 1 | | |
| 37 | PIPE STRAP | 1 | | |
| 38 | PIPE STRAP | 1 | | |
| 39 | PIPE STRAP | 1 | | |
| 40 | PIPE STRAP | 1 | | |
| 41 | PIPE STRAP | 1 | | |
| 42 | PIPE STRAP | 1 | | |
| 43 | PIPE STRAP | 1 | | |
| 44 | PIPE STRAP | 1 | | |
| 45 | PIPE STRAP | 1 | | |
| 46 | PIPE STRAP | 1 | | |
| 47 | PIPE STRAP | 1 | | |
| 48 | PIPE STRAP | 1 | | |
| 49 | PIPE STRAP | 1 | | |
| 50 | PIPE STRAP | 1 | | |

ALTO AVE

Clark County Department of Building and Fire Prevention
MAR 16 2016
Reviewed and Accepted
JoAnne H. Robinson
For Fire Prevention Only

CONTRACTOR
ACE FIRE SYSTEMS, INC.
5600 WEST 19TH AVE
DENVER, CO 80202
Phone: (702) 364-2932
Fax: (702) 364-7282

FANTASTIC PAINT BOOTH
2722 ABELS LANE
LAS VEGAS, NV 89115
FIRE SPRINKLER PLAN

PROJECT NUMBER
16408
SHEET NUMBER
1 of 1

