

4023-4033 N 19TH AVE | PHOENIX, AZ 85015

±10,310 SF RETAIL/OFFICE



FOR SALE

Adam Shteir

Partner

602.769.0521

adam@citywidecre.com

Aimee Sanderson, CCIM

Sales & Leasing

480.678.0809

aimee@citywidecre.com

1645 E Missouri Avenue, Suite 230 • Phoenix, Arizona 85016 • 602.313.1000 • citywidecre.com

citywide
COMMERCIAL REAL ESTATE

All information furnished is from sources deemed reliable. No representation is made as to the accuracy thereof and it is submitted subject to errors, omissions, changes, or withdrawal without notice and to any special listings conditions, including the rate and manner of payment of commissions for particular offerings imposed by principals or agreed to by the company, the terms of which are available to interested principals or brokers. All dimensions are approximate. Owner and/or Broker make no representations expressed or implied as to the accuracy of floor plan/site plan dimensions.

PROPERTY SUMMARY

4023-4033 N 19TH AVENUE
PHOENIX, ARIZONA 85015

BUILDING HIGHLIGHTS

- Sale Price: \$1,725,000 (\$167 PSF)
- +/- 10,310 Square Foot Retail/Office Building
- +/- 1.01 Acre Lot
- Two (2) Freestanding Buildings
- Four (4) Total Parcels:
 - 110-07-089A, 110-07-086, 110-07-081, 110-07-080A
- 125 Amps, Single Phase Power
- Fenced/Gated Lot with Approximately 60 Parking Spaces
- Remodeled in 2024
- 19th Avenue Frontage
- C-2 Zoning, City of Phoenix
- Bldg 1: Private Offices, Reception, Break Room, and Restrooms (1st Floor); Residential Unit with Appliances (2nd Floor)
- Bldg 2: Open Showroom, Private Restrooms, and Rear Workshop with 8'x8' Garage Door



Adam Shteir

Partner
602.769.0521
adam@citywidecre.com

Aimee Sanderson, CCIM

Sales & Leasing
480.678.0809
aimee@citywidecre.com

citywide
COMMERCIAL REAL ESTATE

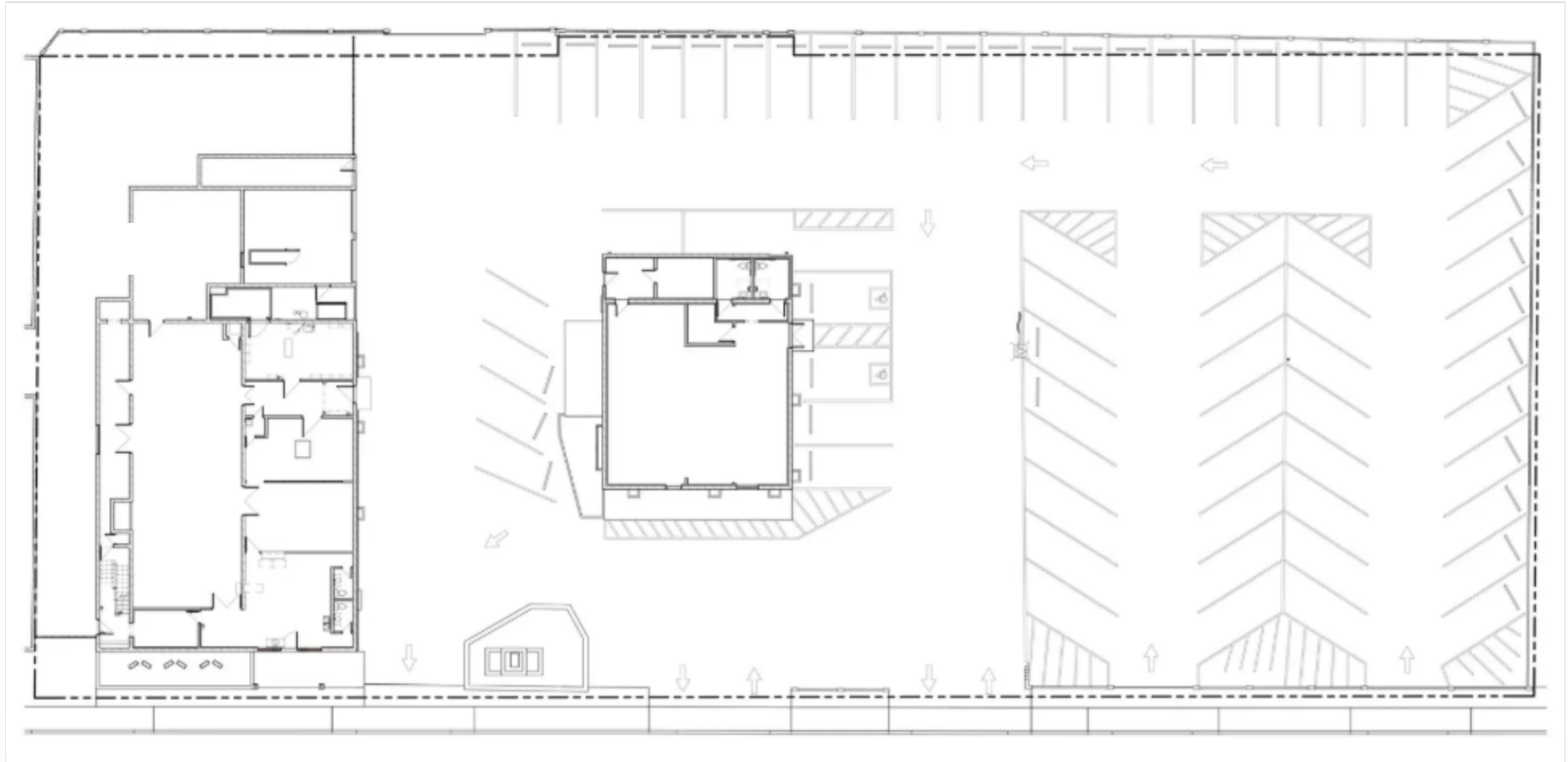
1645 East Missouri Avenue, Suite 230
Phoenix, Arizona 85016
602.313.1000 • citywidecre.com





SITE PLAN

4023-4033 N 19TH AVENUE
PHOENIX, ARIZONA 85015



Adam Shteir

Partner
602.769.0521
adam@citywidecre.com

Aimee Sanderson, CCIM

Sales & Leasing
480.678.0809
aimee@citywidecre.com

citywide
COMMERCIAL REAL ESTATE

1645 East Missouri Avenue, Suite 230
Phoenix, Arizona 85016
602.313.1000 • citywidecre.com