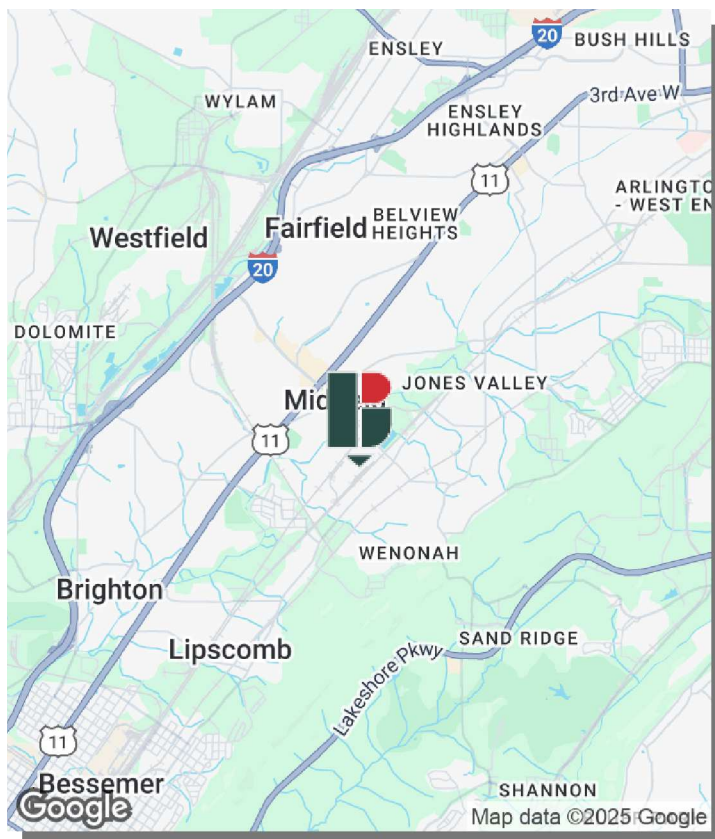




## 1523 MIDFIELD INDUSTRIAL BOULEVARD BIRMINGHAM, AL 35221

### PROPERTY FEATURES

- 123,750 SF on 11.92 acres
- 4k SF office space
- Open air warehouse
- Active +/- 900' Norfolk Southern rail spur to dock and yard
- Zoned I-2; Heavy Industrial Zoning
- 30' clear height & 38' at the center
- Fully paved, fenced and lit yard
- Power: 3-phase/480v/800amp
- Excellent in-place security system with 20 HD security cameras
- Fiber internet (Spectrum)
- Three structural sheds totaling 22,950 SF (excluded from square footage)



LEASE RATE:  
Call for Pricing

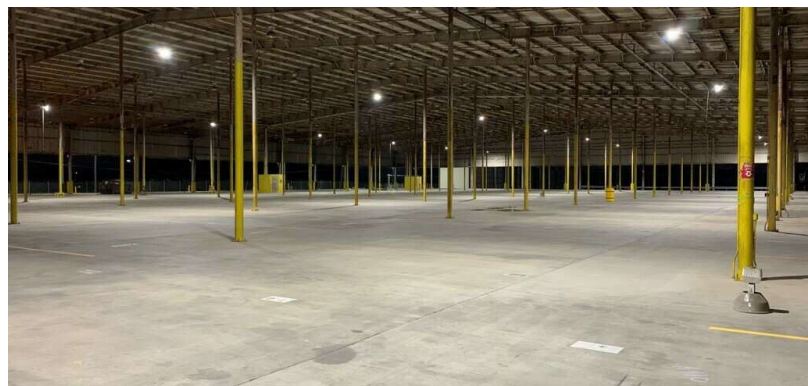
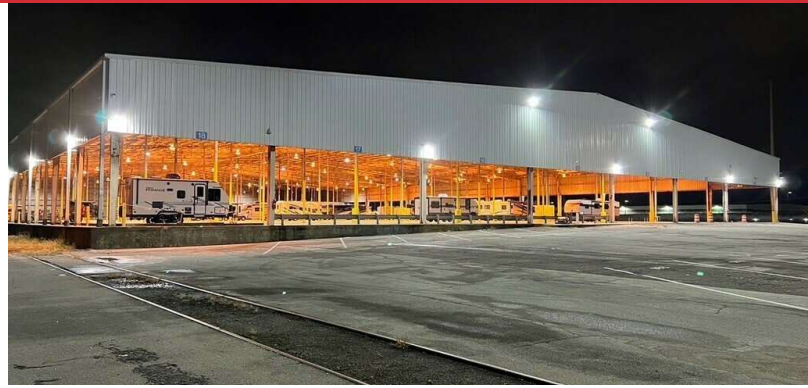
**Jake Bottcher**  
205.313.4380  
jbottcher@jhberry.com

**Edwin Moss, SIOR, CCIM**  
205.313.4379  
emoss@jhberry.com

**Sonny Potter**  
205.313.4367  
rspotter@jhberry.com



# RAIL SERVED WAREHOUSE WITH LARGE PAVED YARD



**Jake Bottcher**  
205.313.4380  
jbottcher@jhberry.com

**Edwin Moss, SIOR, CCIM**  
205.313.4379  
emoss@jhberry.com

**Sonny Potter**  
205.313.4367  
rspotter@jhberry.com