

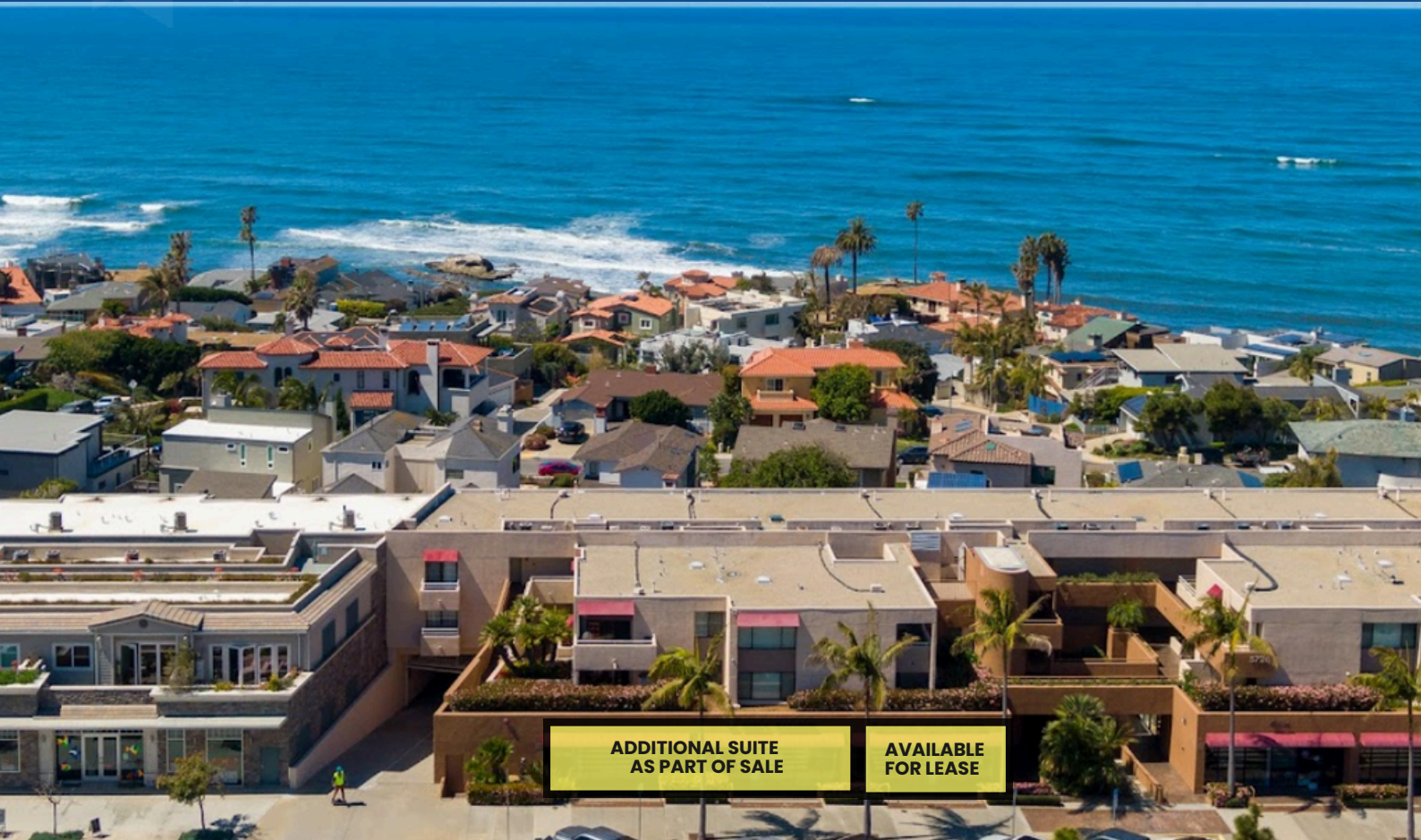
FOR LEASE OR SALE-OWNER/USER

5726 La Jolla Blvd.

La Jolla, CA 92037



CAPITAL GROWTH
PROPERTIES, INC.



DESCRIPTION OF AVAILABLE SPACE

- ✓ Street Front Retail space in the Heart of Birdrock.
- ✓ 3 private offices, conference room, open area, storage room, and kitchenette.
- ✓ Exposed ceilings.
- ✓ Cement flooring.
- ✓ 2 covered parking included plus free customer parking in rear.

Available Space For Lease

Suite	SF	Rate
103	1,848	\$ 3.15 <small>+NNN (\$1.26)</small>

OR

Available Space For Lease

Suite	SF	Asking Price
101/103	5,222	\$3,700,000.00

JILL MORTON

Senior Vice President
jmorton@cgpinc.com
858.729.9308
CA DRE Lic: 00868254

GREG WAGNER

Senior Vice President
gwagner@cgpinc.com
858.729.9306
CA DRE Lic: 01120775

FOR LEASE OR SALE-OWNER/USER

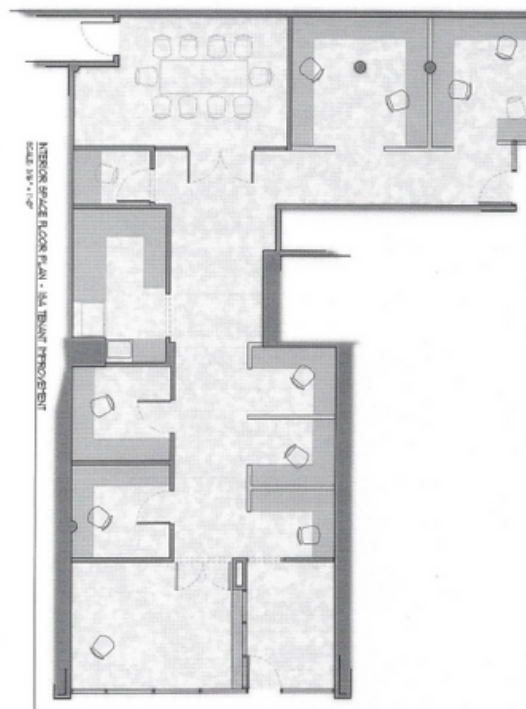
5726 La Jolla Blvd.

La Jolla, CA 92037



**CAPITAL GROWTH
PROPERTIES, INC.**

Floor plan



FOR LEASE OR SALE-OWNER/USER

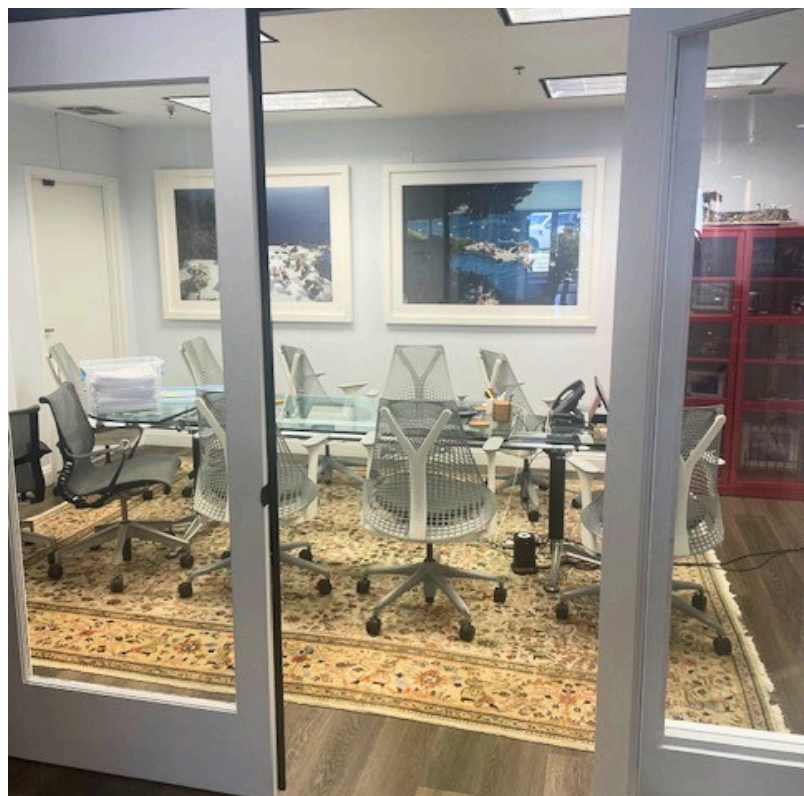
5726 La Jolla Blvd.

La Jolla, CA 92037



**CAPITAL GROWTH
PROPERTIES, INC.**

Suite 103



FOR LEASE OR SALE-OWNER/USER

5726 La Jolla Blvd.

La Jolla, CA 92037



**CAPITAL GROWTH
PROPERTIES, INC.**

Suite 103



FOR LEASE OR SALE-OWNER/USER

5726 La Jolla Blvd.

La Jolla, CA 92037



**CAPITAL GROWTH
PROPERTIES, INC.**



For more information, please contact:



GREG WAGNER

Senior Vice President

gwagner@cgpincre.com

858.729.9306

CA DRE Lic: 01120775



JILL MORTON

Senior Vice President

jmorton@cgpincre.com

619.955.2877

CA DRE Lic: 00868254

Capital Growth Properties, Inc.



1120 Silverado Street, Suite 200

La Jolla, CA 92037



858.729.9300



www.cgpincre.com



@cgpincre

www.cgpincre.com