

FOR LEASE: ON-CAMPUS OUTPATIENT MEDICAL SPACE



SCAN OR CLICK
FOR VIRTUAL TOUR

UAB St. Vincent's 805 Building (Orthosports Center)

6,215 – 9,698 RSF Available

805 Saint Vincent's Drive, Birmingham, AL 35205

Proudly owned & managed by

Healthpeak[®] | **DOC
LISTED
NYSE**

SCOTT DUNKLE, VICE PRESIDENT - LEASING
414.367.5556 | SDunkle@healthpeak.com



PROPERTY OVERVIEW

Located on the UAB St. Vincent's Birmingham campus, this property offers convenient covered skywalk connectors to the rest of the campus facilities. The property also features on-campus property management, a covered patient drop-off area, and a parking deck. On-site services include orthopedics and sports medicine, an internal medicine clinic, podiatry, and pediatrics.

Campus Setting	On-campus – UAB St. Vincent's Birmingham
-----------------------	--

Building Details	148,844 RSF Built in 2008 Six stories
-------------------------	---

Available	Ste G100: 9,698 RSF Ste 420: 6,215 RSF
------------------	---

Access	Easy access to and from US-31 and US-280 Covered skywalk access to the hospital campus
---------------	---

Parking	Parking deck
----------------	--------------

Proudly owned & managed by

Healthpeak® | DOC
LISTED
NYSE

SCOTT DUNKLE, VICE PRESIDENT - LEASING
414.367.5556 | SDunkle@healthpeak.com

ORTHOSPORTS CENTER

805 SAINT VINCENT'S DRIVE, BIRMINGHAM, AL 33205



AFFILIATED HOSPITAL

UAB St. Vincent's Birmingham is a 409-bed acute care hospital that offers a variety of care specialties, including a state-of-the-art robotics surgery program and the first Heart Valve Clinic in the state. In addition, the hospital provides a 24/7 emergency department, imaging, laboratory, and pharmacy. The hospital specializes in medical services, including oncology, cardiology, women's and children's services, orthopedics/sports medicine, neurology, community/corporate wellness services, and surgical services. UAB St. Vincent's Birmingham has a long history of recognition, including being named the "Best Hospital to Have a Baby," "Best Birthing Suites," "Favorite Hospital," and is listed on the Most Wired for Hospitals and Health Networks rankings.

AREA OVERVIEW

Birmingham, Alabama, is known as the "Dinner Table of the South," featuring award-winning barbecue and a blend of international influences. The Birmingham metropolitan area is consistently rated as one of the United States' best places to work and earn a living based on the area's competitive salary rates and relatively low living expenses. Birmingham is home to the University of Alabama at Birmingham, ranking fifteenth in federally-funded research among public universities. It is also home to three private institutions: Samford University, Birmingham-Southern College, and Miles College.

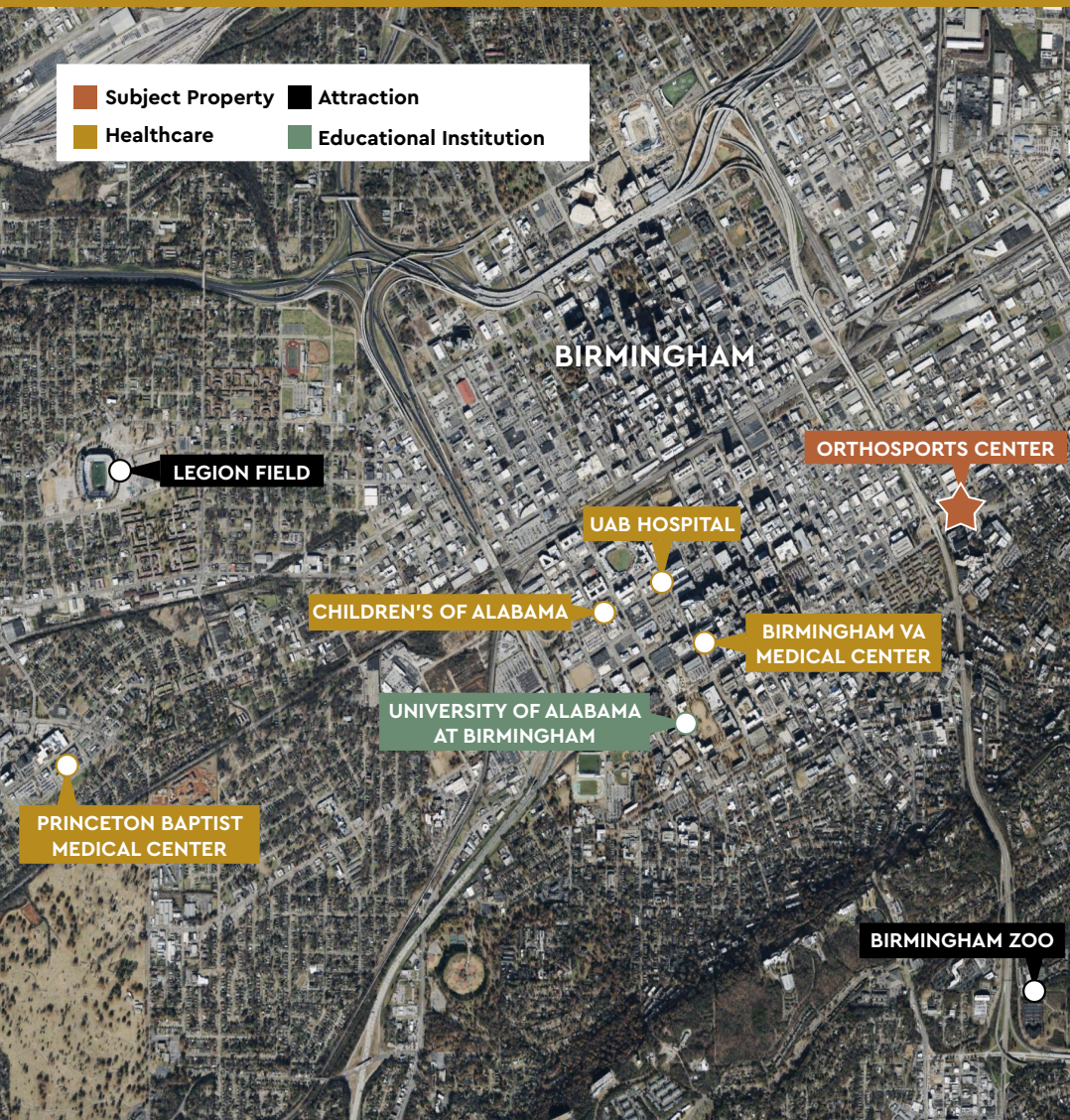
Proudly owned & managed by

Healthpeak® | DOC LISTED NYSE

SCOTT DUNKLE, VICE PRESIDENT - LEASING
414.367.5556 | SDunkle@healthpeak.com

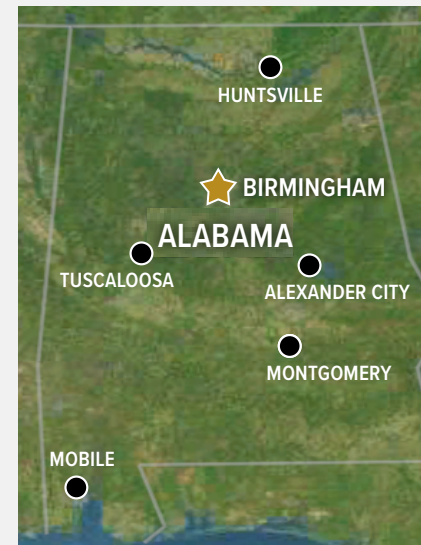
ORTHOSPORTS CENTER

805 SAINT VINCENT'S DRIVE, BIRMINGHAM, AL 53205



DEMOGRAPHICS

Distance	Total Population	Median Household Income
1-Mile	14,788	\$53,666
3-Miles	82,150	\$56,640
5-Miles	175,137	\$57,072



Area Healthcare

Alexander City

- Russell Medical Center

Huntsville

- Huntsville Hospital
- Crestwood Medical Center

Mobile

- USA Health Children's & Women's Hospital
- Infirmary Health
- Providence Memorial Hospital
- Springhill Medical Center

Montgomery

- Jackson Hospital
- VA Medical Center
- Baptist Medical Center South

Tuscaloosa

- DCH Regional Medical Center
- VA Medical Center

Proudly owned & managed by

Healthpeak® | DOC LISTED NYSE

SCOTT DUNKLE, VICE PRESIDENT - LEASING
414.367.5556 | SDunkle@healthpeak.com



9,698 RSF



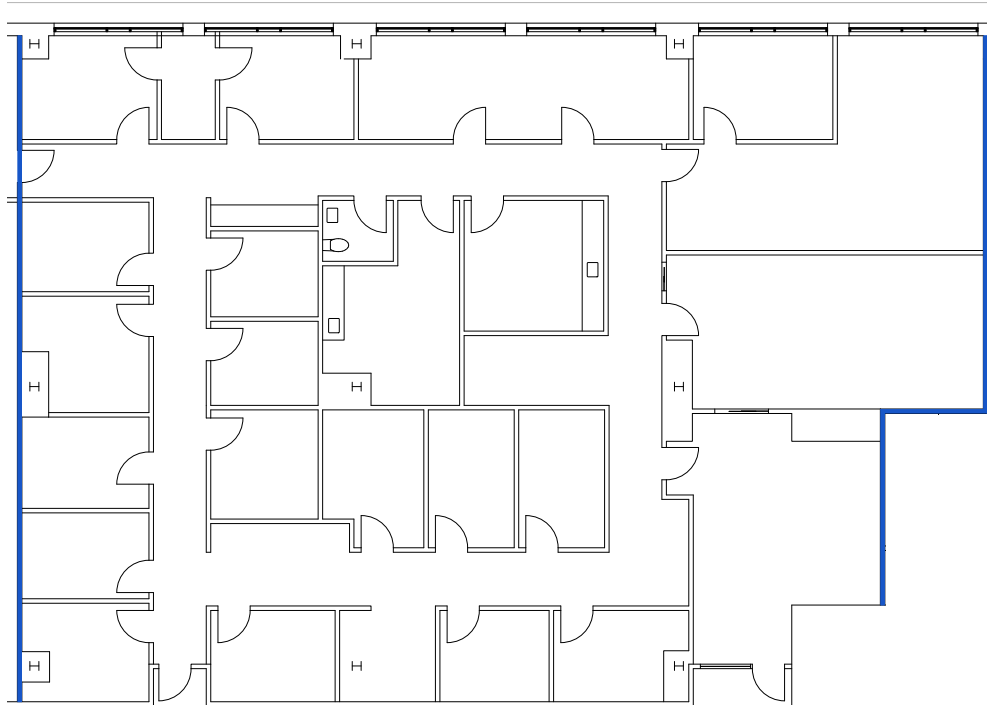
SCAN OR
CLICK FOR
VIRTUAL TOUR

Healthpeak® | **DOC**
LISTED
NYSE

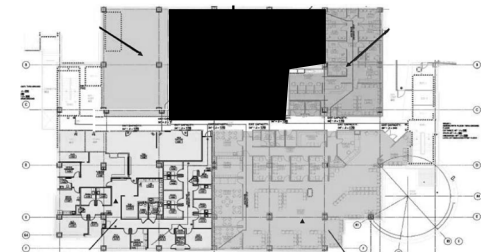
SCOTT DUNKLE, VICE PRESIDENT - LEASING
414.367.5556 | SDunkle@healthpeak.com

FOURTH FLOOR

Suite 420
6,215 RSF



Key Plan



Proudly owned & managed by

Healthpeak® | **DOC
LISTED
NYSE**

SCOTT DUNKLE, VICE PRESIDENT - LEASING
414.367.5556 | SDunkle@healthpeak.com

Healthpeak® | **DOC**
LISTED
NYSE

SCOTT DUNKLE
Direct 414.367.5556
Mobile 407.620.1496
SDunkle@healthpeak.com

