

1222

ABBOT KINNEY BOULEVARD





1222 ABBOT KINNEY BOULEVARD

ADDRESS

1222 Abbot Kinney Blvd.
Venice, CA 90291

SIZE

Ground: 1,600SF
Patio: 800 SF
Total: 2,400 SF

FRONTAGE

30 FT.

PRICE

Upon Request

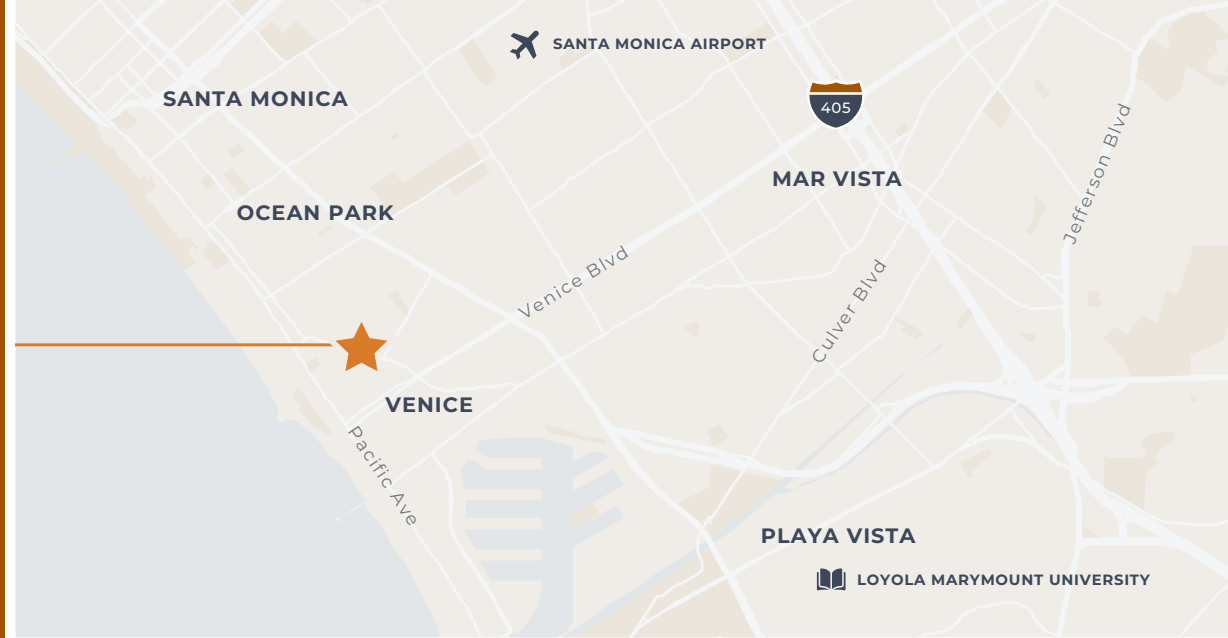
AVAILABILITY

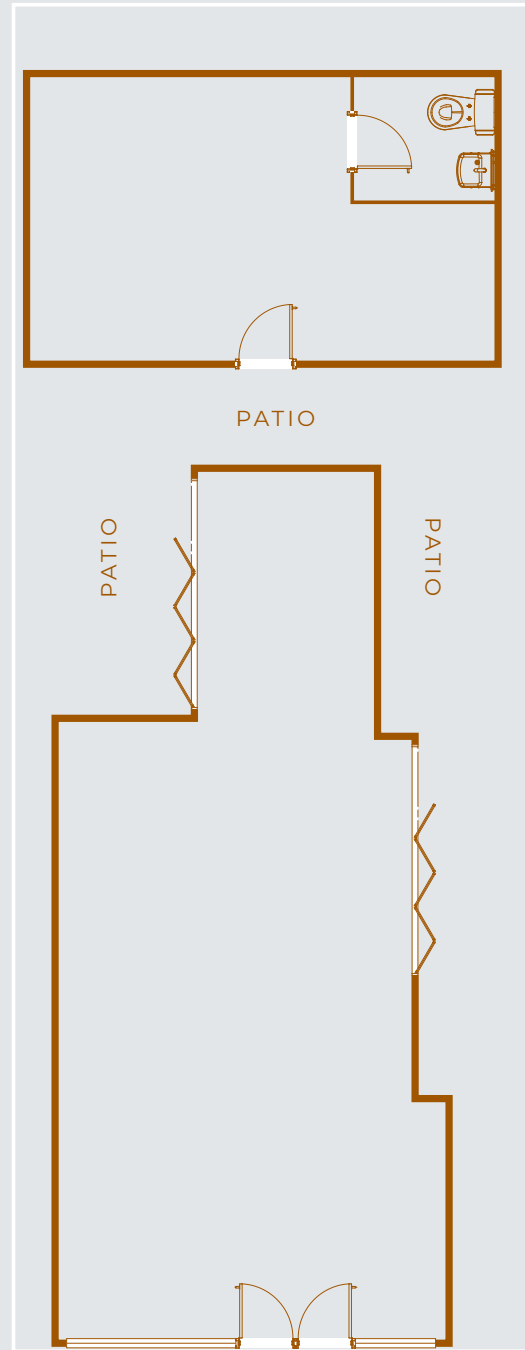
Immediately

PROPERTY HIGHLIGHTS

- Free-standing building
- Modern indoor-outdoor design
- Two large, private patios with bi-fold sliding patio doors
- Clean interior with polished concrete floors, high ceilings with exposed wooden beams, and expansive window line
- Abundance of natural lighting throughout
- Located next door to Aviator Nation
- Low NNNs

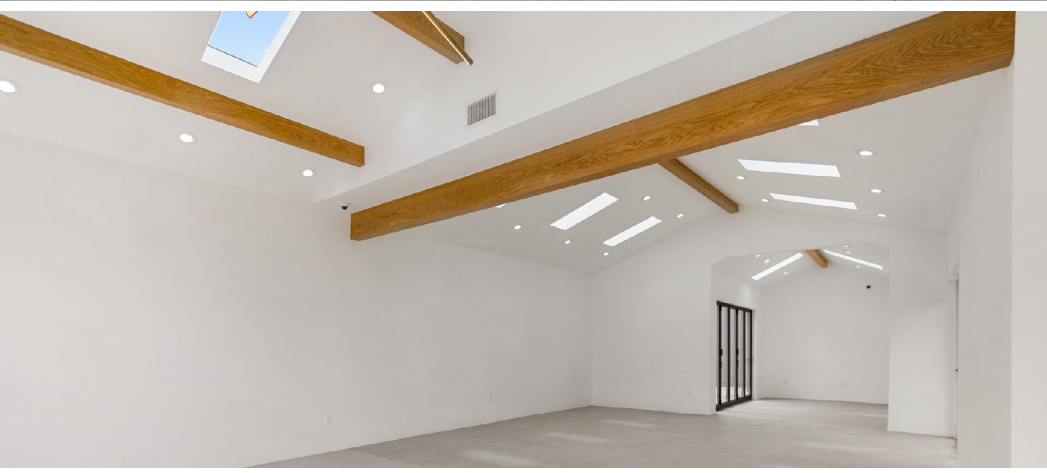
1222 ABBOT KINNEY BOULEVARD





FLOOR PLAN





GABRIEL RABBIANIAN

213-949-1627

gabrielrabbanian@gmail.com







GABRIEL RABBIANIAN

213-949-1627

gabrielrabbianian@gmail.com



1222 | ABBOT KINNEY BOULEVARD

- EVERLANE
- BLUE BOTTLE COFFEE
- AWAY
- KEVIN
- INDUSTRY OF ALL NATIONS
- LCD
- AHLEM EYEWEAR
- FORMER BOCA DE ACUA
- FORMER LA TOSTADERIA
- MADEWELL
- THE BUTCHER'S DAUGHTER
- DEN MOTHER
- GOODIES
- KEETSA
- FLANNEL
- COOKMAN
- MC2 SAINT BARTH
- BURNING TORCH
- GREENLEAF
- VARDACEN
- MTN OFFICES
- HAMILTON PRESS GALLERY
- IRO
- PRINCESSA
- VELVET BY GRAHAM & SPENCER
- JOHN FLUEVOG
- ART UNIFIED
- ILLESTEVA
- INTELLIGENTSIA
- ASA KAFTANS
- ALLBIRDS
- GUILD
- CHRISTY DAWN
- BEAUVILLE DAWN
- STABLE GLASS DESIGNS
- ADIDAS ROAD CAPITAL
- FOR LEASE
- VINCE ORIGINALS
- VINCE (WOMEN)
- VINCE (MEN)
- SALT & STRAW
- CHA CHA MATCHA
- KOIO / BURRO KIDS
- ABBOT'S PIZZA KIDS
- BURRO BY FIREFLY
- PLAYLIST PUSH
- CLASSIC TOUCH TATTOO PARLOUR
- GORJARA
- SAJE
- DOSIST
- GJELINA
- NATI
- UNDER CONSTRUCTION
- ZADIG & VOLTAIRE
- BOMBSHELL SPORTSWEAR
- THE BRIG
- FRINGE HAIR SALON
- OFFICES
- OWL VENICE
- ACUTONIX
- JAMES PERSE
- THE STRONGHOLD
- SHINOLA DETROIT
- THE STRONGHOLD
- NOVOGRATZ
- THE TASTING KITCHEN
- WABI-SABI SUSHI
- INKERMAN
- PRESSED JUICERY
- ALFRED COFFEE
- LEMONADE
- ZINQUE
- HALTON PARDEE + PARTNERS
- WEST COAST VIBES
- PICCOLO RISTORANTE
- AK STUDIOS
- OFFICE
- ALEXANDER WAGNER
- LAVISH TAN
- BUCK MASON
- FREE PEOPLE
- GROW VENICE
- OFFICE
- ON RUNNING
- WARBY PARKER
- RAY BAN
- WE DO
- TIMBUK2
- BEAUTY COUNTER
- NADAAM
- KREATION
- LIQUOR MARKET
- MADWELL MEN
- RUT
- SKYLARK
- ANANDA
- AYR
- RESIDENTIAL / OFFICE SPACE
- TOMS
- SCOTCH & SODA
- FAHERTY
- FARM RIO
- OFFICE BUILDING
- HUSET
- THE MAC STUDIO
- ROOSTERFISH
- THAT'S COOL
- MEDMEN
- AVIATOR NATION
- BUCK PALMER
- MONKS MEDIA
- SMITH BUILD GROUP
- BIRKENSTOCK
- COUTULA
- SWEETFN
- MARINE LAYER
- COFFEE & DONUTS
- CUYANA
- LE LABO
- SUIT SUPPLY
- DR. MARTENS
- STRANGE INVISIBLE PERFUMES
- RAG & BONE
- MIANSAI
- SALT
- BIRDIES
- BAZAR
- HEIST GALLERY

1222

ABBOT KINNEY BOULEVARD

