

VESPAIO

RETAIL, OFFICE, AND MEDICAL SPACE FOR LEASE

DOWNTOWN SAN JOSE TRANSIT MIXED-USE | 130 STOCKTON AVE

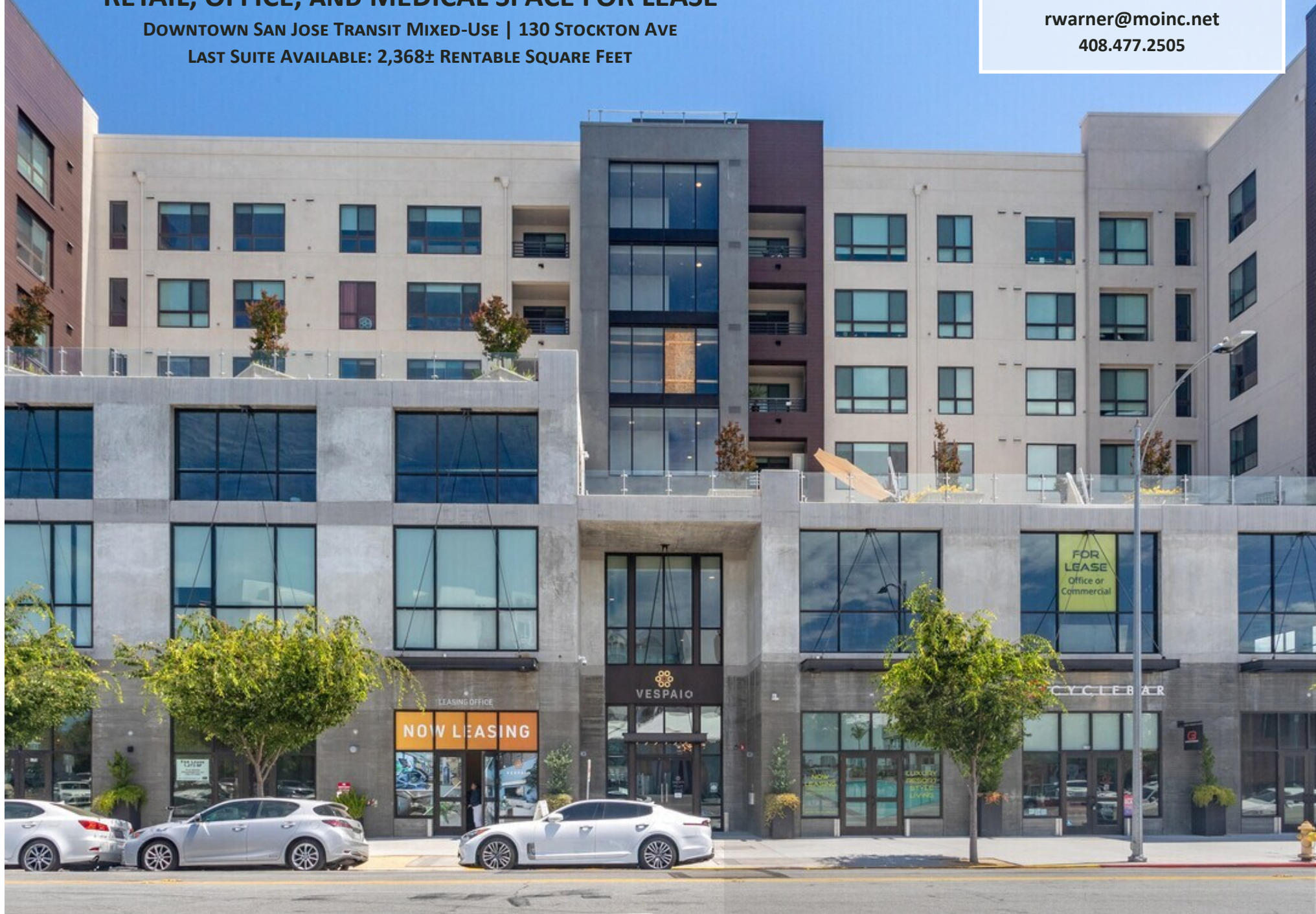
LAST SUITE AVAILABLE: 2,368± RENTABLE SQUARE FEET

RYAN WARNER

Lic. #01397580

rwarner@moinc.net

408.477.2505

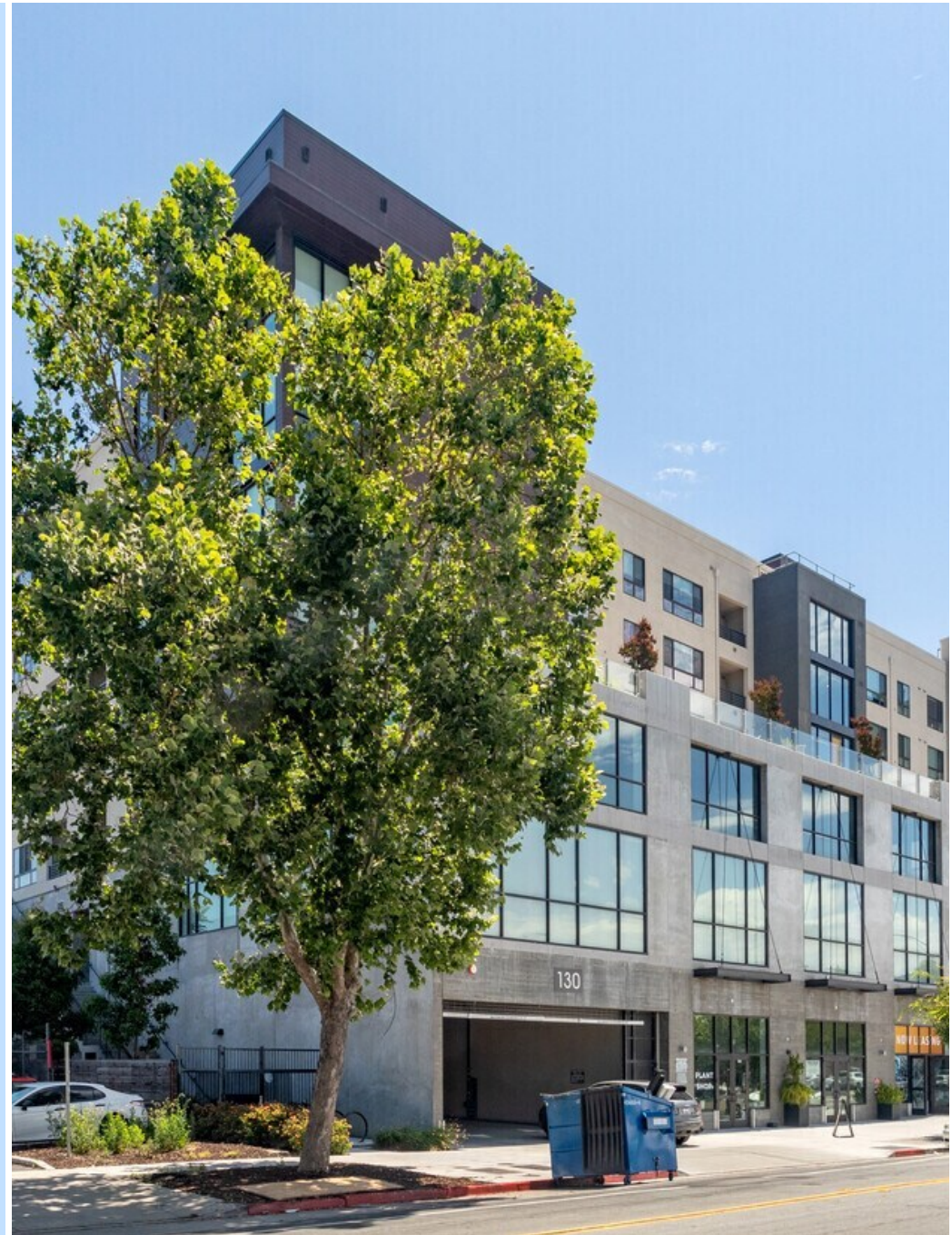


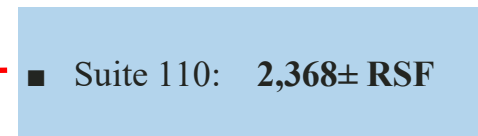
EXTERIOR PHOTOS



PROPERTY OVERVIEW

- IDEAL FOR RETAIL, OFFICE, AND MEDICAL
- RESTAURANT READY IMPROVEMENTS
- CYCLE BAR AND YOGASIX - NOW OPEN
- **WAXING THE CITY & KASAMA CÀ PHÊ - COMING SOON!**
- 162 LUXURY APARTMENTS
- CLOSE TO DIRIDON STATION, WHOLE FOODS, SAP CENTER & DOZENS OF RESTAURANTS
- EASY ACCESS FROM HIGHWAY 87 & I-280
- ABUNDANT ON-SITE PARKING & ADJACENT PARKING
- ON-SITE MANAGEMENT
- JUST AROUND THE CORNER FROM GOOGLE'S PROPOSED TRANSIT VILLAGE, OFFICIALLY KNOWN AS "DOWNTOWN WEST,"
- STRONG SURROUNDING DEMOS | DAYTIME POPULATION OF 180K EMPLOYEES WITHIN 3 MI.





SPACE HIGHLIGHTS

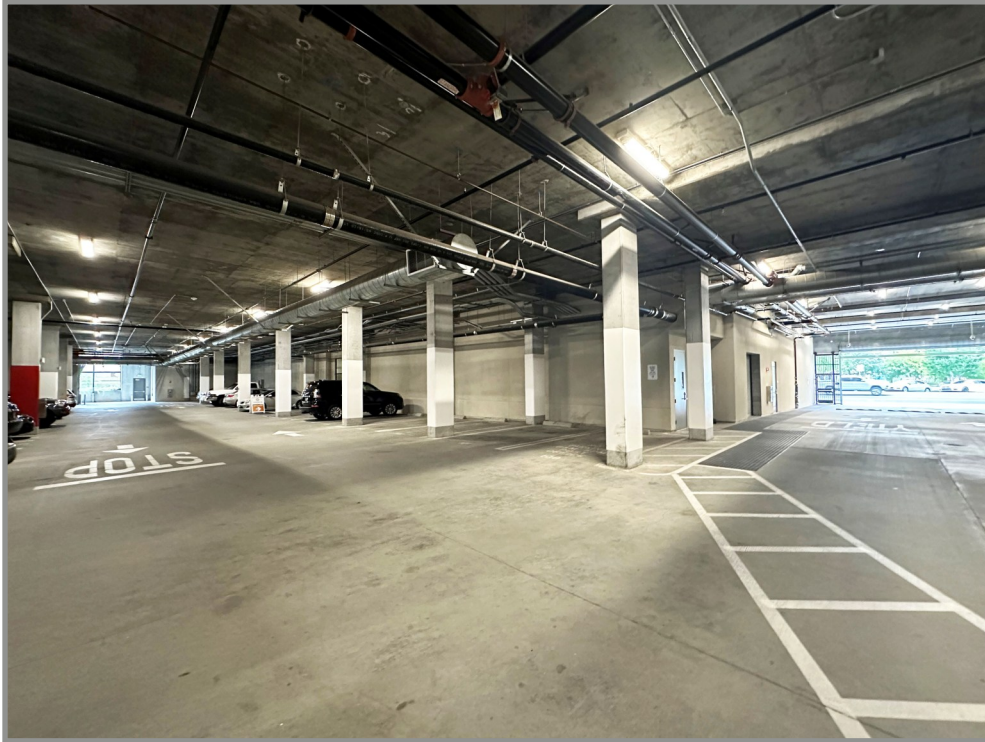
- **HIGH VISIBILITY RETAIL ACROSS FROM WHOLE FOODS MARKET**
- **ENDCAP ** 110 - 2,368± RSF**
- **GENEROUS TI ALLOWANCE AVAILABLE**
- **EXPOSED CONCRETE CEILINGS W/HEIGHTS TO 17 Ft**
- **TREMENDOUS NATURAL LIGHT**
- **PROMINENT BUILDING SIGNAGE AVAILABLE**
- **STRONG CO-TENANCY**
- **CONTACT AGENT FOR PRICING**



Vespaio is located in Downtown San Jose, just steps from Diridon Station, California's premier transit hub. It serves Caltrain, VTA light rail, Amtrak, and future BART and high-speed rail. The project is situated across from Whole Foods at the crossroads of the tree lined streets of the historic Alameda neighborhood and San Jose's vibrant Downtown core.



PARKING GARAGE – MULTIPLE LEVELS



POINTS OF INTEREST



2025 SUMMARY	1-MILE	3-MILE	5-MILE
Population	30,437	245,523	681,288
Average HH Income	\$184,028	\$174,303	\$186,644
Businesses	3,334	15,368	31,684
Employees	36,634	185,750	365,565



VESPAIO

130 Stockton Ave, San Jose



Meacham/Oppenheimer, Inc.
8 N. San Pedro St., Suite 300
San Jose, California 95110
Tel: 408.378.5900
www.moinc.net

RYAN WARNER
Lic. #01397580
rwarner@moinc.net
408.477.2505