



New England  
Retail Properties, Inc.

**NOW AVAILABLE FOR SALE OR LEASE**



**CONTACT**

D: 860.529.9000

[info@newenglandretail.com](mailto:info@newenglandretail.com)

[www.newenglandretail.com](http://www.newenglandretail.com)

***±2,400 SF Freestanding Building***

12 Seneca Road, Bloomfield, CT 06002

# 12 SENECA ROAD



## PROPERTY DETAILS | For Sale or Lease

<b>First Floor Size</b>	2,416 SF
<b>Finished Lower Level</b>	1,450 SF
<b>Lot Size</b>	0.74 Acres
<b>Zone</b>	BCD
<b>Heating Fuel/Type</b>	Gas/Forced Air
<b>Parking</b>	42 Spaces
<b>Use Type</b>	Retail, medical, salon/spa, or restaurant

<b>Taxes (annually)</b>	\$11,498.11
<b>Lease Rate</b>	Upon Request
<b>Sale Price</b>	\$650,000

**NO CO-BROKE ON A SALE**

### HIGHLIGHTS

- Located in the heart of Bloomfield Town Center
- Excellent visibility from Seneca Road
- Ample on-site parking
- Easy highway access; 3.6 miles, 8 minutes to I-91
- Neighboring tenants include, Carbone's Kitchen, CVS, Dunkin', Geissler's Supermarket, Republic Gastropub and many more.



### HIGHWAY ACCESS

Approximately 3.6 miles,  
8 minutes to I-91



### DEMOGRAPHICS

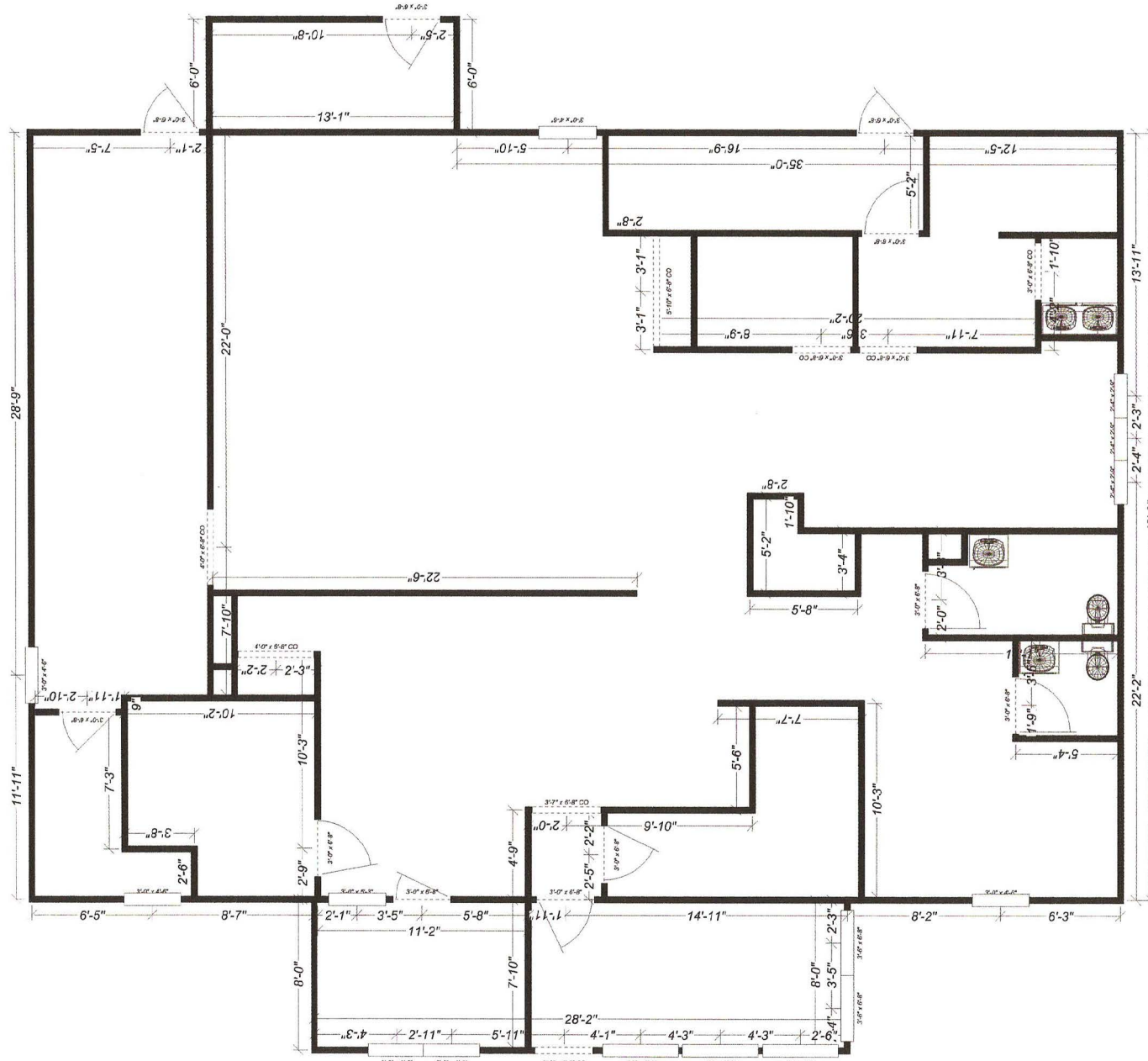
Estimated population of  
over 139,000 within 5 miles



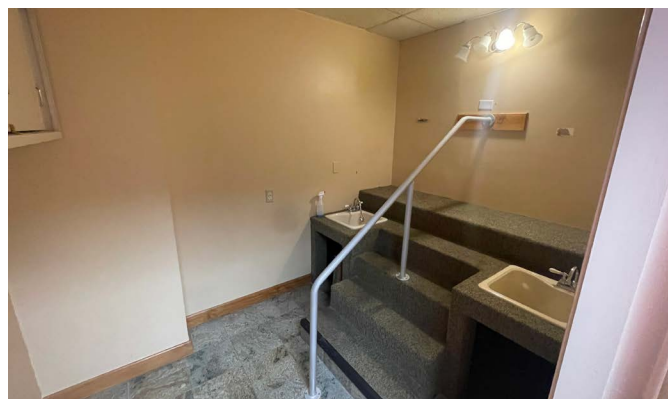
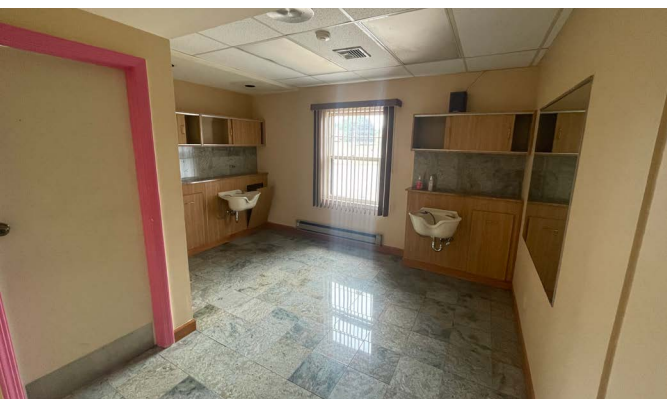
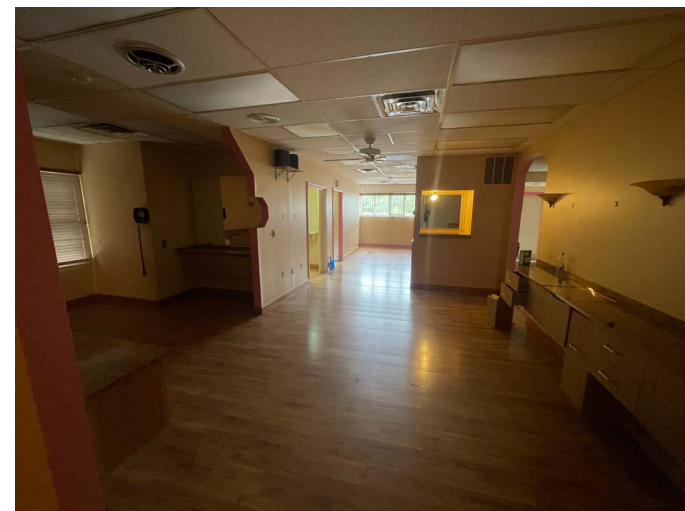
### TOWN CENTER LOCATION

Conveniently located in the heart  
of Bloomfield Town Center

# FLOOR PLAN



FRONT OF BUILDING





EST. 2017  
**HEIRLOOM FLATS**  
**215 LUXURY APARTMENT UNITS**

**tellus GREEN APARTMENTS**  
**42 LUXURY APARTMENT UNITS**

**tellus BLOOM APARTMENTS**  
**150 LUXURY APARTMENT UNITS**

**FRESENIUS KIDNEY CARE**

**Domino's**

**Hartford HealthCare Medical Group**

**SILAS DEANE PAWN**

**TOTAL HEALTH CLUB**  
**Ocean State JOB LOT**

**THE PUBLIC**  
 A gastro-pub eat & drink in. GREAT BEER • BETTER FOOD

**Walgreens**

**WELLS FARGO**

**BANK OF AMERICA**  
**Shell**

**Carbone's KITCHEN**  
 Bloomfield FAMILY RESTAURANT  
 Dutch Point CREDIT UNION  
**H&R BLOCK**  
*Arthur Murray*

**CELEBRATING SINCE 1923**  
**GEISSLER'S SUPERMARKET**  
 100 YEARS

**JOHN BOYLE**  
*Decorating Centers*

**Windsor Federal Bank**

**12 Seneca Road**

**ELIZABETH'S**  
**LIBERTY BANK**

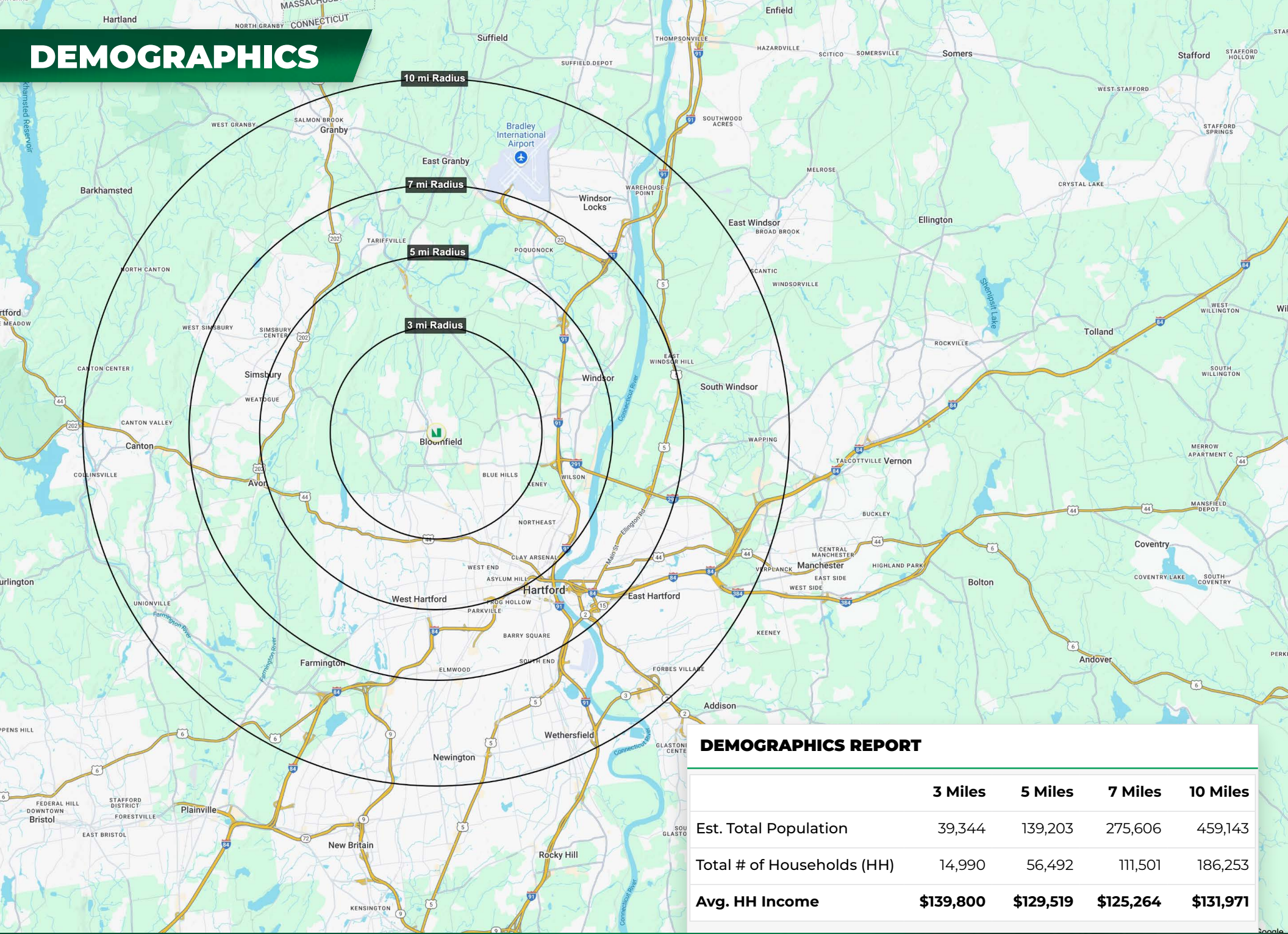
**DUNKIN'**

# MARKET AERIAL



NO WARRANTY OR REPRESENTATION, EXPRESSED OR IMPLIED, IS MADE AS TO THE ACCURACY OF THE INFORMATION CONTAINED HEREIN, AND SAME IS SUBMITTED SUBJECT TO ERRORS, CHANGE OR PRICE, RENTAL OR OTHER CONDITIONS, WITHDRAWAL WITHOUT NOTICE, AND TO ANY SPECIAL LISTING CONDITIONS IMPOSED BY OUR PRINCIPALS.

# DEMOGRAPHICS



## DEMOGRAPHICS REPORT

	3 Miles	5 Miles	7 Miles	10 Miles
Est. Total Population	39,344	139,203	275,606	459,143
Total # of Households (HH)	14,990	56,492	111,501	186,253
Avg. HH Income	\$139,800	\$129,519	\$125,264	\$131,971





# CONTACT

Ryan Mendez  
D: 860.529.9000 X 106 | C: 860.681.6634  
E: rmendez@newenglandretail.com

Conor Langan  
D: 860.529.9000 X 113 | C: 860.324.1329  
E: clangan@newenglandretail.com

Visit us at: [www.newenglandretail.com](http://www.newenglandretail.com)



NO WARRANTY OR REPRESENTATION, EXPRESSED OR IMPLIED, IS MADE AS TO THE ACCURACY OF THE INFORMATION CONTAINED HEREIN, AND SAME IS SUBMITTED SUBJECT TO ERRORS, CHANGE OR PRICE, RENTAL OR OTHER CONDITIONS, WITHDRAWAL WITHOUT NOTICE, AND TO ANY SPECIAL LISTING CONDITIONS IMPOSED BY OUR PRINCIPALS.