

350
N. CLARK ST.



HISTORIC CHARACTER, CONTEMPORARY EXPERIENCE

- Located in the bustling River North, Chicago's premier 24/7, live-work-play neighborhood
- 8-story, 110,000 SF office building
- Beautiful 6-story center atrium, allowing for an abundance of natural light in each office space
- Unobstructed views to the north, south, and east
- Myriad retail amenities including Nonnina (full service restaurant/bar), Protein Bar (fast-casual dining), Café Umbria (artisanal coffee), and Bluemercury
- Executive parking garage, plus onsite hand car wash
- Highly accessible location via public transportation, bike sharing, and I-90/94 expressway
- Owner/management on-site



CONTACT: Brian Chernet
bchernett@friedmanproperties.com
(312) 644-1100

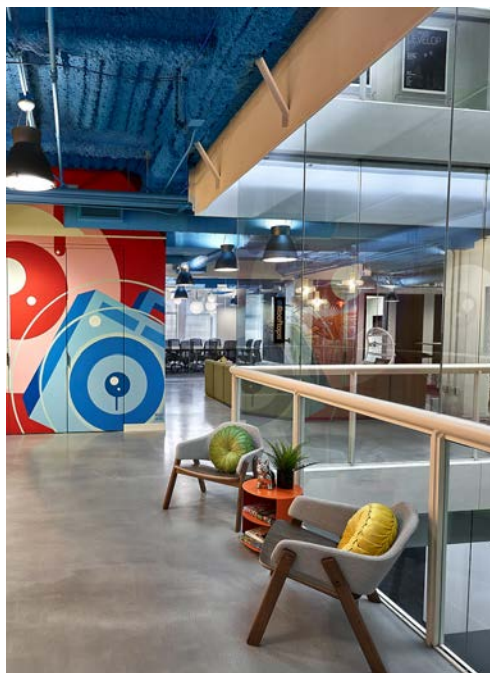
350
N. CLARK ST.



350
N. CLARK ST.

JOIN 9ROOFTOPS

RECOGNIZED AS ONE OF CRAIN'S
COOLEST OFFICES IN CHICAGO 2023!





FRIEDMAN
PROPERTIES

350
N. CLARK ST.

AVAILABLE SPACES

350
N. CLARK ST.

7/8/9 PENTHOUSE

70
WORKSTATIONS

13
OFFICES

5
CONFERENCE
ROOMS

1
KITCHEN



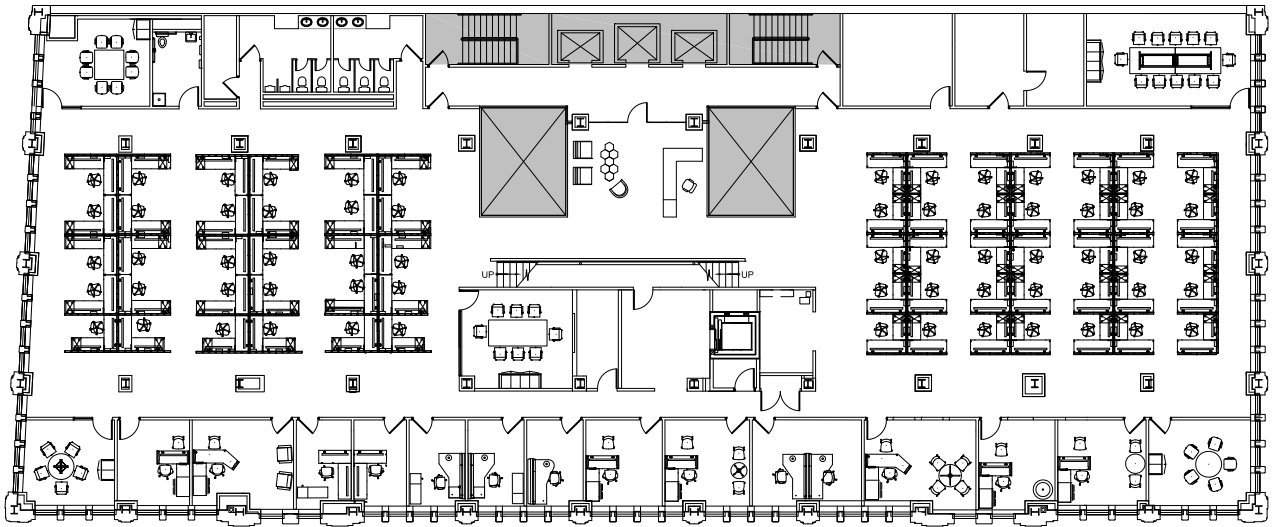
350
N. CLARK ST.

7/8/9 PENTHOUSE



350
N. CLARK ST.

PENTHOUSE - 7TH FLOOR
15,535 RSF



Not to Scale
Note: Subject premises is unshaded

All furniture (including workstations)
shown is for illustrative purposes only.

Plans are for preliminary design purposes.
Friedman Properties, Ltd. advises field
verification of existing conditions and
dimensions prior to use.

06/27/2023

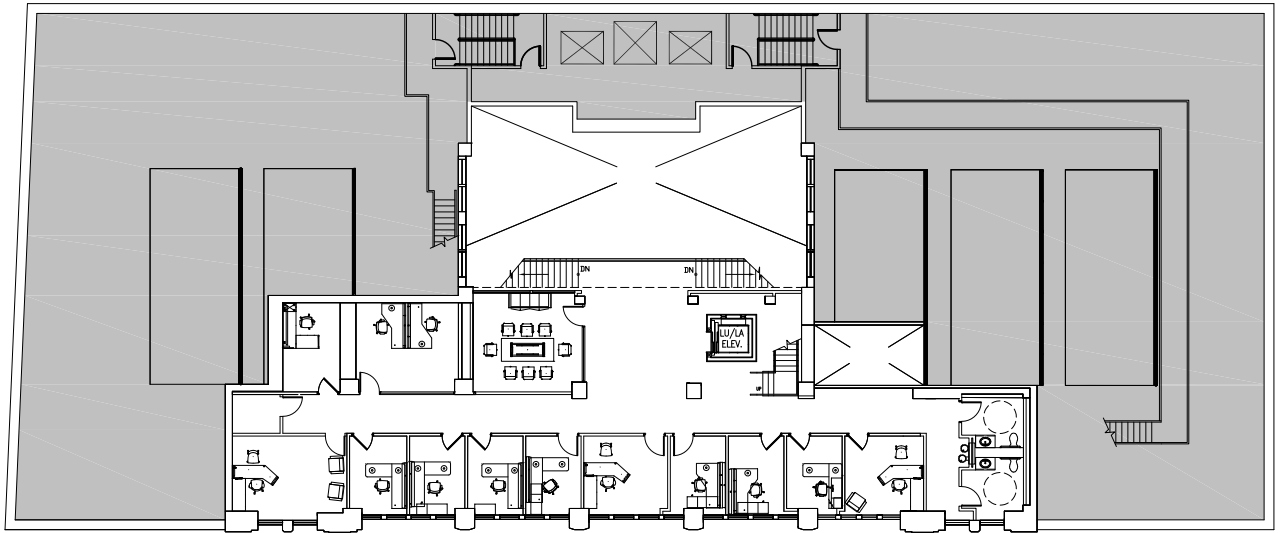


CONTACT: Brian Chernett
bchernett@friedmanproperties.com | (312) 644-1100

350
N. CLARK ST.

MEZZANINE - 7TH FLOOR

4,514 RSF



Not to Scale
Note: Subject premises is unshaded

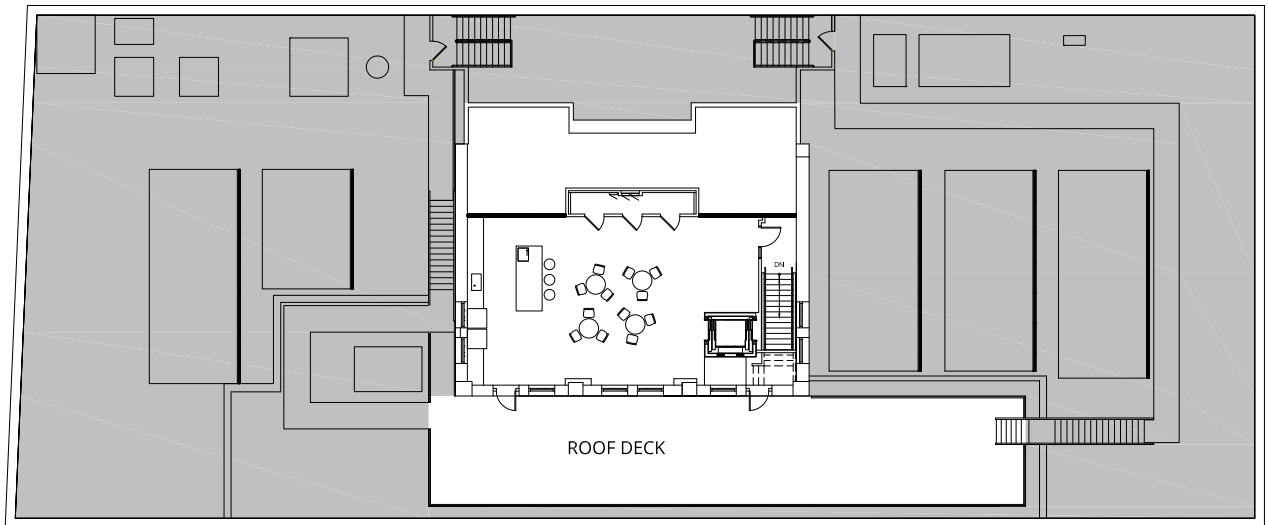
All furniture (including workstations)
shown is for illustrative purposes only.

Plans are for preliminary design purposes.
Friedman Properties Ltd. advises field
verification of existing conditions and
dimensions prior to use.

06/27/2023

350
N. CLARK ST.

PENTHOUSE
1,483 RSF



Not to Scale
Note: Subject premises is unshaded

All furniture (including workstations)
shown is for illustrative purposes only.

Plans are for preliminary design purposes.
Friedman Properties, Ltd. advises field
verification of existing conditions and
dimensions prior to use.

06/27/2023

350
N. CLARK ST.

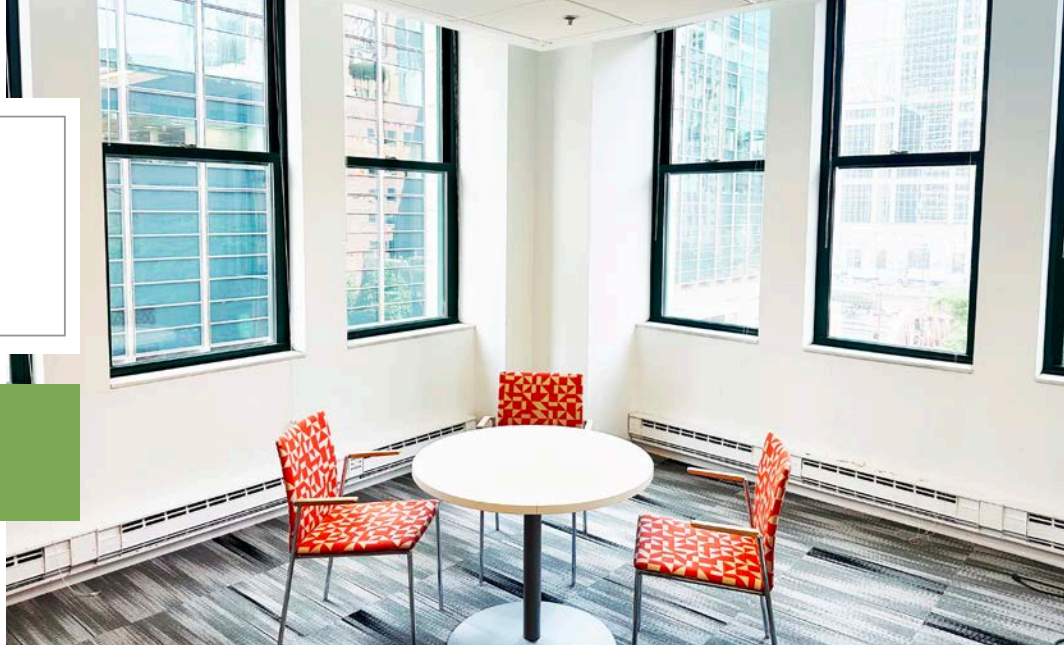
SUITE 550

38
WORKSTATIONS

3
OFFICES

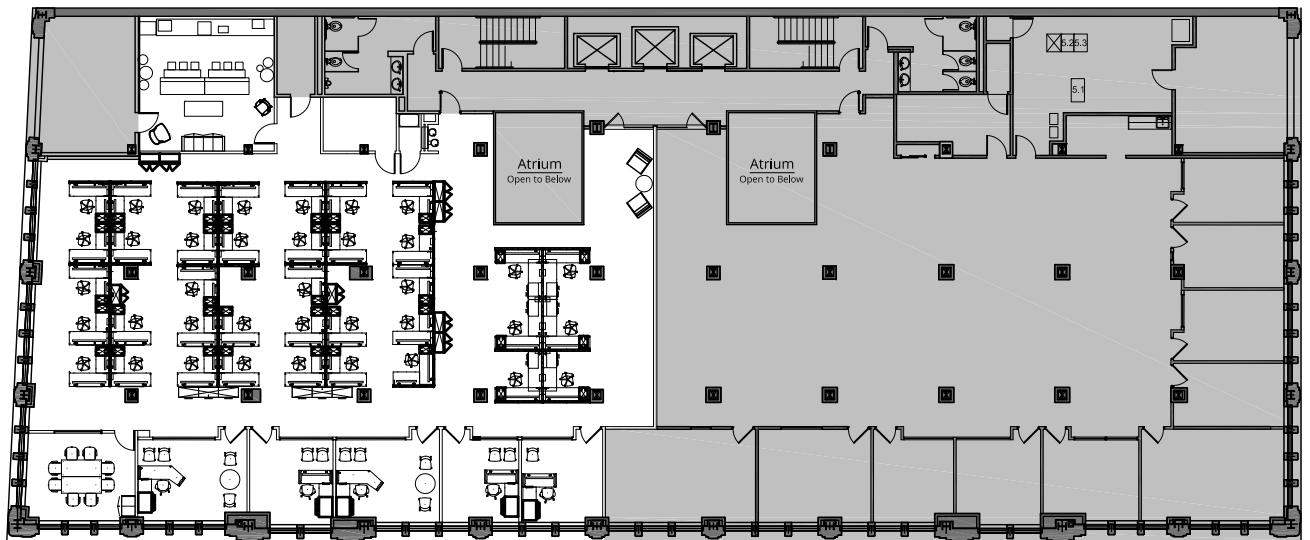
3
CONFERENCE
ROOMS

1
KITCHEN /
LOUNGE



350
N. CLARK ST.

SUITE 550
7,915 RSF



Note: Subject premises is unshaded

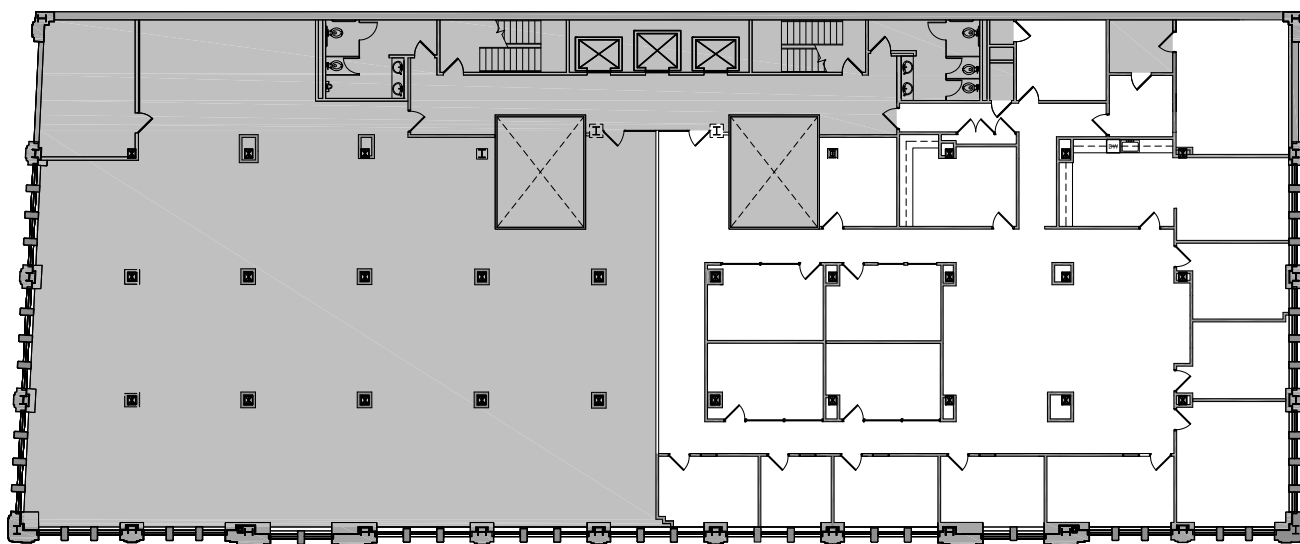
All furniture (including workstations)
shown is for illustrative purposes only.

Plans are for preliminary design purposes.
Friedman Properties, Ltd. advises field
verification of existing conditions and
dimensions prior to use.

08/16/2019

350
N. CLARK ST.

SUITE 300
7,858 RSF



Not to Scale
Note: Subject premises is unshaded

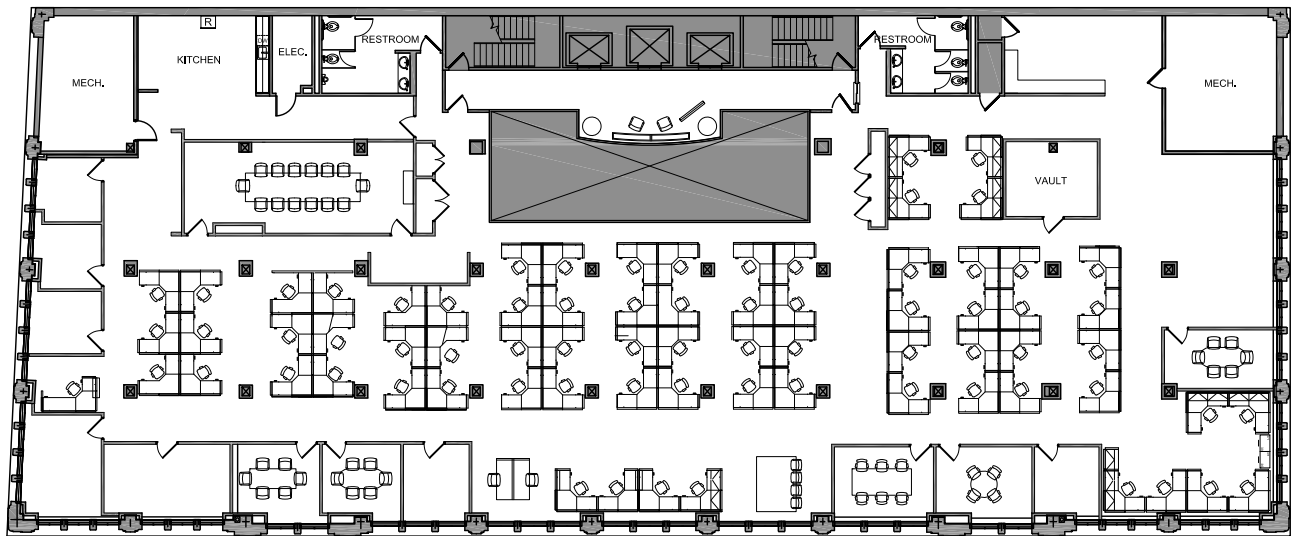
All furniture (including workstations)
shown is for illustrative purposes only.

Plans are for preliminary design purposes.
Friedman Properties, Ltd. advises field
verification of existing conditions and
dimensions prior to use.

06/09/2022

350
N. CLARK ST.

SUITE 200
15,055 RSF



Note: Subject premises is unshaded

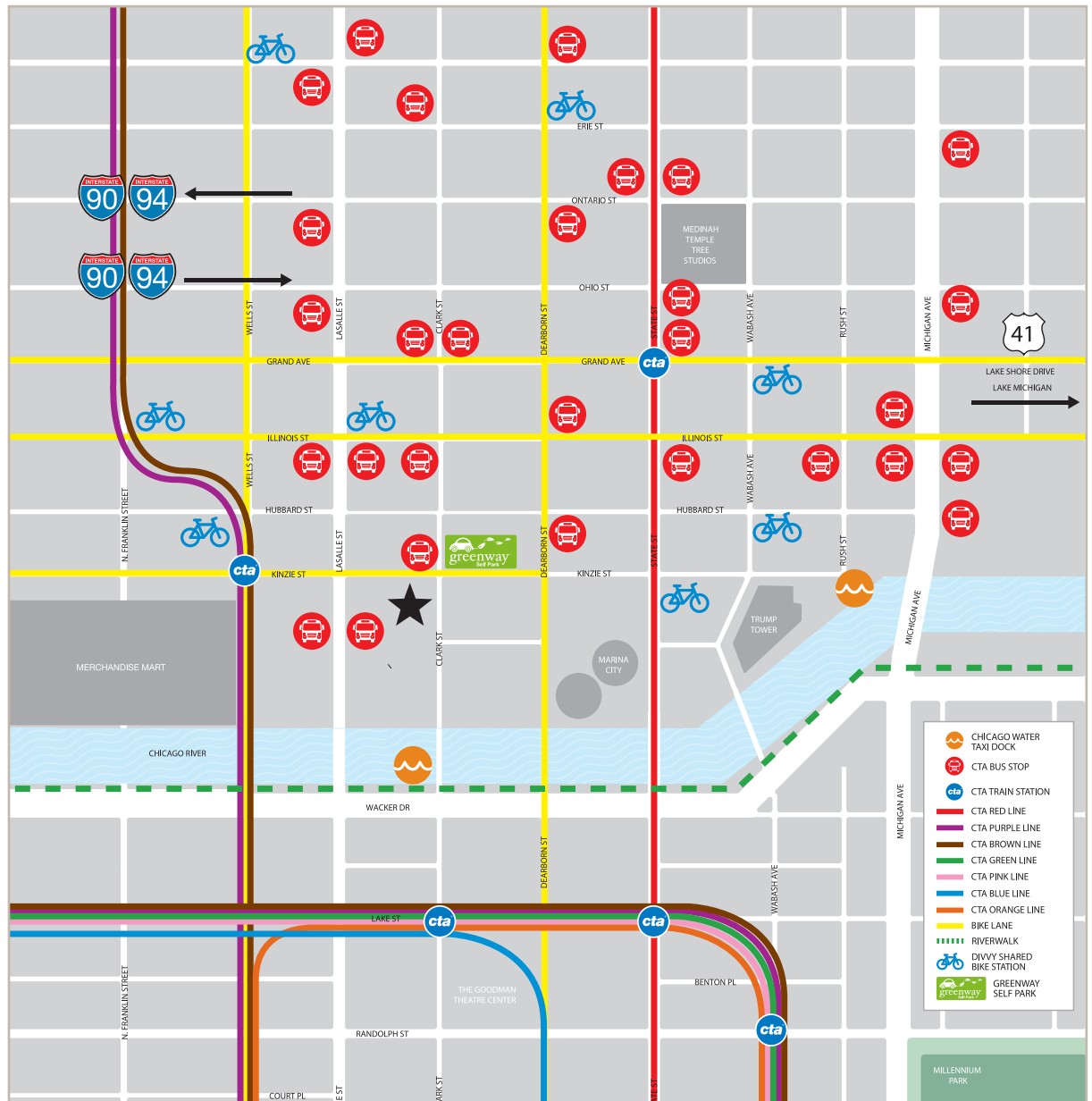
All furniture (including workstations)
shown is for illustrative purposes only.

Plans are for preliminary design purposes.
Friedman Properties, Ltd. advises field
verification of existing conditions and
dimensions prior to use.

11/30/2021

350 N. CLARK ST.

RIVER NORTH TRANSIT



WALK SCORE

98

TRANSIT SCORE

100

BIKE SCORE

88

350 N. CLARK ST.

RIVER NORTH HIGHLIGHTS

