

VALLEY GROVE I

OFFICE SUBLEASE



MOUNTAIN WEST
COMMERCIAL REAL ESTATE

SHAD WEBB

swebb@mwcre.com

direct 435.459.0212

[View Profile](#)

PROPERTY DETAILS

1064 SOUTH NORTH COUNTY BOULEVARD, SUITE 330, PLEASANT GROVE, UTAH 84062

- Sublease Rate: \$26.75/SF Full Service
- Suite 330: 4,767 SF
- Sublease Expiration: August 31, 2026
- Plug and Play Office
- On Site Gym and Shower Amenities
- EV Charging
- Bike Storage
- Class A Office
- Immediate Freeway Access



FULL SERVICE
COMMERCIAL REAL ESTATE

2015 West Grove Parkway, Suite J

Pleasant Grove, UT 84062

Office 385.233.9140

www.mwcre.com

SITE PLAN



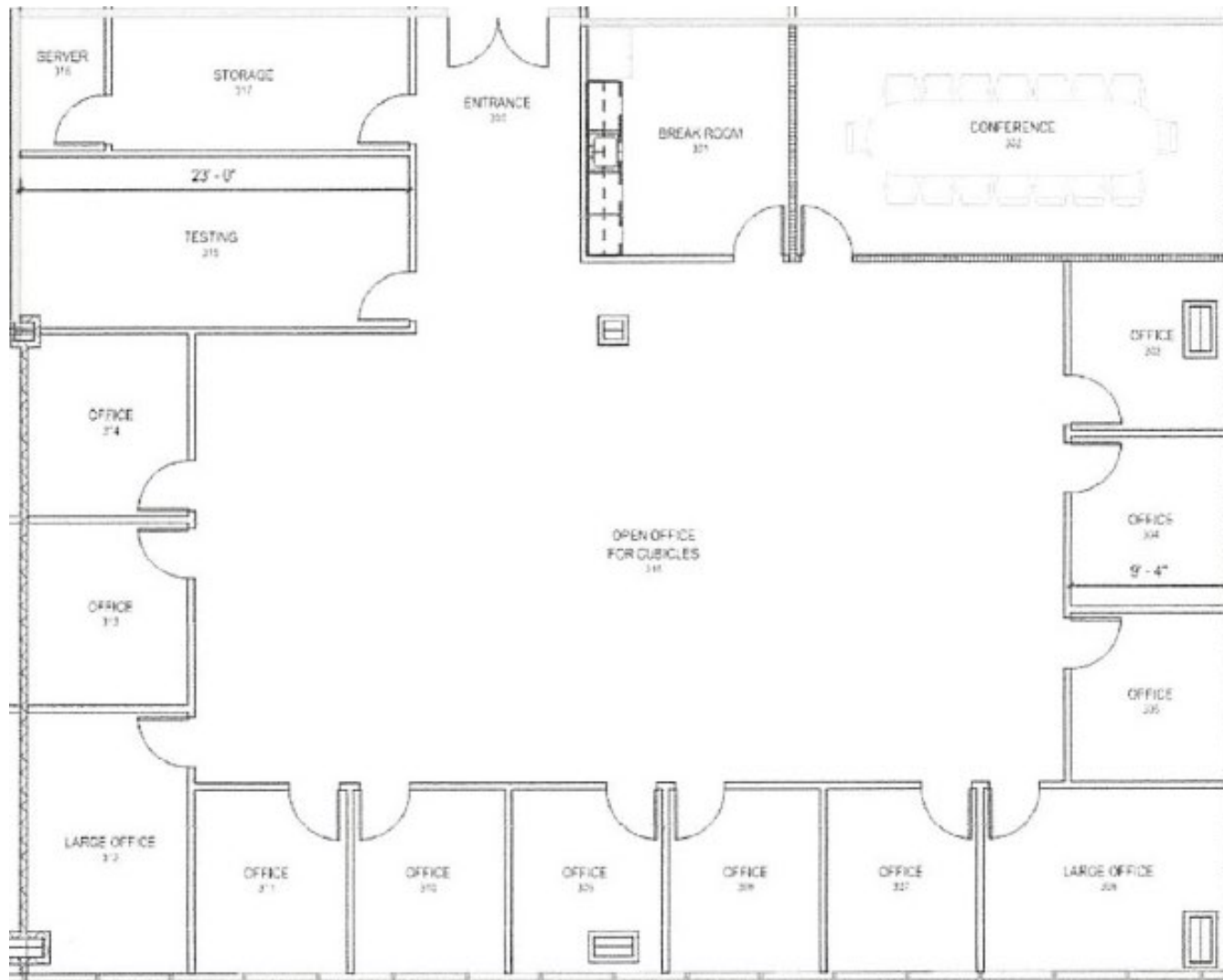
MOUNTAIN WEST
COMMERCIAL REAL ESTATE

SHAD WEBB

swebb@mwcre.com

direct 435.459.0212

[View Profile](#)



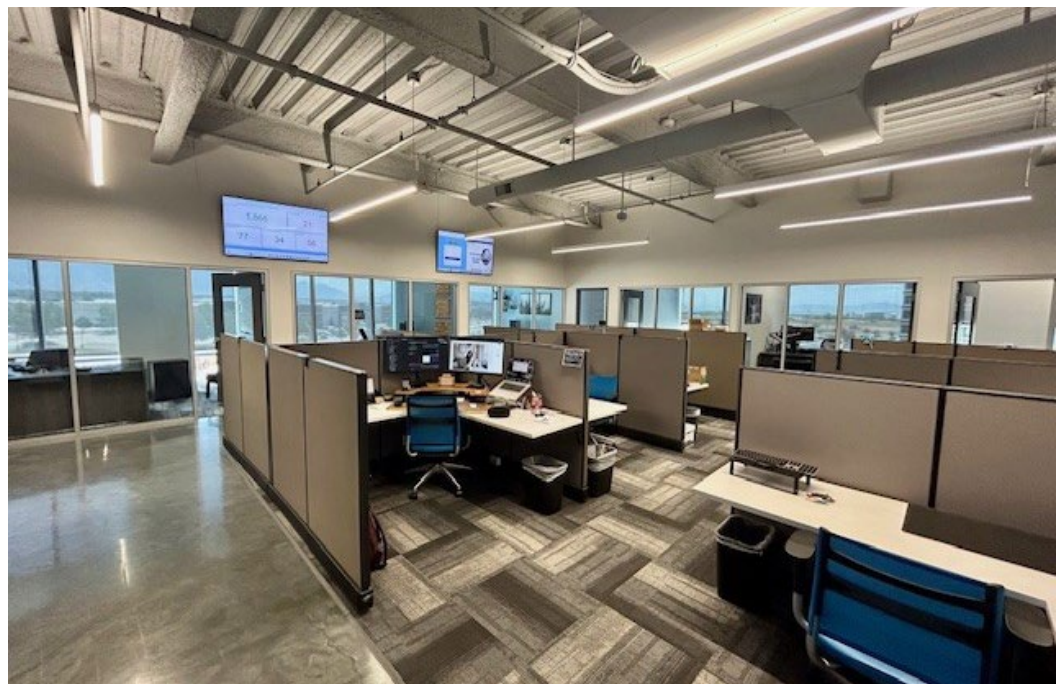
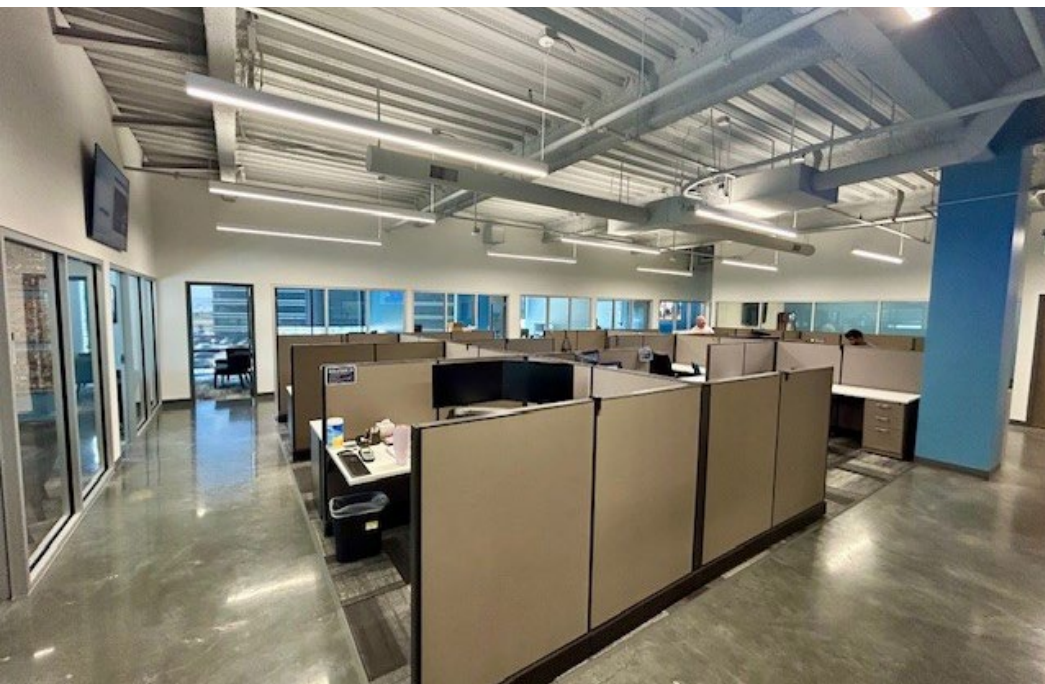
**FULL SERVICE
COMMERCIAL REAL ESTATE**

2015 West Grove Parkway, Suite J

Pleasant Grove, UT 84062

Office 385.233.9140

www.mwcre.com



MOUNTAIN WEST
COMMERCIAL REAL ESTATE

SHAD WEBB

swebb@mwcre.com

direct 435.459.0212

[View Profile](#)

**FULL SERVICE
COMMERCIAL REAL ESTATE**

2015 West Grove Parkway, Suite J

Pleasant Grove, UT 84062

Office 385.233.9140

www.mwcre.com

PRODUCT LEGEND

- Multi-Story Office
- Single-Story Office
- Flex/R&D
- Pad Sites
- Retail
- Hotel



Retail Electronic Pylon Sign



I-15 Electronic Pylon Sign

Retail Amenities at Valley Grove:



SHAD WEBB

swebb@mwcre.com

direct 435.459.0212

[View Profile](#)

MOUNTAIN WEST
COMMERCIAL REAL ESTATE

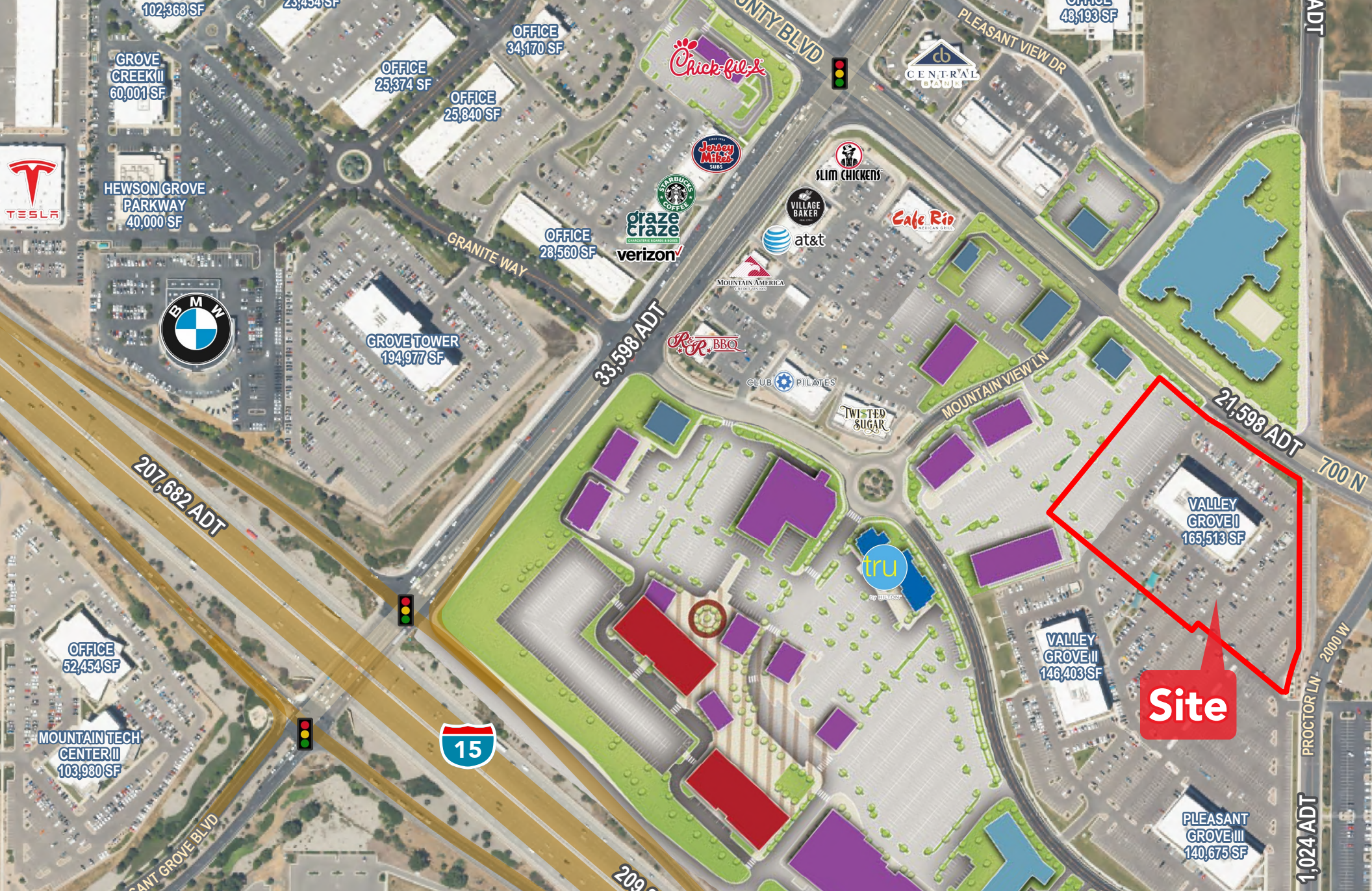
FULL SERVICE
COMMERCIAL REAL ESTATE

2015 West Grove Parkway, Suite J

Pleasant Grove, UT 84062

Office 385.233.9140

www.mwcre.com



MOUNTAIN WEST
COMMERCIAL REAL ESTATE

SHAD WEBB

swebb@mwcre.com

direct 435.459.0212

[View Profile](#)

**FULL SERVICE
COMMERCIAL REAL ESTATE**

2015 West Grove Parkway, Suite J

Pleasant Grove, UT 84062

Office 385.233.9140

www.mwcre.com