

8660 Hayden Pl Culver City, CA 90232



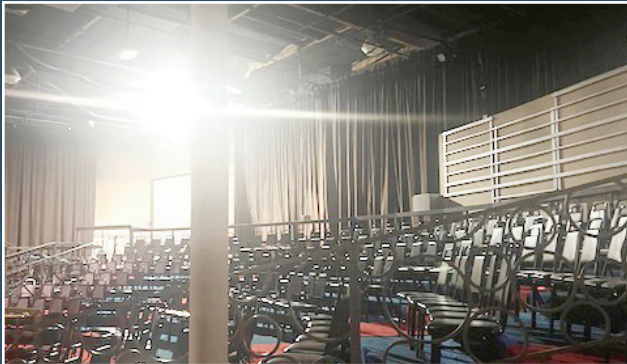
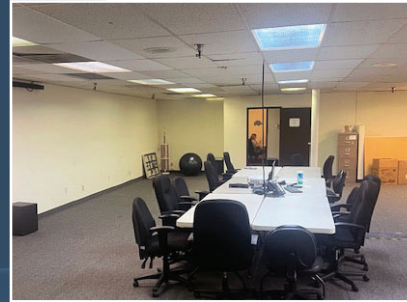
75,000 RSF PRODUCTION FACILITY AVAILABLE FOR SUBLEASE



8660

HAYDEN PLACE CULVER CITY

Now Available through April 2028, this 75,000 square foot production space in Culver City can support the needs of production teams. This versatile facility combines an expansive production floor with comfortable office spaces and ample meeting rooms. Ideal for film, television, advertising, and digital content production, the space offers an open layout and high ceilings. In close proximity to major studios and fantastic amenities and within a vibrant neighborhood, this Culver City gem is the perfect backdrop for bringing creative visions to life.



8660

HAYDEN PLACE CULVER CITY



Lighting grid across stages 3/4 & 7



Ample office and meeting room space



Live Studio with 190 seats



23' Ceiling height/ 21'3 to the lighting grid



3 Loading docks at ground floor height and 1 loading door ramp



1 Gig fiber internet



127 Parking Spaces



Available Now through April 2028



AMENITIES



- 1. Annapurna Cuisine
- 2. Breakfast Republic
- 3. Cafe Vida
- 4. Starbucks
- 5. Jameson's Pub - Culver City
- 6. Honey's Kettle Fried Chicken
- 7. Trader Joe's

- 8. In-N-Out Burger
- 9. Wingstop
- 10. Wendy's
- 11. Del Taco
- 12. Jerry's Market
- 13. JULIET
- 14. Bianca

- 15. Platform
- 16. Roberta's
- 17. Bar Nine
- 18. ChowNow
- 19. Vespertine
- 20. Destroyer
- 21. Target



- 22. Equinox Culver City
- 23. JAG Gym



- 24. The Culver Hotel
- 25. The Shay - Destination by Hyatt



- 26. The Culver Steps
- 27. Ivy Station
- 28. Rolling Greens Culver City

FLOORPLAN

8660

HAYDEN PLACE CULVER CITY

L: 90'
W: 40'
H: 23'

STAGE 6

L: 115'
W: 160/125'
H: 23'

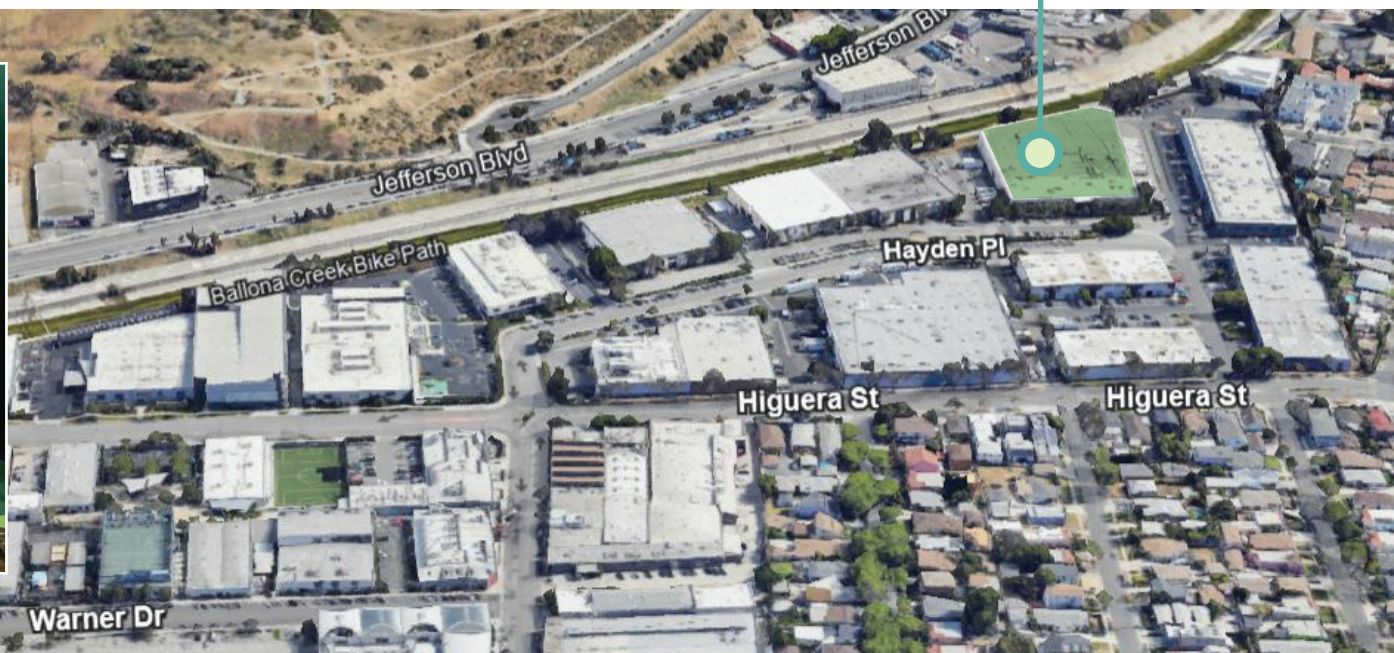
STAGE 7

L: 105' W: 40' L: 115'
 H: 23'

STAGE 3/4

L: 114'
W: 50'
H: 23'

STAGE 5



75,000 RSF FOR SUBLEASE



For more information, contact the leasing team:

JIM SCHOOLFIELD

Managing Director
Jim.Schoolfield@jll.com
215.880.2906

BLAKE SEARLES

Senior Managing Director
Blake.Searles@jll.com
787.407.9730

MICHAEL FREIBERG

Executive Vice President
Michael.Freiberg@jll.com
310.717.7195

WILLIAM KIRCHER

Senior Associate
Will.Kircher@jll.com
310.595.3842

8660

HAYDEN PLACE CULVER CITY

JLL disclaimer (universal): Although information has been obtained from sources deemed reliable, neither Owner nor JLL makes any guarantees, warranties or representations, express or implied, as to the completeness or accuracy as to the information contained herein. Any projections, opinions, assumptions or estimates used are for example only. There may be differences between projected and actual results, and those differences may be material. The Property may be withdrawn without notice. Neither Owner nor JLL accepts any liability for any loss or damage suffered by any party resulting from reliance on this information. If the recipient of this information has signed a confidentiality agreement regarding this matter, this information is subject to the terms of that agreement. ©2024 Jones Lang LaSalle IP, Inc.