

25 S  
**HANFORD**  
STREET

SoDo Warehouse Space

26,228 SF | *Available Now*

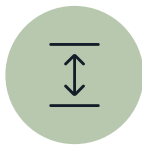
25 S Hanford Street, Seattle, WA 98134







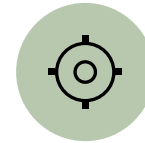
Mix of Office &  
Warehouse Space



Clear Height:  
15'



Total Loading Doors:  
5 Dock-high



Zoning:  
Maritime zoning



26,228 SF Total  
Available Now



Tenant Signage:  
Prominent signage  
available



Directly adjacent to  
the Port of Seattle



Excellent Truck  
maneuvering and parking  
with close-in location

# SUITE 25

**16,321 SF TOTAL**

4,743 SF OFFICE

11,578 SF WAREHOUSE

**AVAILABLE NOW**

▲ NORTH



Office



Work Area



Warehouse



Dock-high Loading

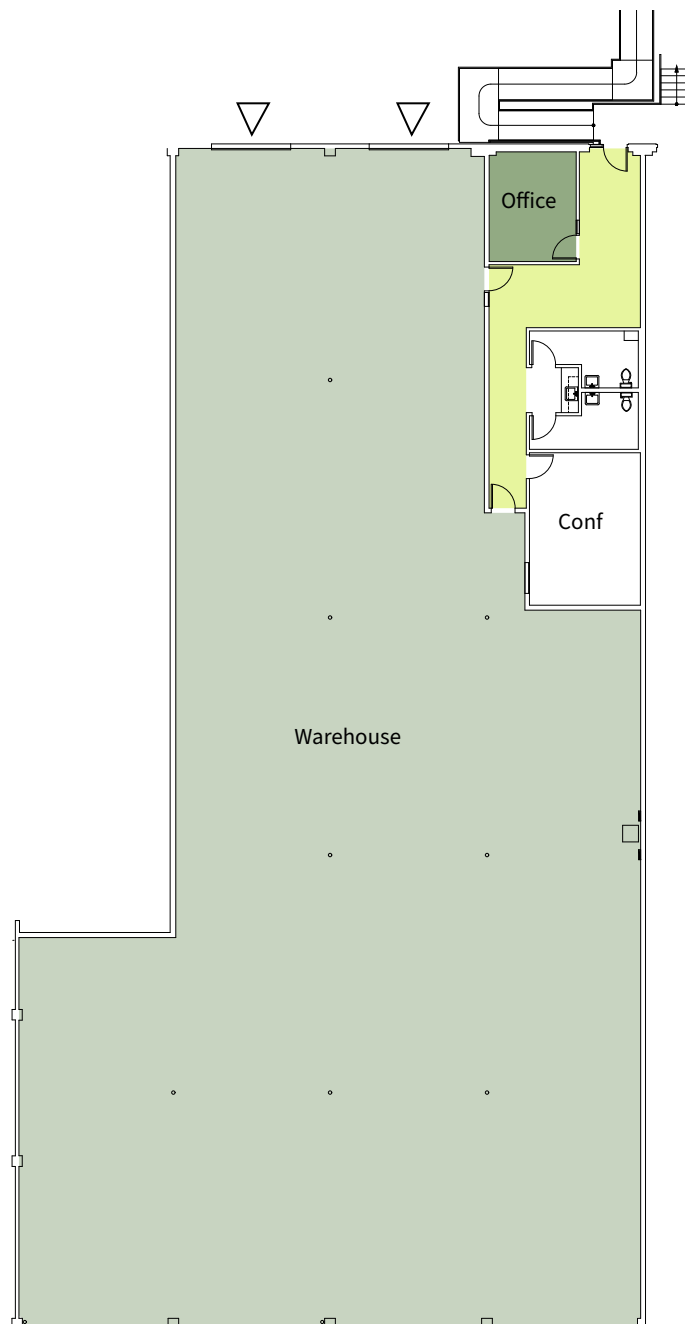
# SUITE 27

**9,907 SF TOTAL**

1,093 SF OFFICE

8,814 SF WAREHOUSE

**AVAILABLE NOW**



▲ NORTH



Office



Work Area



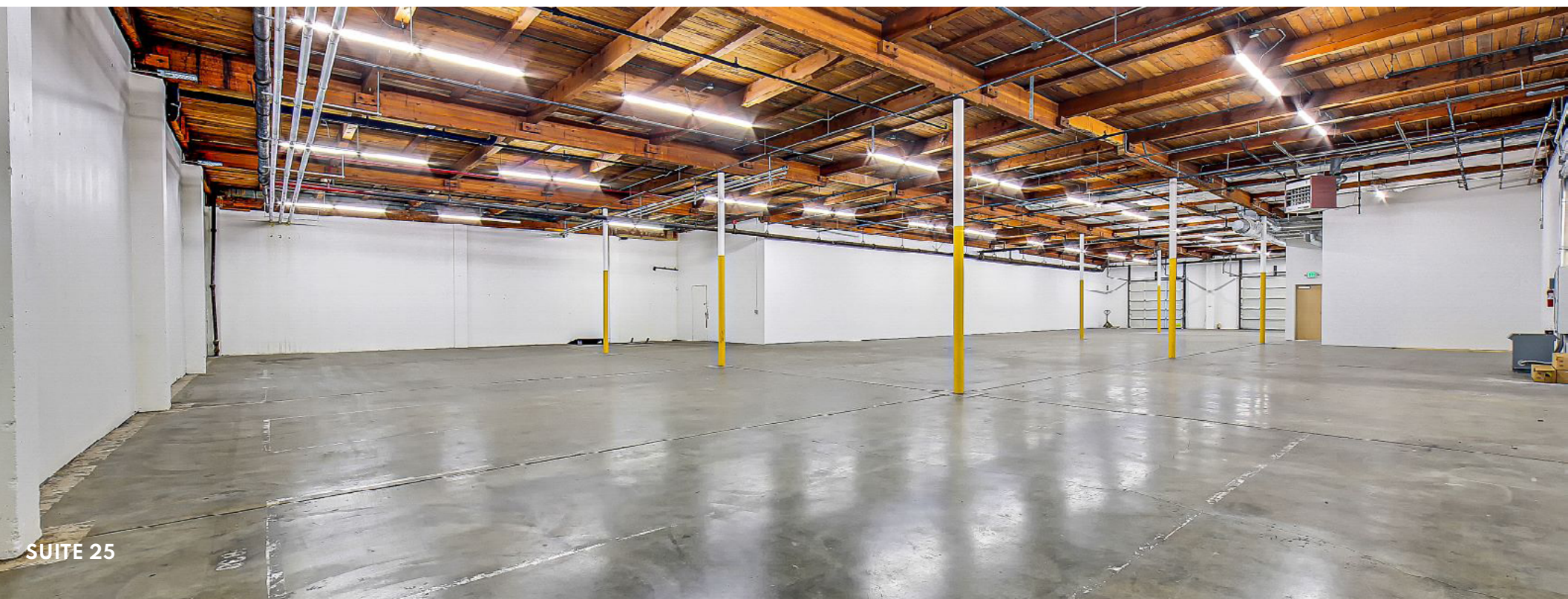
Warehouse



Dock-high Loading



## Dock-high Loading







## DRIVE TIMES

**0.5 miles**  
Port of Seattle

**2 Miles**  
Downtown Seattle

**11 Miles**  
SeaTac Airport

**12 Miles**  
Downtown Bellevue





# 25 S HANFORD STREET

**Jake Bos**

jake.bos@jll.com  
+1 206 384 3814

**Bailey Hallis**

bailey.hallis@jll.com  
+1 206 777 5203



**N NICOLA**  
WEALTH  
— REAL ESTATE —

Although information has been obtained from sources deemed reliable, JLL does not make any guarantees, warranties or representations, express or implied, as to the completeness or accuracy as to the information contained herein. Any projections, opinions, assumptions or estimates used are for example only. There may be differences between projected and actual results, and those differences may be material. JLL does not accept any liability for any loss or damage suffered by any party resulting from reliance on this information. If the recipient of this information has signed a confidentiality agreement with JLL regarding this matter, this information is subject to the terms of that agreement. ©2024 Jones Lang LaSalle Brokerage, Inc. All rights reserved.