



200 W Black Horse Pike (aka 200 W Verona Ave)

200 W Black Horse Pike, Pleasantville, NJ 08232

Arqeo

David Lerman

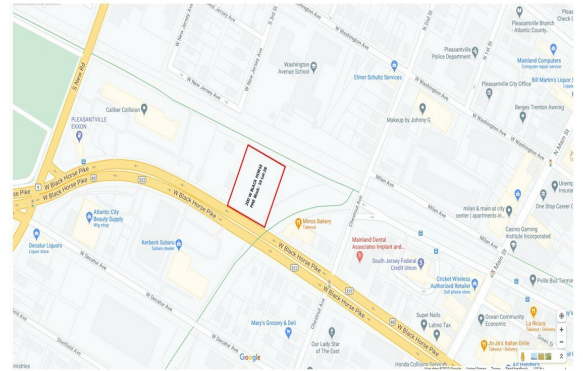
Arqeo Management
1519 Spruce St, Suite 1000, Philadelphia, PA 19102
dlerman@arqeo.com
(215) 545-4545 Ext: 13



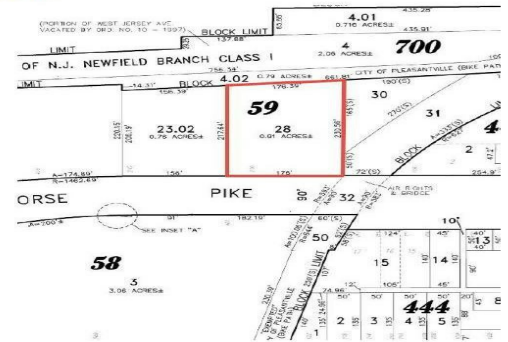
200 W Black Horse Pike (aka 200 W Verona Ave)

\$250,000

Available for sale.
Property is less than one block from the major signalized intersection of New Road (Route 9) and Black Horse Pike (Routes 40/322). New Road is an exit off of the Atlantic City Expressway, providing several easy routes to access Atlantic City, other southern Shore points, and the greater Philadelphia metropolitan area....



PARCEL MAP



Price:	\$250,000
Property Type:	Land
Property Subtype:	Commercial
Proposed Use:	Commercial
Sale Type:	Investment
Total Lot Size:	0.93 AC
No. Lots:	1
Zoning Description:	RC
APN / Parcel ID:	19-00059-0000-00028



200 W Black Horse Pike, Pleasantville, NJ 08232

Available for sale.

Property is less than one block from the major signalized intersection of New Road (Route 9) and Black Horse Pike (Routes 40/322). New Road is an exit off of the Atlantic City Expressway, providing several easy routes to access Atlantic City, other southern Shore points, and the greater Philadelphia metropolitan area.