



Opportunity

- First floor suite with 1,807 sf & 2,422 sf available
- Second floor suite with 875 - 1,875 sf available
- Centrally located office building with quick access to I-40, I-24, and I-440
- Building overlooks I-40 East between Elm Hill Pike, and Murfreesboro Road
- Aggressive full service rates (less in-suite janitorial)
- After hours key card access

Get more information

Ben Burns, CCIM

Vice President

+1 615 727 7432

ben.burns@avisonyoung.com

Floor one

Suite 122
2,422 sf

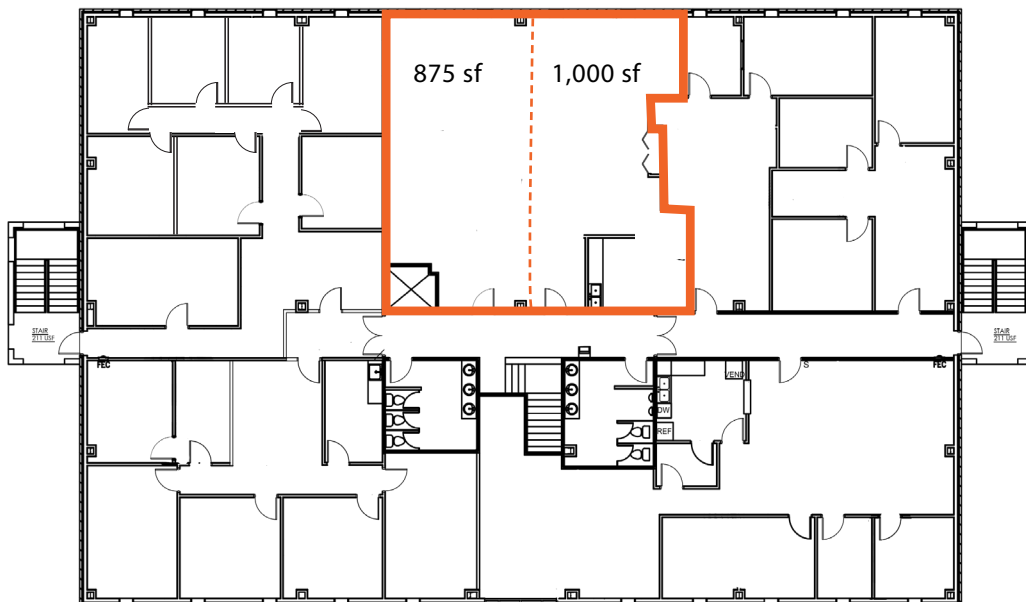


Suite 100
1,807 sf
Available 9/1/26

Floor two

Suite 220
1,875 sf

*Can demise to
875 sf and 1,000 sf*



Map

