

375 EUREKA ROAD
WYANDOTTE, MICHIGAN

MEDICAL FOR LEASE
2,200 – 4,700 Square Feet Available



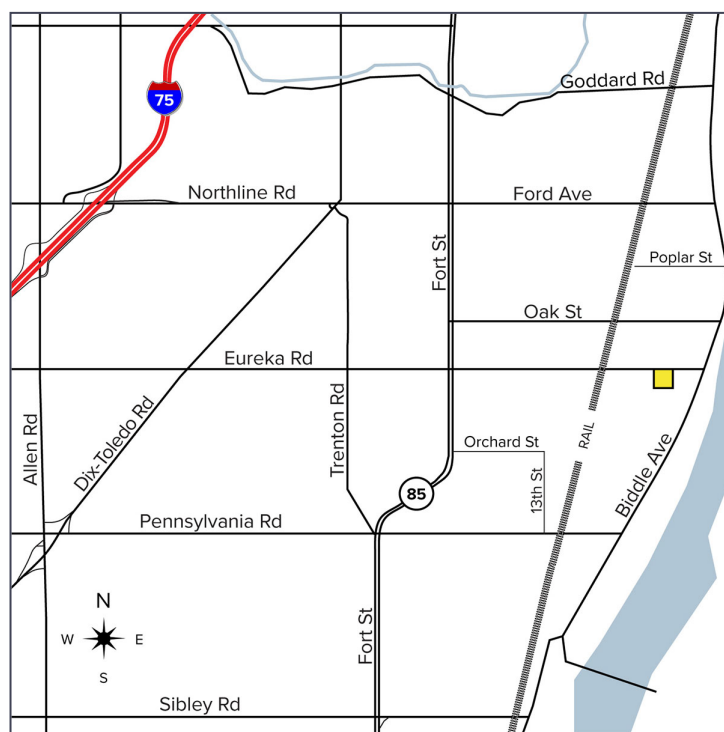
**SIGNATURE
ASSOCIATES**
KNOW SIGNATURE | KNOW RESULTS

TURN-KEY MEDICAL OFFICE



PROPERTY FEATURES

- 2,200 – 4,700 square feet available
- Recently fully remodeled space for lease in Downtown Wyandotte
- Near Henry Ford Wyandotte Hospital and Corewell Health Hospital
- Could also be general office or retail
- 14 parking spaces
- Lease Rate: \$18.00/sq. ft. NNN



For more information, please contact:

JUSTIN GAFFREY
(248) 799 3143
jgaffrey@signatureassociates.com

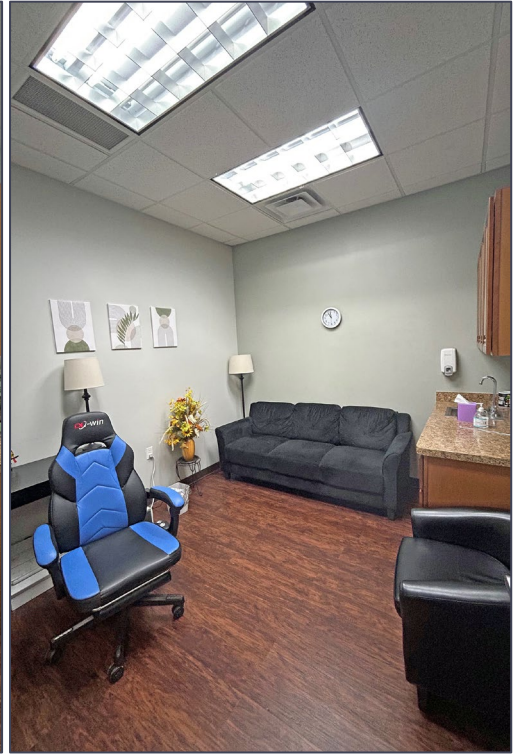
SIGNATURE ASSOCIATES
One Towne Square, Suite 1200
Southfield, MI 48076
www.signatureassociates.com

375 Eureka Road – Wyandotte, Michigan

Medical For Lease

2,200 – 4,700
Square Feet
AVAILABLE

Interior Photos



For more information, please contact:

JUSTIN GAFFREY
(248) 799 3143
jgaffrey@signatureassociates.com

SIGNATURE ASSOCIATES
One Towne Square, Suite 1200
Southfield, MI 48076
www.signatureassociates.com

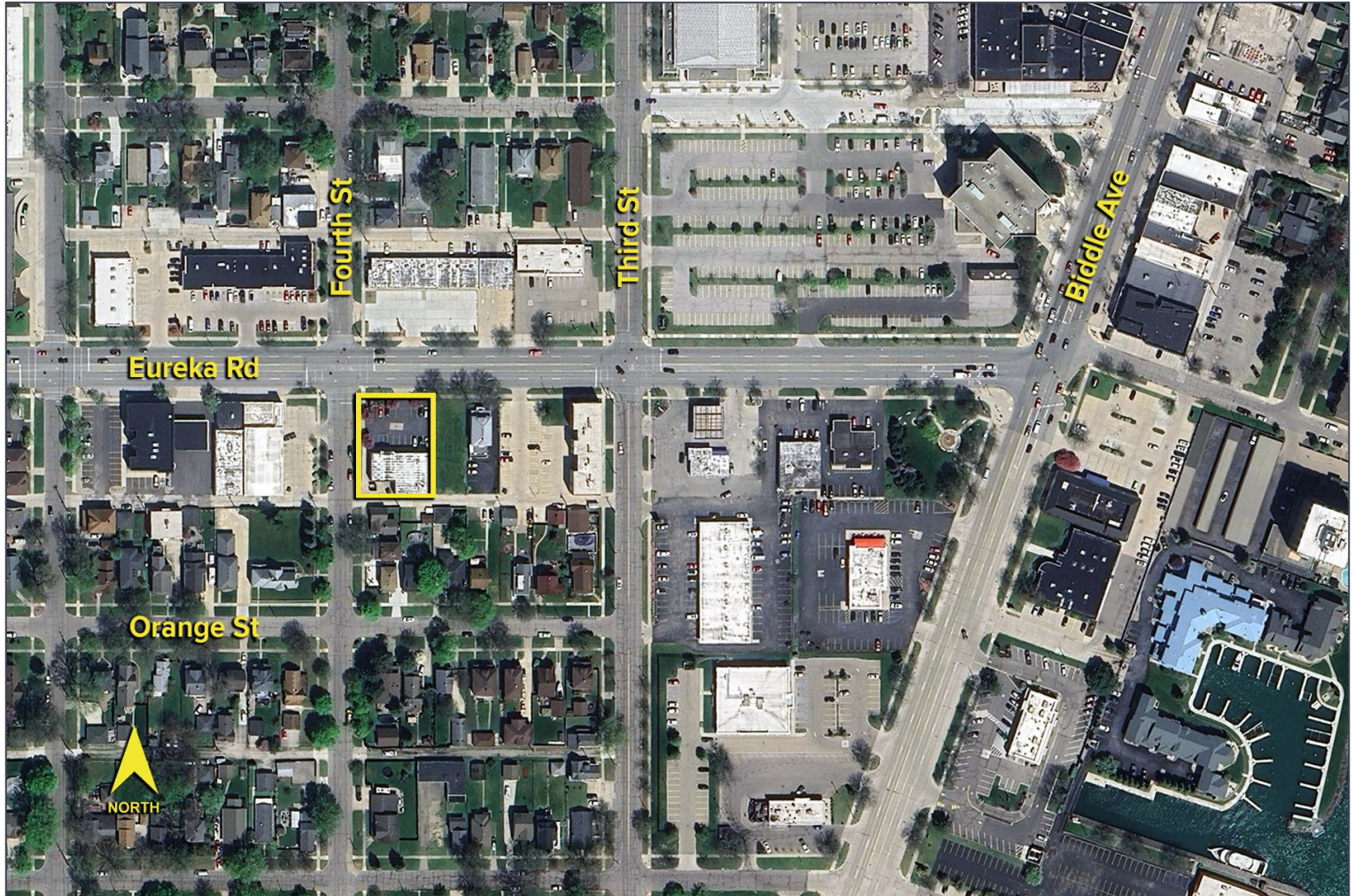
Information is subject to verification and no liability for errors or omissions is assumed. Price is subject to change and listing withdrawal.

375 Eureka Road – Wyandotte, Michigan

Medical For Lease

2,200 – 4,700
Square Feet
AVAILABLE

Aerial



For more information, please contact:

JUSTIN GAFFREY
(248) 799 3143
jgaffrey@signatureassociates.com

SIGNATURE ASSOCIATES
One Towne Square, Suite 1200
Southfield, MI 48076
www.signatureassociates.com

Information is subject to verification and no liability for errors or omissions is assumed. Price is subject to change and listing withdrawal.