

Robinson Plaza | Walmart Shadow Center | Retail Space Available for Lease

1302 E Main Street, Robinson, IL

Features

- Highly Visible Center in Prime Location
- Situated between Population Center & Walmart
- Heavily traveled Main Street with 11,300 VPD
- Strong Retail Corridor anchored by Walmart Supercenter

Strong Demographics

- Population of 9,694 in 5-mile radius
- Average household income of \$90,661 within 5 miles



Site
Robinson Plaza

Exclusively Presented By: Trevor Paul

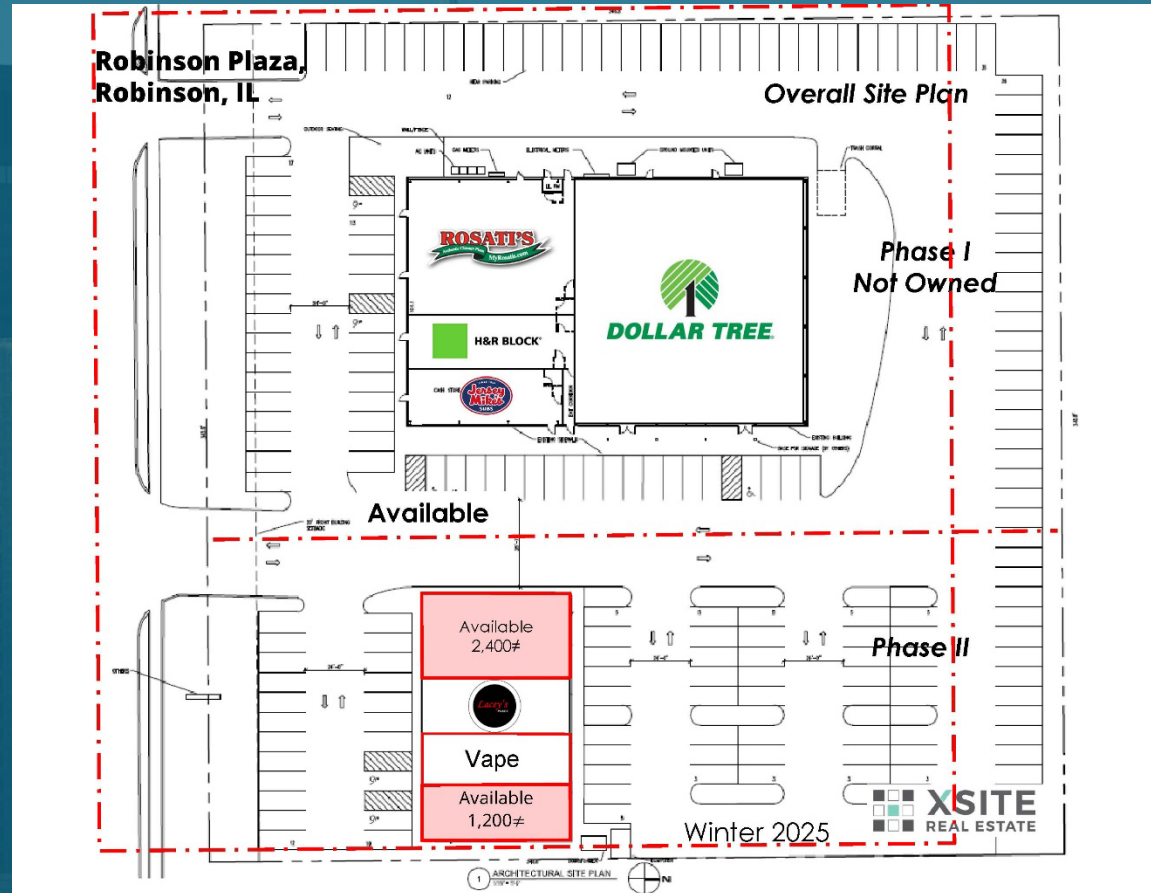
Xsite Real Estate

(630) 432-1879

trevorpaul@xsiterealestate.com



Robinson Plaza | Walmart Shadow Center | Retail Space Available for Lease



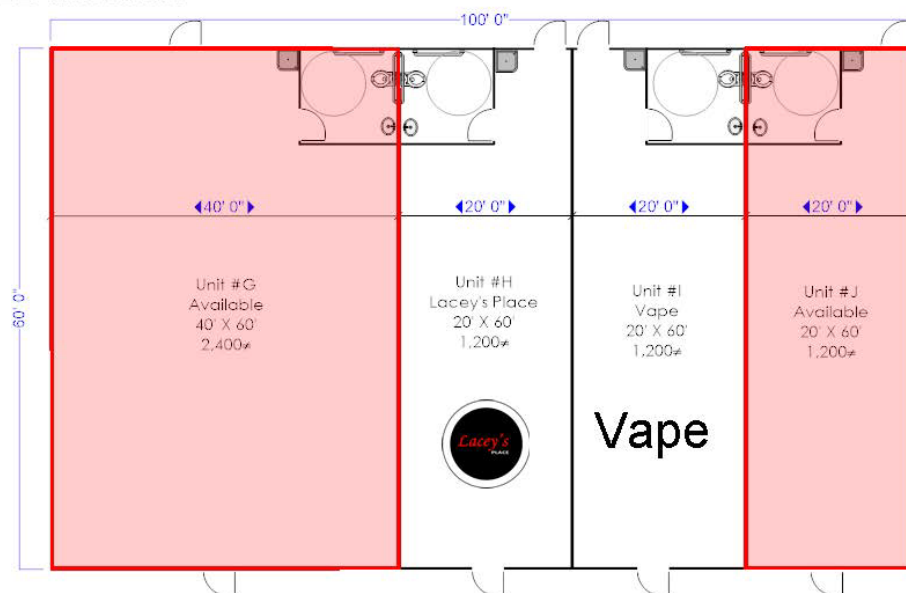
Exclusively Presented By: Trevor Paul
Xsite Real Estate
(630) 432-1879
trevorpaul@xsiterealestate.com



Robinson Plaza | Walmart Shadow Center | Retail Space Available for Lease

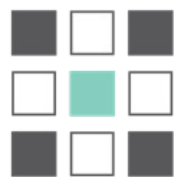


Robinson Plaza
1302 East Main Street, Robinson, IL



Land size:	1.02 acres/44,431 sq ft
Building Size:	6,000 sq ft
Total GLA:	6,000 sq ft

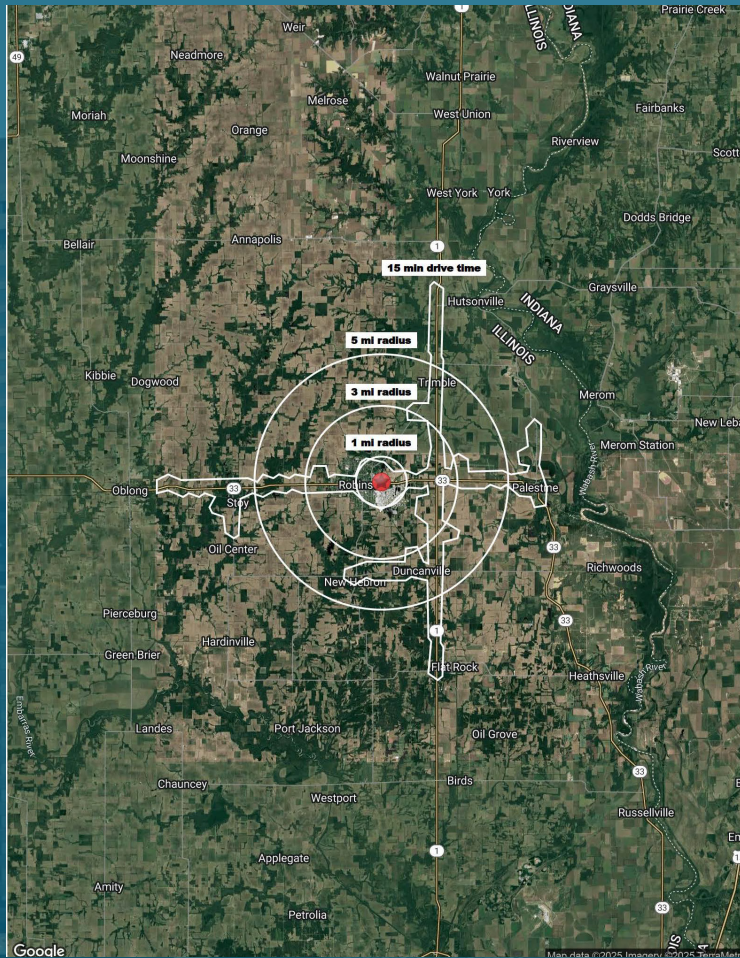
Winter 2025



XSITE
REAL ESTATE

Exclusively Presented By: Trevor Paul
Xsite Real Estate
(630) 432-1879
trevorpaul@xsiterealestate.com

Robinson Plaza | Walmart Shadow Center | Retail Space Available for Lease



1302 E Main St Robinson, IL 62454	1 mi radius	3 mi radius	5 mi radius	15 min drive time
Population				
Estimated Population (2024)	2,658	8,133	9,694	5,934
Projected Population (2029)	2,481	7,689	9,191	5,570
Census Population (2020)	2,659	8,138	9,731	5,956
Census Population (2010)	2,832	8,747	10,415	6,412
Projected Annual Growth (2024-2029)	-177 -1.3%	-444 -1.1%	-503 -1.0%	-364 -1.2%
Historical Annual Growth (2020-2024)	-1 -	-5 -	-37 -	-22 -
Historical Annual Growth (2010-2020)	-193 -0.7%	-609 -0.7%	-684 -0.7%	-457 -0.7%
Estimated Population Density (2024)	847 psm	288 psm	123 psm	221 psm
Trade Area Size	3.1 sq mi	28.3 sq mi	78.5 sq mi	26.9 sq mi
Households				
Estimated Households (2024)	1,129	3,184	3,784	2,481
Projected Households (2029)	1,049	2,980	3,553	2,313
Census Households (2020)	1,119	3,209	3,818	2,498
Census Households (2010)	1,205	3,385	3,998	2,663
Projected Annual Growth (2024-2029)	-80 -1.4%	-205 -1.3%	-231 -1.2%	-167 -1.3%
Historical Annual Change (2010-2024)	-75 -0.4%	-201 -0.4%	-214 -0.4%	-182 -0.5%
Average Household Income				
Estimated Average Household Income (2024)	\$79,583	\$87,898	\$90,661	\$82,926
Projected Average Household Income (2029)	\$81,893	\$90,834	\$93,893	\$85,339
Census Average Household Income (2010)	\$42,209	\$48,204	\$50,500	\$44,925
Census Average Household Income (2000)	\$33,173	\$39,731	\$41,266	\$37,244
Projected Annual Change (2024-2029)	\$2,310 0.6%	\$2,936 0.7%	\$3,232 0.7%	\$2,413 0.6%
Historical Annual Change (2000-2024)	\$46,409 5.8%	\$48,166 5.1%	\$49,396 5.0%	\$45,681 5.1%
Median Household Income				
Estimated Median Household Income (2024)	\$60,457	\$65,619	\$66,778	\$60,892
Projected Median Household Income (2029)	\$60,547	\$66,392	\$67,614	\$61,653
Census Median Household Income (2010)	\$35,961	\$38,547	\$40,265	\$37,083
Census Median Household Income (2000)	\$28,789	\$31,776	\$33,139	\$31,040
Projected Annual Change (2024-2029)	\$90 -	\$773 0.2%	\$837 0.3%	\$762 0.3%
Historical Annual Change (2000-2024)	\$31,668 4.6%	\$33,843 4.4%	\$33,639 4.2%	\$29,852 4.0%
Per Capita Income				
Estimated Per Capita Income (2024)	\$33,944	\$34,494	\$35,467	\$34,751
Projected Per Capita Income (2029)	\$34,761	\$35,284	\$36,380	\$35,531
Census Per Capita Income (2010)	\$17,812	\$18,656	\$19,393	\$18,651
Census Per Capita Income (2000)	\$14,769	\$14,960	\$15,406	\$15,416
Projected Annual Change (2024-2029)	\$817 0.5%	\$790 0.5%	\$913 0.5%	\$780 0.4%
Historical Annual Change (2000-2024)	\$19,174 5.4%	\$19,534 5.4%	\$20,062 5.4%	\$19,335 5.2%
Estimated Average Household Net Worth (2024)	\$708,811	\$820,293	\$864,565	\$828,107



Exclusively Presented By: Trevor Paul
Xsite Real Estate
(630) 432-1879
trevorpaul@xsiterealestate.com