

14751 32 Mile Rd

Romeo, MI



- 33,611 Square Feet For Lease
- Alarm System
- 4,000 Amps of 240 Volt Power
- ESFR Fire Suppression
- Tremendous Manufacturing Facility
- Main Road Frontage
- Completely Refurbished

INDUSTRIAL BUILDING FOR LEASE



27,111 SF of Factory



6,500 SF of Office



2 Exterior Truckwells



FOR MORE INFORMATION:

Joe DePonio III, SIOR
Senior Vice President
248.637.3513
jdeponio@LMCap.com



L. MASON CAPITANI
CORFAC INTERNATIONAL

248.637.9700 | LMCap.com

Information contained herein was obtained from sources deemed to be reliable but is not guaranteed. Subjects to prior sales, changes of price or withdrawal.

14751 32 Mile Rd

Romeo, MI



L. MASON CAPITANI
CORFAC INTERNATIONAL

Industrial Property Details:

Details:

Total SF:	33,611 SF
Available SF:	33,611 SF
Office SF:	4,900 SF
Factory SF:	28,711 SF
Zoning:	Industrial
Intersection:	32 Mile & M-53
X-Way Distance:	Directly Off M-53
Parking:	30 Spaces
Year Built:	1993
Year Renovated:	2026
Occupancy:	Immediate

Interior:

Ceiling Height:	14'
Restrooms:	7
Power:	4000
Power Details:	240 V
Lighting:	LED
Truckwells:	2 exterior
Grade Door:	(1) 12'x12', (1) 14'x14, (1) 8'x10'
Heating:	Gas Forced Air
A/C:	100%
Fire Supression:	Yes (ESFR)
Airlines:	Yes

Economic:

Lease/SF:	\$7.50
Lease/Month:	\$21,006.00
Lease Terms:	Gross

Notes: Lease rate includes real estate taxes, building insurance and exterior maintenance.

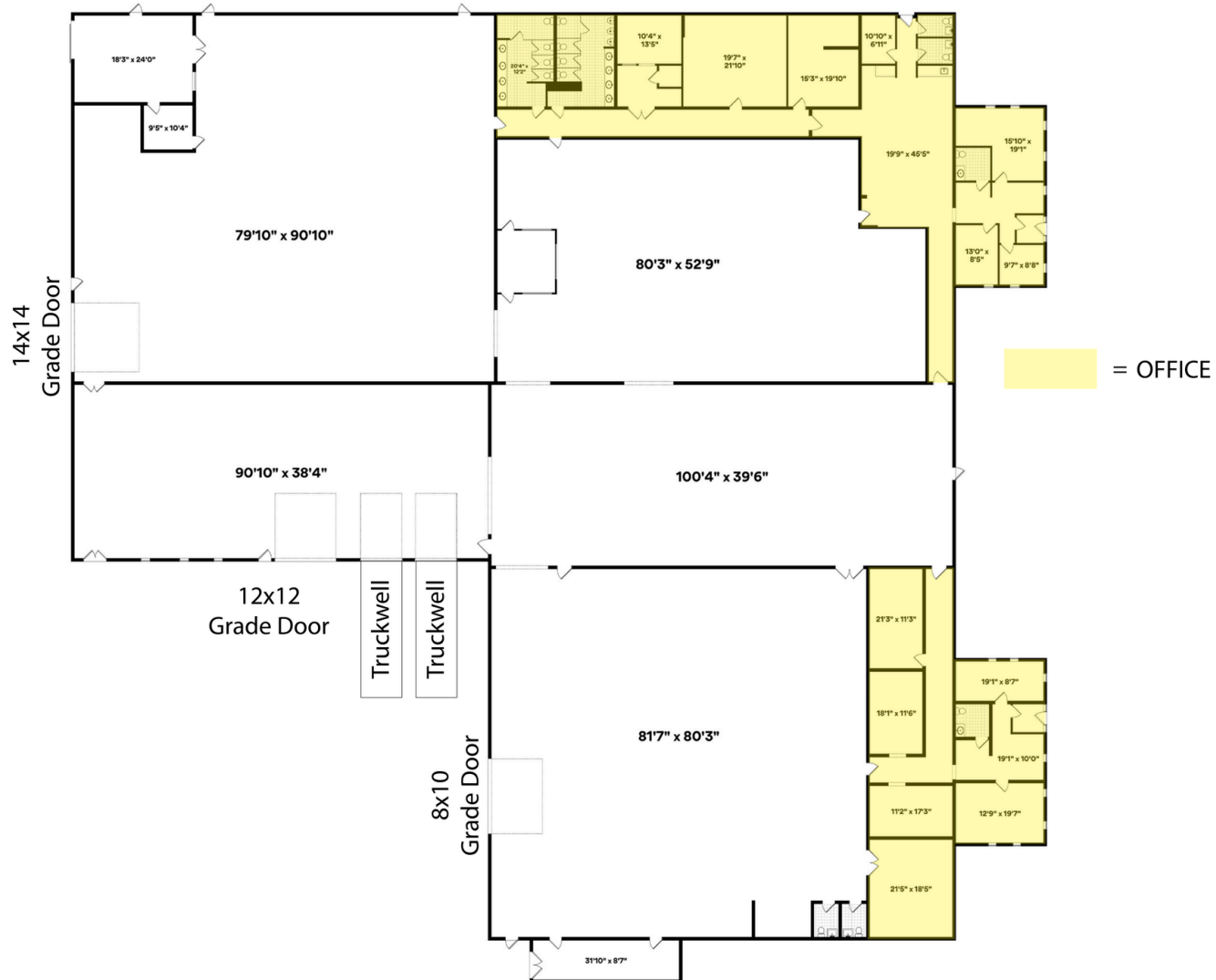
14751 32 Mile Rd

Romeo, MI



L. MASON CAPITANI
CORFAC INTERNATIONAL

Floor Plan



248.637.9700 | LMCap.com

Information contained herein was obtained from sources deemed to be reliable but is not guaranteed. Subjects to prior sales, changes of price or withdrawal.

14751 32 Mile Rd

Romeo, MI



L. MASON CAPITANI
CORFAC INTERNATIONAL



248.637.9700 | LMCap.com

Information contained herein was obtained from sources deemed to be reliable but is not guaranteed. Subjects to prior sales, changes of price or withdrawal.

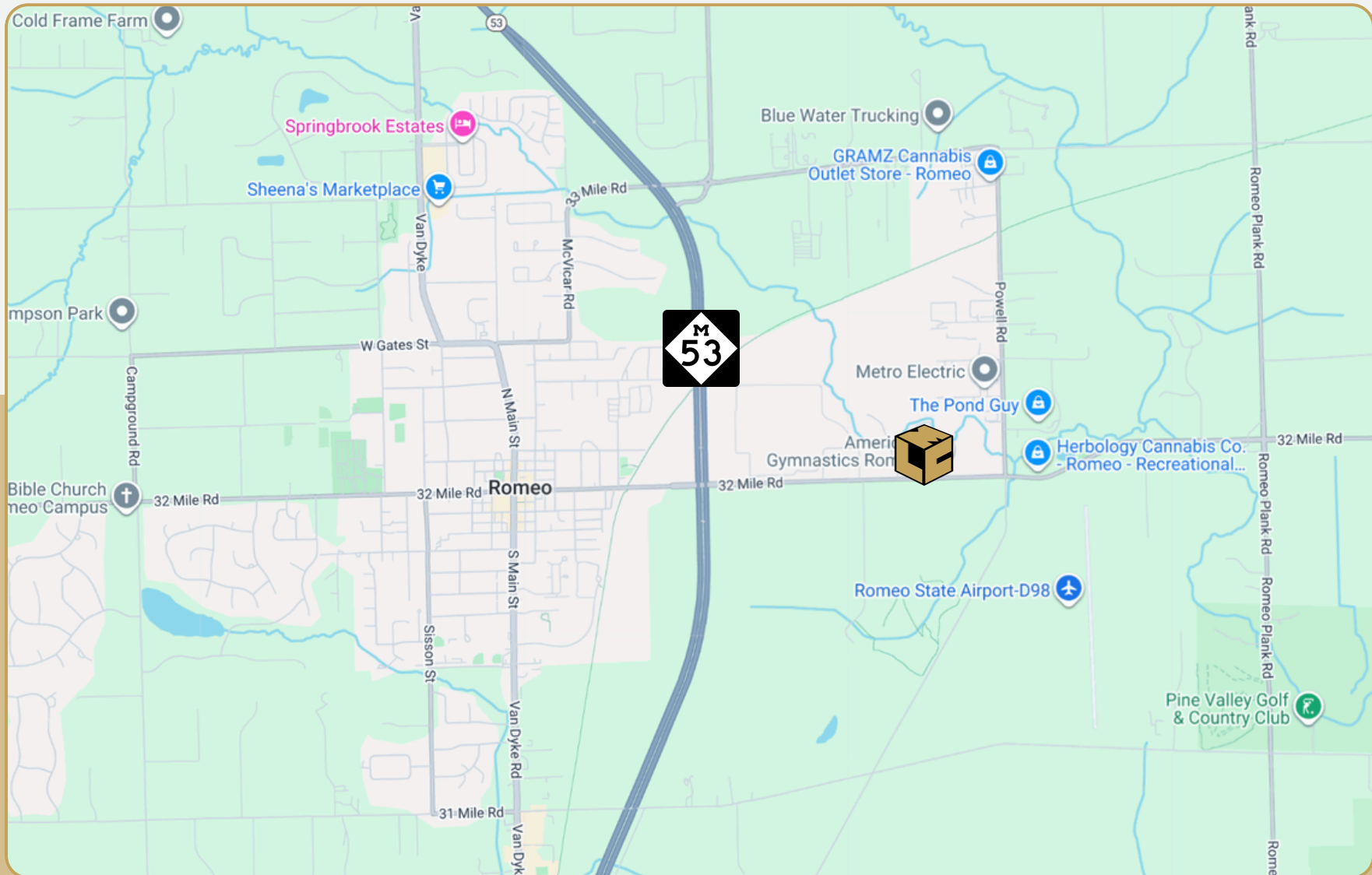
14751 32 Mile Rd

Romeo, MI



L. MASON CAPITANI

CORFAC INTERNATIONAL



248.637.9700 | LMCap.com

Information contained herein was obtained from sources deemed to be reliable but is not guaranteed. Subjects to prior sales, changes of price or withdrawal.

14761 32 Mile Rd

Romeo, MI



- 52,600 Square Feet For Lease
- First Class Warehouse Facility
- Located Just Off M-53
- Three Truckwells to be Installed by Summer 2026
- 100% Air Conditioned | ESFR Fire Suppression
- Main Road Frontage

INDUSTRIAL BUILDING FOR LEASE



48,700 SF of Factory



3,900 SF of Office



3 Exterior Truckwells



FOR MORE INFORMATION:

Joe DePonio III, SIOR
Senior Vice President
248.637.3513
jdeponio@LMCap.com



248.637.9700 | LMCap.com

Information contained herein was obtained from sources deemed to be reliable but is not guaranteed. Subjects to prior sales, changes of price or withdrawal.

14761 32 Mile Rd

Romeo, MI



L. MASON CAPITANI
CORFAC INTERNATIONAL

Industrial Property Details:

Details:

Total SF:	52,600 SF
Available SF:	52,600 SF
Office SF:	3,900 SF
Factory SF:	48,700 SF
Zoning:	Industrial
Intersection:	32 Mile & M-53
X-Way Distance:	Directly Off M-53
Parking:	45 Spaces
Year Built:	2006
Occupancy:	Immediate

Interior:

Ceiling Height:	24'
Bay Size:	50'
Restrooms:	3
Power:	1600
Power Details:	480 V
Lighting:	LED
Truckwells:	3 Exterior
Grade Door:	(3) 12'x14'
Heating:	Gas Forced/Radiant
A/C:	100%
Airlines:	Yes
Fire Suppression:	Yes (ESFR)

Economic:

Lease/SF:	\$8.95
Lease/Month:	\$39,230.83
Lease Terms:	Gross

Notes: Lease rate includes real estate taxes, building insurance and exterior maintenance.

14761 32 Mile Rd

Romeo, MI

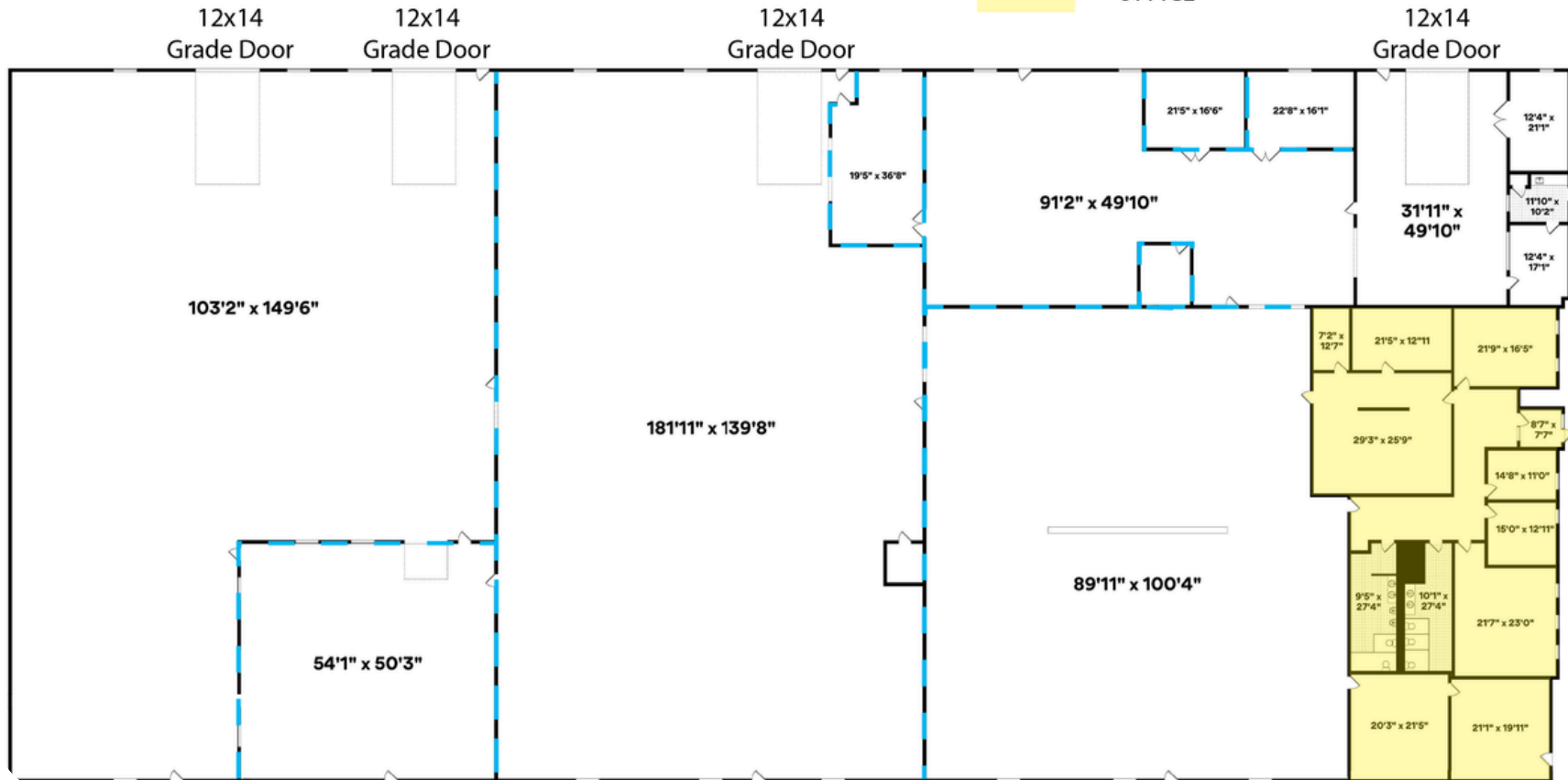


L. MASON CAPITANI

CORFAC INTERNATIONAL

Floor Plan

= WALLS CAN BE REMOVED
 = OFFICE



248.637.9700 | LMCap.com

Information contained herein was obtained from sources deemed to be reliable but is not guaranteed. Subjects to prior sales, changes of price or withdrawal.

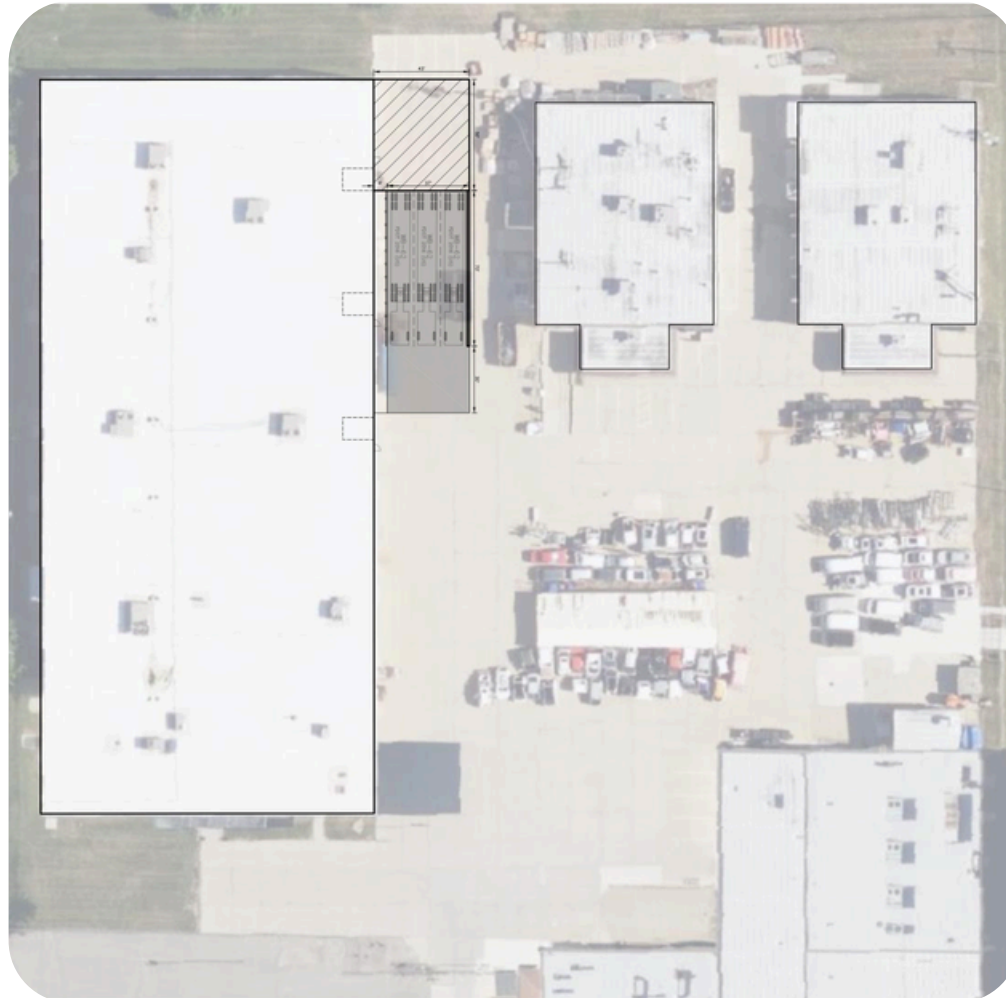
14761 32 Mile Rd

Romeo, MI



L. MASON CAPITANI
CORFAC INTERNATIONAL

Truckwell Layout



248.637.9700 | LMCap.com

Information contained herein was obtained from sources deemed to be reliable but is not guaranteed. Subjects to prior sales, changes of price or withdrawal.

14761 32 Mile Rd

Romeo, MI



L. MASON CAPITANI
CORFAC INTERNATIONAL



248.637.9700 | LMCap.com

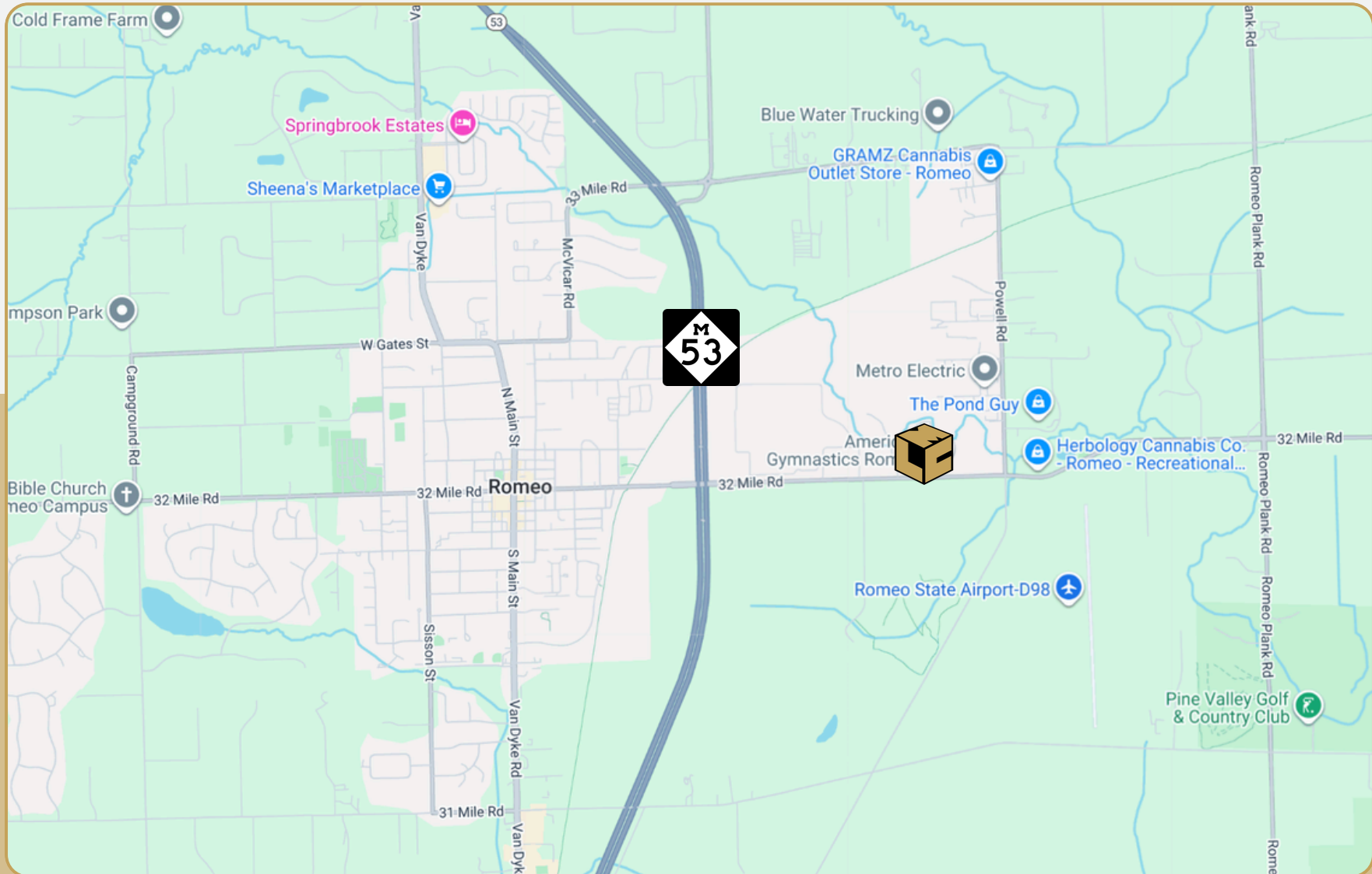
Information contained herein was obtained from sources deemed to be reliable but is not guaranteed. Subjects to prior sales, changes of price or withdrawal.

14761 32 Mile Rd

Romeo, MI



L. MASON CAPITANI
CORFAC INTERNATIONAL



248.637.9700 | LMCap.com

Information contained herein was obtained from sources deemed to be reliable but is not guaranteed. Subjects to prior sales, changes of price or withdrawal.