

CAPITOL PARK HOTEL RETAIL SPACE

Below 134 Studio Apartments

Available Fall 2024



1125 9TH STREET, SACRAMENTO, CA 95814

Retail Space 1: 955 SF

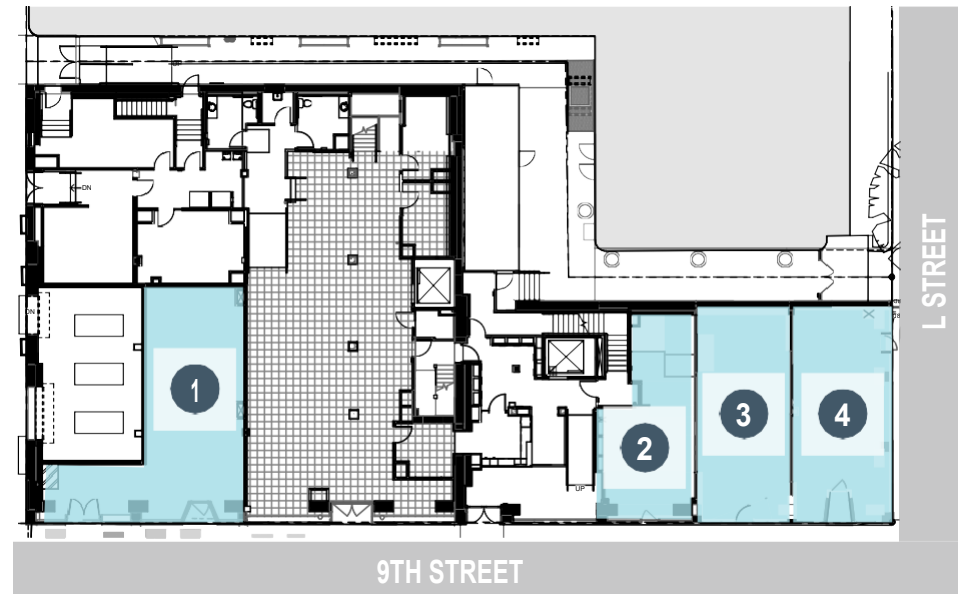
Retail Space 2: 537 SF

Retail Space 3: 600 SF

Retail Space 4: 579 SF

- Tenant Improvements (TI) allowance provided
- No Type 1 hoods. Type 2 hoods may be installed in some spaces
- NNN Rent

Capitol Park Hotel will be a mixed-use development located at the corner of 9th and L Streets in the heart of Downtown Sacramento. It will feature four ground-floor commercial spaces. The spaces will be leased separately, but some of the spaces could be combined. This is a terrific location for your business in a neighborhood with daytime, evening, and weekend customers!

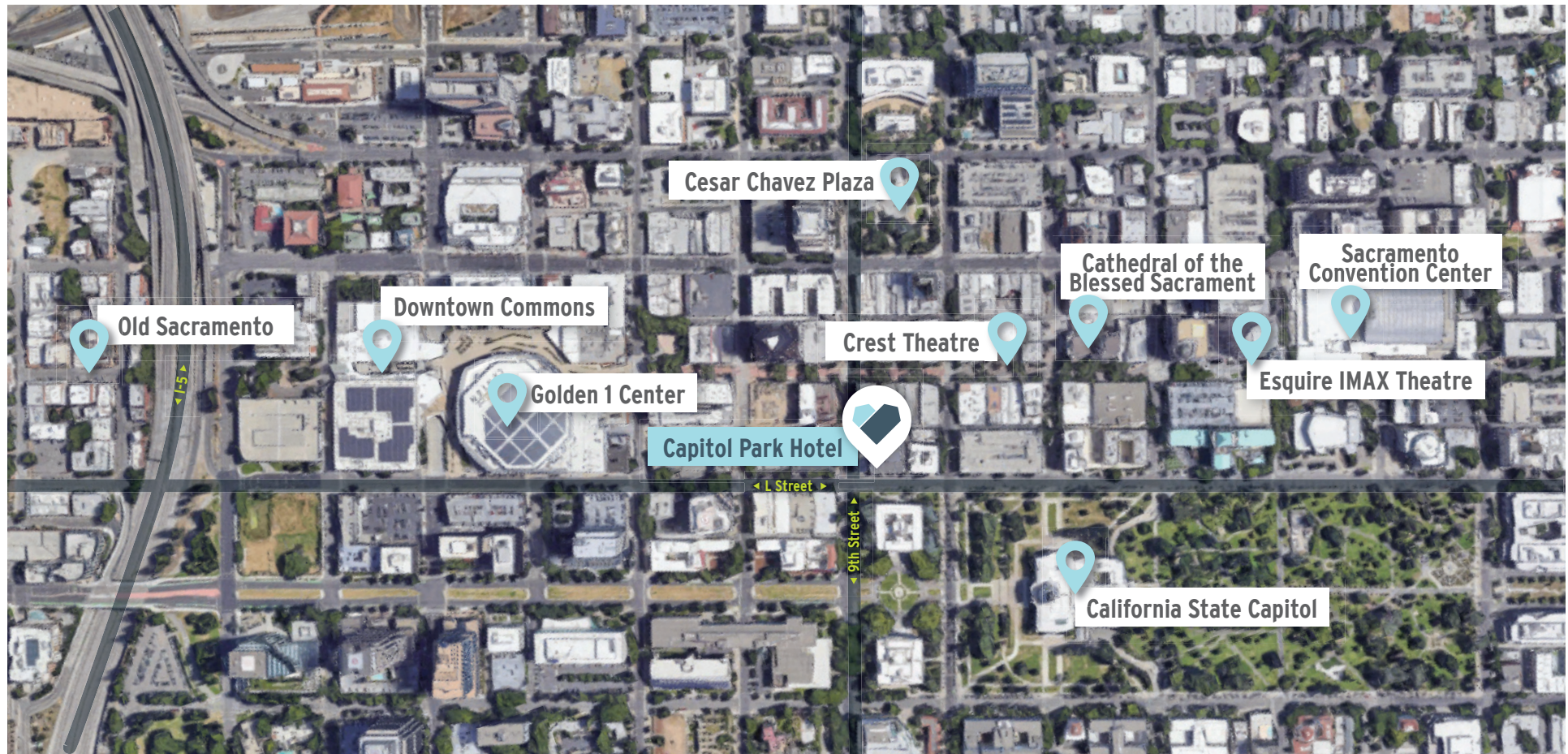


CONTACT
Julia Katz
Mercy Housing Commercial Developer
julia.katz@mercyhousing.org
415.915.6232

CAPITOL PARK HOTEL RETAIL SPACE

Below 134 Studio Apartments

Available Fall/Winter 2022



Retail Space 1: 955 SF
Retail Space 2: 537 SF
Retail Space 3: 600 SF
Retail Space 4: 579 SF

- Tenant Improvements (TI) allowance provided
- No Type 1 hoods. Type 2 hoods may be installed in some spaces
- NNN Rent

CONTACT
Julia Katz
Mercy Housing Commercial Developer
julia.katz@mercyhousing.org
415.915.6232