

EVERGREEN MEDICAL CENTER

Outpatient Medical Space

2365 Quimby Road, San Jose, CA

1,265 - 5,796 SF Available



CBRE

[CBRE.COM/SANJOSE](https://www.cbre.com/sanjoose)

BUILDING AMENITIES



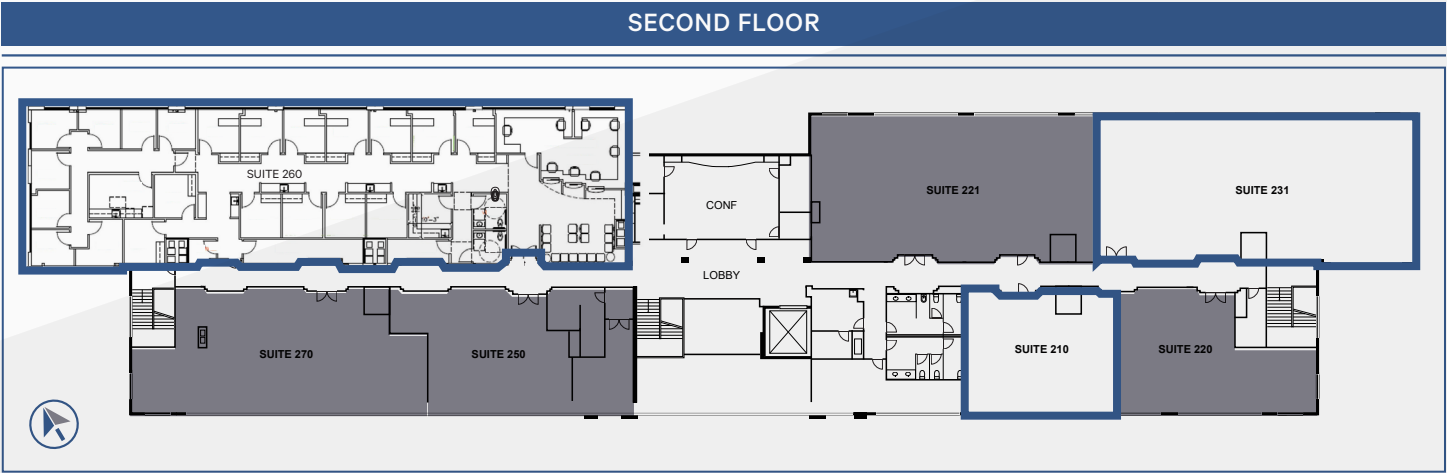
- ❖ Premier Medical Center located in the Heart of Evergreen District
- ❖ Multi-suite building
- ❖ Conveniently located next to Capitol Expressway
- ❖ Within walking distance to Eastridge Shopping Center
- ❖ Easy access to Highway 101, I-680 and I-280

- ❖ Building is solar-powered and equipped with emergency generator
- ❖ On-site parking for up to 144 vehicles
- ❖ Elevator Served
- ❖ Build-to-Suit Suites Available

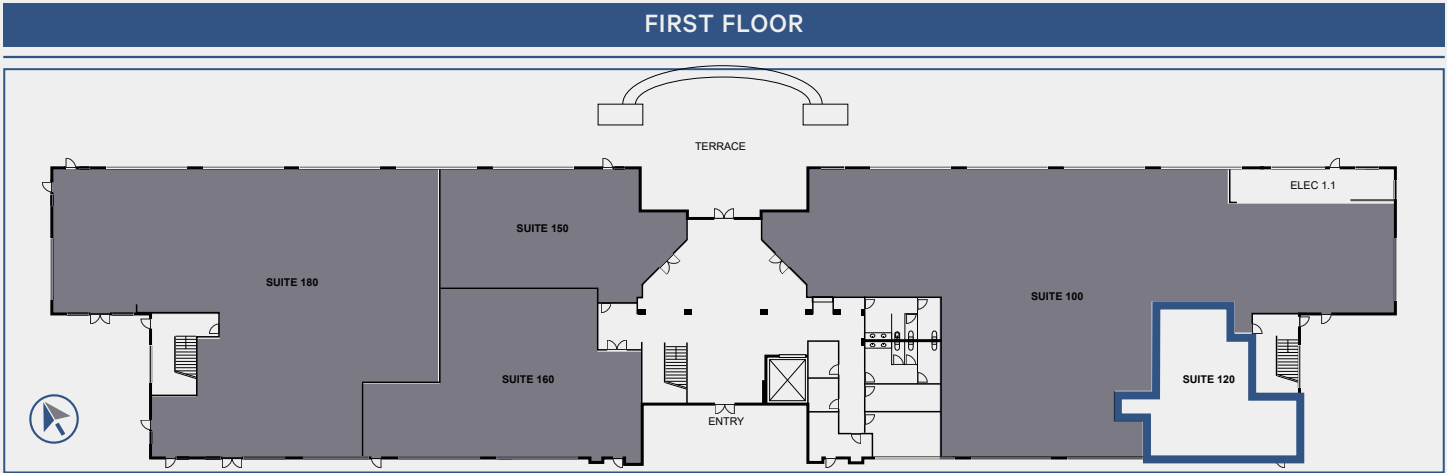
AVAILABLE SUITES



SUITE	SIZE AVAILABLE
260	5,796 SF*
231	3,071 SF
210	1,265 SF

*Divisible



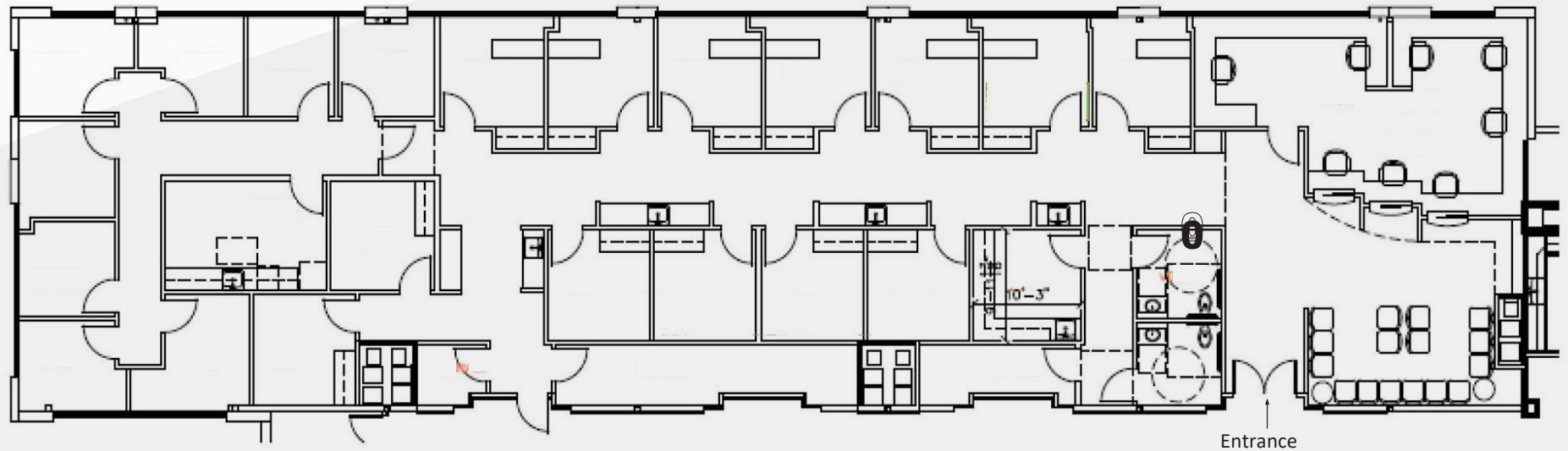
SUITE	SIZE AVAILABLE
120	1,265 SF



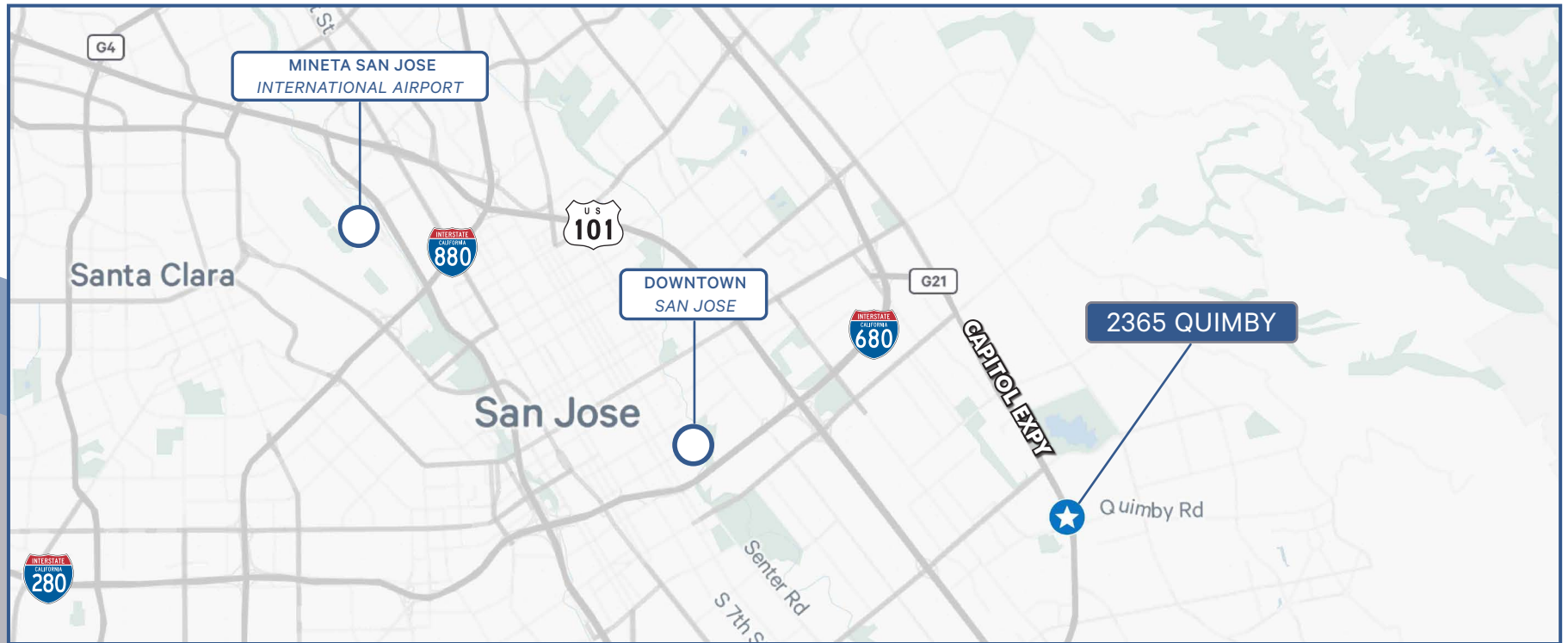
-  AVAILABLE
-  LEASED

SUITE 260 FLOOR PLAN

5,796 SF (Divisible)



NOT TO SCALE



CONTACT US:

THOR WILES

VICE PRESIDENT

THOR.WILES@CBRE.COM

+1 408 453 7478

LIC. 01237980

PAUL LYLES

FIRST VICE PRESIDENT

PAUL.LYLES@CBRE.COM

+1 408 453 7443

LIC. 01236021

© 2025 CBRE, Inc. All rights reserved. This information has been obtained from sources believed reliable but has not been verified for accuracy or completeness. CBRE, Inc. makes no guarantee, representation or warranty and accepts no responsibility or liability as to the accuracy, completeness, or reliability of the information contained herein. You should conduct a careful, independent investigation of the property and verify all information. Any reliance on this information is solely at your own risk. CBRE and the CBRE logo are service marks of CBRE, Inc. All other marks displayed on this document are the property of their respective owners, and the use of such marks does not imply any affiliation with or endorsement of CBRE. Photos herein are the property of their respective owners. Use of these images without the express written consent of the owner is prohibited.