

8.35 Acre Development Site

12400 SW 248 st, Homestead, FL 33032



FOR MORE INFORMATION, PLEASE CONTACT:

Alex Wiegandt

Asst Mgr. Commercial Leasing And Sales

P: 305.772.0751

| alwiegandt@aol.com

Keyes Commercial

Keyes Commercial Miami
2121 SW 3rd Ave, 3rd floor
Miami, FL 33129

P:
www.keyescommercial.com

8.35 ACRE DEVELOPMENT SITE



Executive Summary



OFFERING SUMMARY

Sale Price:	\$9,400,000
Available SF:	
Lot Size:	8.35 Acres
Price / Acre:	\$1,125,749
Zoning:	Agricultural
Market:	Homestead
Submarket:	Princeton

PROPERTY OVERVIEW

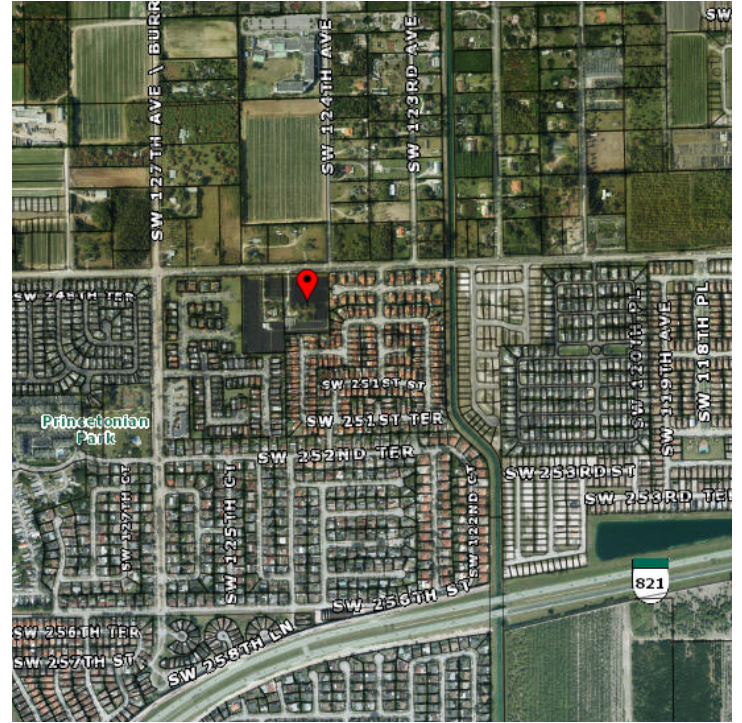
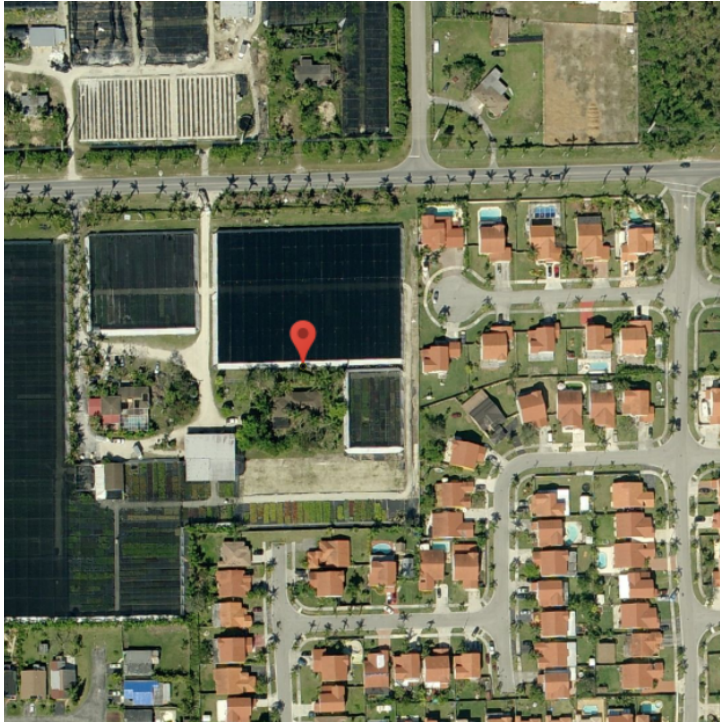
8 Acres inside the Urban Boundary
Suitable for mixed use development
Operating as a nursery

PROPERTY HIGHLIGHTS

- Close to Florida Turnpike
- 8 Acres inside UDB
- New Sommerset school across the street

8.35 ACRE DEVELOPMENT SITE

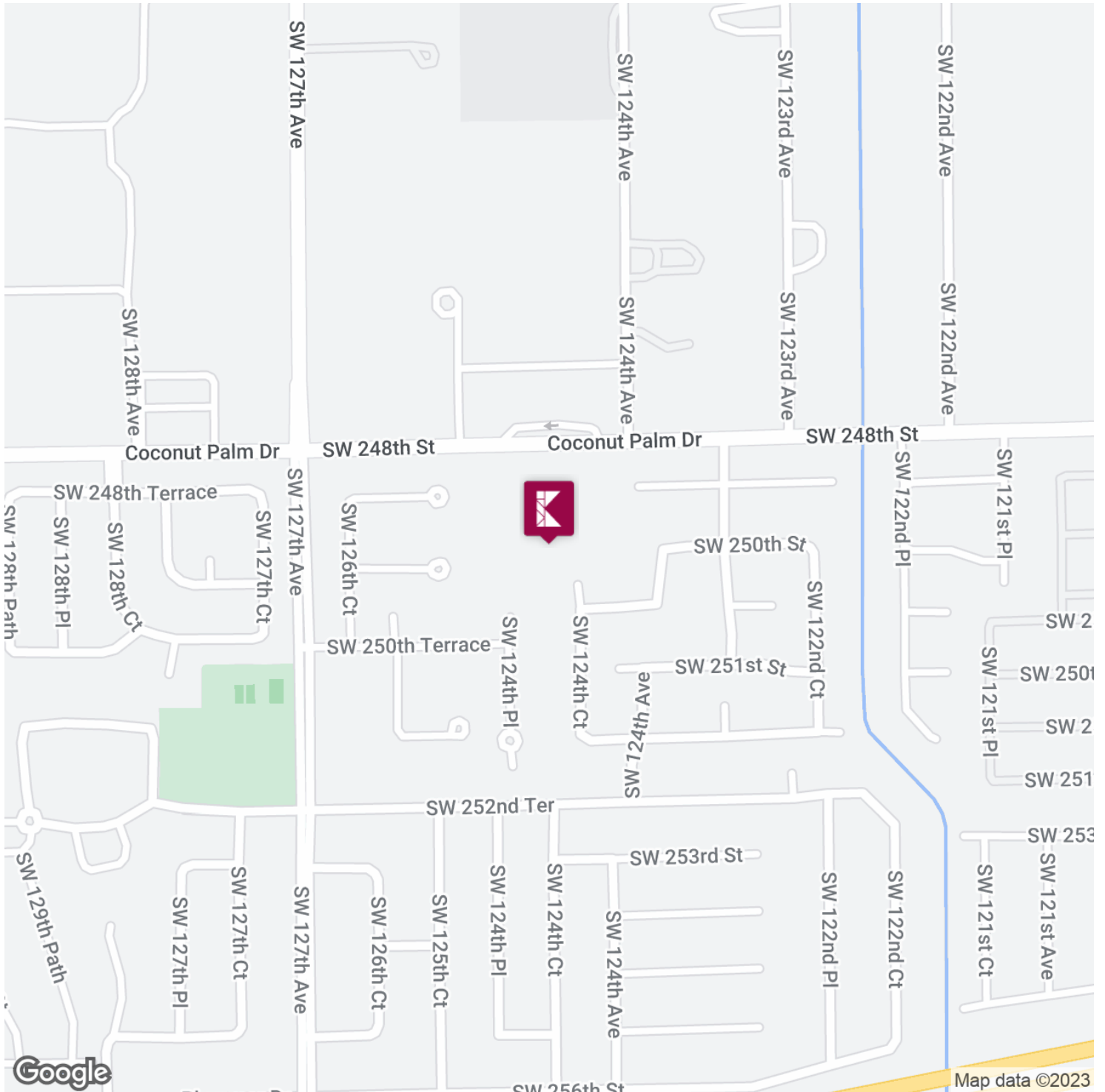
Additional Photos



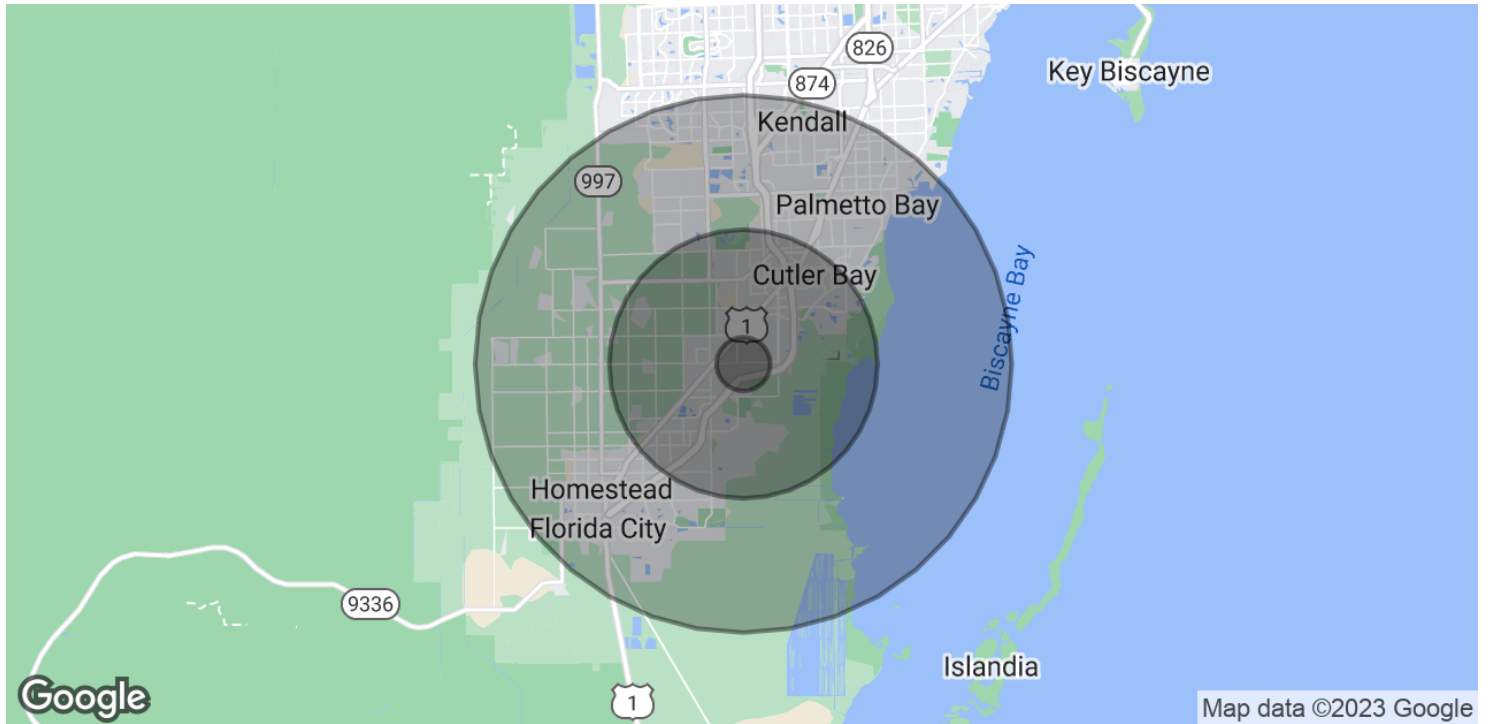
8.35 ACRE DEVELOPMENT SITE



Location Map



Demographics Map & Report



POPULATION

	1 MILE	5 MILES	10 MILES
Total Population	5,515	142,105	413,711
Average Age	31.0	31.8	33.9
Average Age (Male)	30.1	30.4	32.7
Average Age (Female)	32.8	32.4	34.6

HOUSEHOLDS & INCOME

	1 MILE	5 MILES	10 MILES
Total Households	1,471	41,772	123,909
# of Persons per HH	3.7	3.4	3.3
Average HH Income	\$64,384	\$56,174	\$68,905
Average House Value		\$257,443	\$337,424

* Demographic data derived from 2020 ACS - US Census