



## **3551 42nd Ave S**

3551 42nd Ave S, Saint Petersburg, FL 33711

**Zohair Ghadiali**

NZG Associates

2769 Seabreeze Dr, Saint Petersburg, FL 33707

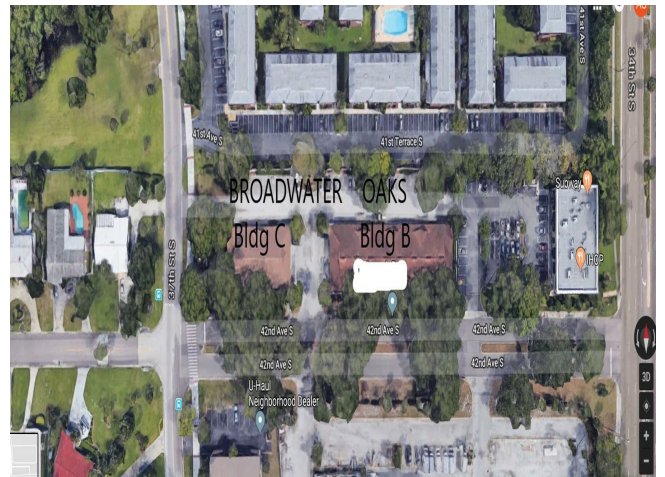
[zoher52@gmail.com](mailto:zoher52@gmail.com)

(813) 421-5152



# 3551 42nd Ave S

\$20.00 /SF/YR



Rental Rate:	\$20.00 /SF/YR
Min. Divisible:	1,150 SF
Property Type:	Office
Building Class:	C
Rentable Building Area:	13,800 SF
Year Built:	1983
Walk Score ®:	44 (Car-Dependent)
Transit Score ®:	32 (Some Transit)
Rental Rate Mo:	\$1.67 /SF/MO

### 1st Floor Ste B101-108

Space Available	2,300 - 9,200 SF
Rental Rate	\$20.00 /SF/YR
Date Available	Now
Service Type	Triple Net (NNN)
Built Out As	Standard Office
Space Type	Relet
Space Use	Office
Lease Term	3 - 5 Years

8 units, each 1150 sq ft can be contiguous. Interior walls are removable. Previous tenants were daycare center, medical office

1

### 1st Floor Ste C102

Space Available	1,150 SF
Rental Rate	\$20.00 /SF/YR
Date Available	Now
Service Type	Triple Net (NNN)
Built Out As	Standard Office
Space Type	Relet
Space Use	Office
Lease Term	3 - 5 Years

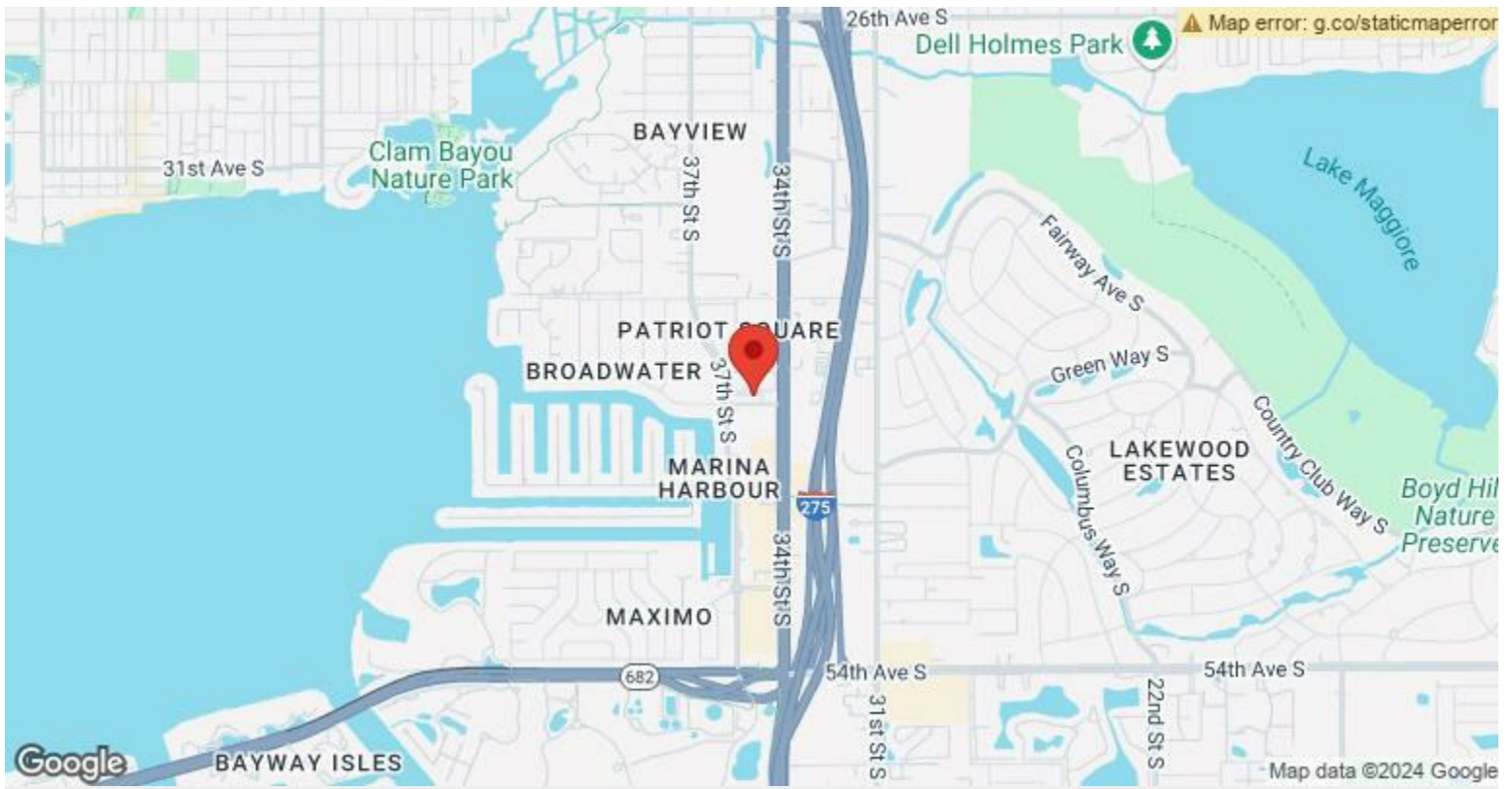
2

---

## Major Tenant Information

---

Tenant	SF Occupied	Lease Expired
Caribbean Festival Association Inc.	-	



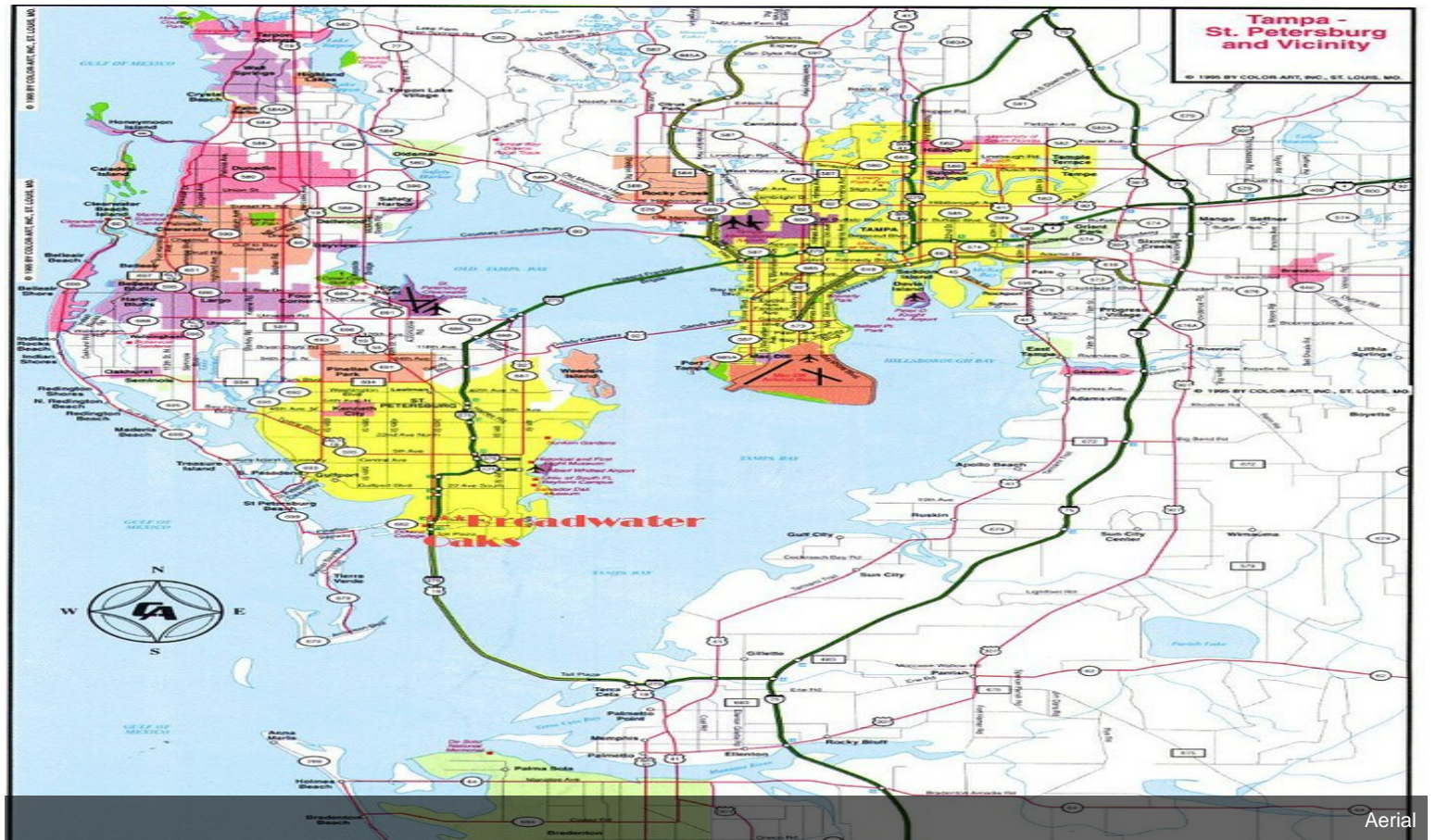
3551 42nd Ave S, Saint Petersburg, FL 33711



# Property Photos



Building Photo



Aerial