

FOR SALE

DOWNTOWN CARY INVESTMENT OPPORTUNITY

8390 & 8360 Chapel Hill Road | Cary, NC 27513



NIKITA ZHITOV
919.888.1285
nikita@cityplat.com

BROOKE DENTON
919.888.1295
brooke@cityplat.com

CITYPLAT
COMMERCIAL REAL ESTATE

8390 & 8360 CHAPEL HILL ROAD

Cary, NC 27513

FOR SALE

TABLE OF CONTENTS

3 | Property Summary

4 | Additional Photos

5 | Site Plans

7 | Survey

8 | Location

9 | Market Overview

10 | Demographics



NIKITA ZHITOV

|919.888.1285 | nikita@cityplat.com

BROOKE DENTON

|919.888.1285 | brooke@cityplat.com

CITYPLAT
COMMERCIAL REAL ESTATE

PROPERTY OVERVIEW

8390 & 8360 Chapel Hill Rd | Cary, NC 27513

FOR SALE



PROPERTY DESCRIPTION

Positioned at the intersection of N Academy Street and Chapel Hill Road, this property offers prime visibility and accessibility, ideal for a wide range of development projects. Nestled in the heart of Cary's bustling downtown area, it is surrounded by a vibrant mix of commercial, retail, and residential properties, presenting a wealth of potential for savvy investors. With Cary experiencing rapid growth and robust economic development, this property stands at the epicenter of high demand for both commercial and residential spaces, promising significant returns on investment. Its strategic location in a rapidly expanding urban environment solidifies this property as a compelling opportunity in the dynamic Cary real estate market.

OFFERING SUMMARY

Sale Price:	\$1,995,000
Lot Size:	2.57 Acres

PROPERTY HIGHLIGHTS

- **Prime Location:** Situated near the intersection of N Academy Street and Chapel Hill Road, offering high visibility and accessibility.
- **Downtown Cary:** Located in the heart of Cary's vibrant downtown area, surrounded by a mix of commercial, retail, and residential properties.
- **Growth Area:** Cary is one of the fastest-growing towns in North Carolina, offering robust economic growth and development opportunities.
- **High Demand:** Increasing demand for commercial and residential spaces due to the expanding population and business environment.
- **ROI:** Potential for high returns on investment due to strategic location and ongoing development projects in Downtown Cary.

NIKITA ZHITOV

|919.888.1285 | nikita@cityplat.com

BROOKE DENTON

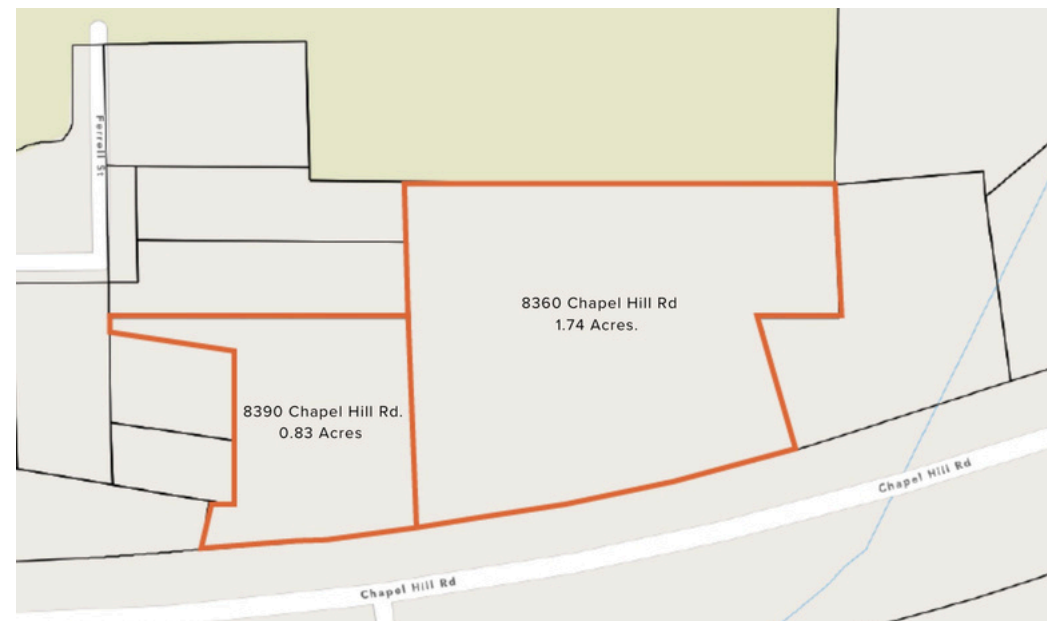
|919.888.1285 | brooke@cityplat.com



PHOTOS

8390 & 8360 Chapel Hill Rd | Cary, NC 27513

FOR SALE



NIKITA ZHITOV
|919.888.1285 | nikita@cityplat.com

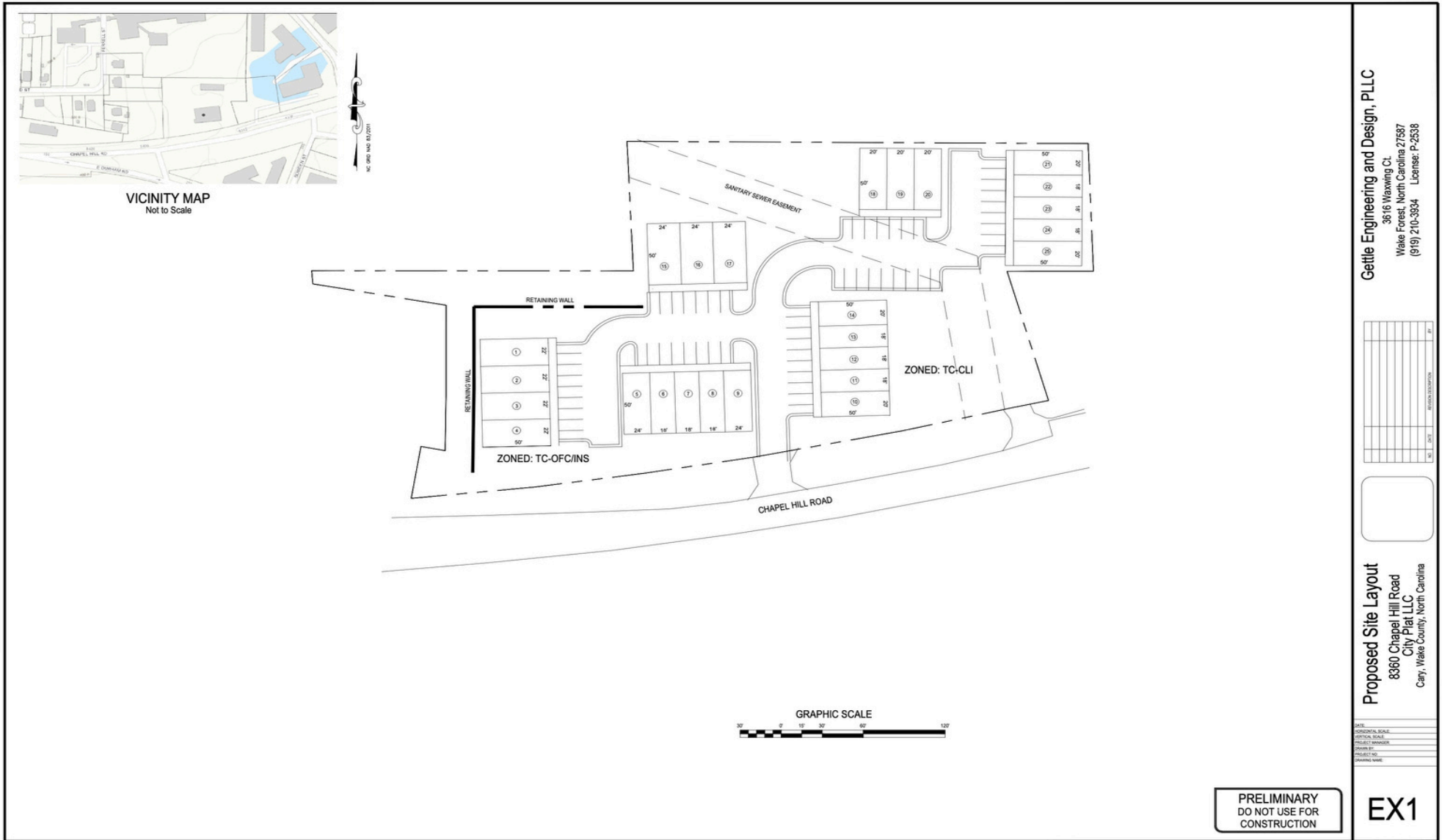
BROOKE DENTON
|919.888.1285 | brooke@cityplat.com



SITE PLAN

8390 & 8360 Chapel Hill Rd | Cary, NC 27513

LAND FOR SALE



Gettle Engineering and Design, PLLC

3816 Wawing Ct.
Wake Forest, North Carolina 27587
(919) 210-3934 License: P-2538

Proposed Site Layout

8360 Chapel Hill Road
City Plat LLC
Cary, Wake County, North Carolina

DATE:	
PREPARED BY:	
DESIGNED BY:	
PROJECT NUMBER:	
OWNER:	
PROJECT NO.:	
DATE PLOTTED:	

PRELIMINARY
DO NOT USE FOR
CONSTRUCTION

EX1

NIKITA ZHITOV
|919.888.1285 | nikita@cityplat.com

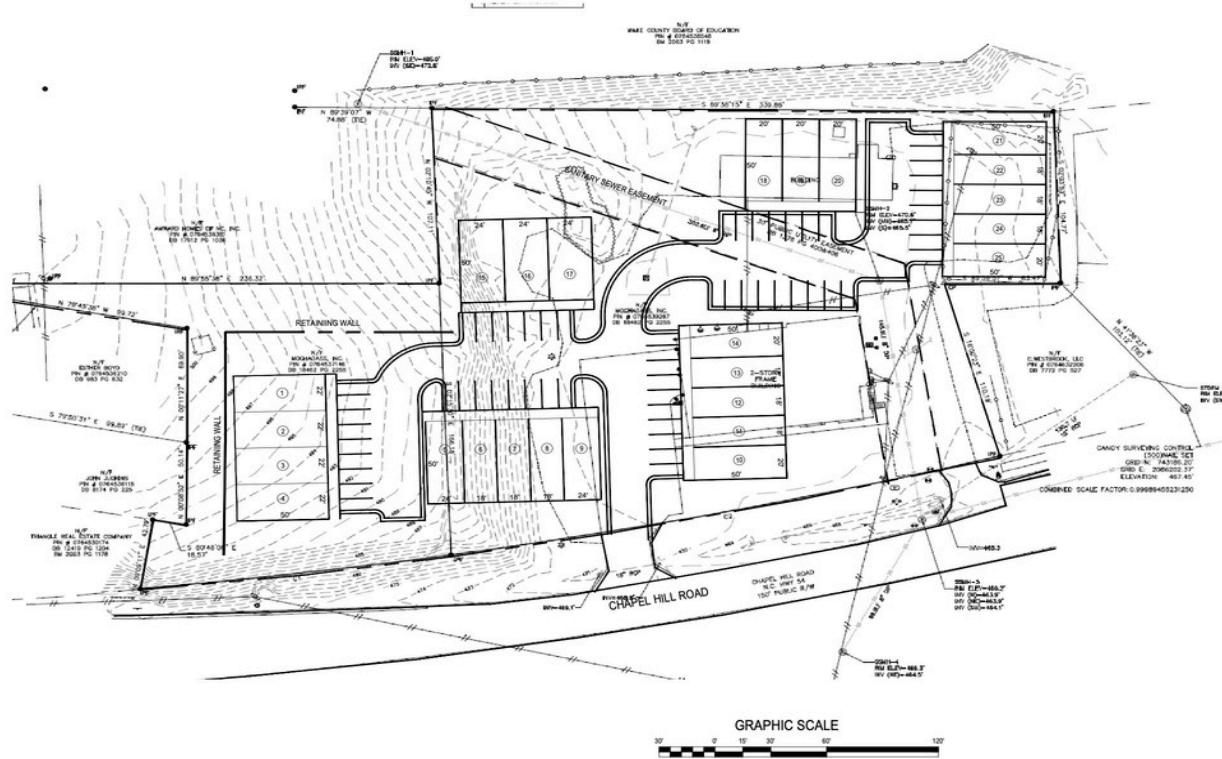
BROOKE DENTON
|919.888.1285 | brooke@cityplat.com



SITE PLAN

8390 & 8360 Chapel Hill Rd | Cary, NC 27513

LAND FOR SALE



NOTES

1. SURVEY PROVIDED BY CANDY SURVEYING, 1154 SHONKLE LANE, STEM NC 27581, TITLED SURVEY FOR SKYECROFT PROPERTIES, DATED APRIL 18, 2022.

Gettle Engineering and Design, PLLC
3616 Waxwing Ct.
Wake Forest, North Carolina 27587
(919) 210-3934 License: P-4538

Proposed Site Layout
8360 Chapel Hill Road
City Plat LLC
Cary, Wake County, North Carolina

DATE:	
PERSONAL SCALE:	
GRAPHIC SCALE:	
PROJECT NUMBER:	
OWNER:	
PROJECT NO.:	
DATE PLOTTED:	

**PRELIMINARY
DO NOT USE FOR
CONSTRUCTION**

EX2

NIKITA ZHITOV
|919.888.1285 | nikita@cityplat.com

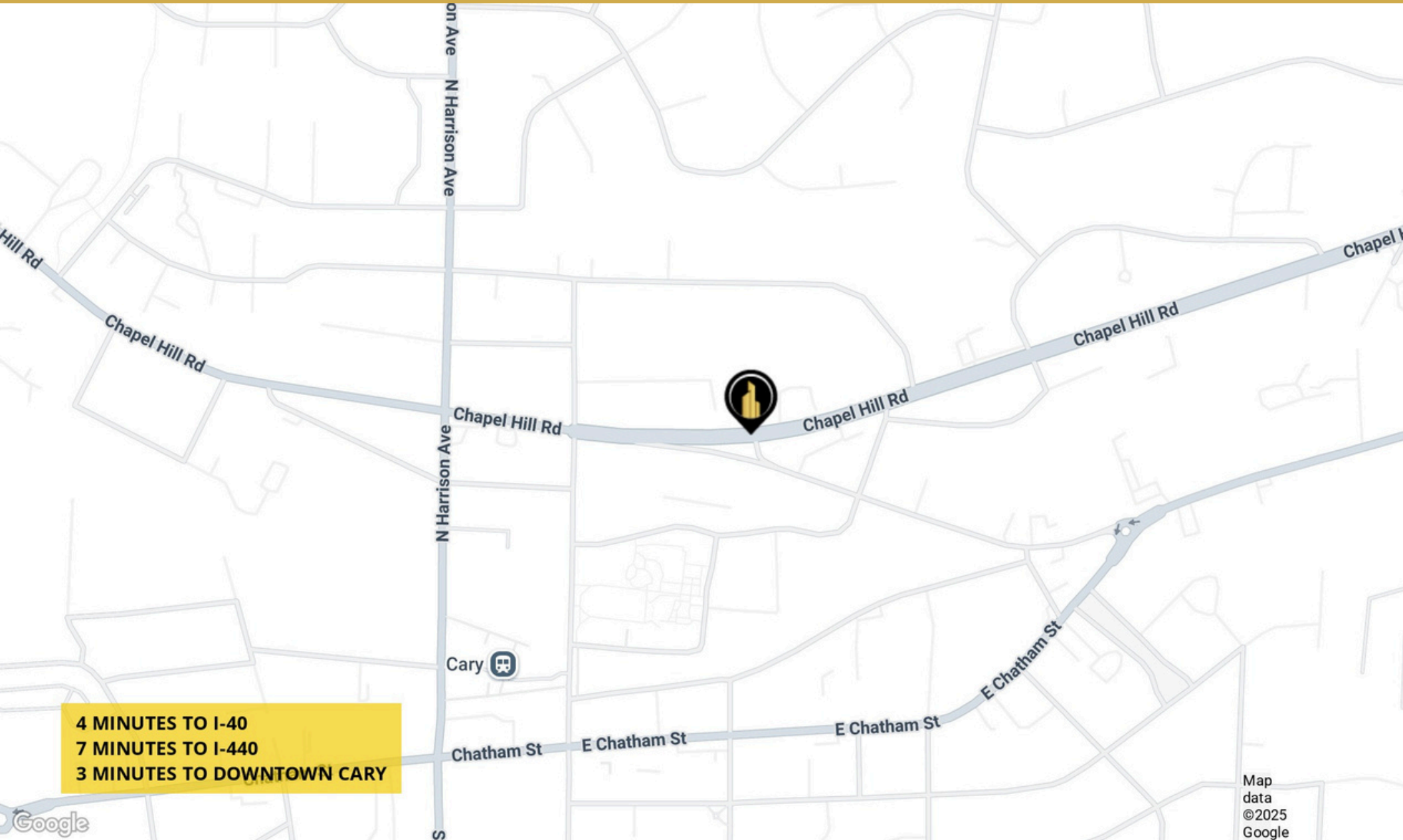
BROOKE DENTON
|919.888.1285 | brooke@cityplat.com



LOCATION MAP

8390 & 8360 Chapel Hill Rd | Cary, NC 27513

FOR SALE



4 MINUTES TO I-40
7 MINUTES TO I-440
3 MINUTES TO DOWNTOWN CARY

NIKITA ZHITOV
|919.888.1285 | nikita@cityplat.com

BROOKE DENTON
|919.888.1285 | brooke@cityplat.com

CITYPLAT
COMMERCIAL REAL ESTATE

MARKET OVERVIEW

8390 & 8360 Chapel Hill Rd | Cary, NC 27513

FOR SALE



MARKET OVERVIEW - CARY, NC

Cary, NC is one of the most rapidly growing towns in the state, driven by a robust economy and a high quality of life that attracts both businesses and residents. Strategically located in the Research Triangle area, Cary benefits from proximity to major cities like Raleigh and Durham, as well as renowned research institutions and universities. This prime location has spurred significant development, with an influx of technology companies, startups, and large corporations establishing a presence in the area. The town's strong job market, low unemployment rate, and high median household income contribute to a stable and thriving economic environment.

The real estate market in Cary is equally dynamic, characterized by rising property values and high demand for both residential and commercial spaces. The town's commitment to maintaining a balanced growth approach ensures a mix of urban amenities and green spaces, making it a desirable location for families, professionals, and retirees. With ongoing infrastructure improvements and various development incentives provided by the local government, Cary offers lucrative opportunities for investors. Whether it's for developing new commercial projects or revitalizing existing properties, the market conditions in Cary present a promising landscape for sustainable growth and profitability.



NIKITA ZHITOV
|919.888.1285 | nikita@cityplat.com

BROOKE DENTON
|919.888.1285 | brooke@cityplat.com

CITYPLAT
COMMERCIAL REAL ESTATE

DEMOGRAPHICS

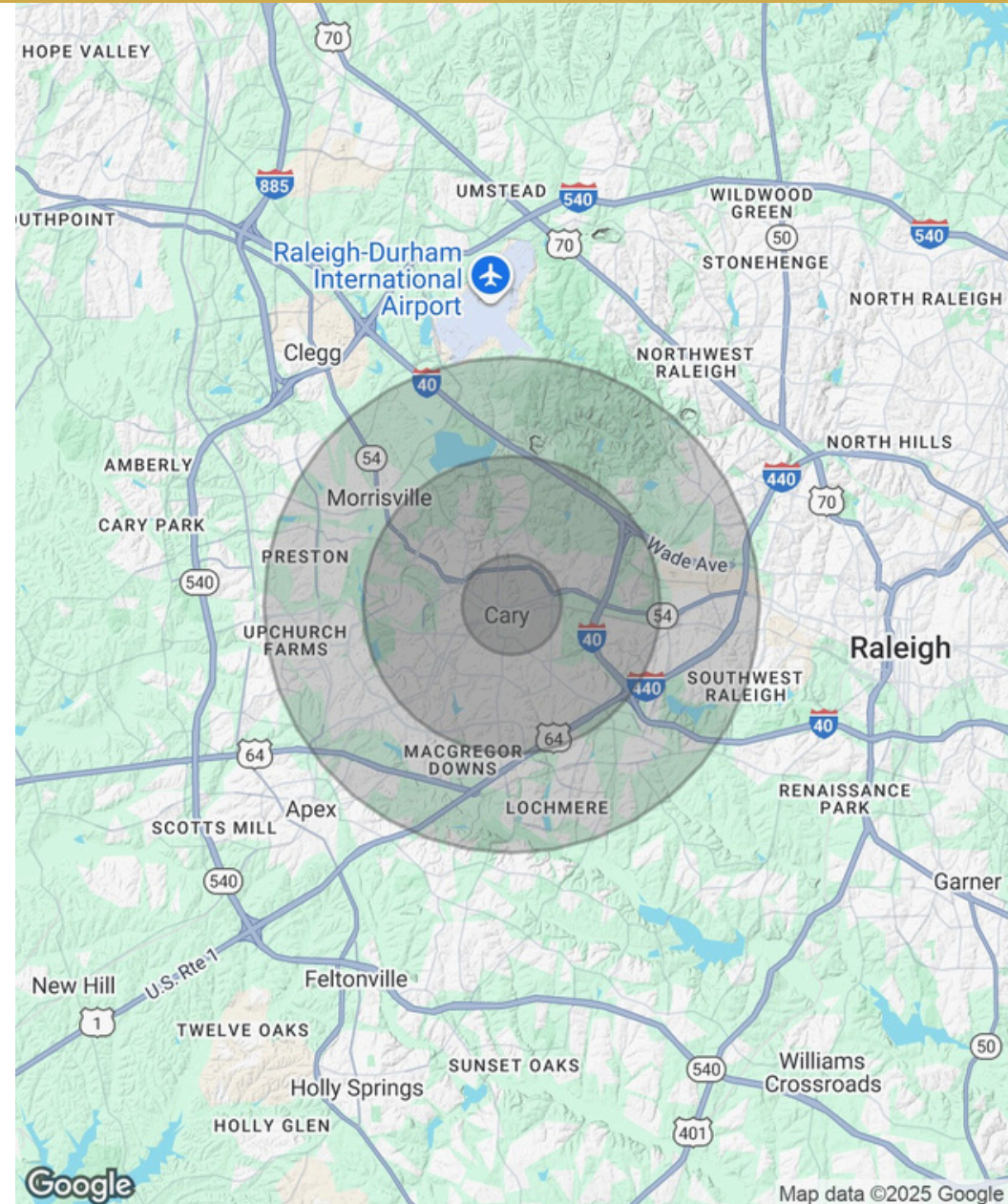
8390 & 8360 Chapel Hill Rd | Cary, NC 27513

FOR SALE

POPULATION	1 MILE	3 MILES	5 MILES
Total Population	12,857	84,606	177,912
Average Age	38	40	39
Average Age (Male)	37	39	38
Average Age (Female)	39	41	40

HOUSEHOLDS & INCOME	1 MILE	3 MILES	5 MILES
Total Households	5,191	36,819	74,473
# of Persons per HH	2.5	2.3	2.4
Average HH Income	\$112,717	\$135,515	\$148,575
Average House Value	\$420,291	\$512,145	\$553,395

Demographics data derived from AlphaMap



NIKITA ZHITOV
|919.888.1285 | nikita@cityplat.com

BROOKE DENTON
|919.888.1285 | brooke@cityplat.com

CITYPLAT
COMMERCIAL REAL ESTATE

8390 & 8360 CHAPEL HILL ROAD

Cary, NC 27513

FOR SALE

CONFIDENTIALITY DISCLAIMER

The information contained in this Offering Memorandum is proprietary and strictly confidential. It is intended to be reviewed only by the party(ies) receiving it from CityPlat Brokerage, LLC and should not be made available to any other person or entity without the written consent of CityPlat Brokerage, LLC. If you are not the intended recipient, you are hereby notified that any retention, dissemination, duplication, forwarding, copying or taking any action in reliance on the contents of this information is strictly prohibited. If you receive this Offering Memorandum in error, whether in electronic or printed form, please notify the sender and destroy the document. This Offering has been prepared to provide a summary of unverified information to prospective purchasers, and to establish only a preliminary level of interest in the subject property. The information contained herein is not a substitute for a thorough due diligence investigation. CityPlat Brokerage, LLC has not made any investigation, and makes no warranty or representation, with respect to the income or expenses for the subject property, the future projected financial performance of the property, the size and square footage of the property and improvements, the presence or absence of contaminating substances, PCB's or asbestos, the compliance with state and federal regulations, the physical condition of the improvements thereon, or the financial condition or business prospects of any tenant, or any tenant's plans or intentions to continue its occupancy of the subject property. The information contained in this Offering has been obtained from sources we believe are reliable; however, CityPlat Brokerage, LLC has not verified, and will not verify, any of the information contained herein, nor has CityPlat Brokerage, LLC conducted any investigation regarding these matters and makes no warranty or representation whatsoever regarding the accuracy or completeness of the information provided.

NIKITA ZHITOV

919.888.1285 | nikita@cityplat.com

BROOKE DENTON

919.888.1285 | brooke@cityplat.com

