

FOR SALE

HARD CORNER LAND

NE 63RD

& MARTIN LUTHER KING BLVD

City, ST 98765

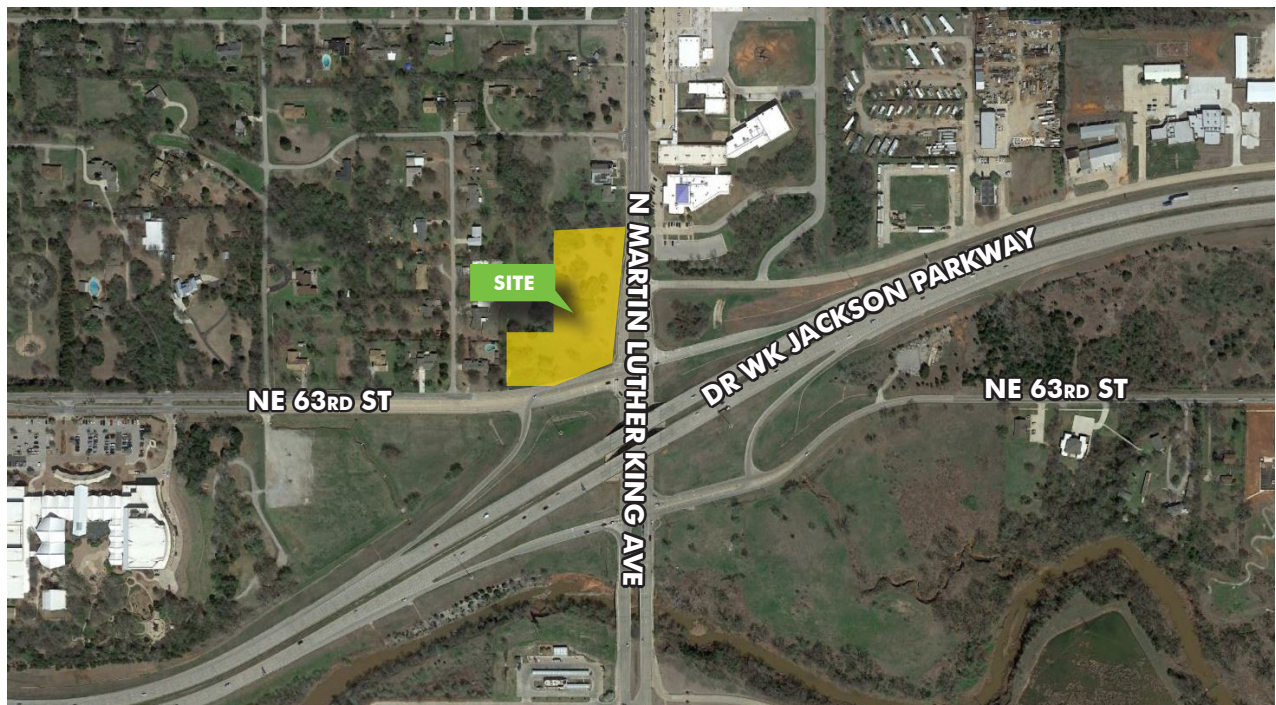


PROPERTY FEATURES

- + Acres: $\pm 4.42^*$
- + Frontage: 407' on MLK and 503' on NE 63rd
- + Zoning: R-1 with potential to rezone for commercial use
- + Location: North entrance to OKC Adventure District

+ 54,400 vehicles per day along I-44

ASKING PRICE: **\$1,050,000.00 | \$5.45 PSF**



*Source: Owner Record

www.cbre.com/oklahomacity

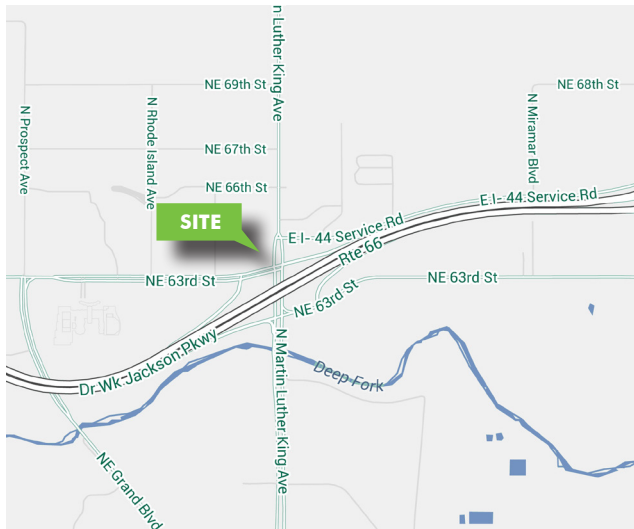
CBRE

FOR SALE HARD CORNER LAND

NE 63RD &
MARTIN LUTHER KING BLVD
Oklahoma City, OK 73111



Map
& Aerial



CONTACT US

JOHN LENOCHAN, SIOR, CCIM

Senior Vice President
+1 405 607 6218
john.lenochan@cbre.com

JASON HAMMOCK

Senior Associate
+1 405 607 6012
jason.hammock@cbre.com

CAITLIN MAZAHERI

Associate
+1 405 607 6059
caitlin.mazaheri@cbre.com

© 2016 CBRE, Inc. This information has been obtained from sources believed reliable. We have not verified it and make no guarantee, warranty or representation about it. Any projections, opinions, assumptions or estimates used are for example only and do not represent the current or future performance of the property. You and your advisors should conduct a careful, independent investigation of the property to determine to your satisfaction the suitability of the property for your needs.

Photos herein are the property of their respective owners and use of these images without the express written consent of the owner is prohibited.

www.cbre.com/oklahomacity

CBRE