



N BUCKNER ST & W PATRIOT AVE

North Buckner Street

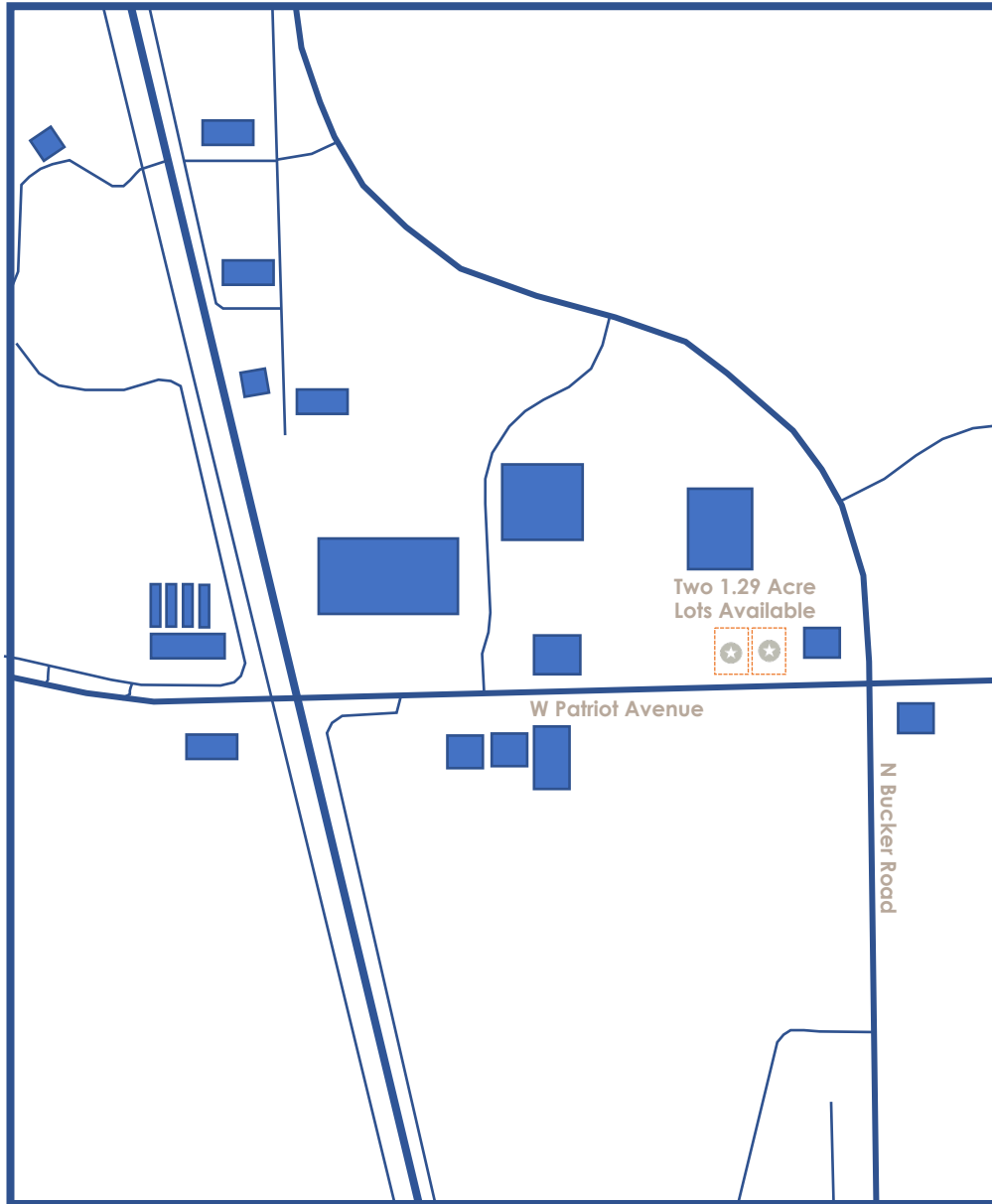
Land For Sale

Asking Price: \$561,924

1.29 Acre Parcel

Derby, Kansas

Site Overview



Located near the corner of N Bucker Street and W Patriot Avenue in Derby, Kansas. Zoned B-3 General Business District. The properties are located near existing national retail, a Kohl's department store and a Lowe's home store along a heavily traveled corridor. This makes the W Patriot Avenue frontage ideal for retail. A wide variety of uses including office/flex, medical, retail are desired and will compliment the surrounding neighbors.

1.29 Acre Lots

Office | Retail | Flex | Medical

B-3 General Business District

North Buckner Street and West
Patriot Avenue

Asking Price: \$561,924

Site Aerials



Site Aerials



Demographics

Area Profile



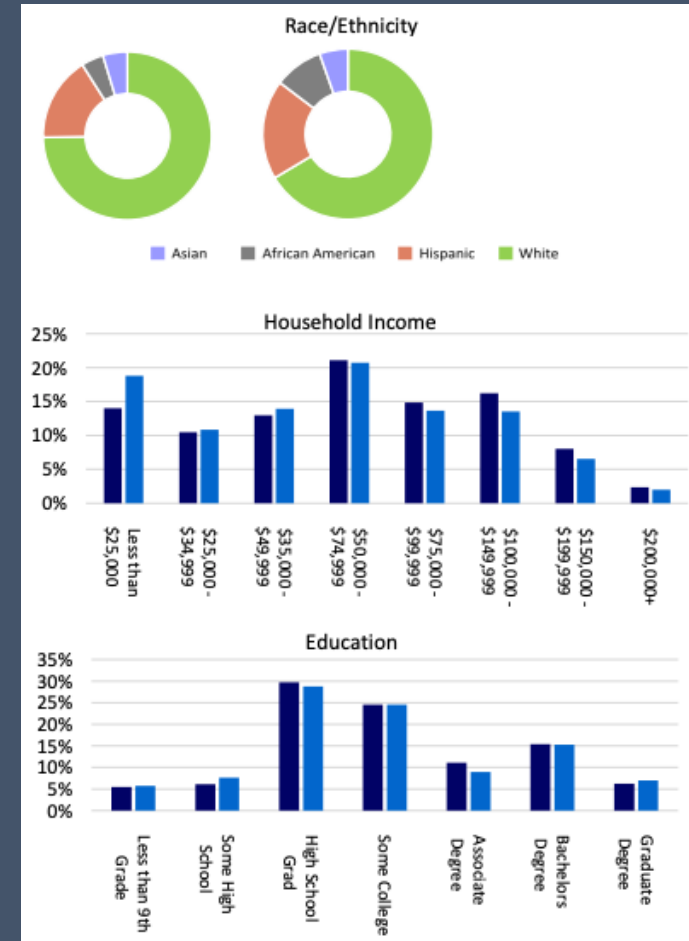
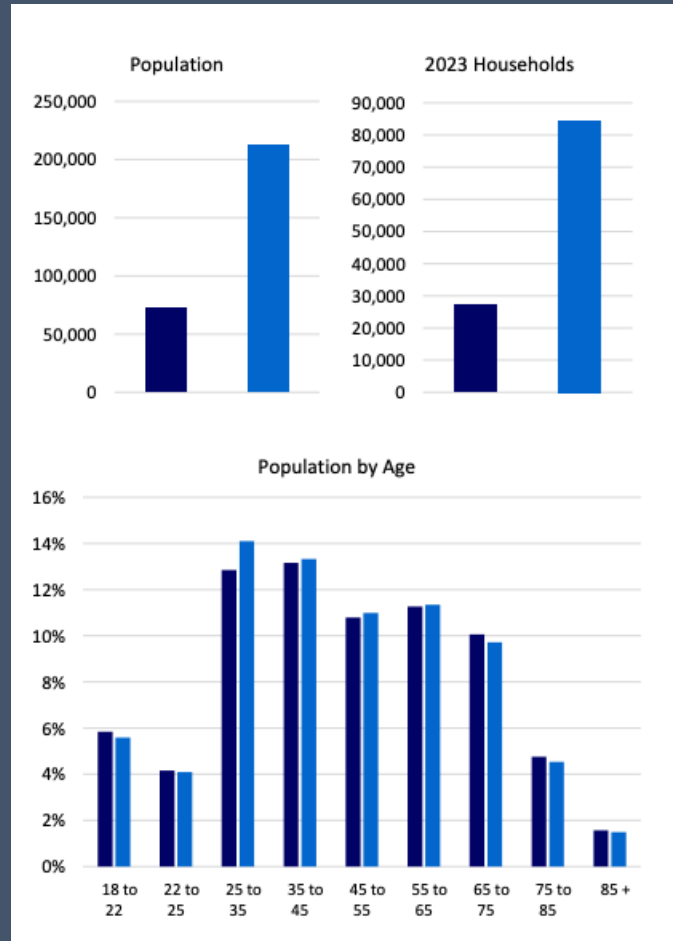
Population
72,157



Average Household Income
\$79,918



Average Age
38



Legend

- 5 Mile Radius
- 20 Minute Drive Time



N BUCKNER ST & W PATRIOT AVE

Looking for more info?

To request additional information on this property, or to submit an offer, [click here](#).