

1111
WHEELING ROAD
WHEELING, IL

**MAJOR RENOVATIONS
COMPLETED**
NEW OWNERSHIP!

YOUR
COMPANY HERE

±126,428 SF
(DIVISIBLE TO 31,223 SF)

INDUSTRIAL
MANUFACTURING &
WAREHOUSE FACILITY

**CLASS 6B
TAX INCENTIVE**



**CUSHMAN &
WAKEFIELD**

// PROPERTY HIGHLIGHTS



BUILDING SIZE

±126,428 SF
(DIVISIBLE TO 31,223 SF)



OFFICE SIZE

9,660 SF



SITE SIZE

6.6± ACRES



INTERIOR LOADING DOCKS

3



EXTERIOR LOADING DOCKS

2 (EXPANDABLE)



DRIVE-IN DOOR

2 (EXPANDABLE)



CLEAR HEIGHT

18'



PARKING

157 SPACES







YEAR BUILT

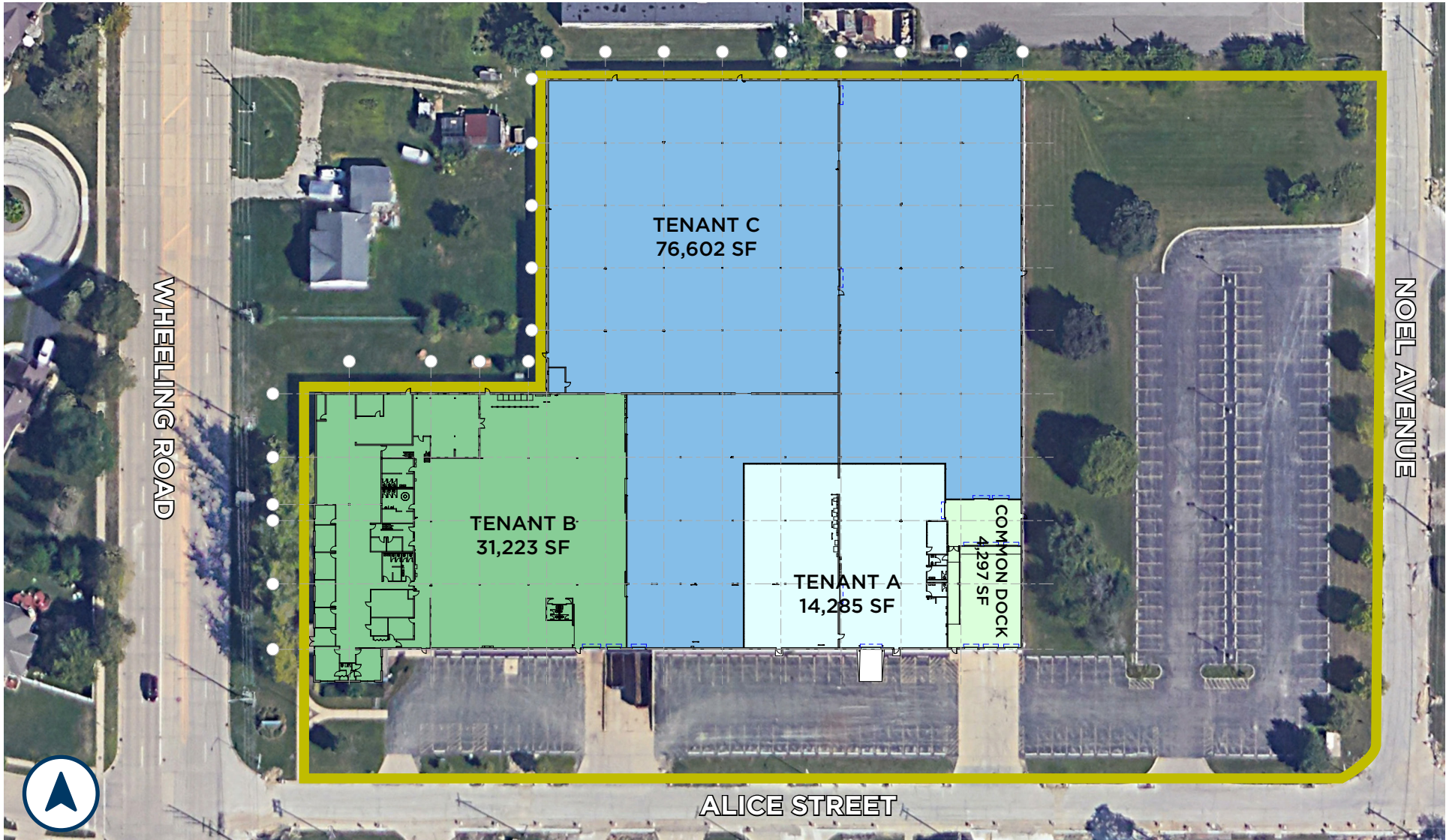
1968



// **1111 WHEELING ROAD**
Wheeling, IL

// SITE PLAN

	TENANT A 14,285 SF		TENANT B 31,223 SF		TENANT C 76,602 SF		COMMON DOCK 4,297 SF
--	-----------------------	---	-----------------------	--	-----------------------	---	-------------------------



1111 WHEELING ROAD



FOR MORE INFORMATION, PLEASE CONTACT:

STEVE STONE

Managing Director

+1 847 720 1364

steve.stone@cushwake.com

ERIC FISCHER

Executive Managing Director

+1 847 720 1369

eric.fischer@cushwake.com

KEITH PURITZ

Vice Chair

+1 847 720 1366

keith.puritz@cushwake.com



MARC SAMUELS

Director

+1 847 720 1368

marc.samuels@cushwake.com

©2023 Cushman & Wakefield. All rights reserved. The information contained in this communication is strictly confidential. This information has been obtained from sources believed to be reliable but has not been verified. NO WARRANTY OR REPRESENTATION, EXPRESS OR IMPLIED, IS MADE AS TO THE CONDITION OF THE PROPERTY (OR PROPERTIES) REFERENCED HEREIN OR AS TO THE ACCURACY OR COMPLETENESS OF THE INFORMATION CONTAINED HEREIN, AND SAME IS SUBMITTED SUBJECT TO ERRORS, OMISSIONS, CHANGE OF PRICE, RENTAL OR OTHER CONDITIONS, WITHDRAWAL WITHOUT NOTICE, AND TO ANY SPECIAL LISTING CONDITIONS IMPOSED BY THE PROPERTY OWNER(S). ANY PROJECTIONS, OPINIONS OR ESTIMATES ARE SUBJECT TO UNCERTAINTY AND DO NOT SIGNIFY CURRENT OR FUTURE PROPERTY PERFORMANCE.