



SANDY OFFICE/RETAIL FOR LEASE

8684-8686 SOUTH 1300 EAST, SANDY, UTAH 84094

**RATE REDUCTION!
FREE RENT AVAILABLE!**



PROPERTY INFORMATION

- Suite 100: 2,763 SF Office/Retail
- Private Entrance
- Office Furniture Available
- Signage Available
- Highly Visible on 1300 East
- Busy Location with Many Retail/Restaurant Amenities Nearby
- Easy Access to I-15

LEASE RATE REDUCED!

from ~~\$16.00/SF~~ to **\$14.00/SF FULL SERVICE**
FREE RENT AVAILABLE

DEMOGRAPHICS

	1 Mile	3 Mile	5 Mile
Population	17,508	142,685	279,981
Households	5,896	49,905	99,035
Avg. Household Income	\$83,539	\$75,088	\$77,758

TRAFFIC COUNTS

1300 East : 39,000 Annual Average Daily Traffic

8600 South: 15,000 Annual Average Daily Traffic

CONTACT

801.617.1700

GAVIN PERRYMAN

WEST HARADIN

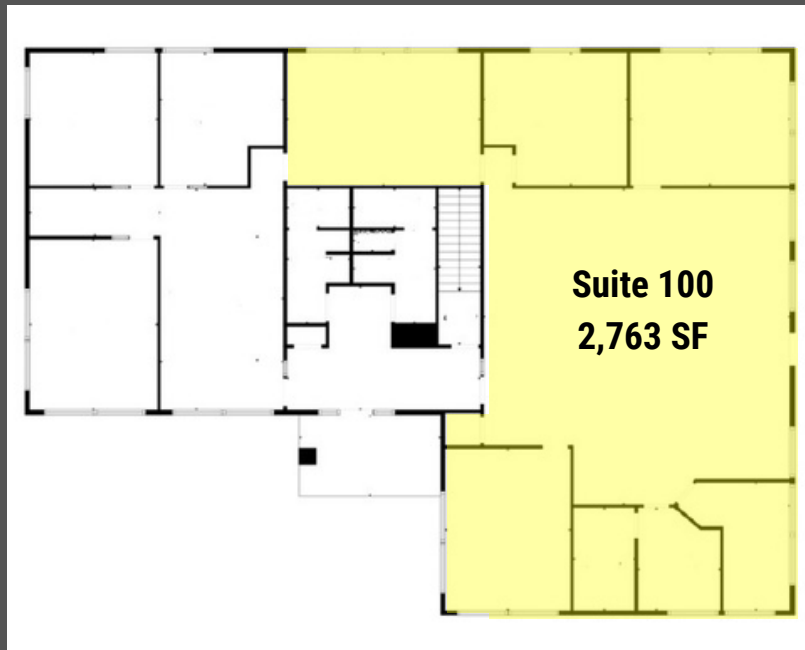
GAVIN.PERRYMAN@CRCNATIONWIDE.COM

WEST.HARADIN@CRCNATIONWIDE.COM



SANDY OFFICE/RETAIL FOR LEASE

8684-8686 SOUTH 1300 EAST, SANDY, UTAH 84094



Suite 100
2,763 SF



This information is given with the understanding that all negotiations and/or real estate activity related to the property described above shall be conducted through this cRc Nationwide office. The above information while not guaranteed, was obtained from sources we believe to be reliable.

CONTACT

801.617.1700

GAVIN PERRYMAN

WEST HARADIN

GAVIN.PERRYMAN@CRCNATIONWIDE.COM

WEST.HARADIN@CRCNATIONWIDE.COM