



Palm Court

2035-2041 N Main St, Santa Ana, CA 92706



Wally Courtney

Paul Kott Realtors, Inc.
1225 W Lincoln Ave, Anaheim, CA 92805
wtcourtney@aol.com
(714) 772-7000 Ext: 114



Palm Court

\$21.00 /SF/Yr

Multi-Tenant 2 story building with beautiful landscaping and courtyard. Includes the famous "Green Parrot" restaurant and is located across the street from the Bowers Museum!...



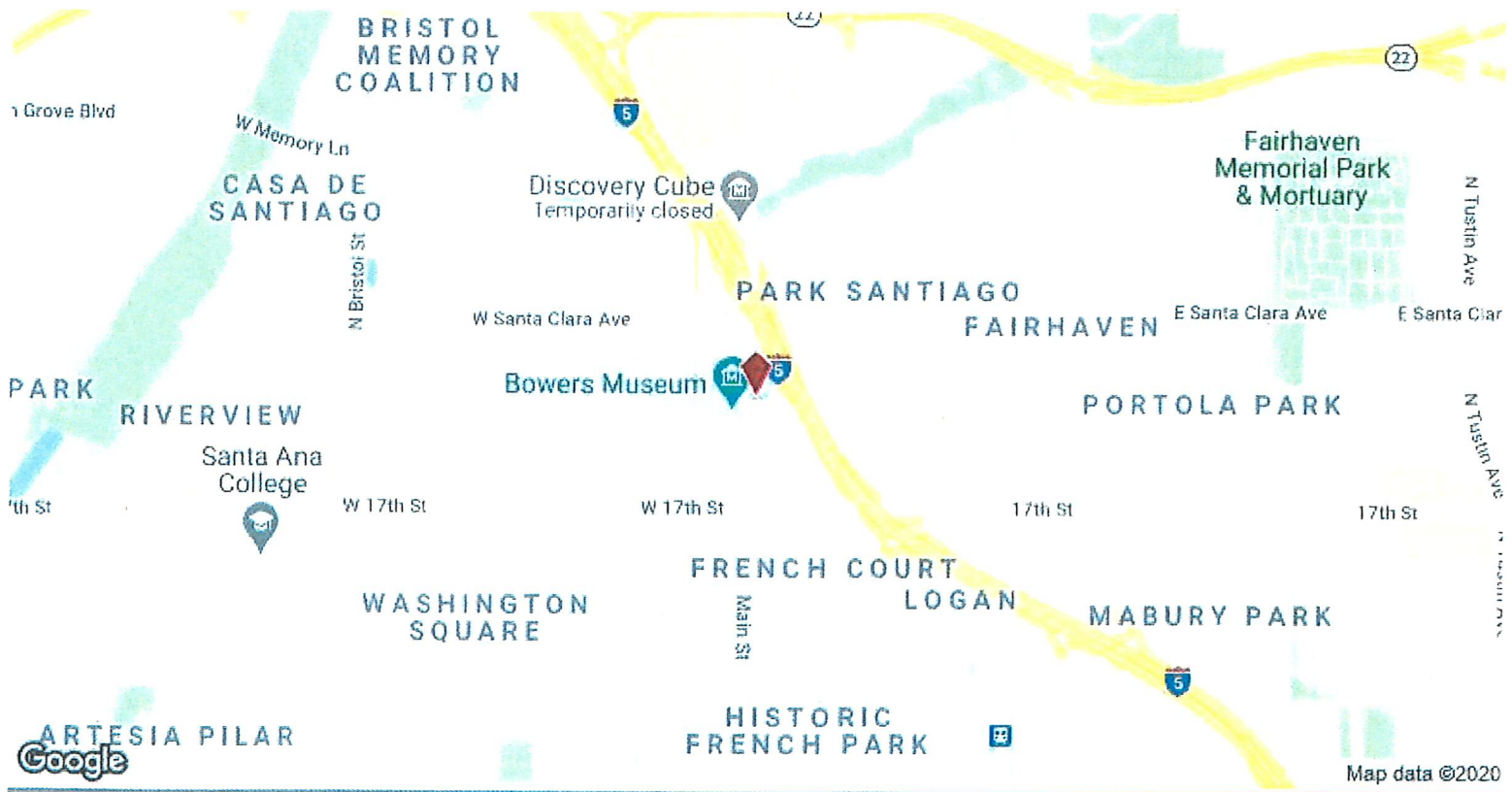
Rental Rate:	\$21.00 /SF/Yr
Property Type:	Office
Building Class:	B
Rentable Building Area:	19,022 SF
Year Built:	1931
Walk Score ®:	78 (Very Walkable)
Transit Score ®:	44 (Some Transit)
Rental Rate Mo:	\$1.75 USD/SF/Mo

2nd Floor Ste B

Space Available	1,300 SF
Rental Rate	\$21.00 /SF/Yr
Date Available	Now
Service Type	Modified Gross
Built Out As	Law Firm
Space Type	Relet
Space Use	Office
Lease Term	Negotiable

Former Law Offices-Recently renovated. Beautiful hardwood floors, private restroom, balcony overlooking courtyard. Second floor space (no elevator). Excellent downtown location across the street from the Bowers Museum and close to County offices and Courthouses!

1



2035-2041 N Main St, Santa Ana, CA 92706

Multi-Tenant 2 story building with beautiful landscaping and courtyard. Includes the famous "Green Parrot" restaurant and is located across the street from the Bowers Museum!

Property Photos



Building Photo



Building Photo

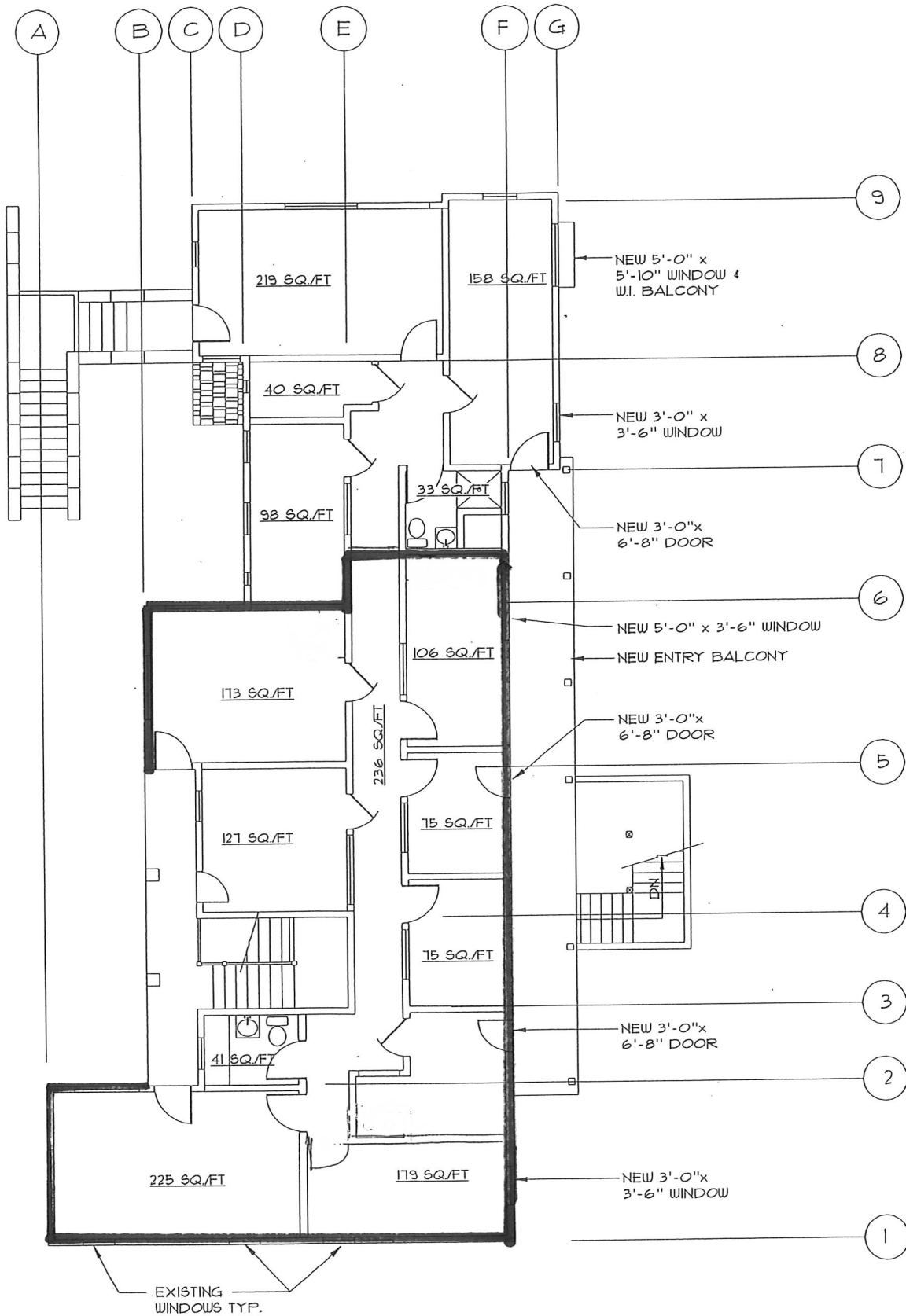
Property Photos



Building Photo



Building Photo



SECOND FLOOR PLAN