

Multiple Restaurant Pads Available

Oak Brook Commons

Oak Brook, IL 60523



Property Highlights

- + Multiple Restaurant Pads Available.
- + Fully signalized intersection along 22nd Street.
- + Excellent ingress and egress from multiple directions.
- + Significant visibility from both 22nd St. (33,800 ADT) and I-88 (187,000 ADT).
- + Direct Westbound I-88 access via Spring Road/ Route 83 North exit serving the Oak Brook submarket.
- + About 19 miles west of Downtown Chicago.
- + Located directly across Oakbrook Center Mall.
- + Located within the Oak Brook Commons mixed-use development. Restaurant occupants include Gibson's Bar & Steakhouse, Fogo De Chao, and Alter Brewery.
- + Oak Brook Commons is a mixed-use development consisting of 50,000 SF of retail, 320,000 SF of office space, 80,000 SF Northwestern Medical Office Building, 250 rental apartments, 104 condo units, 17.5 acres, 557 retail surface parking spaces, a planned future parking garage, and 2 traffic signals serving the project with 3 full-access points.
- + Located at the eastern (gateway) entrance to the Oak Brook Mall/office trade area of over 2 million square feet.



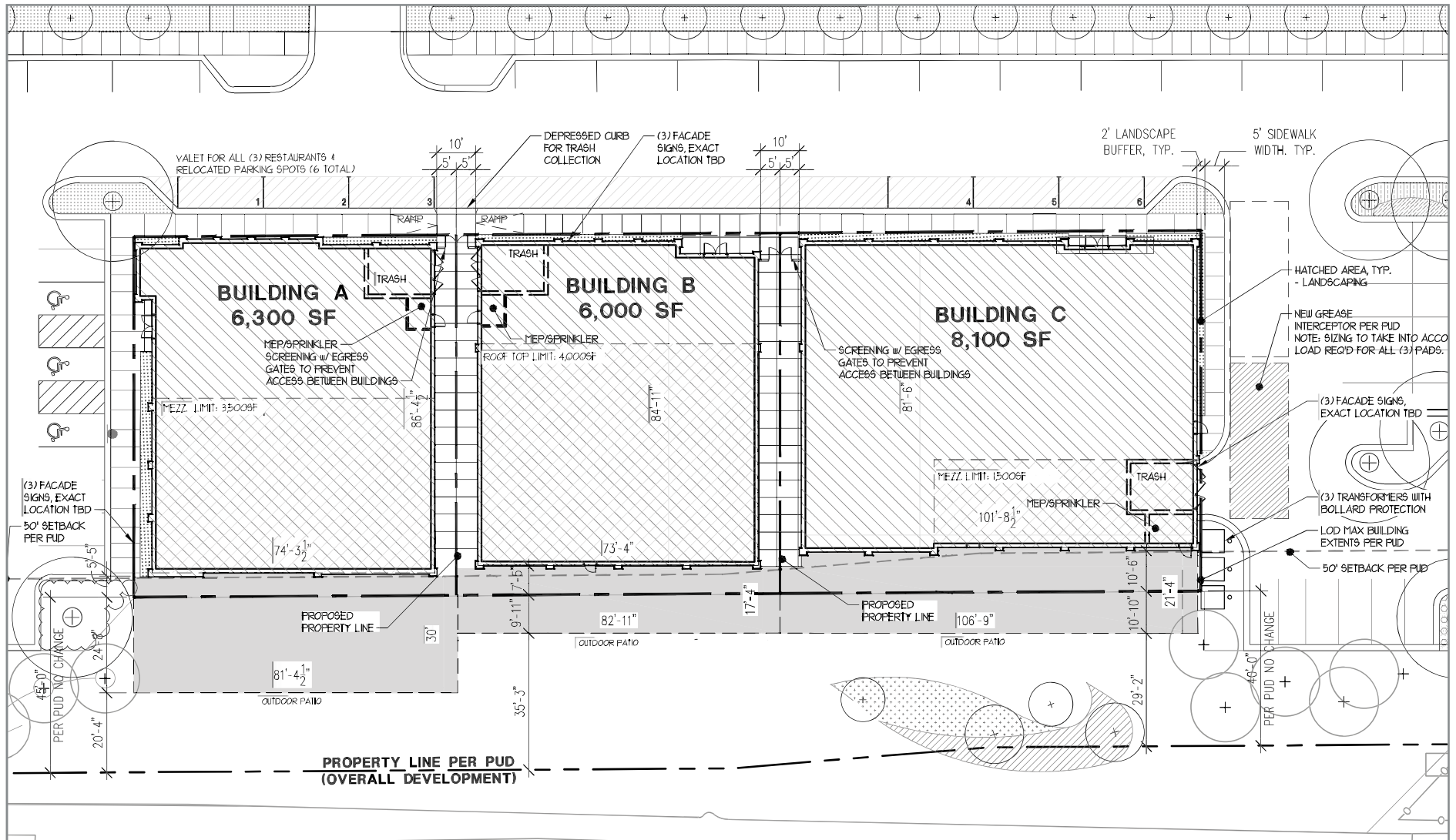
Demographics	1 Mile	3 Mile	5 Mile
Population	2,661	75,751	302,178
Average Household Income	\$137,096	\$160,987	\$155,739
Daytime Population	24,872	116,852	361,907
Employees	25,395	88,198	276,205

Traffic Count	
I-88	187,000 ADT
W 22nd St	33,800 ADT
Spring Rd	10,400 ADT

OVERALL SITE PLAN



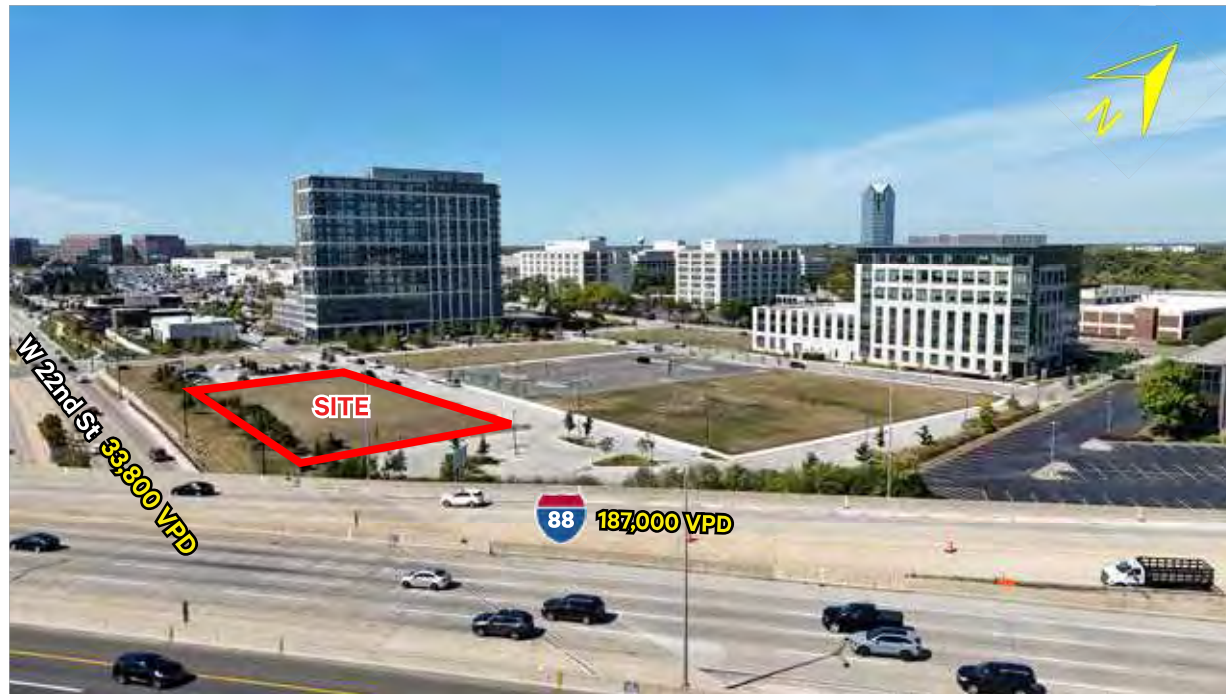
PAD G CONCEPTUAL SITE PLAN



Multiple Restaurant Pads Available | Oak Brook Commons
Oak Brook, IL 60523

Available

Aerial Photos



Multiple Restaurant Pads Available | Oak Brook Commons
Oak Brook, IL 60523

Available



Contact Us

Mario Melone

Vice President

+1 630 573 7112

mario.melone@cbre.com

© 2024 CBRE, Inc. All rights reserved. This information has been obtained from sources believed reliable, but has not been verified for accuracy or completeness. You should conduct a careful, independent investigation of the property and verify all information. Any reliance on this information is solely at your own risk. CBRE and the CBRE logo are service marks of CBRE, Inc. All other marks displayed on this document are the property of their respective owners, and the use of such logos does not imply any affiliation with or endorsement of CBRE. Photos herein are the property of their respective owners. Use of these images without the express written consent of the owner is prohibited.

