

7101 183rd Street, Tinley Park, IL 60477

# Convention Center



## OFFERING SUMMARY

Available SF:	2,270 SF
Lease Rate:	\$25 SF/yr (NNN)
Lot Size:	1.54 Acres
Year Built:	2008
Building Size:	12,161
Zoning:	B-3
Market:	Chicago MSA
Submarket:	Southwest Suburbs – Tinley Park / Orland Park Retail Corridor
Traffic Counts:	Harlem Ave: 34,000+ 183rd St: 13,500+

## PROPERTY OVERVIEW

Now available for lease is 2,270 square feet of prime inline retail space within a high-traffic shopping center in Tinley Park. The space offers excellent frontage, strong visibility, and convenient customer access, making it ideal for national or regional retailers seeking a proven suburban retail corridor.

The suite is positioned alongside established national co-tenants, driving consistent foot traffic and cross-shopping. Its efficient layout and flexible footprint accommodate a variety of food, retail, or service-oriented uses. The location benefits from strong commuter flow, nearby hotels, and surrounding residential density, supporting steady daytime and evening business.

## PROPERTY HIGHLIGHTS

- 2,270 SF inline retail space available for lease
- Excellent visibility along the busy 183rd Street retail corridor
- Adjacent co-tenancy includes Tropical Smoothie Café and Verizon Wireless
- Immediate access to major highways and commuter routes
- Close proximity to hotels, event venues, and convention destinations

for more information

**Neil Haleem**

708.873.5540  
neil@networkregroup.com

**Adam Haleem**

708.800.6487  
adam@networkregroup.com



7101 183rd Street, Tinley Park, IL 60477

# Convention Center



Map data ©2026 Imagery ©2026 Airbus, CNES / Airbus, Maxar Technologies, Vexcel Imaging US, Inc.

for more information

**Neil Haleem**

708.873.5540  
neil@networkregroup.com

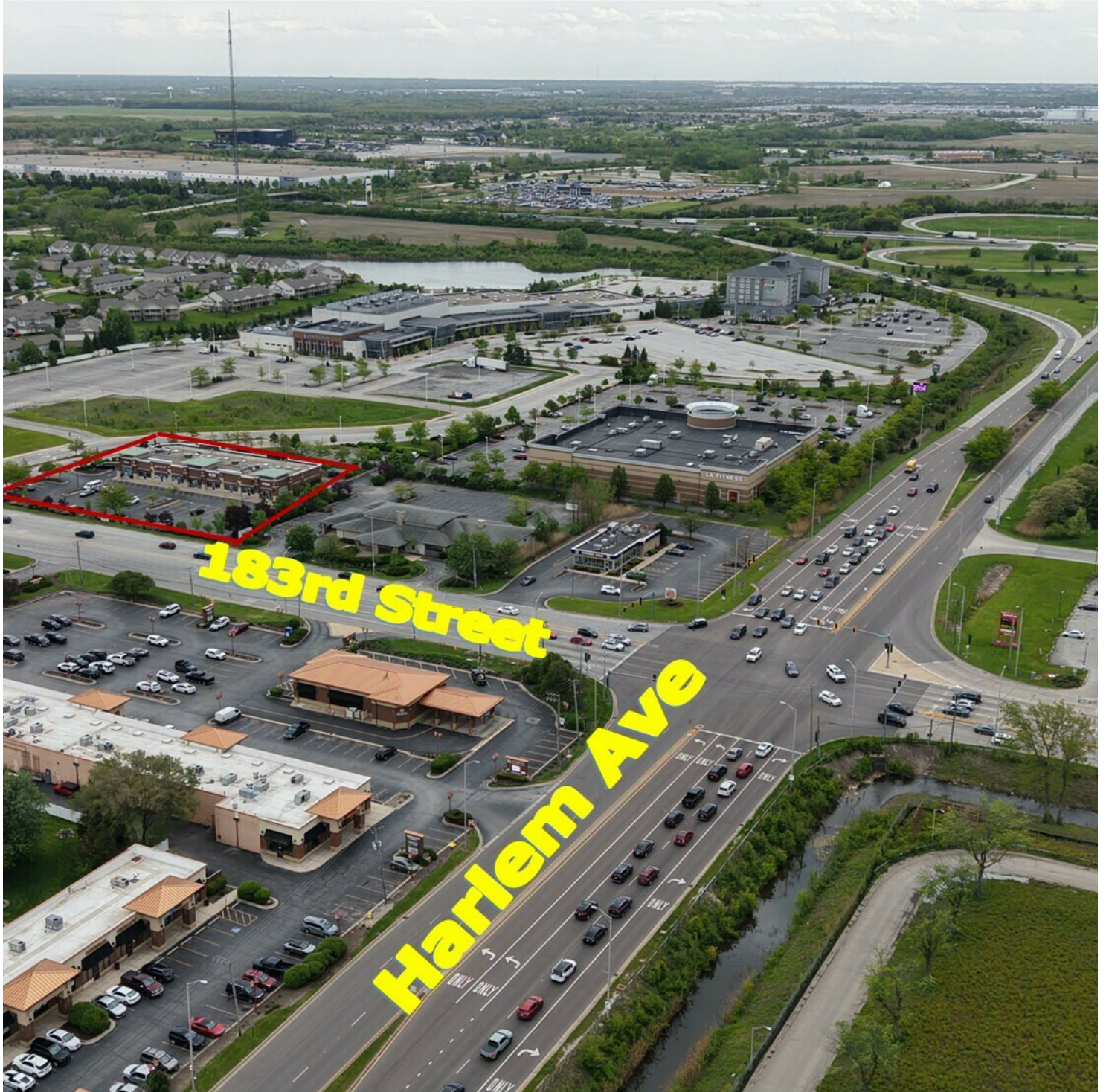
**Adam Haleem**

708.800.6487  
adam@networkregroup.com



7101 183rd Street, Tinley Park, IL 60477

# Convention Center



for more information

**Neil Haleem**

708.873.5540

neil@networkregroup.com

**Adam Haleem**

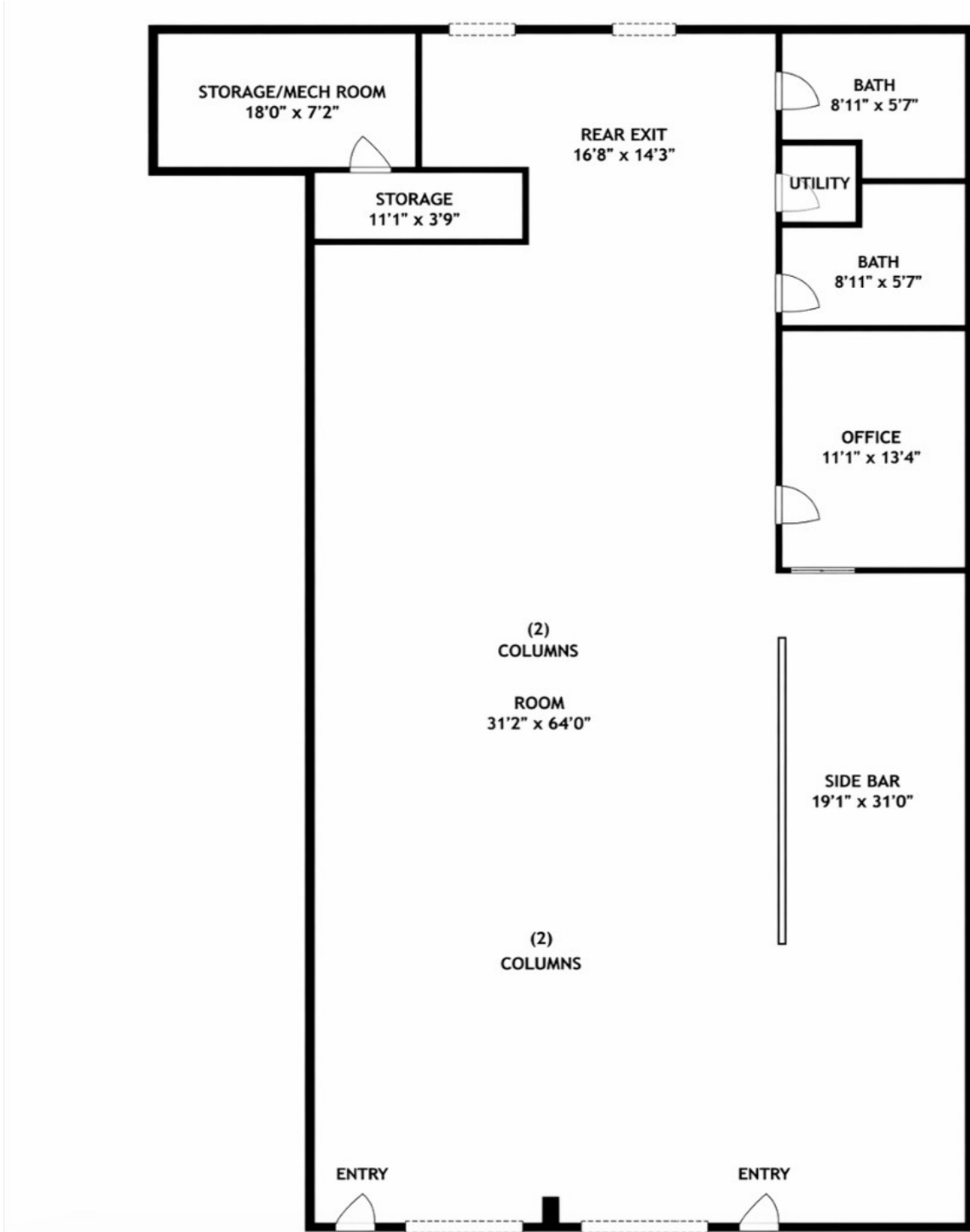
708.800.6487

adam@networkregroup.com



7101 183rd Street, Tinley Park, IL 60477

# Convention Center



for more information

**Neil Haleem**

708.873.5540  
neil@networkregroup.com

**Adam Haleem**

708.800.6487  
adam@networkregroup.com



7101 183rd Street, Tinley Park, IL 60477

# Convention Center



for more information

**Neil Haleem**

708.873.5540  
neil@networkregroup.com

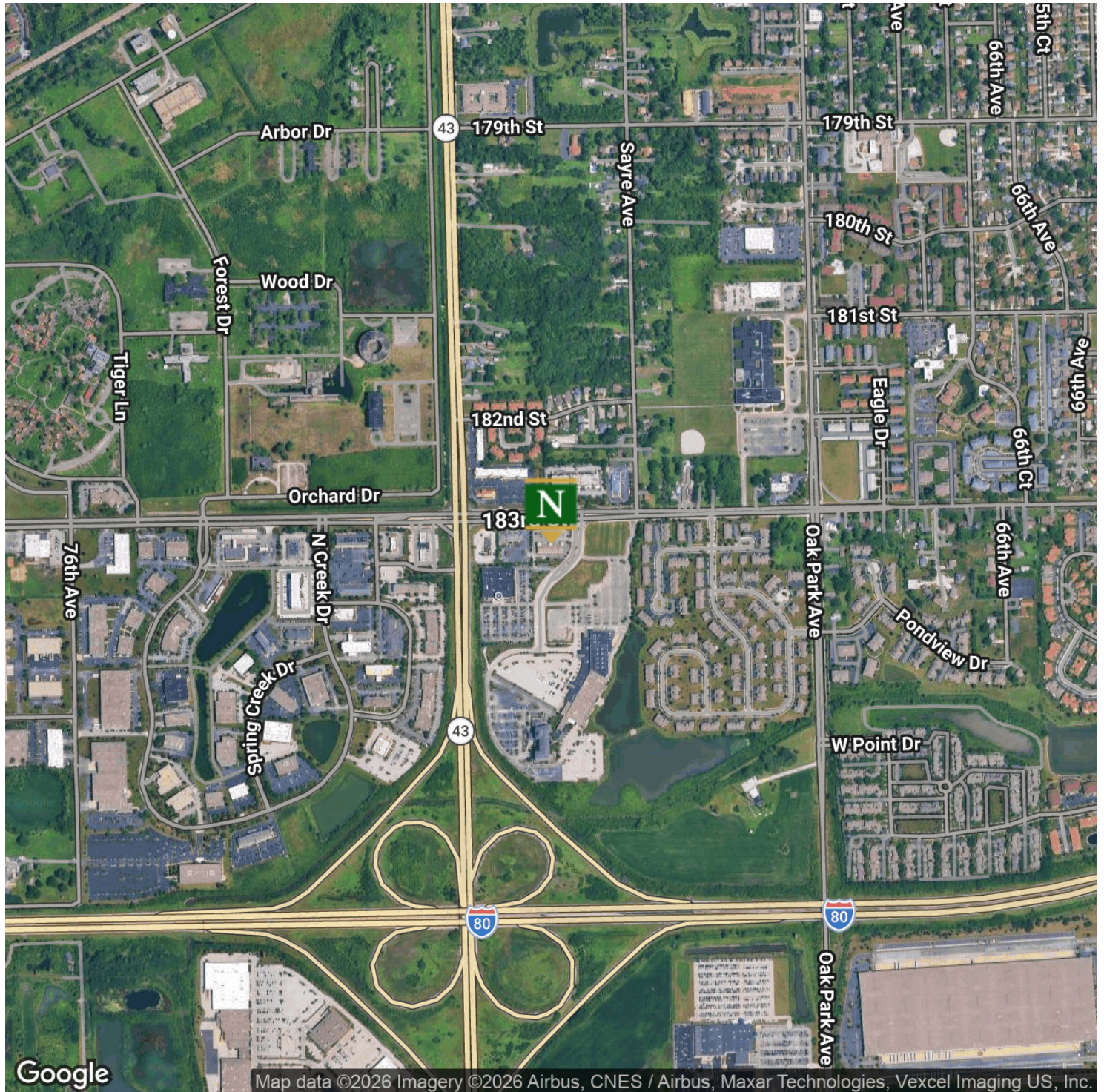
**Adam Haleem**

708.800.6487  
adam@networkregroup.com



7101 183rd Street, Tinley Park, IL 60477

# Convention Center



for more information

**Neil Haleem**

708.873.5540

neil@networkregroup.com

**Adam Haleem**

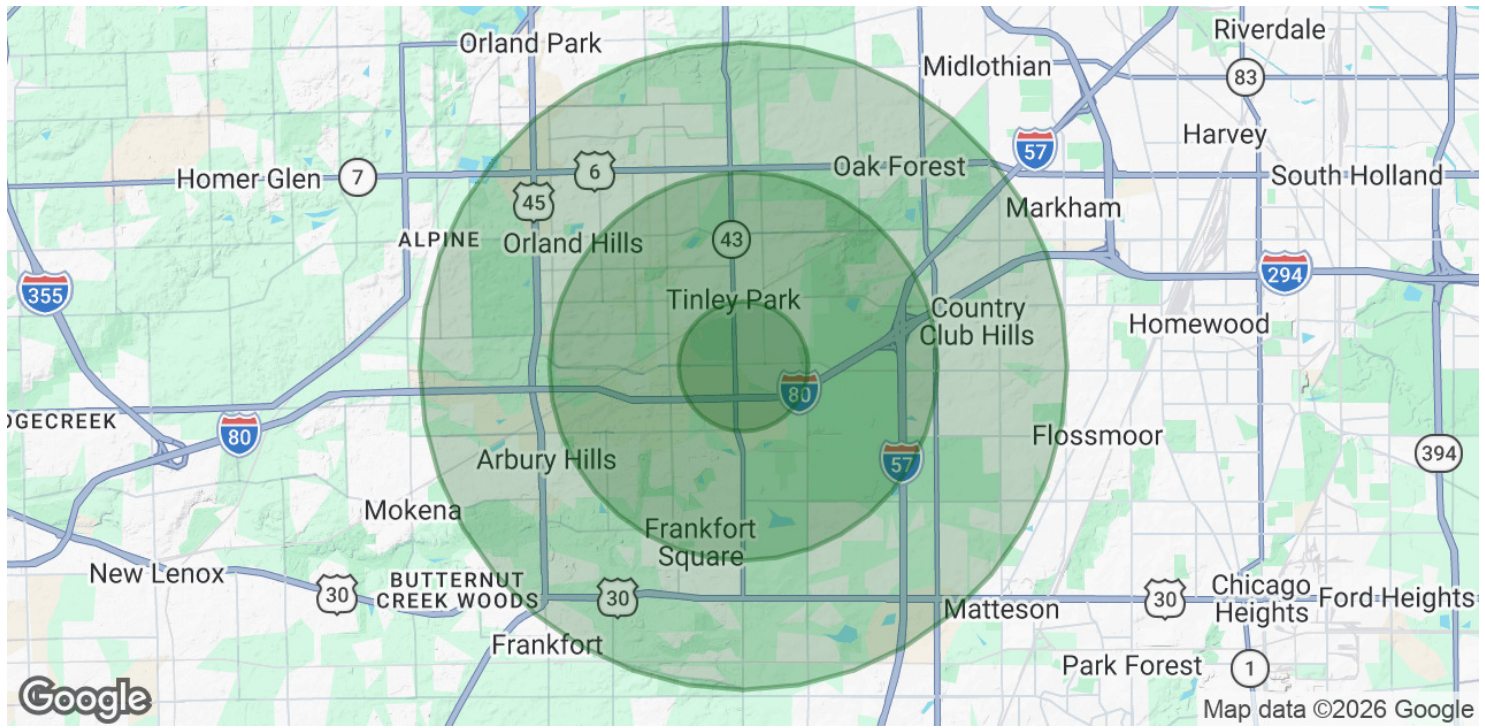
708.800.6487

adam@networkregroup.com



7101 183rd Street, Tinley Park, IL 60477

# Convention Center



<b>POPULATION</b>	<b>1 MILE</b>	<b>3 MILES</b>	<b>5 MILES</b>
Total Population	6,179	65,855	176,756
Average Age	49	43	43
Average Age (Male)	47	41	41
Average Age (Female)	51	44	44

<b>HOUSEHOLDS &amp; INCOME</b>	<b>1 MILE</b>	<b>3 MILES</b>	<b>5 MILES</b>
Total Households	3,094	25,272	66,909
# of Persons per HH	2	2.6	2.6
Average HH Income	\$99,322	\$130,291	\$122,211
Average House Value	\$310,006	\$318,926	\$302,839

<b>ETHNICITY (%)</b>	<b>1 MILE</b>	<b>3 MILES</b>	<b>5 MILES</b>
Hispanic	8.0%	9.5%	10.2%

<b>RACE</b>	<b>1 MILE</b>	<b>3 MILES</b>	<b>5 MILES</b>
-------------	---------------	----------------	----------------

for more information

**Neil Haleem**

708.873.5540  
neil@networkregroup.com

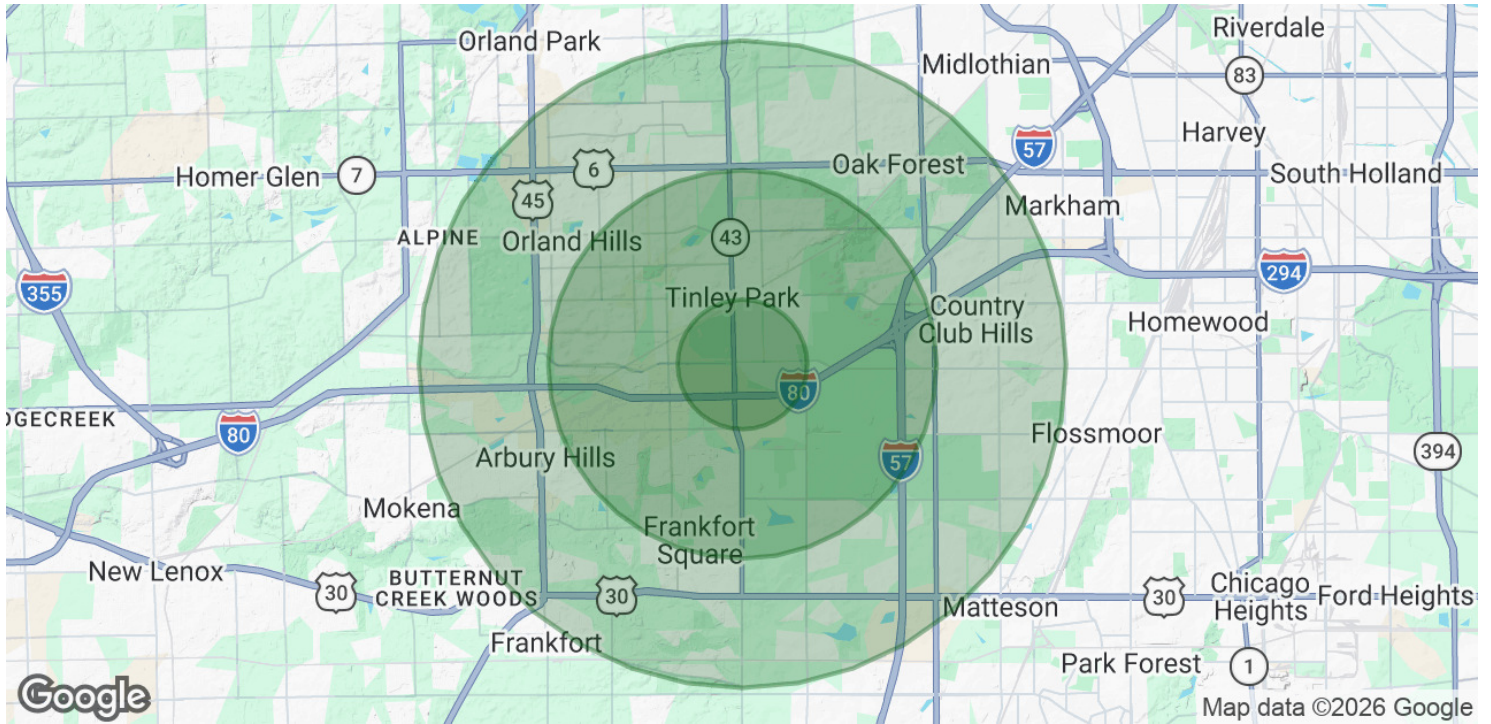
**Adam Haleem**

708.800.6487  
adam@networkregroup.com



7101 183rd Street, Tinley Park, IL 60477

# Convention Center



Total Population - White	4,887	48,373	108,899
% White	79.1%	73.5%	61.6%
Total Population - Black	580	8,384	42,826
% Black	9.4%	12.7%	24.2%
Total Population - Asian	184	2,478	6,075
% Asian	3.0%	3.8%	3.4%
Total Population - Hawaiian	3	7	28
% Hawaiian	0.0%	0.0%	0.0%
Total Population - American Indian	12	143	487
% American Indian	0.2%	0.2%	0.3%
Total Population - Other	143	1,769	6,292
% Other	2.3%	2.7%	3.6%

2020 American Community Survey (ACS)

for more information

**Neil Haleem**

708.873.5540  
neil@networkregroup.com

**Adam Haleem**

708.800.6487  
adam@networkregroup.com

