



Corporate Ridge I

Located at the K-10 and Ridgeview interchange, this Class A office building is exceptionally located. Corporate Ridge I offers new, first class interior finishes and an open two-story modern atrium lobby to inspire tenants and visitors alike.

**Class A Office
Suites Available**



18103 W 106TH STREET, OLATHE, KS

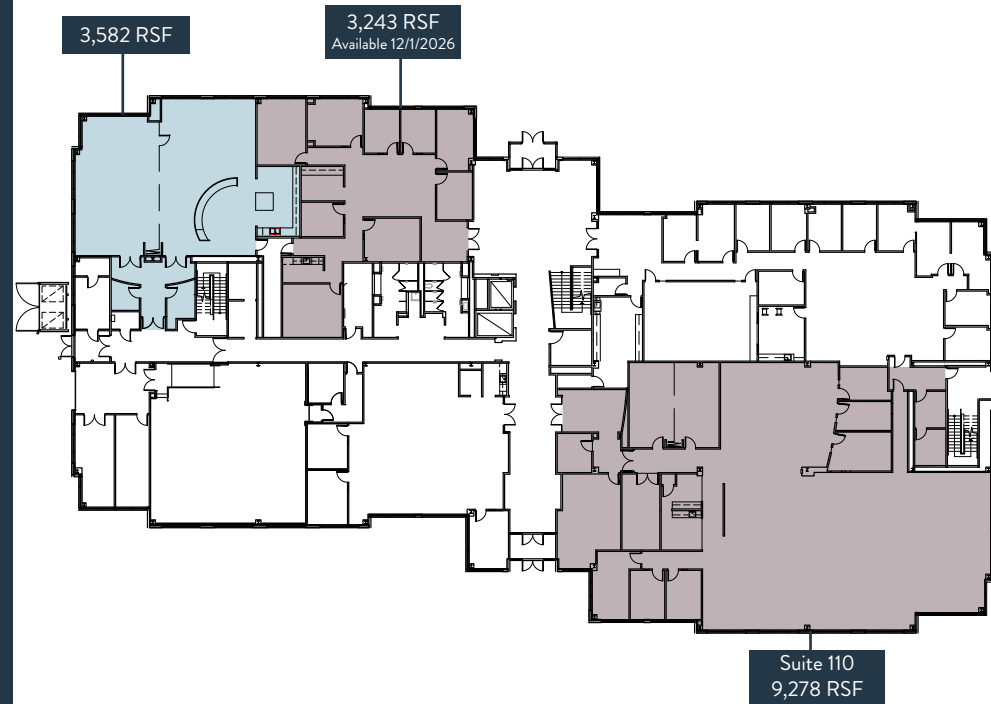


\$23.00/SF
Full Service

Highlights

- 88,050 SF Total
- 4.7 per 1,000
- Class A office building built in 2008
- New, first class interior finishes
- Open, two-story modern atrium lobby
- Easy highway access from K-10 and Ridgeview interchange
- Close proximity to restaurants and shopping on Ridgeview and Lenexa City Center
- Next door to brand new Olathe Convention Center and Hotel
- Adjacent to Genesis Health Club
- Generator availability

Corporate Ridge I



Local Amenities

1. Olathe Convention Center & Hotel

2. Ridgeview Marketplace

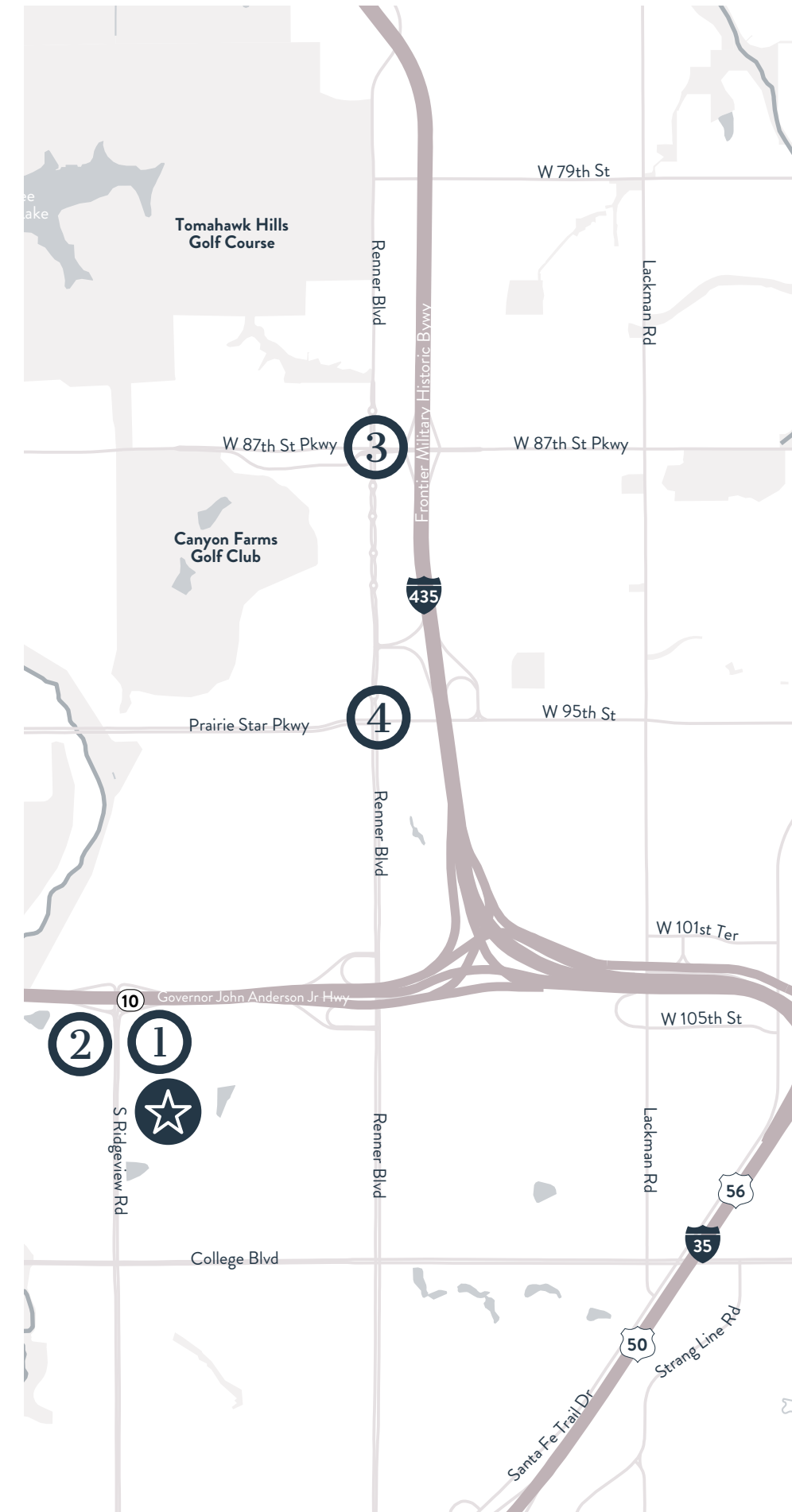
- Minsky's Pizza
- Salty Iguana
- The Rub Bar-B-Que
- Goodcents Deli Fresh Subs
- Johnny's Tavern
- Holiday Inn Express
- Genesis CrossFit
- Taco Bell
- Burger King

3. Lenexa City Center

- Revocup Lenexa Coffee Shop
- Red Kitchen Tamales
- Martin City Brewing
- Lenexa Public Market
- Grand Street Lenexa
- Jack Stack
- Freddy's Frozen Custard & Steakhouse
- Hyatt Place
- Lifetime Fitness

4. Additional Restaurants + Retail

- Brewbakers Bar & Grill
- Prairie Market
- Hibachi Go





Corporate Ridge I

For leasing information:

RJ TROWBRIDGE
+1 913 469 4637
rj.trowbridge@jll.com

AVERY COMEAU
+1 913 927 9252
avery.comeau@jll.com



Although information has been obtained from sources deemed reliable, JLL does not make any guarantees, warranties or representations, express or implied, as to the completeness or accuracy as to the information contained herein. Any projections, opinions, assumptions or estimates used are for example only. There may be differences between projected and actual results, and those differences may be material. JLL does not accept any liability for any loss or damage suffered by any party resulting from reliance on this information. If the recipient of this information has signed a confidentiality agreement with JLL regarding this matter, this information is subject to the terms of that agreement. ©2026 Jones Lang LaSalle IP, Inc. All rights reserved.