

540 Atlantic Avenue

Boerum Hill, Brooklyn, NY

Between 3rd Avenue and 4th Avenue

Ground Level:

15,000 SF

Second Level:

7,500 SF

Frontage:

64 FT on Atlantic Ave / 65 FT on Pacific Street

Ceiling Heights:

Ground Floor: 15 FT (Atlantic Av) / 25 FT (Pacific St)

Second Floor: 11 FT

Rent:

Upon Request

Highlights:

- Located only one block away from Barclays Center and Atlantic Terminal Mall, which generates continuous foot traffic along Atlantic Avenue
- Just steps away from **2 3 4 5 B D N Q R** Trains at Atlantic Avenue / Barclays Center Station with 13,807,282 annual ridership
- Boerum Hill has a strong retail shopping, restaurants and bars, offices, and residential market



NEIGHBORING TENANTS:



Contact Exclusive Leasing Team



Harrison Balisky
516-672-4493
hb@olmstedre.com

Josh Sloan
516-350-2621
js@olmstedre.com

Aaron Lee
469-442-9897
al@olmstedre.com



540 Atlantic Avenue

Boerum Hill, Brooklyn, NY

Floor Plan
Ground Floor

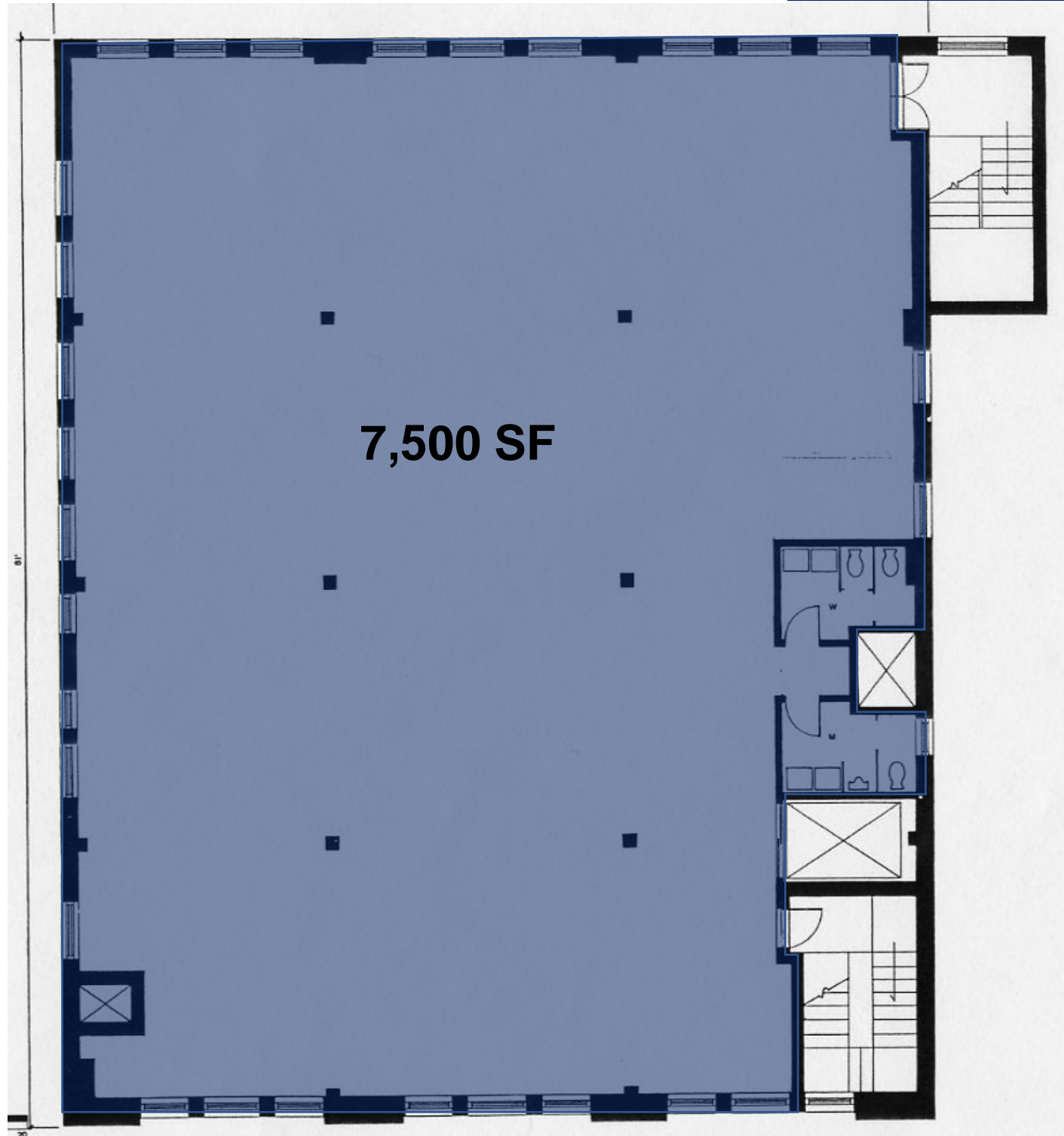




540 Atlantic Avenue

Boerum Hill, Brooklyn, NY

Floor Plan
Second Floor



Atlantic Avenue



540 Atlantic Avenue

Boerum Hill, Brooklyn, NY

Map

