

IRVING STREET STATION



MOTTMAN RD SW

CROSBY BLD SW

FOR LEASE

Space for lease in a 65,120 SF, 3 bldg business park centrally located with easy access to Hwy 101 in Tumwater/Olympia

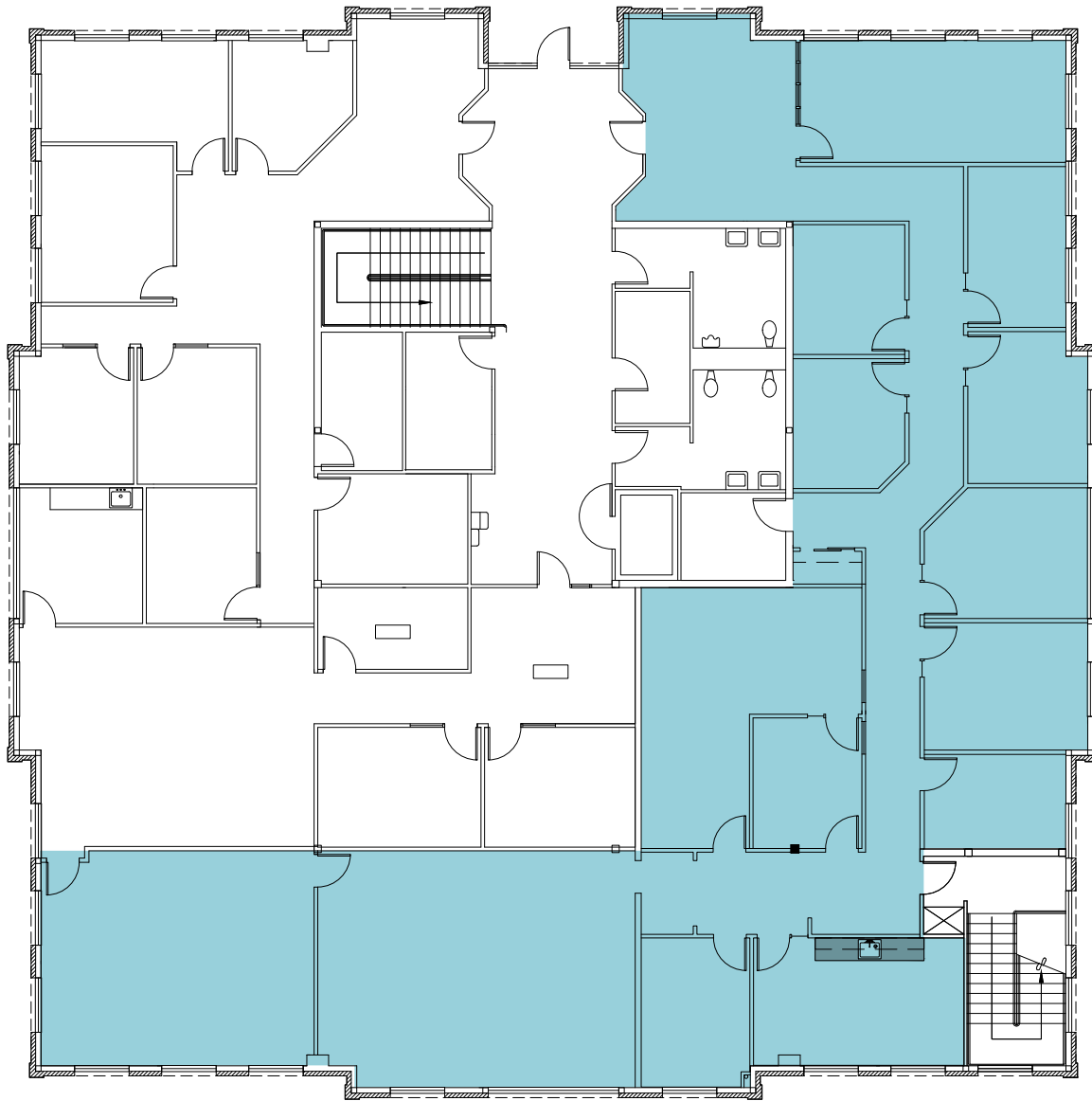
TUMWATER, WA

5,405 SF

1550 IRVING ST

9,449 SF

1570 IRVING ST



*High-image office space
available March 1, 2024*

1550 IRVING STREET

5,405 SF

One conference room

Nine private offices

Full kitchen/breakroom

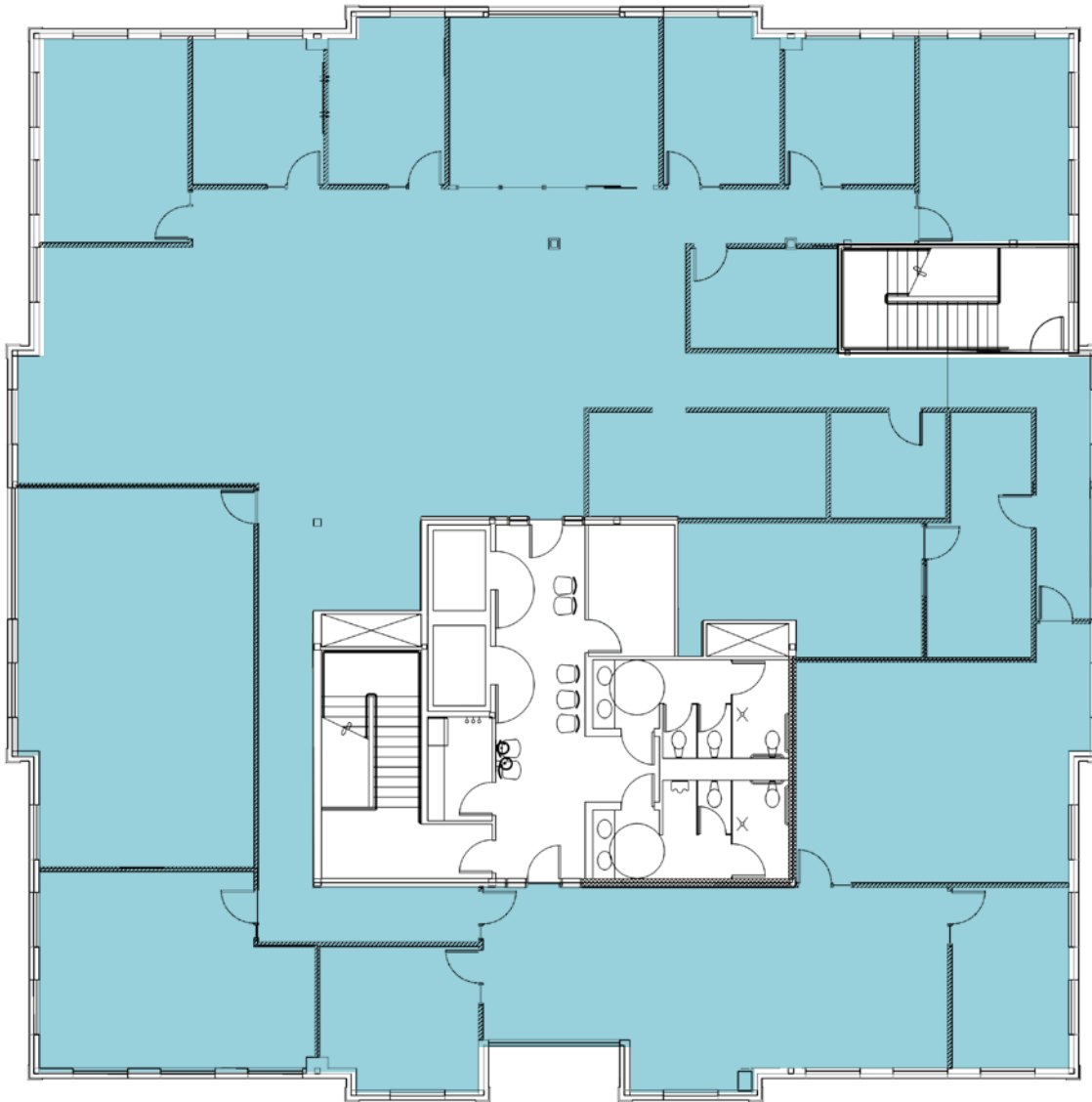
Work room

Storage

Ample parking

Building signage opportunity

\$22.00 PSF modified gross



*Entire third floor
available now*

1570 IRVING STREET

9,449 SF

Three conference rooms

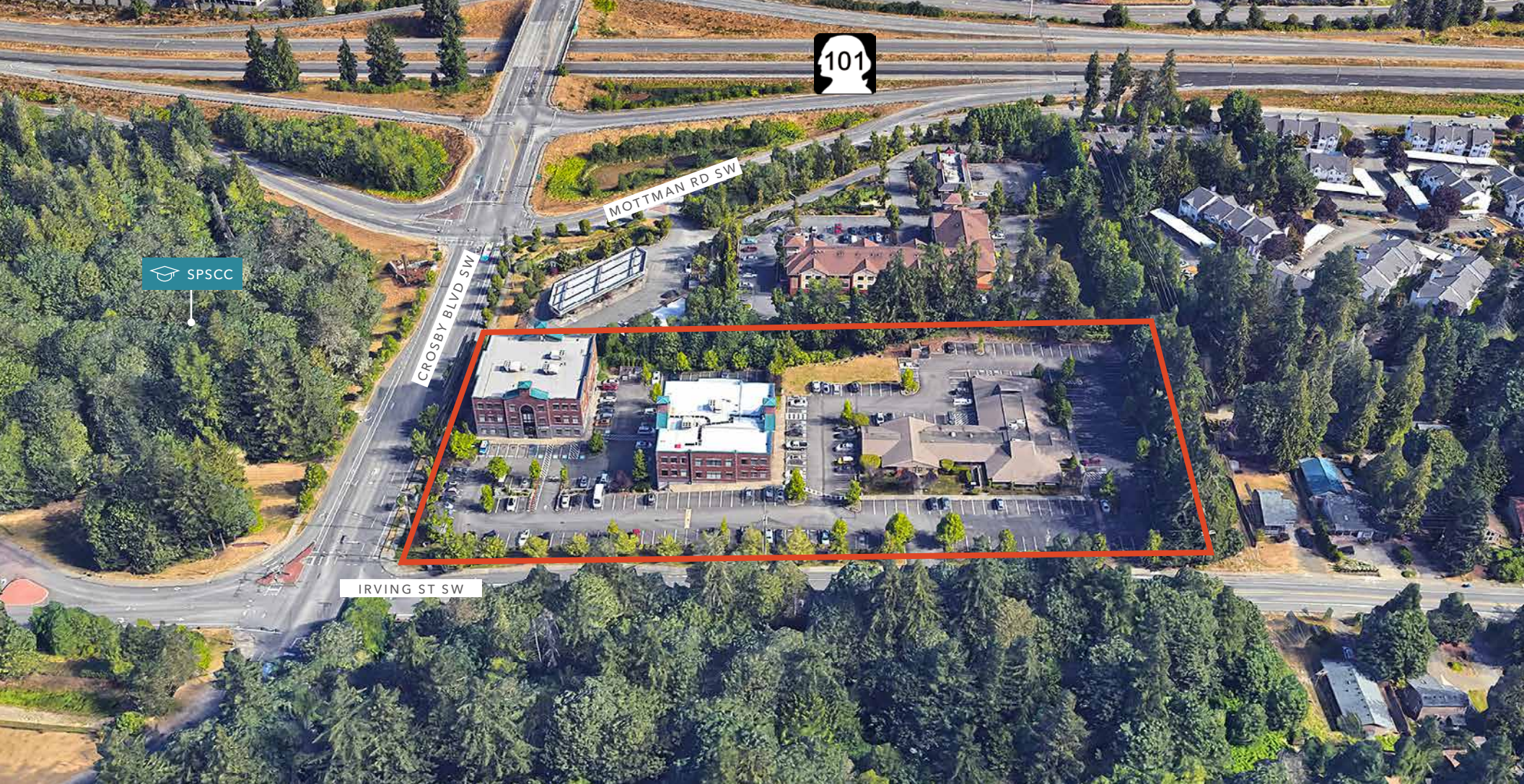
Ten private offices

Network room

Full kitchen/breakroom

Work room

Sublease through December 31, 2025



IRVING STREET STATION

*For more information on
this property, please contact*

EVAN PARKER
360.705.0174
evan.parker@kidder.com

KIDDER.COM