

FOR SALE

INDUSTRIAL BUILDING

30,510 SF



13525 Crenshaw Blvd., Hawthorne, California

CalBRE #01774875

Contact Us | Visit Us Online
562.692.2200 | interpresrealty.com





THE OFFERING

interPres Commercial Realty is pleased to present an excellent opportunity to purchase a truly unique property, with best-in-class amenities, and in the highly desirable area of Hawthorne, CA. The property features a freestanding ~30,510 square foot high image concrete tilt-up industrial building built in 2000. Amenities include ~36' warehouse clearance, dock high and ground level loading, high hazard fire sprinklers, 3,400 sf office area and a large concrete paved and fenced storage yard. This premier site is ideally located, has excellent proximity to LAX, the Ports of Los Angeles/ Long Beach, and positioned with immediate freeway access to service the entire Southern California region.

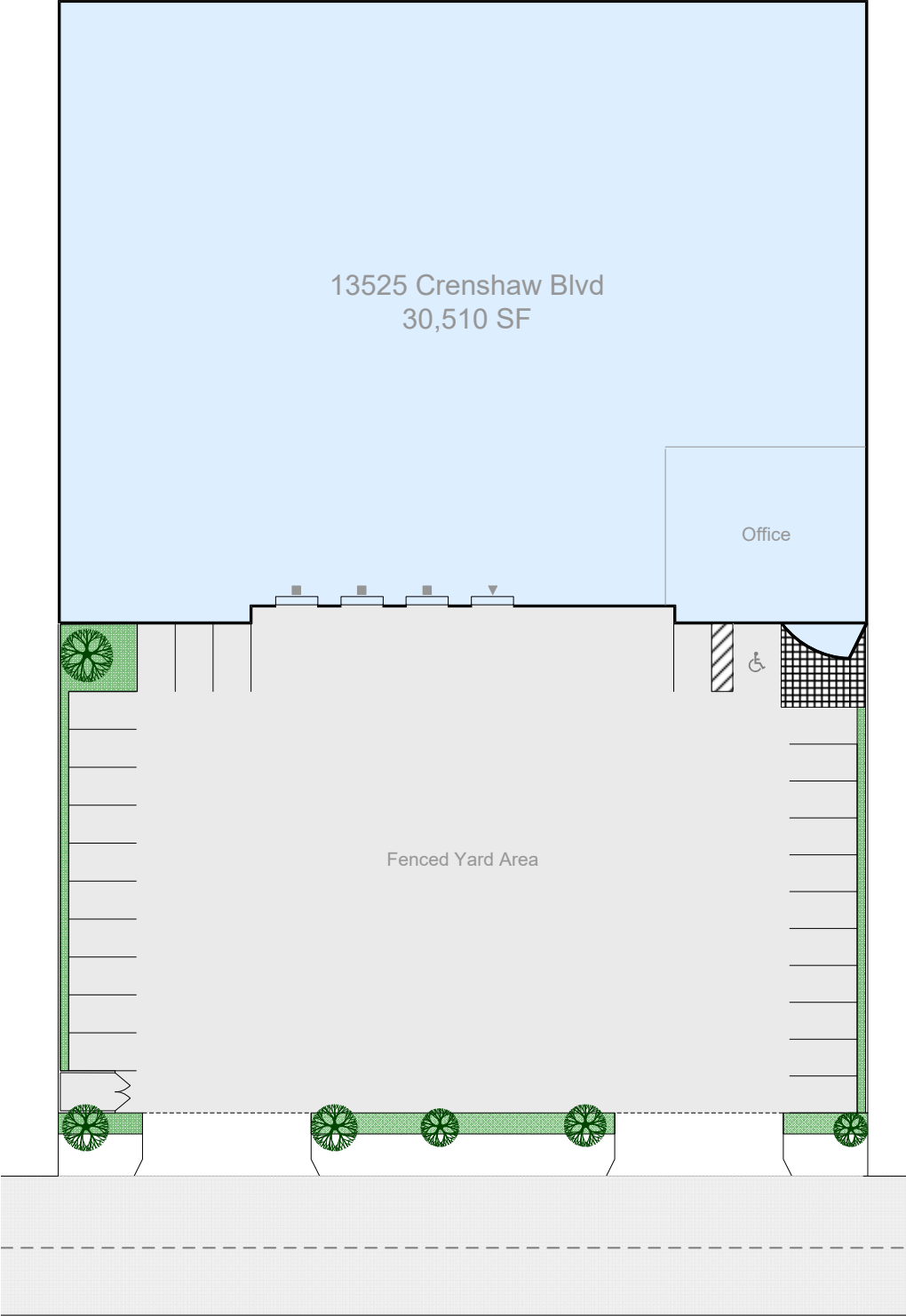
Property Type	Industrial Whse/Dist.
Building Size	30,510 SF
Office	3,400 SF
Lot Size	51,690 SF
Warehouse Height	36' Min
Power	TBD
Ground Level Door	3
Dock High Positions	1
Sprinklers	Yes/High Hazard
Yard	Paved & Fenced
Construction Type	CTU
Year Built	2000
Zoning	M-1



STREET VIEW



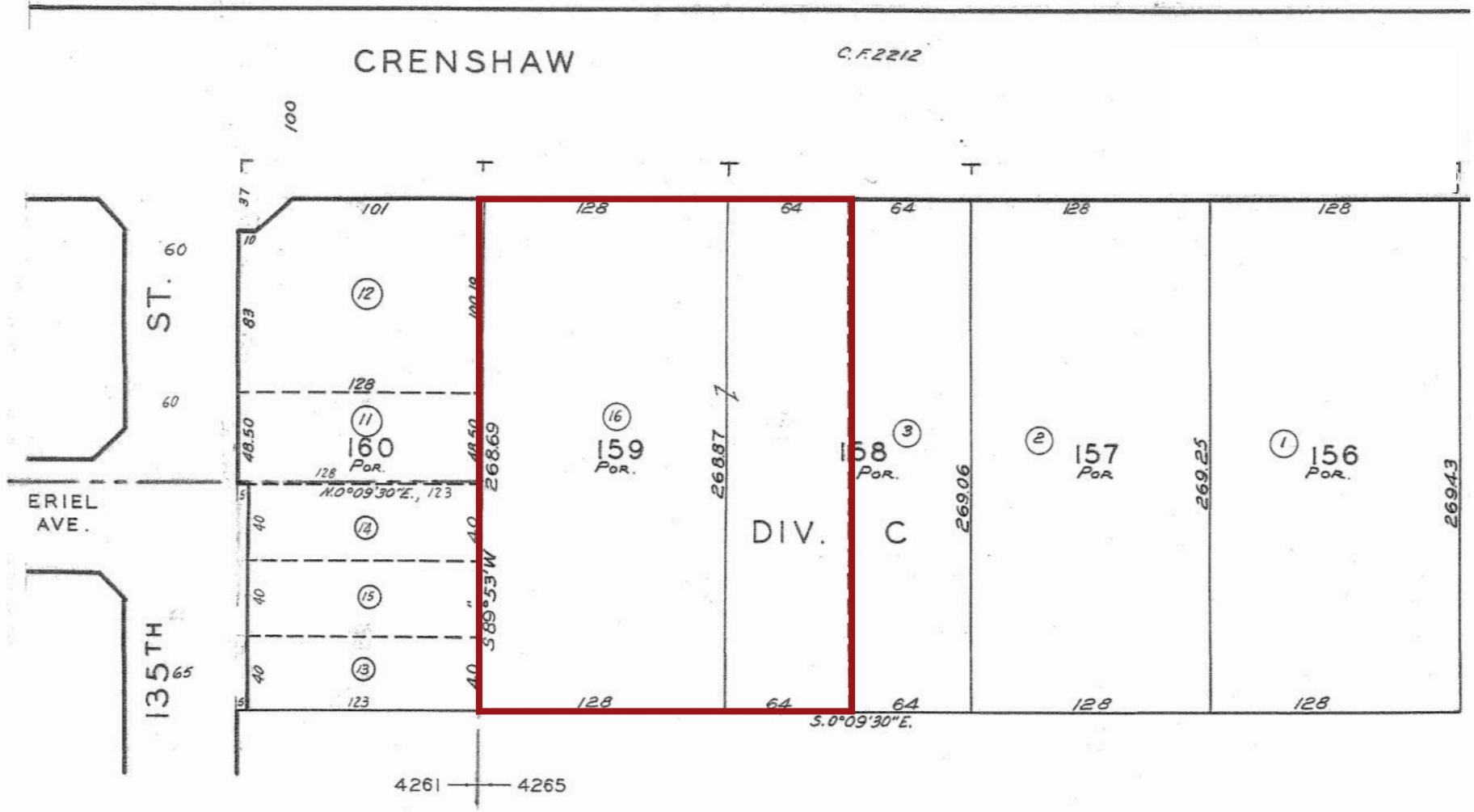
SITE PLAN



Rendering not to scale



PARCEL MAP



CODE
4261
4265

TRACT NO. 874

M. B. 18 - 133

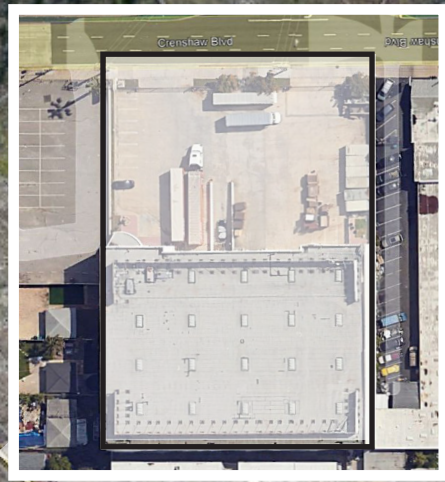


VICINITY MAP

PORT OF LOS ANGELES

PORT OF LONG BEACH

Terminal Island





For more information,
please contact us.



Peter Pistone
President
213.418.9200 Direct
peterp@interpresrealty.com
BRE Lic. #01007013

Sandy Gonzalez
Associate Vice President
562.469.5331 Direct
sandyg@interpresrealty.com
BRE Lic. #02097966



The information contained herein has been obtained from sources we deem reliable. While we have no reason to doubt it's accuracy, we do not guarantee it or make any representations about it. interPres Commercial Realty suggests you perform a careful, independent investigation of the property to determine the suitability of the property for your needs. All measurements and specifications are approximate.

CalBRE #01774875

Contact Us | Visit Us Online
562.692.2200 | interpresrealty.com

