

OFFICE PROPERTY FOR LEASE

Medical Suites Available up to 5,678 SF at Maple & Orchard Lake

6177 ORCHARD LAKE RD
WEST BLOOMFIELD, MI 48322



1,231 - 5,678 SF available

Attractive layouts with multiple exam rooms

Two miles from Henry Ford West Bloomfield
Hospital

Abundant parking



P.A. COMMERCIAL
Corporate & Investment Real Estate

PINE ORCHARD PROFESSIONAL

6177 ORCHARD LAKE RD, WEST BLOOMFIELD, MI

// EXECUTIVE SUMMARY



OFFERING SUMMARY

Available SF:	1,231 - 5,678 SF
Building Size:	14,326 SF
Lease Rate:	Negotiable
Zoning:	BI
Year Built:	1983
Lot Size:	1.22 Acres
Market:	Detroit
Submarket:	Bloomfield West
Traffic Count:	30,000

PROPERTY OVERVIEW

Attractive medical, dental, and office suites are available within Pine Orchard Professional Building. All available suites have great floor plans with abundant exam rooms, laboratory, and break room space. Neighboring tenants include dentistry, orthodontics, facial surgery, and prosthodontists services. This is an excellent opportunity to bring your business to this well-maintained professional building in the heart of West Bloomfield!

LOCATION OVERVIEW

Conveniently located just two miles northeast from Henry Ford West Bloomfield Hospital. High traffic location with great visibility at the corridor of Maple Rd and Orchard Lake Rd, in the affluent community of West Bloomfield. The abundant amount of surrounding amenities, retail, and restaurants help serve this growing community.

PROPERTY HIGHLIGHTS

- 1,231 - 5,678 SF available
- Attractive layouts w/ multiple exam rooms
- Two miles from Henry Ford West Bloomfield Hospital
- Abundant parking
- Other tenants include successful dental/medical practices

MIKE GUNN Associate
mike@pacommercial.com (P) 248.331.0202 (C) 248.924.7499

MATTHEW J. SCHIFFMAN Senior Associate
matt@pacommercial.com (P) 248.281.9907 (C) 248.943.6449



26555 Evergreen Road, Suite 1500 • Southfield, MI 48076

PINE ORCHARD PROFESSIONAL

6177 ORCHARD LAKE RD, WEST BLOOMFIELD, MI

// AVAILABLE SPACES

LEASE TYPE | Gross + Utilities; Gross + Utilities

TOTAL SPACE | 1,231 - 5,678 SF

LEASE TERM | Negotiable

LEASE RATE | Negotiable



SUITE	TENANT	SIZE (SF)	LEASE TYPE	LEASE RATE
6177 Orchard Lake Rd, Suite 100	Available	2,176 SF	Gross + Utilities	Negotiable
6177 Orchard Lake Rd, Suite 120	Available	3,502 SF	Gross + Utilities	Negotiable
6177 Orchard Lake Rd, Suite 100 & 120 Combined	Available	5,678 SF	Gross + Utilities	Negotiable
6177 Orchard Lake Rd, Suite 220	Available	1,231 SF	Gross + Utilities	Negotiable

MIKE GUNN Associate
mike@pacommercial.com (P) 248.331.0202 (C) 248.924.7499

MATTHEW J. SCHIFFMAN Senior Associate
matt@pacommercial.com (P) 248.281.9907 (C) 248.943.6449



P.A. COMMERCIAL
Corporate & Investment Real Estate

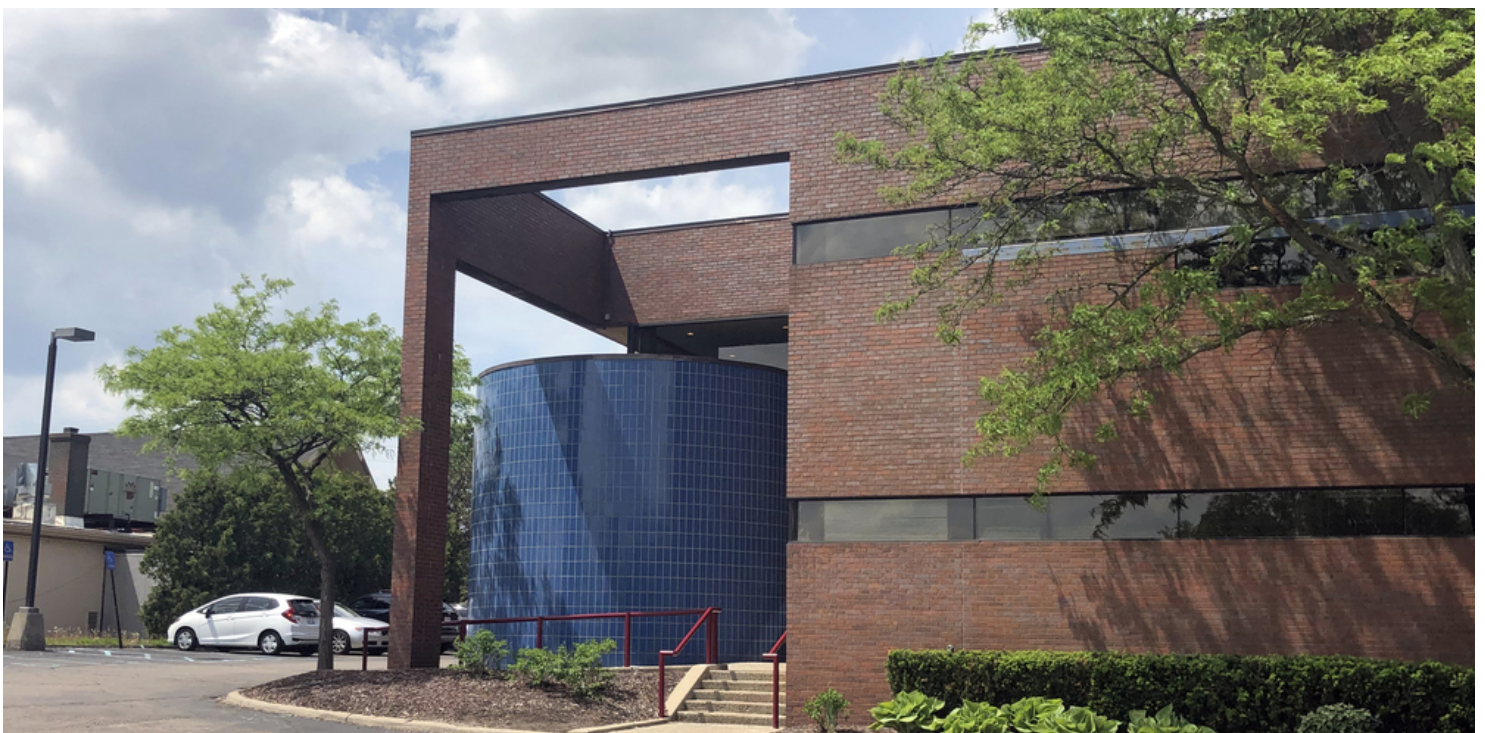
26555 Evergreen Road, Suite 1500 • Southfield, MI 48076

OFFICE PROPERTY FOR LEASE

PINE ORCHARD PROFESSIONAL

6177 ORCHARD LAKE RD, WEST BLOOMFIELD, MI

// ADDITIONAL PHOTOS



MIKE GUNN Associate
mike@pacommercial.com (P) 248.331.0202 (C) 248.924.7499

MATTHEW J. SCHIFFMAN Senior Associate
matt@pacommercial.com (P) 248.281.9907 (C) 248.943.6449



P.A. COMMERCIAL
Corporate & Investment Real Estate

26555 Evergreen Road, Suite 1500 • Southfield, MI 48076

We obtained the information above from sources we believe to be reliable. However, we have not verified its accuracy and make no guarantee, warranty or representation about it. It is submitted subject to the possibility of errors, omissions, change of price, rental or other conditions, prior sale, lease or financing, or withdrawal without notice. We include projections, opinions, assumptions or estimates for example only, and they may not represent current or future performance of the property. You and your tax and legal advisors should conduct your own investigation of the property and transaction.

PINE ORCHARD PROFESSIONAL

6177 ORCHARD LAKE RD, WEST BLOOMFIELD, MI

// ADDITIONAL PHOTOS



MIKE GUNN Associate
mike@pacommercial.com (P) 248.331.0202 (C) 248.924.7499

MATTHEW J. SCHIFFMAN Senior Associate
matt@pacommercial.com (P) 248.281.9907 (C) 248.943.6449



P.A. COMMERCIAL
Corporate & Investment Real Estate

26555 Evergreen Road, Suite 1500 • Southfield, MI 48076

PINE ORCHARD PROFESSIONAL

6177 ORCHARD LAKE RD, WEST BLOOMFIELD, MI

// ADDITIONAL PHOTOS



MIKE GUNN Associate
mike@pacommercial.com (P) 248.331.0202 (C) 248.924.7499

MATTHEW J. SCHIFFMAN Senior Associate
matt@pacommercial.com (P) 248.281.9907 (C) 248.943.6449



P.A. COMMERCIAL
Corporate & Investment Real Estate

26555 Evergreen Road, Suite 1500 • Southfield, MI 48076

PINE ORCHARD PROFESSIONAL

6177 ORCHARD LAKE RD, WEST BLOOMFIELD, MI

// ADDITIONAL PHOTOS



MIKE GUNN Associate
mike@pacommercial.com (P) 248.331.0202 (C) 248.924.7499

MATTHEW J. SCHIFFMAN Senior Associate
matt@pacommercial.com (P) 248.281.9907 (C) 248.943.6449



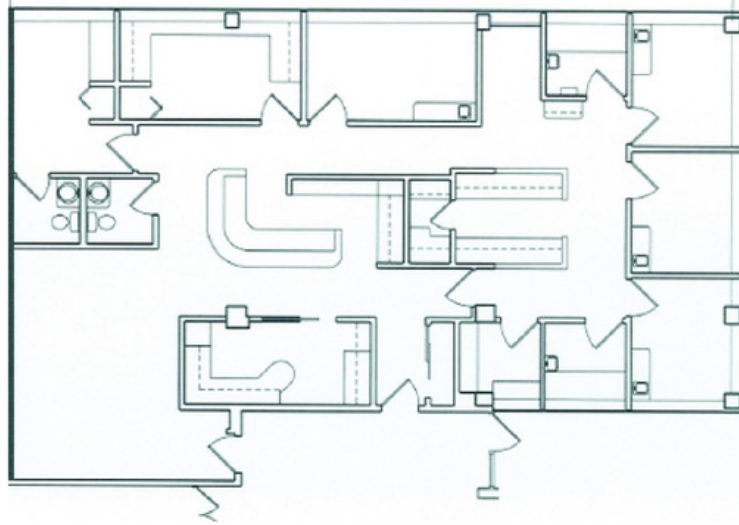
P.A. COMMERCIAL
Corporate & Investment Real Estate

26555 Evergreen Road, Suite 1500 • Southfield, MI 48076

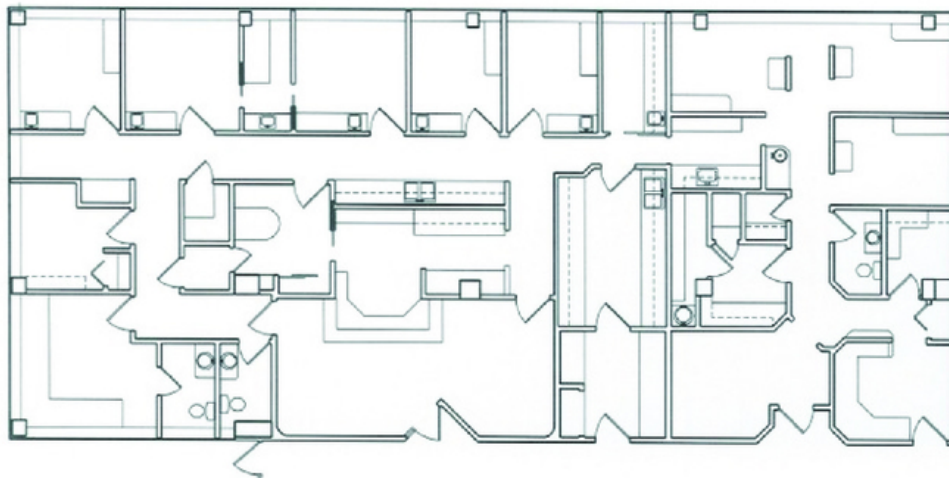
PINE ORCHARD PROFESSIONAL

6177 ORCHARD LAKE RD, WEST BLOOMFIELD, MI

// FLOOR PLANS



Suite 100



Suite 120

MIKE GUNN Associate
mike@pacommercial.com (P) 248.331.0202 (C) 248.924.7499

MATTHEW J. SCHIFFMAN Senior Associate
matt@pacommercial.com (P) 248.281.9907 (C) 248.943.6449



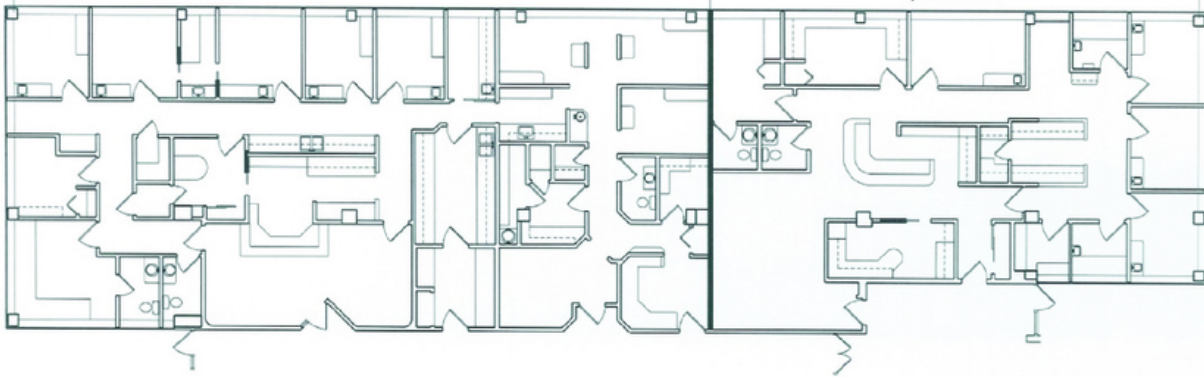
P.A. COMMERCIAL
Corporate & Investment Real Estate

26555 Evergreen Road, Suite 1500 • Southfield, MI 48076

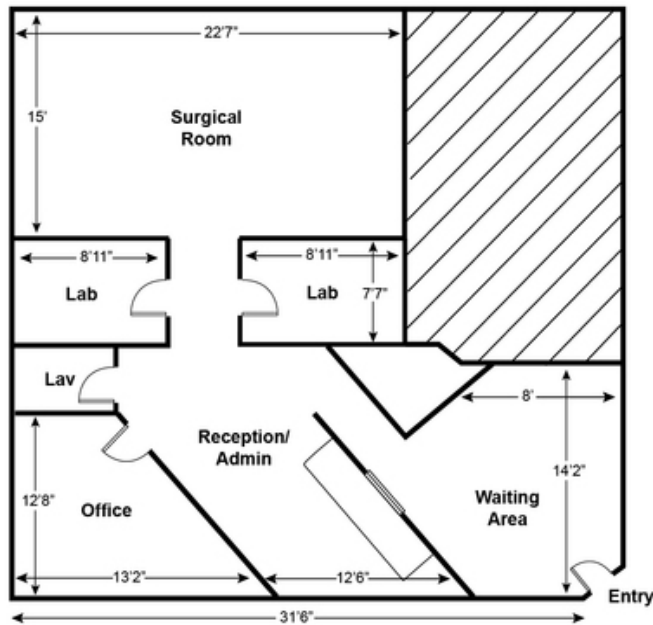
PINE ORCHARD PROFESSIONAL

6177 ORCHARD LAKE RD, WEST BLOOMFIELD, MI

// FLOOR PLANS



Suite 100 & 120 Combined



Suite 220

MIKE GUNN Associate
mike@pacommercial.com (P) 248.331.0202 (C) 248.924.7499

MATTHEW J. SCHIFFMAN Senior Associate
matt@pacommercial.com (P) 248.281.9907 (C) 248.943.6449



P.A. COMMERCIAL
Corporate & Investment Real Estate

26555 Evergreen Road, Suite 1500 • Southfield, MI 48076

PINE ORCHARD PROFESSIONAL

6177 ORCHARD LAKE RD, WEST BLOOMFIELD, MI

// RETAILER MAP



MIKE GUNN Associate
mike@pacommercial.com (P) 248.331.0202 (C) 248.924.7499

MATTHEW J. SCHIFFMAN Senior Associate
matt@pacommercial.com (P) 248.281.9907 (C) 248.943.6449

 **P.A. COMMERCIAL**
Corporate & Investment Real Estate

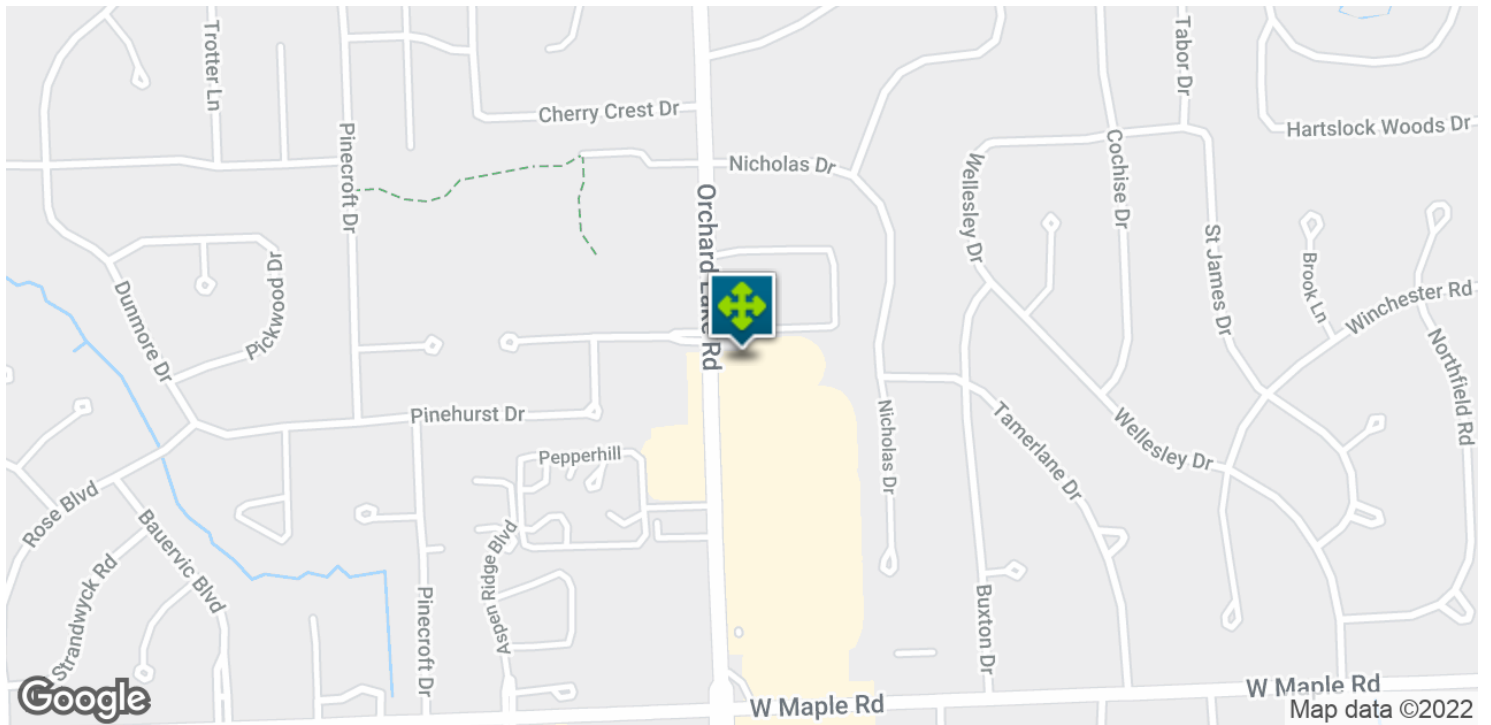
26555 Evergreen Road, Suite 1500 • Southfield, MI 48076

We obtained the information above from sources we believe to be reliable. However, we have not verified its accuracy and make no guarantee, warranty or representation about it. It is submitted subject to the possibility of errors, omissions, change of price, rental or other conditions, prior sale, lease or financing, or withdrawal without notice. We include projections, opinions, assumptions or estimates for example only, and they may not represent current or future performance of the property. You and your tax and legal advisors should conduct your own investigation of the property and transaction

PINE ORCHARD PROFESSIONAL

6177 ORCHARD LAKE RD, WEST BLOOMFIELD, MI

// LOCATION MAP



MIKE GUNN Associate
mike@pacommercial.com (P) 248.331.0202 (C) 248.924.7499

MATTHEW J. SCHIFFMAN Senior Associate
matt@pacommercial.com (P) 248.281.9907 (C) 248.943.6449



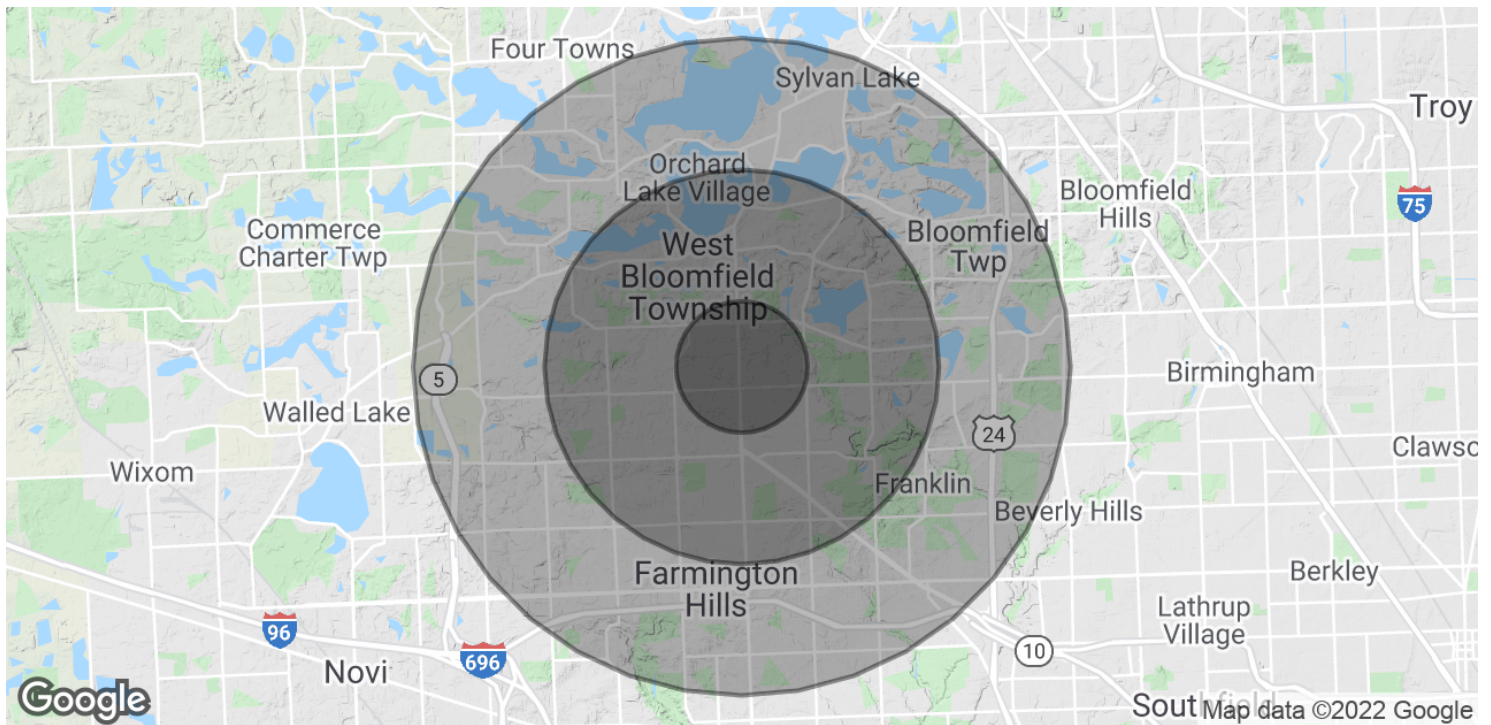
P.A. COMMERCIAL
Corporate & Investment Real Estate

26555 Evergreen Road, Suite 1500 • Southfield, MI 48076

PINE ORCHARD PROFESSIONAL

6177 ORCHARD LAKE RD, WEST BLOOMFIELD, MI

// DEMOGRAPHICS MAP & REPORT



POPULATION

	1 MILE	3 MILES	5 MILES
Total Population	8,242	59,928	151,488
Average Age	43.3	44.2	43.8
Average Age (Male)	42.5	43.3	42.9
Average Age (Female)	44.4	45.0	44.4

HOUSEHOLDS & INCOME

	1 MILE	3 MILES	5 MILES
Total Households	2,987	22,482	58,293
# of Persons per HH	2.8	2.7	2.6
Average HH Income	\$127,001	\$123,862	\$125,637
Average House Value	\$328,314	\$332,719	\$325,131

* Demographic data derived from 2010 US Census

MIKE GUNN Associate
mike@pacommercial.com (P) 248.331.0202 (C) 248.924.7499

MATTHEW J. SCHIFFMAN Senior Associate
matt@pacommercial.com (P) 248.281.9907 (C) 248.943.6449



26555 Evergreen Road, Suite 1500 • Southfield, MI 48076